

# BUILDING AND REAL ESTATE PAGE

The advertisers whose advertisements appear on this page are prepared to give service and help with building plans.

## COEN LUMBER COMPANY

Phone 121

WE carry the largest and most complete stocks of building materials in Douglas County.

WE furnish everything to build anything.

OUR equipment is modern and complete.

OUR prices are right.

NOW IS THE TIME TO BUILD

Plaster board	25.00 M
Cement	.80 sack
Plaster	16.00 ton
Lime	3.00 bbl.
Brick	20.00 M
Steeltex	.26 yd.

Roll Roofing—	
1 ply	1.15
3 ply	1.95

FLY TIME IS SCREEN TIME

## Comfort the Real Problem

Now is the time of the year to check over that furnace—is it heating every room of your home properly?

Remember, the heater is only a part of the comfort system. Any good heater, properly installed, will give you all the heat you want. Temperature, really, is not the major problem in seeking home comfort. It is a combination of temperature, humidity and ventilation. From this point of view, and in the light of the University of Illinois research, it is safe to say that the only real comfort system known today is the warm air system installed according to the standard code.

Have us to check over your furnace, and if it does not come up to the standard code, we can make the necessary changes at a small expense, so that it will give the amount of comfort that you have a right to expect.

**John R. Kelly Sheet Metal Works**  
444 N. Jackson Roseburg, Oregon  
PHONE 466



## Homes

Lumber to Build them.  
Fuel to Heat them.  
Paint to Paint them.

21 Years in Roseburg

Brick, Tile, Cement, Lath, Windows,  
Doors, Wall Board,  
Veneer, Oak Flooring, Drain  
Boards,  
Cedar Boat Lumber  
Roofing

**Page Lumber and Fuel Company**  
709 North Jackson Street, Roseburg Phone 242

## JOE DENN LETS CONTRACT FOR NEW POWDER MAGAZINE

Joe A. Denn has just returned to his home in Roseburg after spending two weeks in central and eastern Oregon. Mr. Denn is president of the Oregon Powder company and is also associated with the J. A. Denn Powder company and the Denn-Gerretsen company of this city. While in Burns Mr. Denn authorized the construction of a new powder magazine for storage of a powder supply for the central Oregon territory. E. E. Harness of Roseburg was awarded the contract for the building of the new powder magazine.

### OREGON WEEKLY INDUSTRIAL REVIEW

Burns—\$500,000 major building program now underway in this place.

Aerial Mapping Engineers, Inc., organized recently, will maintain offices in Portland.

Bend—State highway commission awarded contract for treatment of Roosevelt highway over central Oregon canal near here.

State highway commission will construct maintenance equipment storage building at Paisley.

Plans approved for construction of bridge at Astoria.

Surfacing of east entrance highway to Crater lake park now underway.

Klamath Falls—Site selected for location of \$50,000 municipal airport.

Oregon-Oregon Lumber company of Medford considering extension of its logging railroad from Butte Falls to Klamath Falls.

The Butte-California highway being improved for distance of 5.5 miles between Modoc Point and Williamson River.

Forest Grove—Additional equipment installed at Star Theatre.

Municipal improvements in Klamath Falls this year, not including general maintenance work, will represent approximately \$780,000.

Roseburg—"News-Review" office remodeled.

Plans underway for extension of Chiloquin's city limits to include Chiloquin Heights.

Portland—\$75,000 cold storage building to be erected at East Oak and East Third streets for Frawley-Clark company.

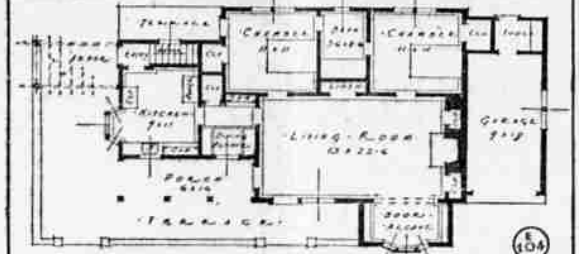
Construction of Dairy-Lorenz

## HOUSE PLAN SMALL, BUT REALLY ENGLISH

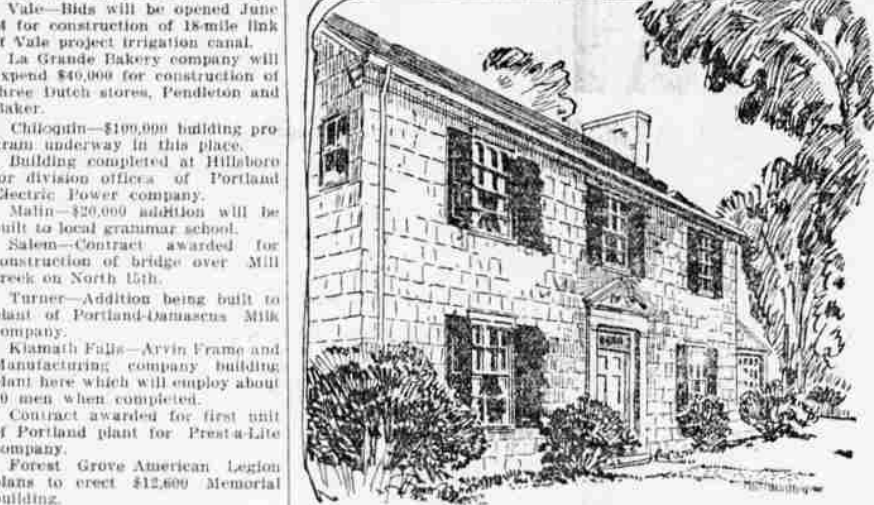


BY CORA W. WILSON  
NEA Service Writer  
Bungalows are popular with many home seekers in this modern day of high cost of servants and the tendency towards compact living quarters. Here is a house that is characteristically English, though it is small and therefore would be perfectly at home in the most exclusive neighborhood.  
This English house built of white stucco on frame construction, half timber and ornamental plaster over the large bay windows, slate roof of variegated color shading from red to gray, and blue shutters. A stone wall runs around the house enclosing a terrace.

Look well to the plans of this cleverly designed comfortable house and note how every inch of space has been utilized.  
On entering the terrace one goes directly into the living room which is 13x15.5. A group of leaded glass casement windows forms a bay, another casement window is of small panes and shuttered. At the further end of this room is a lovely fireplace with book cases on either side, to the right of this room is the garage. In the back of the large living room are two nice sized bedrooms, both square, with closets, a bath and linen closet separating them. These rooms look out on the garden in the rear.  
On the left of the living room is a dining alcove just nice for a light painted set of furniture and



## BEAUTY IN THE HOME



Obtaining Exterior Color With Modern Finishes  
By WILLIAM TREANOR, Architect  
Color, properly understood and courageously used, gives an architect an additional dimension of expression with which to obtain his conceived effect while adding nothing to its cost.  
The houses we live in are in the main simple arrangements of a few geometrical forms, predestined by the little varying requirements of domestic life to a monotonous result to which size, material and color are the only available re-quirements. Size is comparative and materials are limited and it is only in the use of color that the architect and owner find opportunity for imaginative expression unrestricted by terms of bricks, beams and cost. It is an opportunity which they should not neglect.  
The house illustrated was designed for a country place and is surrounded by trees and vegetation. Naturally, the color combination was planned primarily with an eye to the architectural design. The dark buff body of the house is set off by the vivid orange of the shutters. White was used on the roof giving another point of interest. The trim, also in pure

white, helps outline the dormer windows and emphasizes the details of the entrance. The brown roof sets off the whole scheme.  
With the progress made by present-day paint chemists, paint today not only protects the surface it covers, but also puts at your command an almost unlimited choice of colors for creating or re-creating the exterior decorative scheme. With a little pleasant thought, any man or woman can choose and combine exterior colors which increase the attractiveness and the "livable" quality of the home.

## PEACEFUL COUNTY

LONDON—Ruftland county has probably one of the smallest police forces serving a same number of people in the world. The county's population of 18,000 is protected by only a chief constable, an inspector, two sergeants and twelve constables.

## BIG NEWS

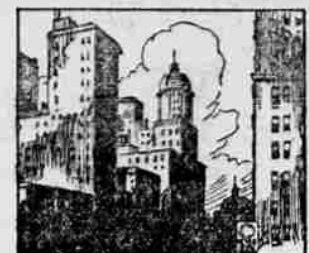
MEXICO CITY—There will be plenty of space in Mexico's latest contemplated paper for war bol-letins. It is to be six feet by nine and will be pacted on walls and bulletin boards throughout the country at locations where large crowds can read it.

## GOOD EVIDENCE

"How about the jury in that prohibition case?"  
"They've been out six hours and they just sent word to the court to send in some more evidence." — Judge.

## News Briefs

Associated Press Local Wire  
LONDON, May 26—Already having made large gifts in gratitude for his narrow escape in a motor accident a few months ago, Bert Beaverbrook, newspaper magnate, is endowing the medical school of St. Mary's hospital. He is to give it \$25,000 in installments over a period of seven years.  
NEW YORK, May 26—Described as having contributed more than



## PRINCE DE SAGAN MAY RECOVER FROM SUICIDE EFFORT

Associated Press Local Wire  
PARIS, May 27—Youthful Prince de Sagan, son of the former Anna Gould, continued today in a serious condition from the bullet wound self-inflicted at Whitinside, ten days ago. His physicians expressed themselves, however, as hopeful of his recovery.  
The prince, whose name is Howard De Talleyrand, shot himself when his mother, the Duchess De Talleyrand, and his father refused him permission to wed a French girl with whom he had fallen in love until he attained his majority. The girl visits him at the private hospital here he is a patient every day.  
Mrs. Guy Minton of Ashland was a visitor here Saturday.

## NEON SIGNS USED BY PORTLAND FIRM

The Claude Neon signs installed by the Electrical Products corporation on a big retail store building in Portland, are the first of their kind to be used by that corporation on their buildings anywhere in the United States, according to officials of the sign manufacturers in Portland. Other buildings belonging to Sears, Roebuck and Co. in other cities are using Claude Neon signs, but nowhere has the type and extent of Neon been used that is on the Portland retail store.  
The tower is approximately 50 feet in height, and is vertically outlined in orange Claude Neon double tubing on four corners, as well as over the coping. A deep green has been used to outline the pilasters.

The main sign over the entrance to the building is 55 feet tall, with the signature placed vertically and outlined in orange lettering. The border to the main display is in double green, one line of which is in warm weather green and the other in cold weather green. This will assure a permanent green color, even though the weather turns very cold in the winter.  
The sign was started and completed in six days, ready for operation, said Mr. Moore in discussing the work. "We received word to start work on Tuesday, May 7, and on Sunday, May 12, the illumination turned on for the first time—six days of rush work, and, we believe, a record.  
"On the tower, which was not completed at the time we started work, our workmen were present day and night, laying conduits as the brick masons laid the brick," he said.  
The Electrical Products corporation, of which J. C. Zaueker is head is a Portland corporation, affiliated with the national organization associated with the Claude Neon sign process. The company was formed in Portland in March, 1927, and now employs approximately 125 men in its plant on Sandy boulevard. Officials state that the monthly payroll of the plant has now reached \$14,000. Over 1200 Claude Neon signs have been installed in Portland since 1927, until now the city is estimated to have more signs per capita than any other city in the world, stated Mr. Moore.  
"In addition to the 1200 signs which we have installed, making Portland the leading city in per capita representation in the world," Mr. Moore said, "the city also has

the distinction of having the largest sign of its kind. The Richfield sign on the hills south of Portland is the largest in the world, and naturally we are pleased with the fact that it is one of our products and a Claude Neon patent."  
Picnic at Idlewild Park.

## Roof Work

of Every Description  
A roof equal to the best anywhere. Let us help you with your roof problems. No obligation for estimates.

- SOME OF OUR RECENT JOBS
- Medical Arts Bldg.
  - New Central Garage
  - Horace Berg Residence
  - Moore's, 221 W. Wash. St.
  - Drain Motor Shop Garage
  - Camas Valley High School
  - Days Creek High School
  - Christian Church
  - Yoncalla School

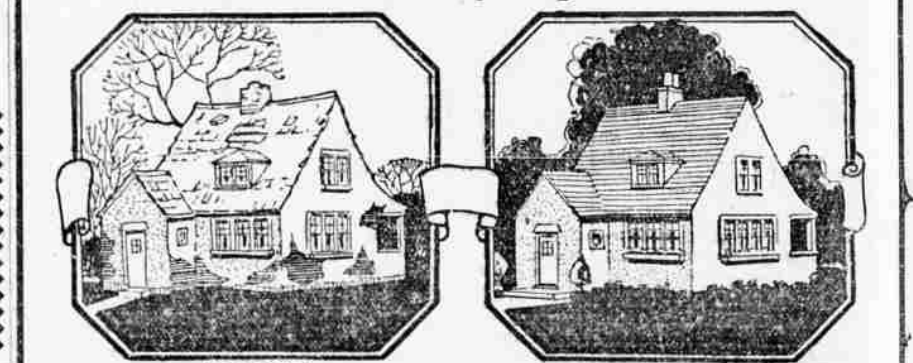
## DENN-GERRETSEN CO., INC.

SAVE TO OWN YOUR OWN HOME

It requires but a small regular payment to become a member of our Savings and Loan Association, and once a certificate holder you will find how easy it is to accumulate a savings fund. It will be greatly to your advantage to confer with our officers and learn the advantages of joining in with us at once.

**The UMPQUA SAVINGS LOAN ASSOCIATION**  
PHONE 87  
DOUGLAS ABSTRACT BLDG., ROSEBURG

## We Can Help You Renew Your Home This Spring



**BEFORE AFTER**  
Cost Very Low Compared With Increase in Value.  
The dollars spent in remodeling and modernizing your home will return to you two fold through increase in the value of your property. If it income property the increased rentals will alone defray the expense.

**Now Is the Time for Screens**  
Need for screens has arrived with the warm weather. A phone call to us and we will measure your doors and windows and furnish an estimate. Screen doors, single window screens, special porching screening work—all right in our line.

- Lumber
  - Lath
  - Shingles
  - Brick
  - Lime
  - Tile
  - Building accessories
  - Remodeling service
  - Prompt delivery
  - Cement
  - Plaster
  - Drain tile
- Millwork a Specialty
- Just Phone **38** For Plans and Estimates Service.

## UMPQUA VALLEY LBR. CO.

Oak and Pine Sts.