

### OVER 40,000 BUSES USED DAILY IN U. S.

WASHINGTON, D. C., May 8.—The motor bus has virtually revolutionized rural education and more than a million and a quarter school children depend upon 49,875 school buses for transportation to school each day, according to preliminary figures from "Bus Facts," annual publication of the national motor bus division of the American Automobile association.

The A. A. A. bus division points out that in total of 15,530 schools now use buses, which cover 119,370 miles of route daily, and comprise 44 per cent of the total number used throughout the country.

"The motor bus has been a dominant factor in bringing about the consolidation of rural schools, which has resulted in a much higher type of educational center," says Bus Facts. "Approximately 35,000 one-room schools have closed their doors since 1921 to be replaced by at least 7,000 consolidated schools, which are equal to the best in the country."

At the same time, says the publication, this school transportation system has been increased until today it is estimated that 359,000,000 rides are provided the students at an annual cost of well over \$27,256,728.

The southeastern area, comprising 12 states, has the largest number of buses—14,199, and at the same time greatest route mileage served, 150,894 and 5,653 respectively. The cost of this service in the southeast was \$7,843,896 for the 1927-28 school year.

However, the northeastern area, serving 11,000 less schools, with a shorter route mileage and a smaller number of buses, spent \$9,001,792 for the service.

The statement continues: "The school bus has tended to break down provincialism and has solved the age-old problem of school facilities in the rural sections."

"The advantage of the consolidated school, served by the motor bus, is seen by the fact that recent tests in specific subjects revealed a superiority over the one-room type of school by margins of from ten to twenty-five per cent."

"Bus transportation is now provided through two ways—contract with operating companies or school ownership. The latter method prevails generally."

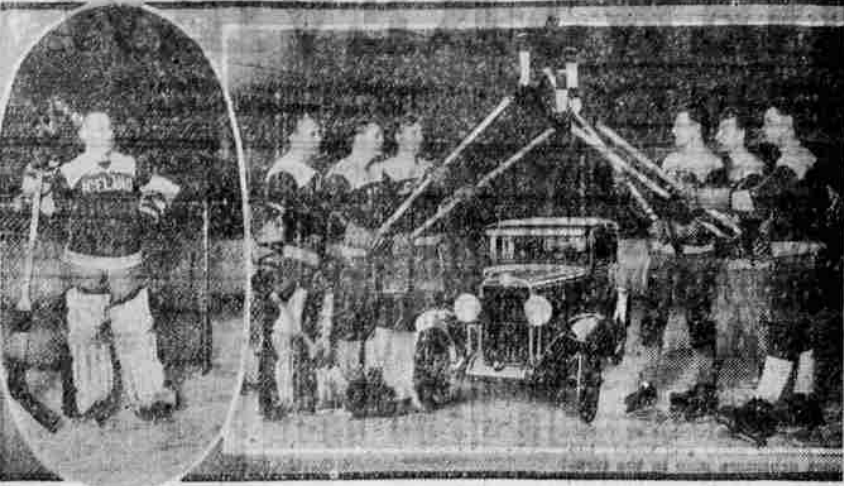
"Since the bus is used only part of the day, the driver problem is a troublesome one, but has been best solved by allowing teachers or older students to earn the money available by acting as drivers."

"In many instances, operating costs are lowered by repairing school-owned buses in 'teaching' departments of the school."

"Generally the school bus is of a special type. Comfort is less regarded than durability and ruggedness, with its capacity determined by the particular needs of each school."

Fresh salmon eggs, Idaho Park.

### Hockey Season Closes



Last week saw the end of the ice hockey season, which has enjoyed a great run on the coast this past winter. Here are some of the players of the San Francisco team holding their clubs over the diminutive Chevrolet Convertible Coupe.

### NEW SPARK PLUGS HELP TO ECONOMY

Champion national change week will be observed by the more than 150 Western Auto Supply company stores during the week of May 5 to 11, advises G. M. Kreil, local manager of the company.

Last year during national change week, more than three million automobile owners in the United States secured additional power, speed and better all around engine performance by installing a new set of Champion plugs in their cars, stated the Western Auto manager. "This change actually costs nothing when it is considered that the price of new spark plugs is easily made up in the saving of oil and gasoline."

"Weak spark induces excessive use of the choke, which is one of the principle causes of crank case dilution. The best way to eliminate this dilution of oil and waste of gasoline is to install a new set of spark plugs. The hot, full spark of new plugs consumes the gas and stops crank case dilution to a marked degree."

"Many motor car manufacturers recommend that new spark plugs be installed at regular intervals just as they recommend the regular change of oil. They know that no matter how well a spark plug is made, the tremendous stress to which it is constantly subjected in modern motors, causes it to lose its efficiency."

"Thorough investigation over a period of several months in which practically every make of plug was tested, has demonstrated that all spark plug insulators and electrode wires deteriorate slowly but surely. Present day gasoline, the result revealed, contains a much higher percentage of carbon than

the 'high test' gasoline used several years ago, and produces considerably higher temperature, so high in fact, that in combustion considerably higher temperature, so passes through the carburetor, the cylinder head, piston tops and all parts within the firing chamber, including the insulators of the spark plugs, are slowly covered with a deposit of unburned carbon."

"This deposit is a conductor of electricity and as it increases in depth, the full spark which is so vitally essential to complete combustion, is gradually diverted from the spark plug gap and at the end of a year's time, loss of from five to twenty-eight per cent in engine efficiency is readily measurable."

"The cost of a new set of spark plugs once a year, or each 10,000 miles, is small in comparison with the satisfaction derived from the almost unbelievable improvement in its operation, increase in power and mileage and satisfactory performance."

### NEW AUTO LAWS BECOME EFFECTIVE TUESDAY, JUNE 4TH

SALEM, Oregon, May 8.—A number of important laws affecting the operation of motor vehicles were enacted at the recent session of the legislature, and many of them will be effective on June 4th. Of particular interest among them has been the one providing a new schedule of load limits for trucks, and inasmuch as there appeared to be some confusion in the act as finally passed, the secretary of state had the entire problem referred to the state's attorney-general for interpretation. The opinion of the attorney-general will be used as a basis from which the weight law will be administered, says the secretary of state, with the following as the high lights of the interpretation:

"A four-wheeled truck may be

operated with a combined weight of not more than 22,000 pounds, but if operated in combination with other vehicles the combined weight of all shall not exceed 34,000 pounds. A six-wheeled truck having two axles spaced less than eight feet apart may have a combined weight not in excess of 27,000 pounds, and may not be operated in conjunction with any other vehicle or without pneumatic tires. A six-wheeled truck having axles spaced not less than eight feet apart may be operated with a total combined weight not in excess of 34,000 pounds, or may be operated in conjunction with other attached vehicles, the total combined weight of which truck and attached vehicles shall not be more than 34,000 pounds."

Hot-Kaps for protecting tomato and other plants from the sun and frost are sold at Wharton Bros.

### MONO-PIECE BODY FEATURE OF DODGE

The enthusiastic public reception of the Mono-piece body construction, an exclusive feature of the eight models in the new Dodge Brothers six line, has been given added significance by engineering predictions that "the all metal seamless body is the automobile body of the future."

This prediction was made by George J. Mercer, consulting body engineer, and former chairman of the committee on standards, body division of the Society of Automotive Engineers, before a recent meeting of the Cleveland section of the S. A. E.

The all-metal seamless body is identical with the Mono-piece construction offered on all new Dodge Brothers six cars. In this body, the four major metal sections are welded into one piece. Exhaustive engineering tests have proven the welded joints stronger than any other part of the body. Outstanding advantages claimed in this construction includes stability, sturdiness, silence, safety, roominess and improved appearance.

All outside seams and joints are eliminated, preventing annoying squeaks and rattles at tens of thousands of miles. Height is saved with no sacrifice of head or leg room by special horizontal-vertical bolting of the body directly to the chassis frame that eliminates the conventional sill separating the body and chassis in other forms of construction. This lowering of the passenger load makes for lower center of gravity, safety and more perfect balance under every driving condition.

Maximum vision is afforded in this unique rigid construction by the slender steel corner posts. Interior space is increased because the heavier posts necessary in many bodies are eliminated, and in place of these, the metal of the cowl and side pieces is drawn and folded around the door and window openings to give maximum strength.

The mono-piece construction adapts itself to the trend in modern body styles by its longer and lower appearance. Its exterior fin-

ish without seams or joints affords a smooth unbroken surface for the distinctive lacquers and color combination features on each of the eight models.

Garden seeds in bulk or packages at Wharton Bros.

MISSES DRESSES, \$1.00  
We have added 12 to 18 sizes to our wonder line of \$1.00 dresses. These children's sizes come in the colorful prints, each dress beautifully styled. We also have a kid-size line in 3 to 6 sizes at \$1.00. You can't afford to make them for \$1.00. See these at Carr's.

DR. DEAN B. BUBAR  
OPTOMETRIST  
Specialist in the fitting of Glasses  
116 Jackson St.

Walk south 1/2 block on Jackson street and save \$ — Opposite Antlers Theatre.

## DISPOSAL SALE

of  
**NEW COATS**

No last season's garments, picked over old stock, but the very last minute in style, color and material.

**My Complete Stock Is Only 15 Days Old**  
and at history making prices in many cases. I can save you from ten to twenty dollars on a single garment.

**FINE COATS**  
**\$4.75 to \$27.85**  
Sizes 14 to 56

I personally believe that the selection and values afforded at this sale are by far the best ever offered the people of Roseburg.

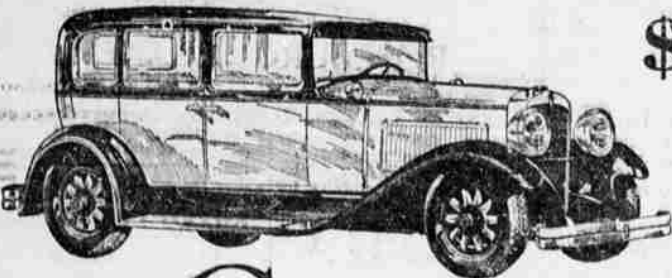
### ROSEBURG COAT SHOP

Bell Building Opposite Antlers Theatre

You can bank on the quality of a cigarette that continues to be the biggest success in smoking history

## NASH "400"

Leads the World in Motor Car Value



**\$1145**

Delivered, Fully Equipped, Nothing More to Buy!

Compare delivered, fully-equipped prices

See why Nash is lower!

ON the basis of quality, the Nash "400" should cost more than other cars in its competitive field. It actually costs less!

Nash engineers—one of the industry's outstanding engineering organizations—have created a finer motor car. They have developed the high-compression, 7-bearing motor to its highest point of perfection and power. The exclusive Nash outboard mounting of hydraulic shock absorbers doubles their effectiveness and creates supreme riding ease. And here is the "world's easiest driving control," in this new and finer motor car.

These are but a few of many "400" features of superiority.

Why, then, is the Nash "400" lower priced?

Here is the explanation. Every Nash "400" is now factory-equipped with the accessories, purchased at factory savings and included in the factory price of the car. Bumpers, shock absorbers, spare tire lock and tire cover come with the car and are not added later as "extras," at retail prices.

You will find some dealers (not Nash dealers) charging as much as \$50 or \$60 extra for bumpers alone.

Compare the delivered, fully equipped price of any Nash "400" with the delivered, fully equipped prices of competitive cars. You'll see the saving!

L. R. CHAMBERS MOTOR COMPANY  
NASH SALES AND SERVICE  
Main and Douglas Sts. Phone 649 Roseburg

# CAMEL CIGARETTES

WHY CAMELS ARE THE BETTER CIGARETTE

Camels contain the choicest tobaccos grown... expertly blended for matchless taste and fragrance.

They have a welcome mellowness and mildness that you will find in no other cigarette.

Smoke them as often as you like, Camels never tire your taste.

The quality of Camels is never permitted to vary.

Only a superior cigarette could have won and held world leadership for all these years as Camel has done.

