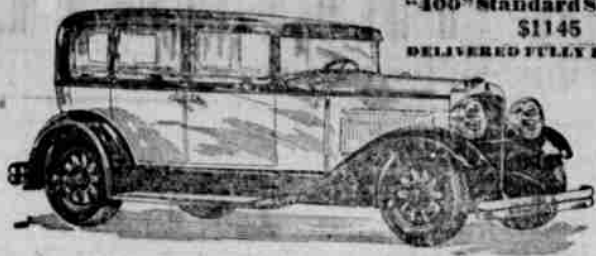


THE WORLD HAS A NEW AND FINER MOTOR CAR



"400" Standard Six Sedan \$1145 DELIVERED FULLY EQUIPPED

Nothing more to buy

The Quoted Price Includes Freight and Complete Equipment

When the Nash salesman quotes you the price on a Nash "400," you will find that it includes not only the car, but the freight, bumpers, hydraulic shock absorbers, everything!

There's nothing more to buy. Nash puts on the extras at the factory, instead of you or the dealer putting them on, at retail prices!

The "400" Standard Six Sedan Body 4-door Sedan, illustrated above, will give you an excellent idea of Nash 9 Sedans from \$1071 to \$2370, delivered.—8 Coupes, Cabriolets, Victories from \$1066 to \$2003, delivered

"400" value. Come in and see it. Take it out and drive it.

The money never bought so fine a motor car before—big—handsome—powered by a new, high-compression, 7-bearing motor—longer wheelbase—new double drop frame—all exposed metalware chrome plated—and a host of other vital improvements. Read them below.

And then remember that the price includes everything—nothing more to buy!

NASH "400"

Leads the World in Motor Car Value

IMPORTANT "400" FEATURES—NO OTHER CAR HAS THEM ALL

- High-compression Motor, High Turbulence, Lovejoy shock absorbers, Salon Bodies, Aluminum alloy pistons, 7-bearing crankshaft, Exterior metalware chrome plated over nickel, Short turning radius, Longer wheelbase, One-piece Salon fenders, Clear vision front pillar posts, Nash Special Design front and rear bumpers.

L. R. CHAMBERS MOTOR COMPANY

NASH SALES AND SERVICE

Main and Douglas Sts. Roseburg Phone 649

REPUBLICAN CONGRESSMAN LOSES TEXAS CONTEST

SAN ANTONIO, Nov. 20.—On the face of official returns canvassed

by the Texas county commission, incumbent, Harry M. Wurzbach by a majority of 209 votes. J. McCloskey today was declared the victor over the republican 16,759.

ANNIVERSARY OF FIRST OIL PIPE LINE OBSERVED

BRADFORD, Pa., Nov. 18.—Arrangements were completed here today to celebrate on next Thursday the fiftieth anniversary of the first pipe line ever built to the seaboard and the first six-inch line ever attempted anywhere. The Tide Water Pipe Company, Ltd., the original company and now a subsidiary of the Tide Water Associated Oil Company, will host at a luncheon at the Holley hotel at which its president, Noel Robinson, will preside.

RADIO SPONSORS THRIFT CONTEST

A radio thrift essay contest is being conducted throughout the Pacific Northwest by the American Trust Company of Portland. Prizes consist of deposits on one of the company's thrift accounts and range from one hundred dollars in the senior division, which includes all persons over twelve years of age.

The essays are limited to one thousand words in the senior division and to five hundred words in the junior division. It is required that all essays shall be upon some phase of thrift and that they may be written in such a way as will be likely to increase active interest in thrift.

\$10,000 OFFERED FOR BEST SLOGAN

In an effort to determine which one of the six distinctive Yale-Bond features is of greatest popular appeal, the Bond Electric company is conducting a national slogan contest in which 1183 separate awards are offered, according to G. M. Kreil, local manager of the Western Auto Supply company.

"This slogan contest is being supported by all Western Auto Supply company stores," advises Kreil, "and it offers to every man, woman and child, an opportunity to share in the prizes which have a total value of \$10,000. There are no essays to write, no puzzles to solve, no involved conditions; all that is necessary is to write a slogan, or number of slogans that strikingly summarize the advantages of the Yale-Bond flashlight or mono-cell feature."

SUNLIGHT SAID TO INJURE GASOLINE

Among recent discoveries of science, few are more amazing than the fact that plain, everyday sunlight has a definitely harmful effect upon ordinary gasoline, according to L. E. Cleaves, district manager for the General Petroleum Corporation.

For Sale Good Used Cars

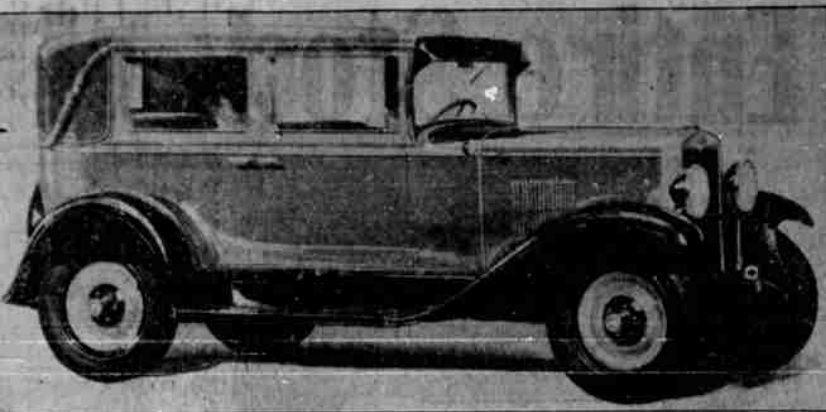
- 1925 Ford Coupe \$175, 1926 Essex Coach 375, 1925 Essex Coach 350, 1924 Studebaker Touring 200, 1925 Hudson Coach 550, 1925 Hudson Coach 750, 1922 Ford Touring 15, Ford Delivery 100

SEE THESE CARS BEFORE YOU BUY

Roy Catching Motor Co.

Rear of Umpqua Hotel

The New Chevrolet Six Cylinder Convertible Landau Sedan



The new model Chevrolet 6 cylinder convertible landau sedan, one of the new line of 6 cylinder cars, announced today by the Chevrolet Motor Company. The new motor develops 32 per cent more power than its famous predecessor and yet will operate with an economy averaging better than 20 miles to a gallon of gasoline.

A SIX IN THE PRICE RANGE OF THE FOUR

DETROIT, Nov. 21.—Passing on to the motor industry the benefits of economies arising out of tremendous volume production, the Chevrolet Motor Company today introduces "the outstanding Chevrolet of Chevrolet history—a six in the price range of the four."

In making this important announcement, W. S. Knudsen, president and general manager, points out that the sensational public reception accorded the car in recent years has enabled Chevrolet at this time to offer the added power, speed and smoothness of six cylinder performance at practically the same price that contributed so much to the world-wide popularity of the four.

NO LACK OF OIL IN THE UNITED STATES

Seven models of passenger cars and three commercial types comprise the line. Despite the score of advanced features, prices remain practically the same, chiefly as the result of the influence of tremendous volume production. The passenger car range is from \$525 to \$725 f. o. b. Flint, Mich. The prices, according to models are as follows: Roadster \$525; phaeton \$525; coach \$595; coupe \$595; sedan \$675; sport cabriolet \$695; convertible landau \$725.

The commercial prices are: Light delivery chassis \$400; one and one-half ton utility truck chassis \$545; one and one-half ton utility truck chassis with cab \$650 and the sedan delivery \$695. All prices are f. o. b. Flint, Mich.

A number of estimates have been made as to the oil reserves of the United States, but in most cases it has been found that these estimates have been too low, due to the fact that not enough allowance was made for the discovery of new fields, according to the Oregon State Motor association. The latest estimate on the oil reserves of the United States was made by the committee of eleven of the American Petroleum Institute in March, 1925. According to this estimate, the amount of petroleum recoverable by present methods of flowing and pumping from existing wells and proven acreage was 5,300,000,000 barrels.

DRIVE HUDSON OR ESSEX YOURSELF, YOUR DEALER SAYS

Drive the car yourself! This is the invitation featured for the autumn season by Roy Catching, Hudson-Essex distributor and by dealers throughout the country.

"Only by personally sitting behind the wheel and driving an automobile can the motorist acquaint himself with the special performance features that characterize that particular automobile," said Mr. Catching.

"Many people buy automobiles," he continued, "because they have ridden special demonstration rides, with others at the wheel, in prepared demonstrators that deliver exceptional power and speed, only to find themselves disappointed in the performance of the automobile that is delivered to them."

"We are convinced no cars in their price class offer such exceptional performance to owners and drivers as the Hudson and Essex models. Owners of these cars talk enthusiastically of their economy, their power and their speed. The fact that Hudson-Essex has obtained all six-cylinder cars in 1928 is proof that the greater part of the six-cylinder buying public is conversant with Hudson-Essex style and performance. Hundreds of scores more to become acquainted with the becoming ability of Hudson and Essex by driving the cars themselves. Cars are ready for this test and any motorist or prospective automobile purchaser is invited to visit our showrooms and drive one of these automobiles, without placing himself or herself under any obligation whatever."

"Many motorists who have enjoyed their first ride in the Hudson super-six have commented with enthusiasm on its performance. Motorists will find it smooth, fast and reliable, a wonderful road car. Furthermore, the present Hudson model is delivering from 15 to 18 miles to the gallon of gasoline, a fuel economy unequalled in cars of its weight and power."

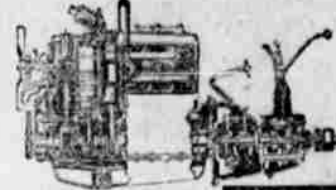
The MAGIC OF POPULARITY

WILLYS-KNIGHT NOW AT LOWEST PRICES THROUGH QUANTITY PRODUCTION AND RECORD SALES

FOR a decade and a half, Willys-Knight's every effort was bent toward achieving a low-priced six-cylinder car, powered by the patented double sleeve-valve engine, and maintaining all of Willys-Knight's quality.

And this year, through constant improvements in manufacturing and engineering methods, through large scale production and increasing sales, Willys-Knight has broken down the price barrier—and hundreds of thousands of enthusiastic motorists now enjoy—at record low prices—the smoothness, silent power, economy and increasing efficiency which are possible with no other type of engine.

WILLYS-OVERLAND, INC., TOLEDO, OHIO



Ten-horsepower combine with the inherent cylinder head in form a perfectly sealed combustion chamber—ensuring high cylinder compression with any gas.



STANDARD SIX COACH \$995

WILLYS-KNIGHT Six

F. W. CHASE Phone 399

Salesroom 317 North Jackson St.

Roseburg, Oregon

HUDSON-ESSEX

The Only Super-Sixes

ROY CATCHING MOTOR CO.

Completely equipped machine shop for handling all classes of auto repair work. 125 N. ROSE ST. PHONE 435 ROSEBURG, ORE.