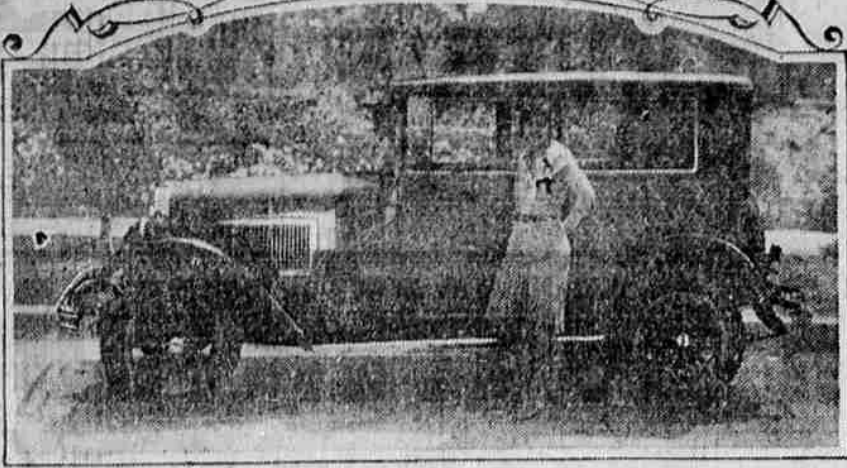


### FILM STAR AND HER WHIPPET SIX



Dorothy Gulliver, featured by Universal in the "Collegian" series, and who recently completed the feminine lead in the Jewel production "Honeymoon Flats," takes enough time from her strenuous work in the movie studios to pose with her favorite car, a Whippet Six Coach.

### WILLYS-OVERLAND SHATTERS RECORD

Surpassing all previous records, the Willys-Overland company on May 31 produced 2,244 Willys-Knight and Whippet cars which is an increase of 214 cars over the previous highest daily output.



**RED CROWN GASOLINE** needs no "dope" STANDARD OIL COMPANY OF CALIFORNIA

Established on May 15th, when 2,930 cars were produced, officials announced here today. May shipments totalling 14,559 cars broke any previous record and compared with shipments of 27,564 cars during May of last year. May production totalled 45,986 cars as compared with production of 35,920 cars in April, 33,898 cars in March, 25,522 in February and 13,674 in January. This is the first time in the history of the industry that any company outside of Ford and Chevrolet has produced more than 40,000 cars in one month. Thus Willys-Overland's total production for the first five months of the current year equaled 156,800 cars which exceeds by more than 30,000 units production of 126,301 cars for the entire first six months of last year and already definitely establishes the first half of 1928 as the greatest in the company's history.

Indications that the company was continuing to pass its previous production and shipment records were contained in the announcement that on May 25th, shipments of cars totalled 2,951, the largest one-day shipment record in 20 years. The previous high record had been on April 25 when 2,617 cars were shipped. Included in this record is the largest single day's driveway record made on May 25th when a total of 815 cars left the plant under their own power in the hands of drivers representing dealers within a radius of

250 miles from Toledo. The company entered June with production and shipments continuing at the record pace in efforts to catch up with the unfilled orders for more than 20,000 cars on the books of the company. In addition to a working personnel of more than 22,000 in the Toledo plants, the Pontiac, Mich., Elmira, N. Y., and Toronto plants of the company are working at 100 per cent capacity, it was stated.

### PETITIONS OUT TO PUT POWER BILL ON BALLOT

SALEM, June 13.—At a meeting of the Oregon Game Protective association held in Portland yesterday, four initiative petitions purporting to preserve for food and game fish propagation and recreation the waters of the Umpqua, Rogue, McKenzie and Deschutes rivers, were endorsed and will be sent to the attorney general for title.

The petitions which seek to check further encroachment of power plants for commercial purposes include the tributaries of the above named streams with the exception of the White river branch of the Deschutes.

In order to put the petitions on the November ballot, 12,228 signatures must be obtained. Ed Piasecki, of Dallas, president of the association, placed R. J. Kirkwood of Portland in charge of the circulation of the petitions.

### RACE DRIVERS USE GUM-DIPPED TIRES

Racing history repeats itself. Firestone Gum-Dipped tires, winners of every national championship for years, are again shattering all world records on the great speedways of the country.

The story has been the same at every important race in years. Firestone equipped cars win all national championships.

The average man who owns a car necessarily should be assured of the same tire safety and dependability as the racing drivers who entrust their personal safety to Firestone Gum-Dipped tires. Veterans of the speedway understand the extra strength and speed built into a tire by reason of the exclusive Firestone Gum-Dipping process. They know that this method impregnates and insulates every cord of the carcass with live rubber, reducing the possibility of lateral friction, and unifying the whole structure of the tire.

Moreover, the Firestone scientifically designed balloon tread provides driving dependability, and long mileage at low cost.

### FINE SERVICE IN WESTERN STATES

The fact that the Western Auto Supply Company through its more than one hundred and fifty western stores can offer a distinctive service to automobile owners is one of the chief reasons for its success, according to the belief of G. M. Krell, local manager of that company.

"We believe that our company offers a service that no other company in the west can duplicate, a service that should mean a great deal to every car owner," says Krell. "When the motorist equips his car with Western Auto tires he can start out on his vacation trip free from all tire worries and ready to fully enjoy his travels with the guarantee and service of the world's largest auto accessory concern to back his confidence."

"Recently we reduced our ready low tire prices just in time for summer vacation requirements and since that announcement has appeared in the newspapers, thousands of automobile owners have taken advantage of the additional savings offered. In selecting these tires, they are secure in the knowledge that however far from home their summer fishing and camping trips may take them, they will always be near another of our more than one hundred and fifty conveniently located stores, where, if their tires should need servicing, they will be promptly cared for in the full spirit of our 'Customer is always Right' policy and our guarantee that assures complete and lasting satisfaction."

### WOMAN PASTOR CLAIMS SHE'S POISON VICTIM

(Associated Press Leased Wire) PORTLAND, Ore., June 12.—Believing that an attempt had been made to poison her, the Rev. Mrs. Ida M. Schari, pastor of the Independent Bible Spiritualistic church who is ill at her home, today requested the police to test the contents of a cake said to have been presented to her yesterday by a member of her congregation. The police turned remnants of the over to a chemist for analysis.

Eat barbecue sandwiches and live forever. Brand's Road Stand.



### WHIPPET FOUR SEDAN

**\$610**

Four-cylinder Touring \$455; Roadster (2 seats) \$485; Roadster (with rumble seat) \$525; Coach \$535; Coupe \$535; Cabriolet Coupe (with collapsible top) \$595.



**IMPORTANT NOTICE!**  
U. S. AUTO TAX REPEALED  
BUY NOW at Lower Prices!

The Whippet 4-cylinder Sedan is the world's lowest priced 4-door enclosed car. No other manufacturer has been able to produce a 4-door Sedan at such low cost. The last word in high quality and modern design and the newest thing in style, this smart, colorful, roomy Sedan is tremendously popular everywhere. Its liveliness, its speed, its smoothness and its remarkable economy are a

revelation. Of course it is equipped with approved 4-wheel brakes for utmost safety. Record-breaking sales attest the public's marked preference for Whippet values. The first five months of 1928 were by far the greatest in Willys-Overland history. May sales were 14% above April, the highest previous month. Demand continues at the same high level.

### WORLD'S LOWEST PRICED SIX SEDAN

Whippet Six Touring \$615; Roadster \$685; Coupe \$695; Coach \$695. All prices f. o. b. Toledo, Ohio, and specifications subject to change without notice. Willys-Overland, Inc., Toledo, O.



### F. W. CHASE

Salesroom 317 North Jackson St.

Phone 399

Roseburg, Oregon

### World's Greatest Value altogether or part by part

To know the overpowering conviction of greatest value held by Essex owners is merely to see Essex beauty, to examine Essex quality, to sit inside and feel Essex comfort—to ride and know Essex performance.

Here is the simple and sovereign answer to the question of automobile satisfaction.

The ideal transportation achieved in the Greatest Essex Super-Six was long foreshadowed in the series of individual superiorities by which Essex towered above the field. Its vivid brilliance of performance reveals in a single ride a smoothness and quiet, a road-skimming ease and soaring exhilaration that is actually like flying.

Greater in power, more versatile in all performance, larger, roomier and more beautifully appointed, the New Essex Super-Six gloriously earns its richer reward in the greatest popularity of Essex history.



### ROY CATCHING MOTOR CO.

Completely equipped machine shop for handling all classes of auto repair work. 125 N. ROSE ST. PHONE 438 ROSEBURG, ORE.

War Tax Off—Effective now on Hudson-Essex Cars.

### WAR TAX OFF

Effective Now on Hudson-Essex Cars \$735 UP

Coach - - - - \$735  
Coupe - - - - 745  
(Rumble Seat \$30 extra)  
Sedan - - - - 795  
Roadster - - - 850  
All prices f. o. b. Detroit.

Finances can pay for cars out of income at low cost available charge for interest, handling and insurance



Let it rain cats and dogs!

RUSCO holds just as well in wet weather as in dry. Have your brakes relined with RUSCO today at an officially authorized Rusco Brake Service Station.

### RUSCO BRAKE LINING

Rusco Service at Ned Dixon's Super Service Station ROSEBURG, OREGON

### RADIO PROGRAMS

#### Portland Stations

KGW, 491.5—6:7 p. m., dinner music; 7:7-30, musical travelogue; 7:30-8, concert trio; 8:8-30, Jack and Ethyl, the motormates; 8:30-9, National Nite club, Pacific coast network; 9:10, concert, Pacific coast network; 10:10-15, dance music.  
KOIN, 319—6:7, dinner concert; 7:7-15, amusement guide and utility; 7:15-8, orchestra concert; 8:9-10, studio music; 9:10-10:10, stage and orchestra presentation; 10:10-10:30, piano recital; 10:30-12, dance music.  
KEX, 277.6—6:20-7, children's program; 7:8, dance music; 8:10, studio program; 10:12, dance music.

#### Other Coast Stations

KOAC, Corvallis, Ore., 270.1—12:15-1 u. m., luncheon concert and news; 6:30-7, campus reporter and music; 7:7-30, farm utility program.  
KFOA, Seattle, Wash., 447.5—6:30 p. m., special entertainment; 7:7-30, movie club; 7:45-8, book talk; 8:8-30, studio concert; 8:30-9:30, courtesy concert.  
KOMO, Seattle, Wash., 309.1—6:7 p. m., concert orchestra; 7:8, concert orchestra and mixed quartet; 8:10, network program; 10:11, news and dance harmony; 11:12-30, dance orchestra and popular songs.  
KGO, Oakland, Calif., 384.4—6:20-7 p. m., Parisian quintet; 7:7-30, farm program; 7:30-8, Parisian quintet; 8:11, network concert.  
KFI, Los Angeles, Calif., 468.5—6:7 p. m., male quartet and orchestra; 7:7-30, studio program; 7:30-8, blues and ballads; 8:30-9,

network concert; 8:10-3, studio program; 9:11, network concert.  
KFWB, Hollywood, Calif., 361.2—6:40-10 p. m., organ recital; 6:30-7, popular entertainment; 7:7-30, orchestra; 7:30-8, songs and news; 8:9, studio concert; 9:10, orchestra and soloist; 10:11, popular entertainment.  
KPO, San Francisco, Calif., 422.3—6:7 p. m., dinner concert; 7:7-30, instrumental trio; 7:30-8, novelty duo; 8:8-30, network hour; 8:30-9, violin recital; 9:10, network concert; 10:11, dance orchestra.  
KHJ, Los Angeles, Calif., 399.8—6:7 p. m., music and utility; 7:7-30, Spanton program; 7:30-8, symphonic band; 8:9, courtesy concert; 9:10, concert orchestra; 10:12, dance orchestra.  
KYA, San Francisco, Calif., 352.7—8:9 p. m., diversified music; 9:10, studio program; 10:12, dance frolic.  
KFRS, San Francisco, Calif., 464.3—7:7-30 p. m., instrumental music; 7:30-8, orchestra music; 8:8-9, Maxwell concert; 9:10, concert orchestra; 10:11, dance orchestra; 11:12, Balconades orchestra.  
KHQ, Spokane, Wash., 370.2—6:7 p. m., concert orchestra; 7:8, orchestra; 8:8-30, courtesy concert; 8:30-10, network program.  
KMO, Tacoma, Wash., 254.1—6:30 p. m., Hawaiian program; 6:30-7:30, recorded music; 7:30-8, request program; 8:9, studio entertainment; 9:10, recorded concert.

should be in keeping, or as it were, commensurate with my station in life, which has hitherto been one of no inconsiderable importance."  
"Well, you seem to have a liking for long sentences. Ten years," Dublin Herald.

### BRAKE INSPECTION A REAL SAFETY MEASURE

Motorists who keep their brakes in the best condition are the strongest advocates of brake inspection. They do not experience brake failure and yet, many times they worry about it more than the irresponsible driver.

This is the discovery made by a group of safety advocates, based upon an investigation to determine what class of car owner and driver is giving the most support to safety movement.

In explanation to this, the investigators point out that the careful motorist knows better than anyone else, the menace of the "other fellow" who speeds over the highway with a defective brake

ing system. Even if his own brakes are safe, the careful motorist realizes that this does not render him secure against the "irresponsible element."

Commenting upon these findings an official of the Russell Manufacturing company declares that it is important to keep conscientious drivers sold on the necessity of periodical inspection of car equipment, and points out that it is also important that the careless driver be educated to have his brakes inspected periodically.

"Most people are careful," he says, "and we can keep our highways and streets safer by keeping the majority behind this movement, and by continually endeavoring to enlist the aid of all motorists in keeping brakes in proper condition."

In many cities compulsory brake inspection ordinances have been passed, making periodical brake inspection necessary and the enforcement of this ordinance has invariably resulted in fewer accidents.

### QUICK AS A FLASH

Congested traffic and faster driving demand brakes that respond instantly—a life may be the toll if your brakes fail.

### Brake Adjustment by Guess

will not do. THE JUMBO brake tester reveals on gauges which the adjuster can read the true braking power of each and every wheel. We have installed the JUMBO, and you should have us test your car brakes—there is no chance for error. Come in today.

### PERCY CROFT

at Highway Service Station. Main and Douglas Sts.