

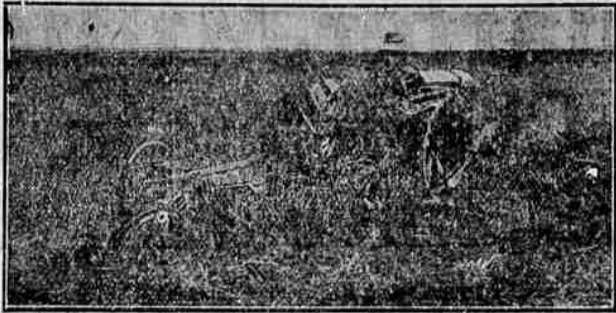


Attention Farmers!

Are You Still Following the Century-Old Methods in Your Work?

Or, are you getting the most per acre out of your land. If your staple crop fell below the expected production level last year, perhaps it was because your equipment was insufficient.

Modernize Your Equipment



If it is a Tractor, Harrow, Tractor Plow, Orchard Plow, Disc, Weeder, Seed Drill, or any other Farm Machine, we can supply your need. Come in and talk over the Farm Problems with us. We can help to make your work profitable.

C. A. Lockwood Motor Co.

Fordsons and Farm Implements
Roseburg, Oregon

THURSDAY NIGHT MARCH 22 GREAT RADIO PROGRAM

Dodge Brothers, Inc. in association with Joseph M. Schenck, president of the United Artists Corporation, will again transform the nation into one vast radio broadcasting studio on Thursday evening, March 22nd, between six and seven o'clock, Pacific standard time, when one of the largest radio audiences ever reached will hear the voices of the world's most famous motion picture stars.

In a radio program that fairly captures imagination, listeners in all parts of the world will hear alternatingly from New York and Hollywood, where Charles Chaplin will deliver a series of humorous anecdotes in various dialects. D. W. Griffith will talk on "Love and Marriage," John Barrymore will do his famous "Hamlet" soliloquy, with special musical accompaniment. Norma Talmadge will discuss "Modern Fashions and how Hollywood is bringing Paris to California."

Dolores Del Rio will make her debut in this country as a singer, rendering a Spanish song with violin, cello and piano accompaniment; and Douglas Fairbanks, who will act as Master of Ceremonies, in addition to introducing the above stars, will give a talk on "Sports and Athletics."

From New York, E. G. Willmer, president of Dodge Brothers, Inc., comes before the microphone in an answering message of appreciation to the nation for their tremendous interest in the "Victory" hour broadcast last January.

Paul Whiteman and his band, also broadcasting from New York, will repeat his success on the "Victory" hour.

The famous United Artists stars will gather at the studio bungalow of Douglas Fairbanks, renowned as a rendezvous of world celebrities, which will be transformed by radio technicians into a soundless broadcasting chamber, and from here the lines will run directly to New York, where the program will click back and forth from Hollywood.

The program is the result of negotiations which have been carried on for over three weeks' time, by wire, telephone, and personal conference between executives in New York, Detroit and Los Angeles, and involving representatives of United Artists, the National Broadcasting Company, the American Telephone and Telegraph Company, and Dodge Brothers.

Through the courtesy of the Check-Nut Coffee Company, who yielded the Maxwell House Coffee hour to Dodge Brothers, an hour was obtained that is ideally suitable from a time standpoint for all sections of the country.

MASONS ATTENTION

Special communication Laurel Lodge No. 13, A. F. & A. M., Wednesday, March 21st, 7:30 p. m. Work in the F. C. degree.
W. F. HARRIS, Secy.

MARKET NEWS BROCCOLI

The following information on the broccoli market is furnished by the Portland bureau of the department of agriculture:

Carlot shipments reported for Monday: C. Calif. 44, Ore. 12; total 56.

Total shipments to date this season of cauliflower and broccoli, 7427.

Total shipments to same date last season of cauliflower and broccoli, 5411.

Chicago market today: 33 clear, 12 Calif., 2 Ore. arrived. 71 cars on track including broken. Supplies heavy, demand and trading moderate, market slightly weaker. Calif. pony crates, best stock, \$1.90; fair, \$1.50-1.75; poorer, \$1.25.

Oregon crates, med. to lrg., best \$1.60-1.65; poorer \$1.25.

Prune Talks

Douglas Cooperative Prune Association
By W. F. Drager

Prunes in Packages

There are several different kinds of containers in which our prunes are sold to the trade. Up to about the year 1920 most of our prunes were shipped in wooden boxes either 25 pounds or 50 pounds each. But during the past few years a greater tonnage has been shipped in export bags containing from 55 kilos (121 lbs.) to 100 kilos (220 lbs.). These have been shipped usually to interior Europe. Canadian jobbers are buyers of prunes in cartons. These cartons usually contain either two pounds or five pounds each. We believe that the carton will some day be the popular method of handling prunes. This is the most sanitary way of handling prunes and a very convenient way for the retailer. Prune cartons are very attractive in appearance and receding matter can be printed on them. They look well on the shelves of our retail stores. The consumer can buy a 2-pound carton of large prunes for twenty-five cents which is enough for a small family at one time perhaps. Prunes at such a price are cheap enough for the consumer and at the same time there is profit enough for the growers and the middle men as well. It is possible

Reconditioned NASH CARS

Lead the World in USED CAR value

One of the very best used cars to buy is a Reconditioned Nash.

At the great Nash factories, extra hours of extra care have gone into its manufacture. Before its first owner gets it, every mechanical unit is tested again and again, to be certain it is right.

Then, when its first owner comes in and buys "another Nash" because this one has been so satisfactory, we take it, and our experienced Nash mechanics test it. They discover what it needs, and do everything necessary to give its second owner equally fine results.

Parts that show the slightest wear are replaced by new and genuine Nash parts.

It costs you no more to buy one of these Reconditioned Nash cars than an ordinary used car. We price them low for immediate clearance, and to acquaint more people with the many advantages of Nash ownership.

Come in, look over the unusually fine selection on hand at this time. Then see how easily you can own one of this better type of used cars on our exceptionally easy terms.

Nash Reconditioned Cars Lead the World in Used Car Value

L. R. CHAMBERS MOTOR COMPANY

New Garage and Service Station
Oak and Main Sts. Roseburg Phone 649

RADIO PROGRAMS

Portland Stations

KGW, 491.5-6:30 p. m., dinner music; 6:30-7, California Fruit Growers' Exchange program, the Pacific coast network; 7:30, music by the concert trio with Jane Burns, soprano soloist; 7:30-7:45, poultry feature; 7:45-8, book chat; 8:50, Jack

and Ethyl, the motormates; 8:30-9, Royal Baking Powder concert from the Pacific coast network; 9:30, concert presented over the network; 9:30-10, concert of vocal and orchestral music; 10-11, dance music from the Pacific coast network; 11-12, dance music broadcast from Seattle through KOMO and KGW. KOIN, 319-5:15-6, topay-turvey time; 6:7, dinner concert; 7:7-15, amusement guide and utility; 7:15-8, orchestra concert; 8:9, hand concert; 9:10, studio art-

ists' program; 10-11:30, dance music.

KEX, 277.6-6:30, utility; 6:30-7, children's program; 7-8, dance music; 8-9, studio feature; 9-10, studio recital; 10-12, dance music.

Other Coast Stations

KOAC, Corvallis, Ore., 270.1-7:30 p. m., campus reporter and music; 7:30-7:30, farm news writing; 7:30-7:45, farm utility program; 7:45-8, chat with the homemaker; 8-9, grange lecture hour.

KFOA, Seattle, Wash., 447.5-6:30 p. m., special entertainment; 6:30-7, network concert; 7:30, variety program; 7:30-7:45, poultry talk; 7:45-8, book chat; 8-9, network concert; 9-10, Pacific coast network program; 10-11, dance music.

KOMU, Seattle, Wash., 303.9-6:30 p. m., concert orchestra; 6:30-7, network concert; 7:30, studio music; 7:30-8, concert orchestra; 8:30, Pacific coast network program; 9:30-10:30, diversified studio program; 10:30-11, news and quartet harmony; 11:12:30, orchestra and popular songs.

KGO, Oakland, Calif., 384.4-6:30 p. m., utility; 6:30-7, network concert; 7:30-8, farm program; 8:30, Pacific coast network program; 9:30-10, negro choir; 10-11, Hotel St. Francis dance orchestra.

KJH, Seattle, Wash., 348.6-6:30 p. m., time signals and utility; 6:30-7:30, dance program; 7:30-8, studio music; 8-10, studio program; 10, time signals; 10-12, dance orchestra.

KFI, Los Angeles, Calif., 468.5-6:30-6:30 p. m., orchestra; 6:30-7, network concert; 7:30, trio; 7:30-8, blues and ballads; 8-9, network concert; 9-10, Pacific coast network program; 10, concert orchestra.

KFON, Long Beach, Calif., 241.5-6:15 p. m., Doris and Clarence; 6:15-6:45, concert orchestra; 6:45-7, educational talk; 7-8, novelty program; 8-9, hand concert; 9:30, studio program; 9:30-10, sports; 10-12, dance frolic.

KHO, Spokane, Wash., 370.2-6:30-7 p. m., California Fruit Growers' concert; 7-8, concert orchestra; 8-9, network concert; 9-10, network production.

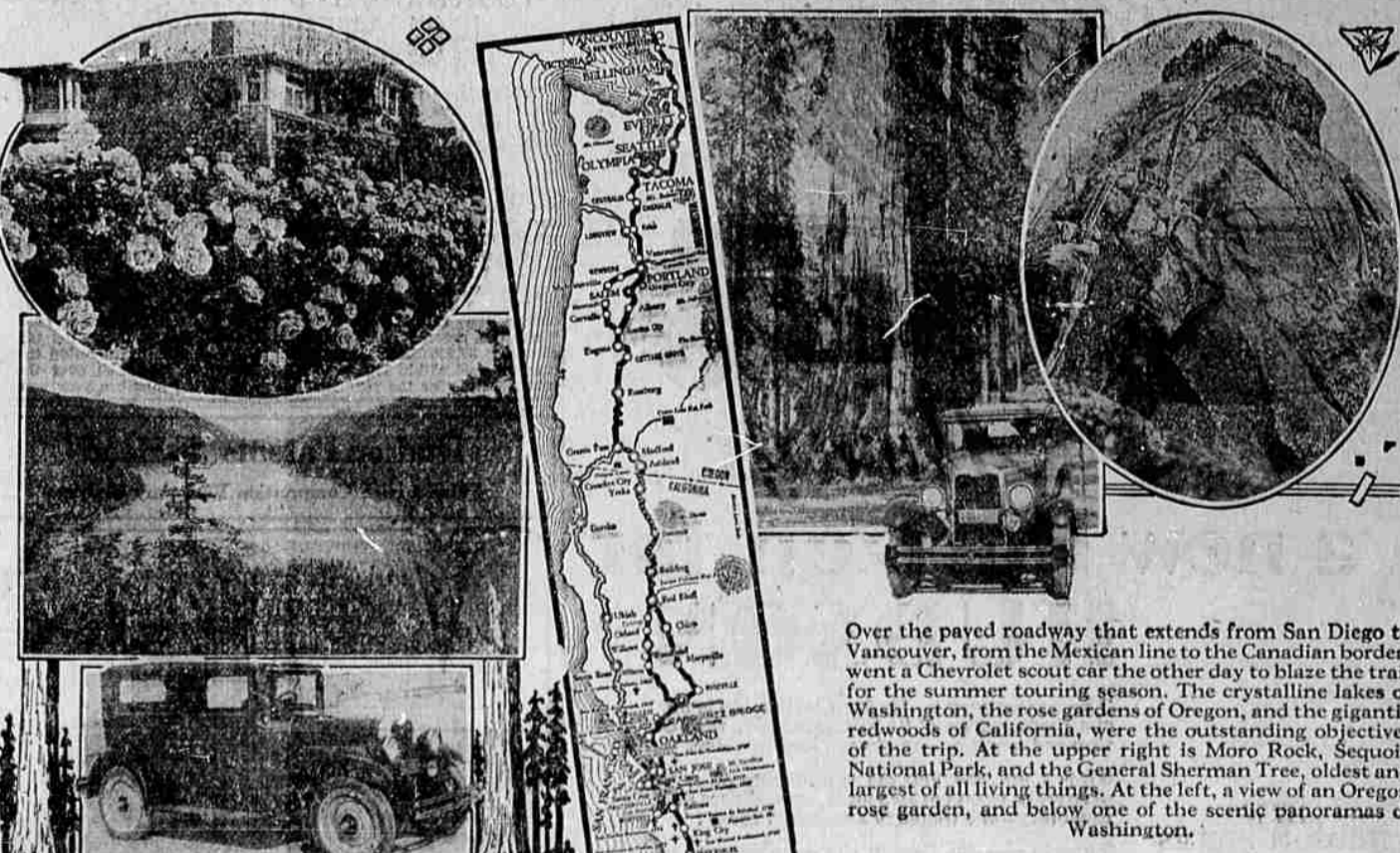
KPO, San Francisco, Calif., 422.3-4:30 p. m., town crier; 6:30-7, network concert; 7:30, Gipsy and Maria; 8-9, Atwater Kelt hour; 9-10, movies plan; 10-11, network concert; 11-12, dance orchestra.

KYA, San Francisco, Calif., 351.2-5:59-7:30 p. m., Golden Gate crier; 7:30, Women's club program; 8-9, lecture; 9-10, popular program; 10-12, dance frolic.

KFRU, San Francisco, Calif., 454.3-6:30-7:30 p. m., instrumental music by the Cecilians; 8-9, courtesy concert; 9-10, studio music; 10-12, dance orchestra.

KMO, Tacoma, Wash., 254.1-6:30 p. m., St. Louis program; 6:30-7, studio concert; 7-8, courtesy music; 8-9, studio entertainment; 9-10, studio concert.

THE PACIFIC HIGHWAY - GREAT SCENIC HIGHWAY OF THE WEST



The world's greatest highway extends from the Canadian border to Mexico. Traversing the scenic regions of Washington, Oregon and California, paved throughout practically its entire length, it offers to the tourist the best and most comprehensive picture of the attractions of the Pacific coast.

A Chevrolet party made the trip over the Pacific highway on a three-day tour a short time ago and found it all that the press agents had promised and more. The start was made at San Diego where Junipero Serra, more than one hundred and fifty years ago, founded the first of the Mission stations and began his march northward over what later was to be El Camino Real. For two hundred and fifty miles the Pacific Highway follows the ocean shore past a succession of bathing beaches, by ruined Missions, through the beautiful Gaviota Pass by way of the Pinnacles National

Monument, which was discovered by the British explorer, George Vancouver, one hundred and thirty-six years ago.

The route then follows the Circle of Enchantment through the beautiful Monterey Bay region where the first capital of California was established and which plays an important part in R. H. Dana's "Two Years Before the Mast." The next interesting objectives are the gigantic redwoods of California Redwood Park near Santa Cruz and the route leads over the rolling hills to the San Francisco Bay region and the Golden Gate. Here was located the Presidio in the days of Spain and the chief outfitting point for the mines in the days of '49.

From San Francisco Bay the Pacific Highway veers inland, passing through Sacramento by Sutter's Fort, the chief objective of the immigrant trains of the early days in California. Mt. Lassen Na-

the Three Sisters, Jefferson, Washington and Hood, Crater Lake, a National Park, unique and awe-inspiring, and the Oregon Caves, strange formations that have come down from the lava bed of a prehistoric age—all these greet the traveler as he passes over the Oregon-California boundary and drives northward into Washington.

The Rogue River Valley is one of the most picturesque valleys of the west and the Willamette Valley is a charming district that stirs the imagination and offers a peaceful scenic panorama, the like of which may be found nowhere else in the world. Then on to Salem, capital city of Oregon, winding through the Cascade Mountains to Portland where a side trip is offered over the Columbia River Highway, one of the greatest engineering feats of the world.

The Pacific Highway then passes through the verdant region of western Washington from Co-

lumbia to Puget Sound. All along the route may be glimpsed Mt. Rainier and Mt. St. Helens, snow-capped giants of the western shore. Mt. Olympus and the Olympic range and Olympia, capital city of Washington, are the next interesting objectives of the northern tour. Puget Sound, a great inland sea, whose western skyline is formed by the snow-capped Olympic range, the cities of Tacoma, Seattle and Bellingham, and, finally, British Columbia itself. Vancouver with the beautiful inlet of Burrard, the beautiful Gulf of Georgia and the many green islands between the mainland and Vancouver Island and Victoria, capital of British Columbia, with the historic straits of Juan de Fuca, are names and objects to compare with in describing the scenic glories of the west. Nowhere else in the world may the traveler find a more interesting vacation land than that which lies along the Pacific Highway, the greatest of the modern arteries of travel.

Over the paved roadway that extends from San Diego to Vancouver, from the Mexican line to the Canadian border, went a Chevrolet scout car the other day to blaze the trail for the summer touring season. The crystalline lakes of Washington, the rose gardens of Oregon, and the gigantic redwoods of California, were the outstanding objectives of the trip. At the upper right is Moro Rock, Sequoia National Park, and the General Sherman Tree, oldest and largest of all living things. At the left, a view of an Oregon rose garden, and below one of the scenic panoramas of Washington.

The New DURANT-STAR

STAR

Largest closed car for the World's lowest price

HERE

Monday, March 26

Deliveries start at once

RAPP BROTHERS
DOUGLAS COUNTY DISTRIBUTORS
Phone 371 — Roseburg — Cass and Pine

STERLING PLASTER BOARD

We have just received a carload of this new type board manufactured by the U. S. Gypsum Company. All vertical edges full bound, resulting in perfect sheets, no broken or frayed edges. Easier to apply and makes exceedingly smooth wall.

It costs no more than old style board.

COEN LUMBER COMPANY

MILL WORK LUMBER BUILDING MATERIALS