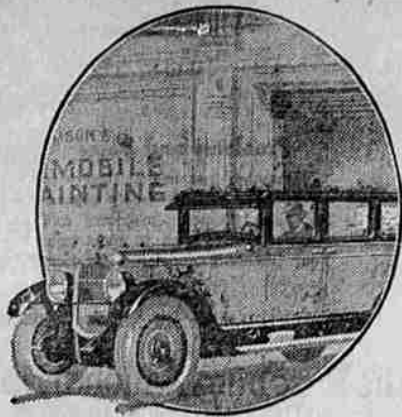


Proxlin--- The Perfect Finish



PERFECT is a strong word to use in connection with the finishing of an automobile. Proxlin, however, fully justifies its use. When a newly finished car will stand excessive heat without the slightest effect; when tar, mud, dust or the most severe weather conditions will not harm its beautiful semi-gloss; when there is no possibility of the colors losing their "new" appearance, then can the word "perfect" be truly applied to a protective and beautifying finish such as Proxlin. Come in and let us tell you more about it and demonstrate every statement we have made above.

M. GILBERT WOOD

ACME QUALITY



504 W. Cass, near Depot
Roseburg, Ore.

Also Expert Car Cleaning

SNOW SURVEY OVER UMPUQUA HIGHWAY ROUTE IS PLANNED

Ray Conway Discusses Plans With Members of Highway Commission.

A snow survey to determine the exact snow levels along the Umpqua highway route in the Cascade district is to be made in the very near future by Ray Conway of the Oregon State Motor association. Mr. Conway several months ago volunteered to do this work, and expects to make a trip over the road from the forest boundary to Diamond Lake to secure accurate data on the amount of snowfall during the season. Mr. Conway, who is an expert in such work, will be able to gather much important information that will be of use in future consideration of the Umpqua highway project.

From general known conditions it is certain that a road into eastern Oregon, by way of the Diamond Lake pass, can be kept open all winter with only a minimum amount of labor required. This will afford the only connecting link between western and eastern Oregon except for the two roads, one at the extreme north boundary of the state and the other at the extreme south. Such a road, open for travel winter and summer, would be of extreme importance to the state at large.

Several months ago the state highway engineer advised a snow survey and this is now being planned by Mr. Conway. He has consulted with Chairman Van Duzer of the state highway commission and also with Judge Sawyer, a member of the commission, and both are very anxious to have the work done. Judge Sawyer is now in the east. Mr. Conway reports, and immediately upon his return definite plans will be completed and the trip undertaken.

Start the new season with a tractor that has power to do your work the way you want it.

See the McCormick-Deering 1929 at Wharton Bros.

NATIONALLY KNOWN SPEAKER TO BE IN ROSEBURG FRIDAY

Considerable interest is manifest in Christian Endeavor circles throughout the county in the coming of Dr. Ira Landrith, D. D., LL.D., of Chicago, Illinois, the citizenship superintendent of the International Society of Christian Endeavor. Dr. Landrith will speak in the First Presbyterian church of Roseburg on Friday evening, January 27th, at 7:45 p. m.

Dr. Landrith is one of the foremost orators in the country and a known master of the American platform. He was former president of Ward-Belmont College, and toured the United States in 1916 with the late Governor J. Frank Hanly as the prohibition candidate for vice-president.

Dr. Landrith is touring the state under the auspices of various Christian Endeavor Unions and the Oregon Christian Endeavor Union. He has been traveling nationwide, speaking on the subject of law enforcement and world peace. The international slogan, adopted by the Christian Endeavor societies in their last World's Convention, was "A Warless World," and the slogan "A Warless Nation by the subject" was first adopted by this society.

Dr. Landrith will also speak on the world-wide extension of the Christian Endeavor society, which is now found in nearly every country on the globe and has over 80,000 societies and 4,000,000 members.

The Kansas City Gazette-Globe says of the speaker: "As a platform man, Dr. Landrith is unsurpassed. His style mingles the elusive plantation melody, quietly permeating as the moonlight and soft as the scent of magnolias, with the precipitous fire of a soul that instantly flares out against injustice, whether it be individual or national."

The local Christian Endeavor leaders are making active preparations to make this one of the largest rallies in the history of the work. Every society will be urged to attend en masse.

Pain in Your Shoulder?

It's Probably Neuritis; Use Tysmol for Relief

Knife-like jobs of pain in the vicinity of the shoulder blade are generally due to neuritis, brought on by exposure to draughts or sudden changes of weather. In some cases there is stiffness or soreness in the muscles, making it difficult to raise the arm.

Nathan Fullerton's



The Cream of the Tobacco Crop

"Here in the Southland we know good Tobacco. It is born in us and it is the livelihood of most of us. 'The Cream of the Crop' is bought for LUCKY STRIKE. I know for it has been my duty to purchase it on the markets for years for this brand."

Buyer of Tobacco

LEE MEADOWS

Famous Pitcher of the Pittsburgh Pirates, writes:

"It requires splendid physical condition and steady nerves to take your regular turn on the mound season after season and in looking for my cigarette I was anxious to find one which could be smoked without taxing my wind or irritating my throat. I decided upon Luckies and I can safely say that I am never troubled with a cough and my wind is in splendid shape." *Lee Meadows*



"It's toasted" No Throat Irritation-No Cough.

FIGHTS LAST NIGHT

PHILADELPHIA—Joe Dundee, Baltimore, defeated Joe Simonich, Montana, (10). Babe McGorgary, Oklahoma, won a technical knockout over Bobby Brown, Atlantic City (10).

NEW YORK—"Cannonball" Eddie Martin, Brooklyn, defeated Dominick Petroni, New York, 10. Rene de Bos, Belgium, knocked out Sidney Friedman, New York, 1. Pierre Charles, Belgium, and Jack Demave, Hoboken, N. J., drew, 10. Lou Barba, New York, won from Marco Polo, Pittsburgh, 6. Ted Sandwina, Sioux City, outpointed Johnny Urban, Pittsburgh, 6.

MIAMI, Fla.—Young Stribling, Macon, Ga., knocked out Martin Burke, New Orleans, 1.

TORONTO, Ont.—Willie Davis, Pittsburgh, won from Ernie Jarvis, England, 10.

NEWARK, N. J.—Willie Greb, Scranton, defeated Eddie Horner, St. Louis, 10.

CHICAGO—Teddy Enterbrook, Niles, Ohio, outpointed Howard Bentz, Milwaukee, 10.

MEMPHIS, Tenn., Jan. 24.—Red

NOTICE TO ALL EX-NAVY MEN

The Navy Club will hold its quarterly banquet and get-together meeting 7:00 p. m. Thursday, January 26, 1928, at the Rose Hotel. Call T. P. Byram, 490-J, by Wednesday noon for reservations, as proper arrangements can be made. Plates \$1.00.

By direction of the Skipper. Signed: T. P. Byram.

CALL FOR BIDS

Sealed bids will be received for a gymnasium by School District No. 12 (Gilde school) at two o'clock p. m. January 27, 1928, at the school house.

Plans and specifications may be obtained at the office of L. W. Metzger, Roseburg, or from the school clerk, H. D. Conine, upon deposit of five dollars, which will be returned upon return of plans.

The board reserves the right to reject any or all bids or to accept the one considered best for the district.

GLIDE SCHOOL BOARD.

By H. D. Conine Clerk.

POWER

Power is the mover of goods—the very source of transportation, the essential permanent servant of commerce.

In the new line of Graham Brothers Trucks and Commercial Cars power is the perfect servant—sure, smooth, irresistible, elastic in its capabilities, instantly responsive to your bidding.

Four and Six cylinder engines . . . Bodies to fit your business . . . Prices extremely low.

J. O. NEWLAND & SON
Roseburg—Phone 458

GRAHAM BROTHERS TRUCKS

Sold and Serviced by Dodge Brothers Dealers Everywhere

RADIO PROGRAMS

Portland Stations

KGW, 49.15—617 p. m., dinner music; 7:15-8 p. m., music by the concert trio; 7:30-7:45, theft talk; 7:45-8, book club; 8:30-9, "Everready Hour," the Pacific coast network; 8:30-9, auction bridge game; 9:30, "Hollywood Tales"; 9:30-10:30, music by the Venetian orchestra, with Madame Leah Leaska and Dorothy Lewis, soloists.

KEX, 222—6:30 p. m., utility; 6:30-7, children's program; 7:30, dance music; 8:10, studio feature; 10:12, dance music.

KOIN, 319—6:17 p. m., dinner concert; 7:15, amusement guide; 7:15-8, orchestra music; 8:15-8:30, talk; 8:15-8:30, humane program; 8:30-9, Halowat question hour; 9:20, vaudeville; 9:20-9:40, Avel-Radio Boys.

KMO, Tacoma, Wash., 354.1—8:30 p. m., concert; 9:11-10:12, dance orchestra; 11:30-12, theatrical frolic.

KHO, Spokane, Wash., 370.2—5:46 p. m., service period; 6:17, concert orchestra; 7:8, music; 8:30-9, Everready hour; 8:30-9, auction bridge; 9:10, Pacific coast network music; 10:12, Davenport hotel dance orchestra, intermission solos.

KFOA, Seattle, Wash., 447.5—6:30 p. m., concert trio; 6:30-7, music; 7:8, concert music; 8:30-9, auction bridge; 9:10, dramatic program through the Pacific coast network; 10:11, male quartet; 11:12-12:59, Herb Wiedel's dance orchestra.

KGO, Oakland, Calif., 334.4—6:55 p. m., dinner concert; 8:15-7:30, news, weather, stocks and market reports; 8:30-9, Everready hour; 8:30-9, auction bridge; 9:10, dramatic program through the Pacific coast network.

KFI, Los Angeles, Calif., 487—6:15 p. m., piano solo; 6:15, lecture; 6:20, vocal and instrumental solos; 7, orchestra; 7:30, popular ballads; 8, Everready hour; 8:30-9, auction bridge; 9:10, dramatic program through the Pacific coast network; 10, Metropolitan dance orchestra.

KFWB, Hollywood, Calif., 361.2—

DEPOT BARBER SHOP SOLD TO NEW COMER

The Depot Barber Shop, located on West Cass street, has been sold by Ray Shupe and Fred S. Miller to Jim Evans, a recent arrival here from Portland, the deal being consummated this week. Mr. Evans has taken immediate charge of the business and plans to carry it on in the same satisfactory manner as in the past. Mr. Shupe will remain at the shop for this week to assist the new owner. Mr. Shupe and Mr. Miller are undecided as yet what their future business activity will be.

GRANGE HOLDS MEETING

South Deer Creek Grange, at its meeting January 21, instructed Worthy Master Wm. A. Karcher to attend the meeting called by the Agricultural Committee of the Roseburg Kiwanis Club. Three members, Wm. A. Karcher, Fred C. Caebahn and Ernest Trussel, volunteered to circulate the Grange income tax petitions in their respective neighborhoods, and considerable discussion took place as to ways and means of raising funds with which to repair the hall.

TWO HOMES MADE HAPPY

By Women Who Used Lydia E. Pinkham's Vegetable Compound

"I have taken Lydia E. Pinkham's Vegetable Compound and I think it is the most wonderful medicine I ever tried." In the statement made by Mrs. Goldie Shoup of St. Joseph, Ill., she declares that after taking the Compound she is in better health than before.

Mrs. J. Storms of 29 Lane Street, Paterson, N. J., writes: "I can not speak too highly of your medicine and I recommend it to all my friends."

These statements were taken from two enthusiastic letters which tell of the help that has been received from using the Vegetable Compound.

Both Mrs. Shoup and Mrs. Storms were in a run-down condition which caused them much unhappiness. When women are suffering from lack of strength and from weakness, their own life and that of their family is affected. When they feel well taking the Compound she is in better health than before.

Are you on the Sunlit Road to Better Health?

COWS EAT POWER POLES

(Associated Press Special Wire) MEDFORD, Ore., Jan. 23.—The cows in the Bucksfoot district of Jackson county are eating up the poles of the California-Oregon Power company, according to G. H. Schenple, line patrolman, who discovered a herd chewing away on several new poles Saturday. The power company has ordered rock salt distributed near the poles to stop the inroads. The salt.

ATTENTION ELKS

Initiation and lunch Thursday night, Jan. 26, 1928. D. WAITE, Secy.

SHEET METAL KELLY--PATTON Plumbing

Sanitary Plumbing, Heating and Ventilating Engineers

We have come to Roseburg and invested our money, believing that there is a bright future for Roseburg. Come in and get acquainted, our prices will be as low as good material and first class workmanship will permit.

ESTIMATES FURNISHED ON ALL WORK. Phone 464 504 Jackson St. Roseburg

SERVICE, INDEED

Here's the Kid himself with a load of fresh groceries and vegetables direct from the Economy to your home with the food products you ordered. We take all the burden of delivery from your shoulders, and the cost is no more. Call us up by phone.

ECONOMY GROCERY

O. L. JOHNSON "The Store That Serves You Best" 344 N. Jackson Street Phone 63

NURSERY TREES

Large and complete stock of walnut, peach, plum, pear, cherry, apple, fig, chestnut, filbert, persimmon, etc. Selected fruit trees for replants. Fifteen varieties of grapes. Street and shade trees, also roses, vines and other ornamentals.

Why not deal direct with the growers and owner, securing home grown acclimated stock, and see what you are buying? Orders placed now will be reserved until you are ready to plant.

Nursery and Sales Yard 8 miles south of Roseburg on Pacific Highway, or 1 mile north of Dillard Station. C. E. MOYER PHONE 48F13 ROSEBURG, ORE.