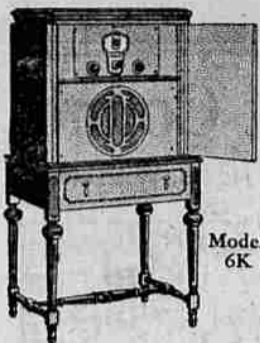


Electric Sets* scientifically correct KOLSTER RADIO



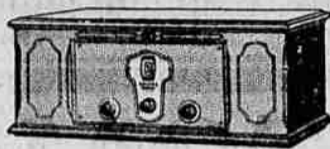
No batteries of any kind!

You simply buy your Kolster Electric Radio, plug into the nearest light socket, switch on, tune in and... the world of broadcasting is yours!

Nothing to attend to at all. Simply switch on and play it.

To make the best electric set at the lowest possible price was the problem Kolster determined to solve. These sets are the solution, and they show those extra dollars of value which will win your decision.

Compare values and... you... will... buy... Kolster.



for example:

6K. This is the six-tube full console electric (battery-less) Kolster Radio. Cabinet of walnut with special built-in cone speaker. Price, \$250

The 6F is the six-tube table model electric (battery-less) Kolster Radio, enclosed in attractive mahogany cabinet. Price, \$160

* Kolster Electric Sets use the new AC tubes. No batteries of any kind required. Operated solely on AC house current (100-120 volts—60 cycles). Indoor or outdoor antenna.

Kolster battery-operated models range in price from \$82.50 to \$375. There is also the Kolster Power Cone speaker at \$175. Reasonable time payments if desired on all Kolster equipment.

OTT'S MUSIC STORE
218 N. Jackson St.,
Roseburg, Oregon

Enjoy Kolster Radio Hour of Famous Composers every Wednesday evening over the Nation-Wide Columbia Broadcasting System. At 9 p. m. Eastern time.

5,000 VISITORS SEE NEW FORDS

Lockwood Co. Show Rooms Thronged All Day By Interested Public.

A complete description of the new line of Ford automobiles was made public in Roseburg on Saturday last.

When the reception closed at 10 p. m. it was estimated that five thousand people had visited the show rooms and learned the details of this revolutionary car which is to succeed the famous model "T" Ford after more than nineteen years of leadership in the low price, light car field.

Visitors to the show-rooms on Saturday night included city officials, heads of civic, commercial and professional organizations and many prominent business men. The entire sales force of the C. A. Lockwood Motor company was kept busy throughout the day and evening pointing out the new features of this new car, which Henry Ford himself has described as being "superior in design and performance to any now available in the low price, light car field."

Even before the display rooms were opened at 8 a. m. there was a line of visitors on hand to be the first to get the story of the new cars. On all sides were heard comments of surprise at the striking change in the appearance of the new Ford line. The low rakish lines, the striking new colors and the luxurious equipment of these new automobiles, made a marked impression upon the crowds of visitors.

Even more impressive to the visitors, however, were the details of performance as they were unfolded by attendants. Visitors were particularly struck with the speed, pick-up and ease of handling of the new cars, and with the fact that they are equipped with four-wheel brakes, shock absorbers and standard gear shift transmission of the type used in cars in a much higher price class.

Attendants at the display rooms were overwhelmed with requests for private demonstrations of the new models, and it is expected that the demand for such demonstrations will continue for weeks to come.

For factories at Detroit and branch plants in other sections of the country are now preparing for capacity production and it is expected that all dealers will be able to meet the demand in full within the next few weeks.

The design of the new line is so distinctly different from that of the model "T" that the Detroit factory and branch plants have had to undergo a complete equipment change to produce the new cars. It is expected, however, that the next few weeks will see all former Ford production records broken.

In the meantime Henry Ford has announced that manufacture of replacement parts for model "T" Ford cars will continue to be an important part of the Ford business. It is estimated that there are still more than nine million model "T" Ford cars in operation and the policy of the Ford Motor company it is said, will be to continue supplying parts for these cars as long as there is any demand for them.

FOUR DODGES GO OUT ON SATURDAY

Saturday was a specially good day for Dodge car business, the J. O. Newland & Son organization delivering three new cars that day. One of them went for spot cash, the second was practically all cash and the third on contract basis. These sales made a total of four Dodges for Dec. to date, although the new cars will not go into commission until January 1. J. O. Newland & Son consider this an auspicious closing for the year 1927, with still opportunity for other sales before the year is gone.

RADIO PROGRAMS

Portland Stations
KGW, 4915—8 to 7 p. m., dinner concert; 7:45 to 8 p. m., lecture; 8 to 9 p. m., orchestra; 9 to 10 p. m., "The Variations at Tientsin"; 10 to 11 p. m., Silver King frolic.
KOIN, 316—5:15 p. m., topography time; 6:7, dinner concert; 7:7-15, amusement guide and utility; 7:15-8, orchestra concert; 8-10, studio artists' dance frolic.
KEX, 239—5:30-6:30, "Our Gang"; 6:30-7, utility; 7-8, trio; 8-9, studio feature; 9, weather reports; 9-10, San Su Strutters.
Other Coast Stations
KOAC, Corvallis, 270.1—7:00-7:30 p. m., the campus reporter and

pany will contract for 100 acres seed peas.
Oregon City—Hawley Pulp & Paper Mill "A" reopens. New mill will have 225-inch paper machine, largest on Pacific coast.
Portland—Portland Gas & Coke Co. will spend \$110,000 on smoke eliminator.
Portland horsemeat shipments during November totaled 538,534 pounds.
Oregon this year had 3500 acres of mint, producing 130,000 pounds oil, worth \$590,000.
Medford postal receipts for November were 13 per cent above November, 1926.
Steel mill laid on Great Northern Denham extension to Klamath Falls.
Oregon has 13,223,369 acres of national forest reserves.

CHRISTMAS CANDY

Biggest stock, best prices. Dandy candy canes and everything at PETTEY'S

MONEY TO LOAN

Turkey money, prune money, wool money and all kinds of money that belongs to the farmers; also money from insurance company for long time loans.
See RICE & RICE, licensed Bond Brokers.

IT'S NOT TOO LATE

You can still have your Xmas and New Year announcements printed at the News-Review job printing department. Orders filled out the day received. If you have neglected to have them printed bring along your order and we will see that you are accommodated.

music; 7:30 p. m., "Making Baby Beef," Prof. E. L. Foster; 7:40 p. m., Timely Home topics; 7:45 p. m., chats with the Home-maker; 8:00 p. m., Poems of the Oregon country, E. T. Reel; 8:05 p. m., offerings in American literature, No. 12.
KFOA, Seattle, Wash., 1475—5-6 p. m., children's program; 6-6:30, "kiddies" entertainment; 7:30-7:45, poultry talk; 8-9, studio concert from KGW; 9-10, Pacific coast network program.
KOMO, Seattle, Wash., 305.9—6 p. m., concert orchestra; 8, concert orchestra; 9, quartet; 9:30, concert orchestra; 8, concert orchestra and soloists; 9-10, Pacific coast network program; 10-12:30, orchestra and popular songs.
KGO, Oakland, Cal., 384.4—6:30 p. m., Bem's little symphony orchestra; 6:35-7:30, farm program; 8-9, vaudeville entertainment; 9:30, Pacific coast network program; 10-11, Hotel St. Francis dance orchestra.
KJR, Seattle, Wash., 348.6—6:30 p. m., time signals and utility; 6:30-7:30, dance program; 7:30-8:30, orchestra program; 8:30-9, quartet; 9-10, concert orchestra; 10, time signals; 10-12, dance orchestra.
KFI, Los Angeles, Cal., 463.5—6:15 p. m., Dr. H. E. Meyers; 6:30, popular orchestra entertainment; 7:30 detective stories; 8, Calpet orchestra with Vernon Rickard as soloist; 9-10, Pacific coast network program; 10, classical concert.
KPNB, Long Beach, Cal., 241.8—6 p. m., Doris and Clarence; 6:15-7, concert orchestra; 7:30, novelty program; 8-9, band concert; 9-10, courtesy concert; 10-12, dance frolic.
KPO, San Francisco, Cal., 422.3—6:30 p. m., town crier; 6:30-7:30, orchestra concert; 8-9, Altwater Kent hour; 9-10, Abas' string quartet; 10-11, State restaurant orchestra.
KYA, San Francisco, Cal., 309.1—5:30-6:30 p. m., orchestra; 6:30-6:45, health talk; 6:45, Golden Gate crier; 8-9, diversified studio program; 9-10, Alpine club program; 10-11, dance frolic.
KHJ, Los Angeles, Cal., 405—6:30 p. m., concert trio; 6:30-7:20, children's hour; 7:20-7:30, scripture reading; 7:45, scientific lecture; 8:10, quartet and vocal and instrumental solo music.
KFRC, San Francisco, Cal., 454.3—6:30-7:30 p. m., instrumental music by the Cecilians; 8-9, courtesy concert; 9-10, old-time melodies; 10-12, dance orchestra.
KMO, Tacoma, Wash., 254.1—8:15 p. m., dental talk; 8:15-8:30, music; 8:30-9, Navytex program; 9-10, Oil City twins.

NOTICE TO ALL W. B. A. MEMBERS
Regular meeting Dec. 22. Election of officers and other business of importance.
By order of Mary Wilcox, Pres.
SHORT TALKS BY THOUGHTFUL MOTHERS
A California (Long Beach) Mother speaks: "Only a mother who has passed through anxious hours of fear of croup can appreciate our feeling of gratitude toward Foley's Honey and Tar Compound. It stopped Junior's dreadful coughing croupy cough the very first night he took it and it was a great relief to see him drop into a quiet sleep. Since then, we have many times proven its reliability for coughs and colds." Good also for whooping cough. Sold everywhere.

FOUR-WHEEL BRAKES FOR AMERICA'S FASTEST FOUR

DODGE BROTHERS ADD NEW EQUIPMENT AT NO INCREASE IN PRICE

Four-wheel brakes of the latest and most efficient Steel-draulic type now insure deceleration equal to the amazing acceleration of America's Fastest Four!

Swift, time-saving travel is now made still safer by increased braking efficiency.

Step on the brake pedal and feel the positive, cushioned braking, absolutely uniform on all four wheels.

At \$875 for the Sedan, f. o. b. Detroit, this famous Four with complete factory equipment, represents the smartest, swiftest, sturdiest, low-cost transportation money can buy.

The car is roomy—yet compact.

Turns in a 38-foot street—parks in 17½ feet of curb space—yet provides ample room and exceptional comfort for five adults.

Spring length 85% of wheel-base—the longest in its price class.

J. O. NEWLAND & SON
Roseburg, Oregon

DODGE BROTHERS, INC.

OLYMPIC RUNNER SEEMS IMPROVED

(Associated Press—Leased Wire)
DECATUR, Ills., Dec. 21.—Physicians today expressed high hope for the recovery of Loren Murchison, Olympic sprinter who



Loren Murchison has been ill for a fortnight. Serious treatment for the cerebral spinal meningitis from which he has been suffering, is being continued.

C. A. LOCKWOOD MOTOR CO.

Roseburg, Oregon

Greetings of the Season

SEE THE NEW FORD

a BUICK for Christmas

Make this Christmas last for thousands of miles

There's a way to make this Christmas a long-remembered day for your family. Surprise them on Christmas morning with a wonderful new Buick for 1928.

Nothing you could choose would give them greater happiness.

The liberal G. M. A. C. time payment plan is available if desired.

MOTOR SHOP GARAGE

DISTRIBUTORS FOR DOUGLAS COUNTY

PHONE 268 OAK AND ROSE STS