

NASH

Leads the World in Motor Car Values

Come Drive



21 New Models—All SIXES

The most

Powerful

cars Nash ever built

3
NEW
SERIES
NEW
LOWER
PRICES

\$1030
Upwards

The great POWER of these new Nash models will be a revelation to you. They "pull" the steepest grades or the heaviest going with absolutely amazing ease and smoothness.

For there's EXTRA power engineered into every Nash motor. They have the extra efficiency of the STRAIGHT LINE drive so that Nash power flows directly from the engine to the rear axle in a straight line.

They take hills without a note of strain—without the least of laboring. Come DRIVE a new Nash. Test out the QUANTITY of its power as well as the QUALITY.

The newly-refined 7-bearing motors give Nash the world's smoothest power-flow throughout the whole range of use.

All crankshafts are balanced integrally with clutch and flywheel to make the new Nash the smoothest, "sweetest" car you ever drove.

And they're the EASIEST riding, easiest steering cars you ever handled with their new secret process alloy-steel springs and newly-improved steering mechanism.

COME in today and select the model you want to drive. New LOWER prices make these new models the greatest values on the market.

L. R. CHAMBERS MOTOR COMPANY

New Garage and Service Station

Oak and Main Sts.

Roseburg

Phone 649

TRUCK LINE SUED

Suit was brought in the circuit court yesterday by the Douglas Creditors' association against the Southern Oregon Truck Lines and an attachment served on the business. It is understood, however, that the company had previously discontinued business here, and is moving headquarters to Portland. The local suit was brought by the creditors' association on behalf of the Roseburg Garage. R. B. Conpton is the attorney representing the collection association.

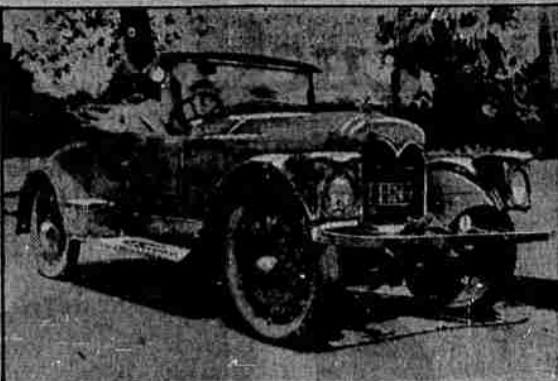
PICTURE AT IDEYLD PARK

Picture at Ideyld park.

HIGH FINANCE

"A dime? What do you want a dime for?" "Well, mister, I'll tell yer. I've got five hundred and ninety-nine thousand, nine hundred and ninety-nine dollars and ninety cents, and I'd jes' love to make it a million." —Life.

Dodge Brothers' Chassis With All-Copper Body



The latest development in automobile body design and construction is shown above. It is an all-copper body built on a Dodge Brothers chassis. It was made by Philip Lewis, an Auckland, New Zealand, coppersmith and is believed to be the only all-copper automobile body in the world. The copper is in the natural color, is unpainted, and as it was shaped

by beating it is full of bumps and dents. Mr. Lewis states that in these days of heavy traffic and frequent collisions his body has an advantage in that one more bump here and there doesn't make much difference in the car's appearance. He has driven his car 75,000 miles over all kinds of New Zealand roads and both chassis and body, he believes, are good for years more service.

FOOTBALL STAR DRIVES A SLAM

LOS ANGELES, Sept. 21.—With the opening of the 1927 football season, followers of the great American intercollegiate sport have turned to "doping" out the prospects of the various teams that will represent the Pacific coast conference colleges. The greatest optimism is the University of Southern California. For two years Coach Howard Jones has had a football machine at the Los Angeles university that has ranked with the best in the country. Last year the Trojans missed the national championship by two points and the team was one of the most spectacular in the United States. But this year Coach Jones has to build an entirely new organization.

Sixteen of the stars of the U. S. C. football squad of 1926 finished their college careers last June, leaving but a small group of veterans with which Howard Jones must develop a team to meet the toughest schedule that the Trojans have ever faced. Morley Drury, captain of the Trojans this season, is Jones' brightest star. During the summer Drury worked for a local motion picture studio, doing hard work that kept him in excellent physical condition. During the vacation he kept in touch with the team members, making trips about Los Angeles and to the outside cities in his Star convertible cabriolet, one of the outstanding models of the Star line and a car that is very popular with the students of the University of Southern California because of the fact that it is the choice of several of the star Trojan athletes.

at the scene of a fire or a disturbance of the peace. The presence of these facilities for coping with emergency needs has already been the means of much saving in life and property which might otherwise have been destroyed. Dayton officials declare and it is predicted that their usefulness will be increasingly evident as time goes on.

The Chrysler "62" was selected by the Dayton company's experts after a careful survey of available automobile possibilities. They gave preference to the new car, among other reasons, because of its proved ability to maintain a high speed, 62 miles an hour and more being assured by its powerful engine; its rapid acceleration; its responsiveness to drivers' control, resulting in unusual ease and certainty of handling while dashing in and out of congested traffic; and its four wheel hydraulic brakes, which bring the car to a quick and certain stop when necessary.

SOUTH AFRICA CAR BUYERS PREFER U. S. MADE AUTOS

Approximately nine-tenths of all motor cars and taxicabs in the Union of South Africa are made by American manufacturers, according to estimates prepared from a special report of the office of census and statistics of the union. At the end of 1926 total registrations of motor cars and taxis amounted

4 Great Cars in 4 Great Markets

New 52 · Great New 62
Five body styles—\$725 to \$875 Seven body styles—\$1095 to \$1295

Illustrious New 72 · Imperial 80
Seven body styles—\$1495 to \$1745 Eleven body styles—\$2495 to \$3395

All prices f. o. b. Detroit, subject to current Federal excise tax

The greater values that Chrysler offers in each of its four great cars—"52," "62," "72" and Imperial "80"—are the unmistakable results of its unique policy and plan of Standardized Quality in design and manufacture.

Through Standardized Quality each Chrysler clearly is the beneficiary of all the pioneering in design, exceptional skill in engineering, precision in manufacturing and vast resources concentrated in the development and building of all other Chrysler models.



Great New Chrysler "62"—6-cylinder motor, 7-bearing crankshaft, 62 and more miles per hour. Invert-rod pistons. Oil filter and air cleaner. Ventilated crankcase. Impulse neutralizer and rubber engine mountings. New cellular type radiator. 4-wheel hydraulic brakes. Road levelers, front and rear. Seven body styles, priced from \$1095 to \$1295. F. O. B. Detroit, subject to current Federal excise tax. Chrysler dealers are in position to extend the convenience of time payments. Ask about Chrysler's attractive plan.

H. L. CONNELLY MOTOR CO.

627 N. Jackson St. Roseburg, Oregon Phone 386

CHRYSLER

to 78,130 and of this number not more than 8,000 were made in States.

in the combined bus and truck field with 10 per cent of the registrations.

LONG CONCRETE ROAD
The Jefferson Davis Highway, running between Washington and Richmond, Va., is one of the longest stretches of concrete road in the country. It runs in almost a direct line for 103 miles. Building costs for the road total \$9,600,000.

Why-the Whippet leads all light cars!



Own and drive the car that embodies all the modern features you will demand in a light car in 1928. The Whippet is over a year ahead in design, efficiency and style. More than 125,000 owners have proved its superiority in over 400,000,000 miles of driving.

Superior Quality—New Low Prices

Coach	\$625	\$795	Coupe	\$625	\$795
Touring	625	765	Sedan	725	875
Roadster	695	825	Landau	755	925
			Cabriolet	745	875
			Coupe		

Prices f. o. b. factory and specifications subject to change without notice. Willys-Corland, Inc., Toledo, Ohio

Whippet

F. W. CHASE
Salesroom 317 N. Jackson St. Phone 399 Roseburg, Ore.

Fastest Four in America Proves Its Claim to Title

Dodge Averages 67.35 miles per hour in Beating All Other Fours in Atlantic City A. A. Race

The Atlantic City (N.J.) Speedway Association, without Dodge Brothers' instigation or knowledge, bought a Dodge Brothers Four and entered it in a Labor Day race for Four cylinder stock cars. Four cars of other makes also competed. All were strictly stock cars as required by the rules of the association.

The race was for 25 miles—to determine which was "The Fastest Four in America."

The Dodge won.

Its average speed for the entire race, from a standing start, was 67.35 miles per hour (officially timed by A. A.).

Generous confirmation, to say the least, of the modest claim of "Mile-a-minute Performance!"

Even more remarkable than the speed, however, is the fact that the car had been driven only 10 days and yet was able to withstand this difficult test without once stopping.

Thus the race not only offers conclusive proof of the Dodge's superiority in speed, but stands also as a glowing tribute to the rugged materials and excellent workmanship that go to make it—America's Fastest and Finest Four!

4-DOOR SEDAN
\$875
F.O.B. DETROIT FULL FACTORY EQUIPMENT

J. O. Newland & Son
Roseburg—Phone 458

ELECTRIC COMPANY USES CHRYSLER 62 IN PUBLIC SERVICE

Public service has come in recent years to be more and more a paramount objective of American public utility concerns, and in the forefront of this modern movement a place of prominence is held by the Dayton Power & Light company, of Dayton, Ohio.

This progressive company has just purchased for its emergency service department one of the new Chrysler "62" cars, announced among the three models introduced by the Chrysler Corporation within the last few weeks.

The Dayton Power & Light company uses three automobiles in its emergency service operations. A fire alarm tapper is installed in the service division's headquarters and three shifts of drivers are engaged, so that cars are ready at all hours of the day and night to respond to every fire and police alarm as promptly as the city's public safety departments. The municipal authorities of Dayton have adopted an ordinance authorizing the use of fire whistles on these cars and granting right of way on the streets. Special bodies have been designed and built for the service cars enabling them to render effective aid on their arrival

Attention Automobile Owners

We have all the latest equipment for washing your car. High pressure system for road oil. Satisfaction guaranteed.

—Also—
The old reliable G. & J. Tires and Goodyear Solid Truck Tires.

Hohl's Garage
Stephens Street

The Big Drive Still Going

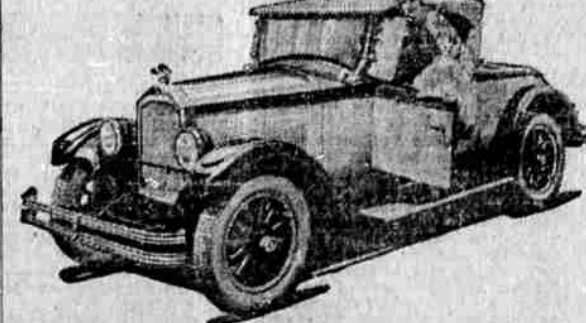
The High Standard of Quality is Always Maintained in

Kelly Springfield TIRES

We Swap New Tires for Your Old Ones.
Greasing, Oiling, Vulcanizing
Fully Equipped Power Car Washing Machine.
AUTOMATIC AIR MACHINE
ELECTRIC SERVICE
BATTERY, GENERATOR AND IGNITION
NIGHT AND DAY SERVICE

Rose Garage
PHONE 66

USES WILLYS-KNIGHT CAR



For her own use, Miss Marion Nixon, of Universal pictures, finds the "70" Willys-Knight roadster fills every requirement. The two make a snappy combination.