

Royal Sedan \$1595  
J. & K. Detroit



# Drive the wonderful Chrysler '70' and appreciate its great reputation

We can recite to you the advantages of Chrysler '70's' speed of 70 miles plus, its astonishing pickup of 5 to 25 miles in 7/4 seconds.

We can tell you what its scientifically balanced 7-bearing crankshaft and impulse neutralizer contribute toward its greater smoothness; how much more comfortably you ride because of its low chassis design, its unique spring suspension and its shock absorbers; how much more easily it handles because of its pivotal steering gear; and how much safer you feel because of its four-wheel hydraulic brakes.

But the real way for you actually to discover these things for yourself is to learn them today in an

extended test over all sorts of roads, through all sorts of traffic, with you doing the driving.

We gladly accord you the opportunity for such a demonstration.

Royal Sedan \$1595; Brougham \$1525; Four-passenger Coupe \$1595; Two-passenger Convertible Coupe (with rumble seat) \$1745; Crown Sedan \$1795; Two-passenger Coupe (with rumble seat) \$1545; Two-passenger Roadster (with rumble seat) \$1495; Sport Phaeton \$1495; J. & K. Detroit, subject to current Federal excise tax.

Chrysler dealers are in position to extend the convenience of time-payments. Ask about Chrysler's attractive plan. All Chrysler cars have the additional protection against theft of the Fedco System of numbering.

## CHRYSLER '70'

H. L. CONNELLY MOTOR CO.

527 N. Jackson St. Roseburg, Oregon Phone 350.

DRIVE A CHRYSLER TO PROVE A CHRYSLER

SELL DEER ANTLERS transporting them to the coast for shipment to the south. The bone material is valuable for many articles of manufacture.

### New Engine!

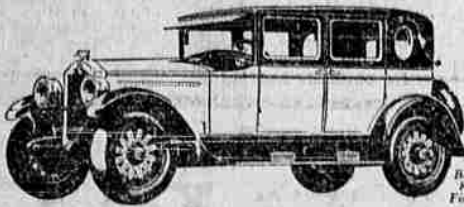
## GRAHAM BROTHERS TRUCKS

3/4 1 1 1/2 2-Ton

J. O. Newland & Son  
Roseburg, Oregon

# 344,679

### car owners say Buick will be their next car



A general and impartial survey of automobile owners recently conducted by a great organization, shows that 344,679 owners of other cars intend to change to Buick next time they buy a car.

These owners have compared their cars with Buick—in performance, in economy, in comfort, luxury and dependability. And they have decided that Buick offers greater value.

Examine a Buick at your earliest opportunity. Find out why so many owners of other cars are changing to Buick every day.

WHEN BETTER AUTOMOBILES ARE BUILT, BUICK WILL BUILD THEM



MOTOR SHOP GARAGE

DISTRIBUTORS FOR DOUGLAS COUNTY

PHONE 268

OAK AND ROSE STS

## BUICK PROVIDES TRAINING COURSE

With over 20,000,000 automobiles being operated within the United States, there is in the servicing of these cars one of the largest fields of opportunity for the young man of today. In the past years many have discussed the so-called "saturation point" of the automobile. Regardless of the interest the layman may take in this doubtful "saturation point" it surely presents no menacing problem for the man in automotive service. The number of cars that are being operated has steadily increased year by year since the automobile first made its appearance, presenting an ever-growing demand for service. The business of automotive service is expanding and, therefore, presents to the young man of today, who is mechanically inclined, an exceptional field of opportunity.

In addition, automobile manufacturers of today are spending great thought and energy upon the solution of the problem presented by the fact that the car owner is now buying his automobile upon merits of the product in performance and particularly upon the intelligence and efficiency displayed by the service organization in keeping that product in proper operating condition. In this connection, the importance of a well equipped, well-manned service organization to the car manufacturer cannot be over estimated. This importance attached by the automobile industry to the equipment and operation of their service organizations aides materially in still further increasing the opportunities afforded the young man who cares to train himself in this line of work.

For the past four years, the Buick Motor company has been sponsoring a full time course of training in Buick Authorized Service at Flint, Mich. the home of the Buick. This course extends over a period of three months, and thru it have passed students from every state in the Union and twenty foreign countries.

With a thought to provide training for these young men, the General Motors Institute of Technology now announces a new course in Buick Authorized Service conducted on the co-operative plan, i. e., the student, while taking the training, will spend part time in the Institute and part time in the shop in alternate four-week periods, extending over one year. The advantage of these working periods is two fold—first, it will give the student experience in the actual work on the various assemblies of the Buick under manufacturing conditions, thereby giving him confidence in his own knowledge of Buick construction, and secondly, it provides him with an earning power which will cover his school charges and aid him materially in defraying his living expenses during the course. This course extends over a period of one year; six months at the Institute and six months in the Buick factories.

Parabrase Motor Oil 100 per cent pure paraffine base. At General Independent Dealers.

## EXCELLENT ROADS OF LOWER UMPQUA LURE MOTORISTS

In about three hours easy driving from Roseburg, lies one of the most alluring districts in Douglas county, one that is seldom visited by motorists from this city.

This lower Umpqua valley is a picture that is more truly rural than almost any other in this section of the state. For sheer beauty, it is unsurpassed, and as a place to picnic it has most of the places within a day's run of the city outclassed.

Roseburg-Reedsport Road One of the main features of this valley of the Lower Umpqua is that it lies in the Shadow of the Coast Range, in the Canyon of the Umpqua with a sheltered location, along precipitous bluffs, where numerous small canyons, with deep foliage and fishing streams and lakes abound.

Those who live there ought in all reason be happy and they probably are. And traversing this valley for

### The Big Drive Still Going The High Standard of Quality is Always Maintained in

## Kelly Springfield TIRES

We Swap New Tires for Your Old Ones.

- Greasing, Oiling, Vulcanizing
- Fully Equipped Power Car Washing Machine.
- AUTOMATIC AIR MACHINE
- ELECTRIC SERVICE
- BATTERY, GENERATOR AND IGNITION
- NIGHT AND DAY SERVICE

## Rose Garage

PHONE 65

# OAKLAND

Announces the Appointment of

ROBERTS & McCULLOCH  
MOTOR CO.  
ROSEBURG GARAGE  
As Douglas County Dealer  
Roseburg, Oregon  
Phone 408

WE are pleased to announce the appointment of this new local dealer—a connection which admirably reflects the high standards Oakland has set for selling and servicing its motor cars.

A cordial invitation is extended to you to call on our new dealer and examine the Greater Oakland Six, the car that is everywhere winning and holding increasing good will.

See also its companion car, the New and Finer Pontiac Six—at New Low Prices—which in its first year more than doubled the best previous production record of any new make of car. And ask about the Pontiac Six De Luxe Delivery, the first low-priced six-cylinder complete delivery car in the world.

Finally, remember that this new Oakland-Pontiac dealer sells "Good Will" Used Cars—used cars that you can buy with full confidence that you will receive thoroughly dependable transportation.

OAKLAND MOTOR CAR COMPANY, PONTIAC, MICHIGAN

OAKLAND SIX \$1025 to \$1295  
PONTIAC SIX \$775 to \$975  
All Prices at Factory

# OAKLAND-PONTIAC PRODUCTS OF Sixes GENERAL MOTORS

its entire length, is one of the finest pieces of road engineering in the state, with scenery and loveliness that equals the famous Columbia River highway—and that covers a lot of territory. But as the saying goes: "Go and See It."

For a recent visit to this valley of the "Grand Canyon of the Umpqua" a Chrysler '60' sedan from the H. L. Connelly Motor company was used, and the trip was made in a single day—with plenty of time to spare. The road along the Lower Umpqua from Reedsport to Winchester Bay will soon be connected by the Roosevelt highway, thus making it possible to drive from Roseburg to our "Own Beach" and enjoy the day by the briny deep—a 96-mile drive—with scenery all the way.

Via Drain-Eikton-Scottsburg The drive was made on the Pacific highway to Drain, thence west over the Hancock Hill, with its touch of beauty and its canyons and high bluffs—to the valley proper at Eikton. From here to Scottsburg, the valley is divided by the Umpqua river, and there are broad fields in which sheep and cattle abound in great numbers. The Lower Umpqua is the dairy section proper of Douglas county. The moisture from the sea breezes furnishes all the green feed necessary to produce the highest grade of cream, butter and cheese. At Reedsport, a modern creamery, conducted by Mr. Stone, is one of the going institutions of the valley. They put up the "Mellow West" brand of cheese, which is a high quality product. The dairy section extends from Eikton to the beach—all along the smaller streams, up Smith river, the Loon Lake section, and along the main highway.

Scottsburg-Reedsport Road The road crosses the river at Scottsburg on a free ferry—and follows the south bank through the "Grand Canyon of the Umpqua," which is approximately 17 miles—as pretty a drive as can be found in any section of the Pacific Northwest. As wide as the pavement, level, just about 20 feet above the wide Umpqua, along the brink all the way, with canyons, and abrupt bluffs with waterfalls and tumbling cascades, which join the more ambitious river. There is shade, a deep shade, in many places and deep water where trout and salmon abound. It is in this canyon that are to be found many camping places so near perfection that they are almost irresistible. Here, too, are to be found many

ideal spots where a picnic for an afternoon may be enjoyed. As yet there are no "hot dog" stands, and the auto camp is quite unknown—no bill boards to hide the scenic beauty—the sylvan beauty of the canyon as well as the wide expanse of the Umpqua, dotted here and here and there with the launches, and fishing boats, and usual river traffic. And not a single filling station except in the towns mentioned. Here is all peace and quiet. The journey to and from Reedsport and Winchester Bay can be made by two routes. One via Drain and the other leaving the Pacific highway at the Country club sign going west through Garden Valley, the Little Canyon, Kellogg and Eikton, thus following the Umpqua most of the way from Roseburg, to the beach. "Our own Douglas County Beach." Try this drive next Sunday. It's scenic all the way from Roseburg—and the road is fine—3 hours and you can be in Reedsport.

Parabrase Motor Oil 100 per cent pure paraffine base. At General Independent Dealers.

## CANADA READY FOR BIG MOTOR INCOME

By NEA Service TORONTO, June 28.—Canada is prepared to reap the greatest revenue in history from tourist traffic coming from the United States this year.

Considering motor traffic alone, it is estimated that the Dominion has gathered in more than \$400,000,000 in the last three years. Last year the returns from motorists of the United States have been calculated at more than half the total for the three years.

This year, it is believed, the revenue will far exceed that of last year. Records show that more than 2,000,000 automobiles entered Canada in 1926 for touring purposes lasting more than one day. Officials believe this number will be doubled for 1927.

How good news does spread! General Gasoline is still the best

Sidney Adams of Oakland spent several hours Tuesday visiting friends and attending to business matters in this city.

Taxicabs that have been operated by Ohio State University where studied from 10,000 to 200,000 miles dents will try to find out what will go into the laboratory of the makes them wear down.

Our tires stand up—the best is none too good these days.

## Miller Tires

"MILLER KNOWS RUBBER"



Roseburg Super-Service Station  
C. D. FIES

## USED CARS ROY CATCHING MOTOR CO.

Ford, 1926 Truck, Cost \$800 new	\$425
Gardner, 1922 Touring, fine looking	\$275
Chevrolet, 1924 Sedan, Refinished in Duco	\$325
Studebaker, 1920, Special Touring, Reduced	\$175
Ford, 1924 Touring	\$150
Ford, 1921 Touring	\$ 50
Ford, 1922 Touring	\$100
Ford, 1925 Coupe	\$275
Oakland, Touring	\$100
Chalmers, Touring	\$100
Nash, Touring	\$100
Hudson, Touring	\$100

125 N. Rose Phone 438 Roseburg, Ore.