

Rugged Power in a smooth stream

The outstanding characteristic of the Essex Super-Six is complete absence of labor in all performance.

Whether spurting at top speed or doing a comfortable 50 miles an hour all day long, you can realize its super ability only by the way you distance others.

This smoothness means economy—economy of effort, economy of power, economy in the long life of all moving parts.

And in making long tours or using your Essex all day in city traffic, you will find the greater economy of physical freshness that comes from easy driving, riding, steering and control, and its freedom from vibration at all speeds.

ESSEX Super-Six



The New Sedan DeLuxe \$895

This is the finest, roomiest and most beautiful Essex ever built. Naturally it has every refinement and detail of comfort that you could desire.

Other Essex Models

2-passenger Speedabout \$700
Coupe \$735 Coach \$735
4-passenger Speedster \$785
Sedan \$795
All prices f. o. b. Detroit, plus war excise tax.



The Essex starter is on the instrument board. It is simple, quick and positive, and is especially convenient in starting on hills.

{ Riding is like flying }

ROY CATCHING MOTOR CO.

125 N. ROSE PHONE 438 ROSEBURG, ORE.

CAMPING SEASON OPENING UP FINE

These first few warm days of spring inspire one big impulse—that of a car loaded with camping equipment, the green hills, a perfect highway and nothing to do but travel and return to your leisure.

And that is just what hundreds of motorists all over the country are doing right now, or are planning to do in the very near future. There are more camping spots now than ever before, for nearly every grove of trees harbors a camping ground, and there are places all along the way fitted to supply the demands of the most fastidious.

Naturally this brings one right to the heart of the matter, namely, camping equipment. This is of interest to practically everyone who goes on a motor and there is no time like the present for looking over the camping equipment stored away in the garage, and add to it the things that you need on the last trip.

The Western Auto Supply Company has known of this for a long time at low prices at Powell's.

time and they are prepared for the influx of camping interested persons who visit their stores seeking the new in camping equipment. The camp goods department at the local store tells one that they have overlooked nothing that will add to the comfort and convenience on the trip.

Despite the fact that many campers have equipment that is as serviceable as it was the day it was purchased, there is always something new that one wants to add to it. A new stove, additional camping dishes, a new tent, and the like are naturally desired.

Sewing machines for rent at Powell's Furniture store.

LA VERNE HAWN TO RECEIVE COMMISSION IN RESERVE

OREGON AGRICULTURAL COLLEGE, Corvallis, June 7, (Special)—A. L. Hawn, of Roseburg has completed his four years of military training at O. A. C. and will be commissioned in the reserve corps of the United States army. The commission will be awarded to 73 senior men who have finished the prescribed training regulations by the war department for the cadets of the Reserve Officers Training Corps.

Used refrigerator for \$8.00. New one at low prices at Powell's.

UNIVERSAL JOINT VITAL PART OF CAR

There are few vital parts of a car which are subjected to so many elements that tend to lessen its efficiency and possibly no unit that is more neglected than the universal joint, the perhaps the most inconveniently accessible position, a general misunderstanding of its vital functions, and the service demanded of same. The metallic type should have careful attention, both as to inspection and lubrication. The general practice is to recommend lubrication and inspection every week or every thousand miles. In some cases semi-fluid grease is recommended while in others oil is used. About two-thirds full is the proper quantity to apply for any in excess of this is thrown out due to the action of the joints. The centrifugal force actuated by the spinning unit has a tendency to throw the lubricant away from the bearing surfaces and through the recess in the cover. Every five thousand miles drain the lubricant, force a little kerosene into the housing with an oil gun to wash out the old lubricant. Use only the best quality of lubricants, and when grease is used, a little oil should first be introduced as this has a tendency to establish lubrication so that when the grease thins down it will find its way into the bearings.—Automobile Digest.

Visit our complete toy department. Let the kiddies have a few new toys to keep them busy. You can always find a big line of all kinds of toys, dolls, games, etc., at Carr's.

DRILLING LARGE HOLES IN METAL

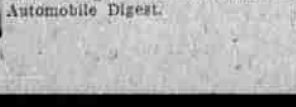
When drilling large holes in sheet metal, the common practice is to scribe a circle of the required diameter, and then, after drilling a series of holes in the circumference, the metal between is broken away. This not only consumes a lot of time, but frequently gives unsatisfactory results. A much better method is to use a reamer. This reamer can easily be made by the average car owner. A piece of round steel is filed to a taper and is then cut away on one side to slightly past the center. In use, a small hole is first drilled and then enlarged with the reamer.—Automobile Digest.

TOYS AT CARR'S

Visit our complete toy department. Let the kiddies have a few new toys to keep them busy. You can always find a big line of all kinds of toys, dolls, games, etc., at Carr's.

HARRISON'S GARAGE

Phone 447
136 South Stephens Street,
Roseburg, Oregon



WHIPPET 6 SPEEDS BETTER THAN MILE MINUTE ON TRACK

In one of the most spectacular trials ever staged in the east, a Whippet Six roadster recently set a high mark when it maintained a speed of better than a mile a minute over a 23-mile course. The test was staged on the board automobile race track operated by the Atlantic City Motor Speedway.

William G. Braddon, of Audubon N. J., piloted the Whippet six during the thrilling 23-mile test which was made under the most adverse weather conditions. The car Braddon drove in the test was a strictly stock model, the first stock automobile ever driven on the world's longest board race track. As the Whippet was started off on the first lap, conditions were fair but after a few minutes a heavy mist began to fall and shortly thereafter the board track became slippery making the going extremely hazardous, especially at the high rate of speed maintained. Because of this perilous condition of the track Braddon slackened the pace of the Whippet Six during the remainder of the test.

At the end of the 23 miles the Whippet Six glided up to the finish line and the stop watches showed that the car traveled the 23 miles in 22 minutes. Braddon declared that had the track remained dry for the entire length of the test the speed average of the Whippet would have been much better than the mark set.

Despite the high rate of speed the Whippet Six motor at the end of the test was cool and declared to be capable of continuing indefinitely at the same speed without showing any ill effects.

Beautiful picture with plate glass mirror only \$1.00. These are \$2.00 values. See them at Powell's.

How's She Hittin'?

BY ISRAEL KLEIN
Science Editor, NEA Service
The most elusive trouble-maker for the innocent motorist is that confined in the electrical apparatus.

The car suddenly refuses to budge. The engine won't turn over. There isn't a puff of a cylinder.

Most likely the cause lies in the electrical system. But where to locate the trouble is the problem. Perhaps it's only in the switch. Perhaps it's only a faulty distributor. Sometimes the fault is more mysterious and unyielding to the efforts of the amateur electrician at the wheel.

D. P. Cartwright, electrical engineer, pointed out five classes of electrical road failures, when he spoke recently at the annual meeting of the Society of Automotive Engineers. They are:

1. Failure from reasonable wear.
2. Failure due to maintenance neglect.
3. Failure to install first-class apparatus.
4. Faulty design, materials and workmanship.
5. Failures due to climatic conditions.

Electrical apparatus wears mechanically and electrically. Cartwright points out. The bearings, brushes and commutators wear down with use. Corrosion, moisture and oil reduce resistance of the dielectric or insulator around the wires, and short circuits result.

The heat of the engine causes expansion of the wires, and contraction results when the engine cools. Armature windings are especially subject to these changes. These forms of wear can't be detected by ordinary search. They require application of special apparatus. A responsible garage



Get your Tires off your mind

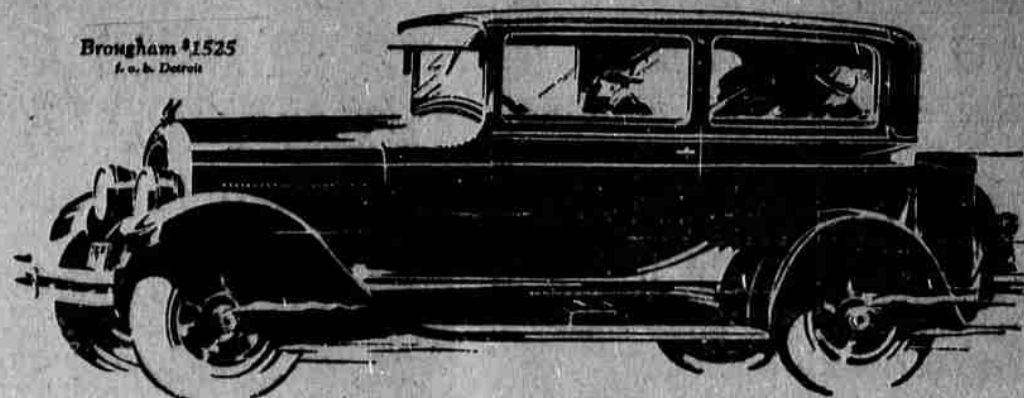
It's a wonderful relief to get rid of those tires you've nursed through the winter and roll out in the spring sunshine with a brand new set of Silvertowns.

We'll make the change as painless as possible by lower prices based on volume buying.

Harrison's Garage
Phone 447
136 South Stephens Street,
Roseburg, Oregon



Brougham #1525
f. o. b. Detroit



Drive the "70"

and you'll truly appreciate "70" Leadership

ONCE you have thrilled to the Chrysler "70's" responsiveness which neverfailingly swishes you into the lead—

Once you have enjoyed its lithe ease and smoothness that makes seventy on the speedometer seem as effortless as thirty-five—

Once you have felt its instant obedience to your slightest touch on the steering wheel, its relaxing comfort, and the assurance of its hydraulic four-wheel brakes—

You'll understand why the sweeping public preference for the "70" has made every other motor car builder in its price field strive to equal the marvelous performance which has built Chrysler's great reputation.

Allow us to place a "70" at your disposal for a real demonstration—you to select the route and to drive, if you wish, in the way you are accustomed to drive.

CHRYSLER "70"

BUILT AS ONLY CHRYSLER BUILDS

H. L. CONNELLY MOTOR CO.

627 N. Jackson St. Roseburg, Oregon Phone 360

CHRYSLER MODEL NUMBERS MEAN MILES PER HOUR

electrician must be consulted.

Maintenance neglect may be due to lack of lubrication in the generator or ignition unit.

The battery, however, is most often neglected. Let the owner keep this part clean and watered and he will find little trouble due to maintenance, at least on his part.

The faults of the manufacturer in installing units of insufficient capacity are not in the owner's category. That bespeaks the car and its reputation.

Climatic conditions can't be foreseen. These, however, cause more trouble with the battery than with other parts of the electrical system, and therefore can be more easily corrected.

Battery trouble has been taken up before, in this series, and need not be recalled. There's only one injunction: See that the battery is well charged, but never overcharged, that it is clean and filled with pure water regularly, and there will be practically no trouble from this source.

an ice compartment, keeping the water cold.

Umpqua camp enjoys an all-year patronage and the owners are to be commended for their enterprise in maintaining such an attractive place.

FOR TRAFFIC BOARD

I. J. Renter, automobile manufacturer of Lansing, Mich., proposes the formation of a national traffic commission, with one representative from each state. Its purpose would be to draft a national code covering traffic rules, signs, signals and driving practice.

TUBE HAS OWN COPS

A special police force of 300 men is being trained to conduct traffic in the new vehicular tunnels under the Hudson river, in New York. The tubes are expected to be opened for traffic about the first of September.

AUTOS TO VIOLINS

Freeland O. Stanley, maker of the Stanley Steamer, is now engrossed in his hobby of making violins. He is 78 years old and is confined to his estate in Newton, Mass.

EX-CALIFORNIANS TO ERECT NEW SERVICE STATION

Charles Church and Glenn Ehle, progressive men from the booster state of California, have transferred their enthusiasm to Oregon and have purchased 30 acres of land on the highway and Umpqua river just below the steel bridge north of Canyonville.

Work has just been started on the service station which promises to be one of the most elaborate buildings of its kind along the highway. The building will be more like a bungalow, with large windows. One side will be devoted to the service station and the other to repair work, with comfortable living quarters in the rear. Messrs. Church and Ehle plan to build their cabins on a more extensive scale than is often seen, having two or three rooms, screened and glass porches and fireplaces. Their plans for next season include canoes on the river, a boat, and children's playgrounds. Work has just started, but with the culmination of the projected plans, a beautiful camp will be made, the location being ideal, on the river and with plenty of shade. Both Mr. Church and Mr. Ehle are live-wires and believe Douglas county offers the best opportunities for tourists and travelers in general.

Heavy real leather sandals for children. Sizes 6 to 2 at \$1.40 to \$1.55. Made to wear yet look well and are cool. See the line at Carr's.

LEATHER SANDALS

Heavy real leather sandals for children. Sizes 6 to 2 at \$1.40 to \$1.55. Made to wear yet look well and are cool. See the line at Carr's.

NEW STEAM CAR

A new type of steam car is being produced for experimentation in Detroit, with the purpose of introducing it soon to motorists. Several stockholders of a former steam car are said to be interested in this one.

Oilcans, 5-gallon, galvanized, special this week, \$1.00 at Powell's.

A HARD JOB

It's about as much of a job for a society climber to penetrate the "400" as it is for a Used Car to get access to our display floor. The car MUST HAVE THE GOODS.

J. O. NEWLAND & SON
Roseburg, Oregon.

A USED CAR IS ONLY AS DEPENDABLE AS THE DEALER WHO SELLS IT

Whippet Six Shows Speed

William Bradden (inset), of Audubon, N. J., in a test recently staged on the Atlantic City Speedway, drove a Whippet Six Roadster 23 miles in 22 minutes. This photo shows the Whippet Six as it sped over the track at a speed of better than a mile a minute. Bradden said he could have established a better mark had it not been for the heavy mist which wet the board track and forced him to slacken speed as a matter of precaution.



AUTO CAMP NEAR MYRTLE CREEK HAS IMPROVEMENTS

One of the prettiest camps in the county is Lompqua camp, located on the curve of the road by the river, six miles below Myrtle Creek. The owners, G. A. and J. W. Fitzpatrick, built the camp three years ago, and have enjoyed a fine patronage.

There are 26 acres, with a half-mile frontage. Seven cabins of one, two and three rooms are maintained and more cabins are to be constructed.

As special features, three rooms and a deer prove attractive. Showers, laundry facilities and a swimming pool provides comforts for travelers.

Gas ranges supplied from a carbide plant supplies cooking facilities in the cabins, and electric lights from their own plant illuminate the grounds. A second light plant is now being installed to care for further power needs. To Mrs. Fitzpatrick is due the credit for the many old-fashioned flowers which surround the store and repair shops and a new innovation is a large public fountain, built of cobblestones, that contains