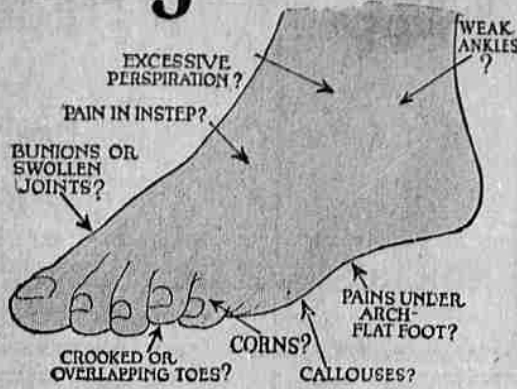


Do You Suffer from Painful Feet?



Foot Comfort Expert from Chicago will be here
Saturday, April 16
 To Give Free Demonstration

On the above date we will have at our store, through the courtesy of Dr. Wm. M. Scholl, famous foot authority, a Foot Comfort Expert from his own staff, sent here for the benefit of our patrons. We urge every foot sufferer to make the most of this unusual opportunity.

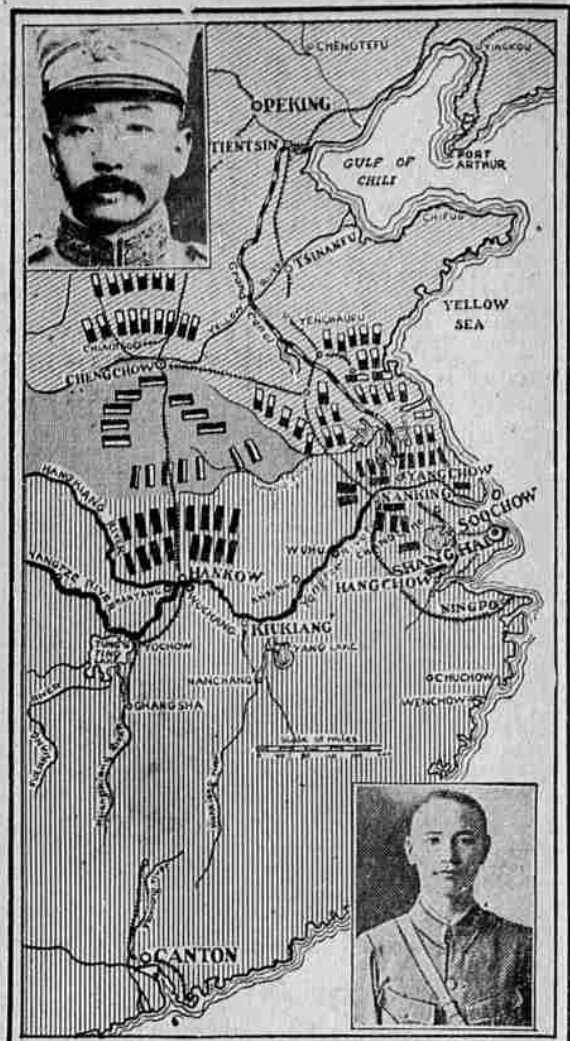
Over your stockinged feet, this Expert will make Pedo-graph prints, which will show the exact nature of your foot ailment. He will then demonstrate how the scientific method and improved appliances perfected by Dr. Scholl instantly relieve your painful feet, and restore them to health and comfort. Absolutely no charge for this service. Be sure and remember the above date so as not to miss this opportunity.

TO PHYSICIANS—You are invited to refer or bring your foot-troubled patients to our store during this demonstration. The latest improved appliances and method of Wm. M. Scholl, M. D., for relieving and correcting painful feet will be fully explained.

56 STORES
ROSEBURG C.J. Breier Co OREGON
 IN THE WEST

ON TO PEKING

Map Shows Future War Area in China and How Victorious Nationalists Have Marched Northward from Canton



Sweeping northward toward Peking, the Nationalist armies in China have fought with little resistance thus far. Northern armies have retreated before the victorious march of Chang Kai-shek's Cantonese. The map shows the present positions of the fighting forces in China and gives a relative idea of how far the southern troops have progressed, with Canton the general starting point. Above is Chang Tso-lin, Manchurian war lord, in command of the Pekingese troops that have been retreating. Below is Gen. Chang Kai-shek, marshal of the southern armies. The armies between the northern and southern forces are pro-Cantonese, and not expected to stand in the way of the Nationalist advance.

State Press Comment

The great crime in this state, as in all other states, is that property taxes are not equal. If the new assessment law is strictly enforced, assessments will be equal, or very nearly so, for one requirement is an affidavit giving the inventory or invoice value of machinery and stocks of merchandise. Those whom the income taxers wish to hit are to a large extent those with manufacturing plants and stocks of merchandise. The assessed valuations of the state is now slightly over a billion dollars. The Sentinel makes the prediction that a fair assessment of personal and real property will put that assessment at three to five billions of dollars, most of the increase to be on personal property. And largely a taxpayer will make any complaint if he feels certain that every other taxpayer of the state is getting the same treatment.

In the past it has been a contest on the part of one taxpayer to keep his assessment down to the same proportion as the assessment of the property of his neighbor or competitor. The taxpayer who has been honest in listing his property has been severely penalized, that has been the whole trouble.

If the new assessment law is fairly administered, no honest property owner will have any reason to feel that he has been injured, even though the assessment on his personal property should be boosted four or five times, but if the new law is enforced in some counties and not in others, it will be the most unfair taxation law ever enacted.—Cottage Grove Sentinel.

LEEDS, England—A certain wife was worth 60 cents to her husband in the opinion of Lord Chief Justice Hewart. The husband sought \$1,000 for alienation.

Budweiser Real Hop Malt Syrup



You can cross disappointment out of your malt dictionary forever once you get acquainted with Budweiser Real Hop Malt Syrup. Just think what goes into it!

- choicest Saazer and American hops!
- the pick of American barleys!
- skillful blending by America's foremost maltsters!
- the experience of 70 years of knowing how!

Get a can of Budweiser Real Hop Malt Syrup and try it. And let your own good judgment decide.

ANHEUSER-BUSCH, ST. LOUIS
 ROSEBURG SODA WORKS
 Local Distributors
BLUMAUER & HOCH CO.
 General Distributors
 Roseburg, Ore.
 Portland, Ore.

SOVIET UNIONS SPLIT FORCES OF CANTONESE

(Continued from page 1)

Chang Chung-Li, Cantonese commander in that district, was fleeing toward Shanghai.

Foreign observers here believe the northerners have determined to strike while the iron is hot. In view of the split between the moderate Cantonese faction headed by Chiang and the radical section represented by the red labor unions and reflecting the policies of the Cantonese extremists at Hankow.

Italians Repulse Mob
 Early today a group of Chinese tried to rush the international settlement barrier and a clash followed with the Italian guards on the Unga road. The Italians fired over the heads of the Chinese and they retreated. Last night a small mob made a sally to storm the barrier, but it was soon realized that this was impossible. The Chinese then set fire to circulars which they had thrown into the barbed wire barrier and several posts were burned.

The strike was due to General Chiang Kai-shek's efforts to suppress the radical element of the Kuomintang, or Cantonese political organization.

The labor unions ordered the workers to leave their posts as a protest against General Chiang's action in ordering raids yesterday on Labor Union hall. Labor leaders said the call was heeded immediately by 50,000 workers, and they expected many others would join the movement.

Gen. Chang Real Target
 It was made clear by the labor organizations that the strike was not aimed at foreigners, but was purely intra-Kuomintang—a movement by the communists to bring about the overthrow of General Chiang, commander in chief of the Cantonese armies. Chiang's move against the labor unions was looked upon as definite confirmation of an irrevocable decision not to become reconciled with the civil and radical wing of the Kuomintang, having its headquarters at Hankow.

The strike was only partly effective today in the international settlement. The tramways were running on restricted schedules, the workers had gone out in some mills and tobacco factories, but the rickshaws and omnibus service was normal.

Northerners Continue Drive
 The Northern Chinese troops, who turned suddenly several days ago against the Cantonese, appeared today to be following up their successes. An official report was received that they had entered Pukow on the northern bank of the Yangtze river, opposite Nanking, marching into the city in the wake of a bombardment and without encountering opposition from the Cantonese. The report said that Cantonese flags on the side of Nanking facing Pukow had disappeared.

Further east in the Yangtze valley, Sun Chung-fang, original defender of Shanghai, assembled his troops in a drive on the Grand canal, reaching a point opposite Chinkiang.

Blame on Soviet
 Northern authorities in Peking, in an official account of the last week's raid on Soviet buildings in the Peking embassy compound, announced that among the documents seized were detailed plans for military operations; the Soviet government to supply and organize cavalry in Mongolia and Manchuria.

The American consulate general in Shanghai made public a statement signed by 17 American missionaries, who were residents of Nanking at the time of the outrages there.

"It now seems the all-established opinion both of Chinese and foreigners that those responsible for these outrages were of the communist wing of the nationalist government, which is dominated and directed by Russian Bolshevik advisers," the statement says.

Try a used car at our risk. The Hansen Chevrolet Co. offers to let you try a used car for 3 days and if not satisfied, you can apply the money you paid on another used car or a new Chevrolet, any model you wish. Hansen Chevrolet Co.

JURY INDICTS THEN GOES TO BASEBALL OPENER
 (Associated Press Leased Wire.)
 PORTLAND, Ore., April 12.—Because members of the federal grand jury wanted to attend the opening baseball game this afternoon, Federal Judge John E. McNary waited in his office an extra 45 minutes this noon to receive its report, instead of forcing the jury to return to report at 2 p. m., as had been planned.

Among indictments returned was one charging Ralph R. Wertz, of Medford, with violation of the Mann act. It was charged that he transported Marie Coleman from Ashland to California and return.

A not true bill was returned in the case of Ernest Johnley, Indian, from the Umatilla reservation, who had been charged with assault with intent to kill his wife.

Our alfalfa seed is grown on non-irrigated land, and will develop good root systems. Wharton Bros.

Cottage cheese. Roseburg Dairy. Phone 186.

BRUSSELS SEED FOR SALE
 1926 crop early St. Valentine and late \$10 per pound; \$1 per ounce—10 lbs. or more at \$8 per pound. Anyone wanting seed for fall broccoli maturing now, please let me have your orders now at \$12 per pound. Fred Schmidt, Dillard, Ore. Phone 4675. All tested seed sold out.

CHIEFS PRESENT GOOD PROGRAM AT FORUM LUNCHEON

A snappy and interesting program was given by the Umpqua Chiefs in connection with the forum luncheon held at the Umpqua Hotel today. There were several selections by the Kiwanis club orchestra and a good deal of group singing. An interesting stunt was a series of dialogues in which the speakers discussed mythical purchases of out of town goods. Tom Ness, head of the Umpqua Chiefs made a brief talk explaining the organization and aims of the booster club and stressing the program now being undertaken in preparing for the strawberry carnival. The main address was made by A. C. Marsters who stressed the importance of supporting home interests. The greatest thing that can come to Roseburg is the building up of a spirit to support Douglas County interests to the exclusion of all others. Mr. Marsters declared in the conclusion of his address.

Garden seeds in bulk and packages at Wharton Bros.

MAN WANTED IN PORTLAND FOR AUTO THEFT HELD

W. T. McKim, wanted in Portland for larceny of an automobile, was arrested in Roseburg yesterday evening by Chief of Police Wm. Vaughn. The man was driving an Oldsmobile touring car and was accompanied by his wife and three children. The license plates had been removed and plates taken from a Ford car substituted. The officer, however, recognized the car from the description given by the Portland police and took the man into custody. Ed. Gloss, constable of Multnomah county, came to Roseburg today and took the family and the car back to Portland.

A Perfection brooder stove will take care of 650 chicks at a very low cost. See them at Wharton Bros.

LOCAL WOMAN DIES AT CHICO

Mrs. A. S. Newman of this city died this morning at Chico, California, following a protracted illness, according to word received by her son, Laverne Newman. Mrs. Newman had been in ill health for the past few months and accompanied by Mr. Newman and three of their children went to Chico last November in hopes that the change in climate would benefit her condition.

WHEAT WINTERS WELL IN OREGON

PORTLAND, Ore., April 13.—The weekly Oregon crop report of the weather bureau issued today says: Wheat wintered well except in a few western localities where some loss resulted from freezing and excessive moisture. Wheat is well advanced in most localities, but during the week growth was slow. Warmer weather is needed. Seeding of spring grain was delayed by wet weather and snow. Some early sown spring grain is up.

"The cold weather of the winter caused some injury to peach and apricot buds in eastern counties and to loganberries in western localities. Fruit bloom is backward but some local damage may have been done by the frosts of the week. Pears in the Rogue River valley are in the pink stage. Spraying has been delayed by unfavorable weather.

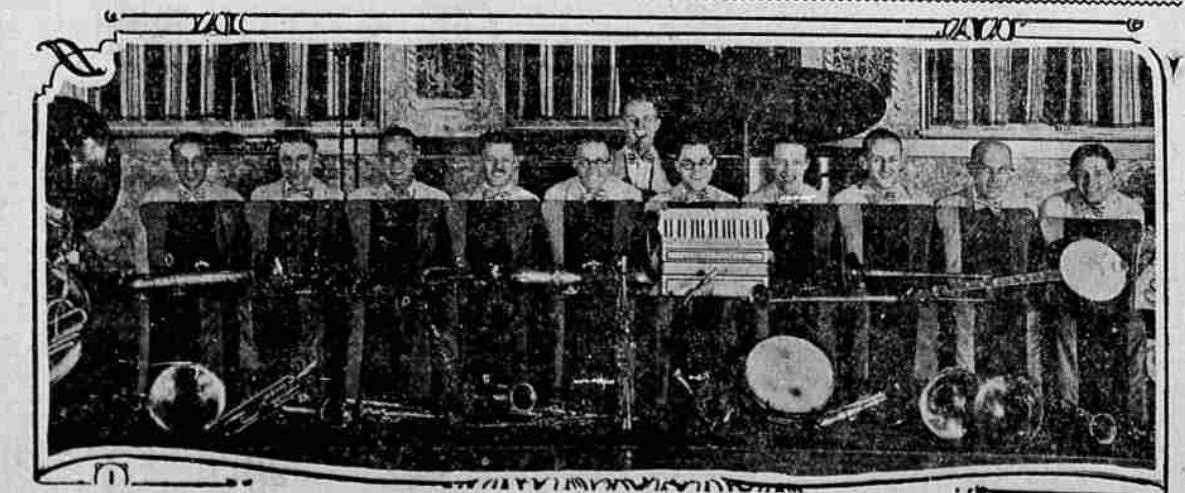
"Most stock wintered well, but a few correspondents report stock thin. Much feeding has been done and feeding continues in many places. A good crop of lambs is being dropped, but there is some complaint that ewes are short of milk.

SENATOR FESS REFUSES ELECTION INQUIRY JOB

(Associated Press Leased Wire.)
 WASHINGTON, April 12.—Senator Fess, republican, Ohio, today declined to accept appointment as a member of the Reed campaign funds investigating committee to succeed Senator Goff, republican, West Virginia, who resigned.

In declining Senator Fess said he believed that investigations of elections should be conducted by the regularly constituted standing committee of the senate and that he was not in accord with the views of a majority of the special committee.

Cole McElroy's Spanish Ballroom Dance Band Will Play at Roseburg Armory, Saturday, April 16



Dance and music lovers will enjoy a real treat on Saturday night when Cole McElroy's popular dance band from Portland appears at the Roseburg Armory. This band, consisting of some of the best known musicians of the Northwest, has for a long time been a favorite with radio listeners, who have heard the frequent concerts over K. G. W. The band holds an exclusive recording contract with the Columbia Phonograph company, and the records made by this musical organization are meeting with a record sale. The band is composed of 12 musicians and features Johnny Sylvester, the "accordion man."