

# Tent Show Coming

Every lady over 14 years of age will be admitted FREE to see the play

## "THE VULTURE"

At Jennings' Air Dome Tent Theatre

Next Monday Night, July 5th

Located in North Roseburg, opposite the Auto Park  
General Admission is 10c for Children and 35c for Adults

A complete change of Plays and Vaudeville every night  
Doors open at 7:30, show starts at 8:15

Guaranteed to be the Coolest Place in Town

### MOVIE NOTES

**Liberty Theatre.**  
Every American inherits to stories of the West of fifty years ago—that period of history when Custer met Sitting Bull at the Little Big Horn and fought his last brave battle! A story of those stirring days is told by Harry Carey in "The Frontier Trail," his newest Pathé Picture at the Liberty Theatre today.

When Peary reached the North Pole in 1909, after 23 years of effort, it took five months to get the news to New York. When Lieut. Com. Byrd, U. S. N., flew to the Pole and returned in 15 hours, the story appeared in the great newspapers of the country the following day. Forced to keep down his supplies to a mere pittance of food and clothing, Peary had no opportunity to bring back with him a film story that posterity would treasure. On the other hand, there were these Pathé News cameramen at Byrd's base at Spitzbergen, when he embarked and he carried with him a motion picture camera whose unerring eye tells the complete story of the epochal flight a million times truer than it could be described in writing.

Now the Pathe film production, titled, "With Lieut. Com. Byrd, U. S. N., in America's Polar Triangle," has been given to posterity, to live on the screen and thrill mankind for decades to come.

The Liberty Theatre has the honor to present to its patrons this week this Pathe picture, presenting the crowning achievement in aeronautics on Sunday, Monday and Tuesday.

**Antlers Theatre.**  
Thomas Mitchell, who comes to the screen at the Antlers Theatre on Sunday, as a New York traffic cop on a holiday in Ireland in the Paramount picture, "Irish Luck," directed by Victor Heerman, is supported by one of the finest girls ever to appear opposite the popular star.

Lola Wilson, who made the 7,500 mile trip from Hollywood to Kiharney, Ireland, where most of the scenes for the production were taken, is featured in the leading woman's role in the film, a screen version of Norman Vener's Saturday Evening Post story. "An

**Imperfect Imposter.**  
Claude King, who appeared with Corinne Griffith in "Six Days" and with Milton Sills in "The Making of O'Malley," also has an important role.

**Majestic Theatre.**  
Who was the greatest rider in American history? Bob Irvine, cowboy star in "The Riding Fool," coming to the Majestic Theatre, Sunday and Monday, says there were several "riding" roles of great importance to our national life, namely: Paul Hensley, Sherman, Roosevelt and Ted Sisson, adding that early European history furnished Attila, the Hun; literature the "headless horseman" and the "four horsemen" and contemporary life—the Prince of Wales.

How much would it increase the value of your town lot in Sutherland if a large saw mill were built in Sutherland Valley?

#### COUPLE MARRIED HERE THIS MORNING

A very pretty wedding took place this morning at 7:30 o'clock at the Methodist parsonage when Rev. Joseph Knotts united in the holy bonds of matrimony Mr. Charles S. Farmer and Miss Eva J. Pemberton, the ring ceremony being used.

The young couple left immediately for a honeymoon trip to Crater Lake. They will make their home in Bridge where Mr. Farmer is engaged in the lumbering business.

Is it unlikely that a furniture factory should follow a big saw mill? Watch Sutherland Valley.

#### NOTICE TO THE PUBLIC

In justice to the public and to myself and associates, who are drilling for oil or gas near Sutherland, I beg to say to all that neither myself nor my associates have any connection with any campaign for the selling of Sutherland real estate. We have no interest in any such campaign or in the property advertised or in the proposals of sale, and know nothing about the movement until we saw the printed advertisements.

Dated July 2, 1926.  
W. C. CURRIER.

### Democracy Shaped by Forest and Frontier?

The appeal of the undiscovered is strong in America. For three centuries the fundamental process in its history was the westward movement, the discovery and occupation of the vast free spaces of the continent. We are the first generation of Americans who can look back upon that era as a historic movement now coming to its end. Other generations have been so much a part of it that they could hardly comprehend its significance. To them it seemed inevitable. The free land and the natural resources seemed practically inexhaustible. Nor were they aware of the fact that their most fundamental traits, their institutions, even their ideals were shaped by this interaction between the wilderness and themselves.

American democracy was born of no theorist's dream; it was not carried in the Sarah Constant to Virginia, nor in the Mayflower to Plymouth. It came out of the American forest, and it gained new strength each time it touched a new frontier. Not the Constitution, but free land and an abundance of natural resources open to a fit people, made the Democratic type of society in America for three centuries while it occupied its empire.—Fredrick Jackson Turner in "The Frontier in American History."

### Research Has Shown Body's Danger Point

Which is the weakest external part of the human body? Some people would say the solar plexus; others, the region of the heart. Scientists are inquiring into this ill-known subject, and already some important conclusions have been reached.

It has been found that the Adam's apple is man's most vulnerable external part. A slight blow is likely to affect it so seriously that permanent injury may result, the victim's breathing and swallowing being impaired. Even pressure of a thumb at this point can have injurious results. A hard blow may cause death.

One of the chief discoveries made in the course of this particular research is that the Japanese art of Jiu-Jitsu is based on expert knowledge of these danger points. For example, a blow with the edge of the hand above the temples or the ears may fracture the skull or cause concussion of the brain. Sudden pressure behind the ears is temporarily crippling in its effect. Blows on the nape of the neck are dangerous. Other points especially sensitive to pain and injury are the upper lip and the abdomen.

#### The Only Way

"On private business," said Charles to the office boy, as he handed in his card.

With a quaking heart Charles was ushered into the office of the successful man. Desperately he commented on the weather and other matters; then, realizing that his visit must soon draw to a close, he blurted out his business.

"Want to marry my daughter?" echoed the other, in amazement.

"Yes," answered Charles, sweat-dropping a lump in his throat.

"But, my dear fellow, do you realize what it means? My daughter is accustomed to have whatever she wishes so far as money can procure it. You'd never support her."

Charles looked blank and fingered the knob of his cane agitatedly.

"Couldn't he be gulped—" couldn't we chin in together?"

**Their Conversation**  
Horace called on Estelle. They spent an enjoyable evening in intellectual conversation.

They did not talk of the achievements in science, of the policies needed to solve the world's problems, of books, of travel, of art. They talked none of these things. They talked of Horace.—College Fun.

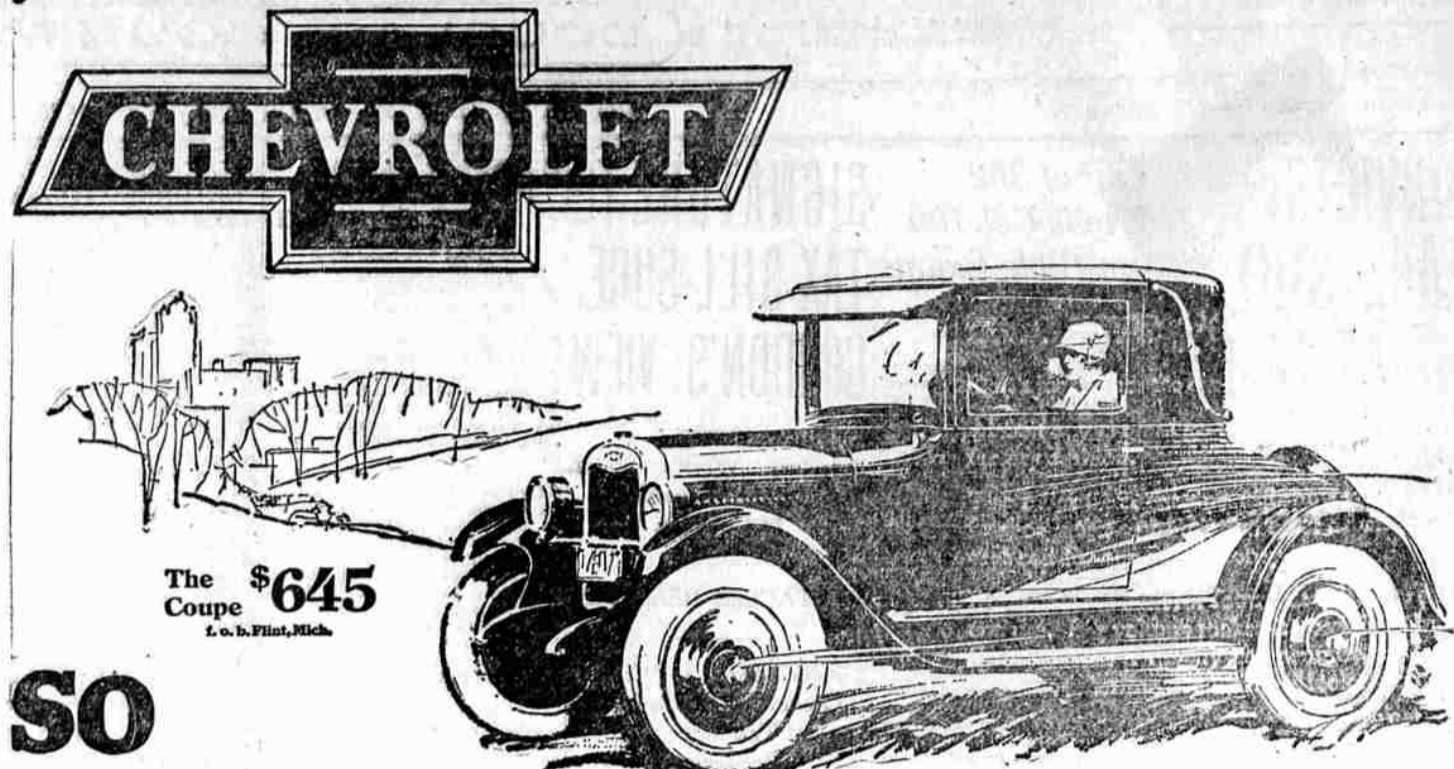
#### Wrong Meaning

Mr. Newswold had come home in very good spirits after a prosperous day in the city.

"My love is like a red, red rose," he said, as he kissed his wife.

"Berrie," said Mrs. Newswold, tearfully, "don't be unkind! You'd be like a red, red rose, if you'd been bending over the frying-pan for twenty minutes."

## for Economical Transportation



# Dependable

- Touring or Roadster \$510
- Coach or Coupe \$645
- Four Door Sedan \$735
- Landau \$765
- 1/2-Ton Truck \$395 (Chassis Only)
- 1-Ton Truck \$550 (Chassis Only)

Small Down Payment Convenient Terms All Prices f. o. b. Flint, Michigan

## HANSEN CHEVROLET CO.

Phone 446 Rose Street Roseburg, Ore.

# QUALITY AT LOW COST

## DANCE

IDLEYLD PARK  
Saturday Nite, July 3rd  
GOOD SNAPPY MUSIC  
Also  
Dancing July 5th, Afternoon and Evening  
CABINS FOR RENT

### SEND YOUR BOY

He'll bring home the same choice groceries that you would select yourself. Or if you prefer, we are always glad to deliver.

**Economy Grocery**  
O. L. JOHNSON  
"The store that serves you best"  
344 N. Jackson St. Phone 63

It's unreasonable to expect a good nickel cigar when you are selling at present prices. And when cotton brings a figure the growers like, you shouldn't look for low prices on all-wool-clothing, olive oil or silk stockings. But regardless of market conditions, you can always expect a REAL buy in a GOOD used car here. And you can always get it.

**HANSEN CHEVROLET CO**  
ROSEBURG, OREGON

## COMBINED

The Grand Barber Shop and Beauty Parlor WITH THE Radio Barber Shop TO BE KNOWN AS THE Elite Barber Shop and Beauty Parlor WHICH WILL BE Roseburg's largest and best equipped barber shop and beauty parlor, located at 130 Cass Street Corner of Rose

PERSONNEL OF BARBERS  
1—Glenn Callen  
2—Ray Shupe  
3—Lee McRoberts  
4—M. V. Endicott  
5—C. W. McAllister

BEAUTICIANS  
Miss Velma Goff  
Miss Eldress Judd

Open for Business, Tuesday, July 6, 1926

### WIDE HUNT FOR C. M. GAZLEY IS PUT IN MOTION

(Continued from page 1)  
ed there with the intention of carrying off the younger child, and while lurking near the house saw his wife come outside and entered her car.

### MARKET RATINGS

(Associated Press Leasehold Wire)  
PORTLAND, Ore., July 3.—Receipts eggs 1c lower; current receipts 25c; fresh medium 22c; fresh standard firsts 25c; fresh

standard extras 26c.  
Butter steady; extra cubes city 27c; standard 26c; prime firsts 25c; firsts 24c; prints 11c; extras 12c.

Milk steady; best churning cream 29c lb.; net shippers track in can 1. Cream delivered Portland 41c lb. Raw milk (4 percent) \$2.20 cwt. f. o. b. Portland.

Poultry: Hens weaker 1/2c 5c per cent commission; heavy hens 25c@26c; light 19c@20c; springer white 18c@19c; do colored up to 26c; young white ducks 24c@25c; colored 18c@20c.

Onions quiet; \$1.75@2.00; potatoes \$1.50 per sack; new potatoes 2c lb.

feeder pigs steady; bulk heavy butchers \$14.75 to \$14.85; mixed weights \$14.85 to \$15.00; week's top \$15.25. Light hogs 21c to \$15.25; slaughter pigs \$12.25 to \$12.50; rough \$11 to \$11.25; feeder pigs \$10.50 to \$11.25.

Sheep: Compared with week ago: Bulk good and choice mixed lambs 25c lower; few strictly choice, even weight lambs received; yearlings steady; ewes strong; bulk of good lambs \$14.25 to \$12.00; plain grade 10.25@11.25; light hogs down to \$8.00; yearlings \$8.00@10.00; top \$10.50; best ewes offered \$5.25; common and medium kinds \$4.25 to \$4.00; culls \$2.50 to \$4.00.

PORTLAND, Ore., July 3.—Wax, nominal; Walrus No. 1, 18c@21c; Gilberts, nominal; almonds, 30c@31c; Brazil nuts nominal; Oregon chestnuts, nominal; peanuts 9c@11c.

Cascade bark nominal, steady 6c. Oregon grape root nominal. Hops, Old crop quiet, one bid; 3-year contracts 22c, 1926 contracts 21c@22c.

In the primary market, and which exceeds were willing to miss at a narrow margin sold readily. Ohio floors had a fair call but advanced prices checked buying.

See it today and then see it five years from today. We mean the Sutherland Valley. Do you know there are millions of feet of the finest timber in the state in sight at Sutherland?

### EUGENE BUSINESS COLLEGE

Secretarial, Stenographic, or Bookkeeping Course  
922 Willamette St. Phone 888 Eugene, Oregon  
Enroll Today It's a Good School  
A. E. ROBERTS, President

---

PROMPTNESS  
Operating a large fleet of trucks, we are enabled to render emergency transportation service under all conditions. Please phone us and we'll result at prices extremely low.

"We aim to please!"  
**H. S. FRENCH**  
TRANSFER AND STORAGE CO.  
Phone 820