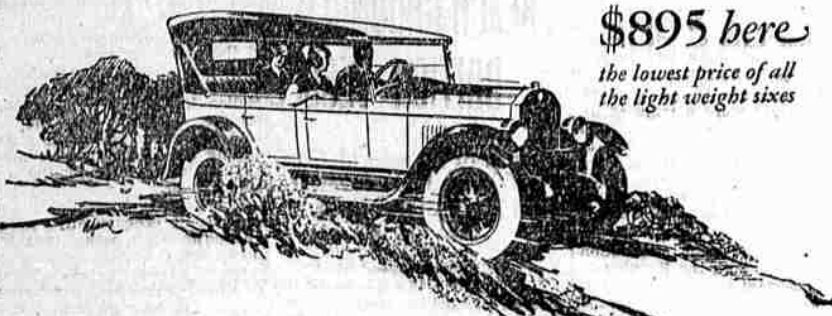


AUTOMOBILE NEWS

This Great STAR SIX

.. has come rushing to the forefront in sales in a short span of months. Read, and know why:

- Bendix (4) Brakes
- Red Seal Continental 6-cyl. Motor
- Easy Disc Traffic Clutch
- Beautiful Lacquer Finish
- 90 full inches Spring Suspension
- Hayes Nat. Wood Wheels [heavy artillery]
- Deep "Pullman" Upholstery
- Full Balloon Tires



\$895 here
the lowest price of all
the light weight sixes

Star Car
A LIGHT WEIGHT SIX AT A LIGHT WEIGHT PRICE

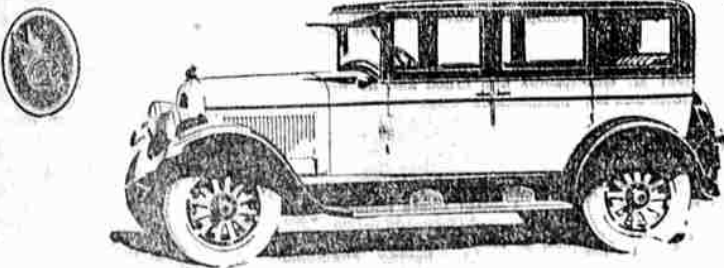
RAPP ROTHERS,
DEALERS

Corner Cass and Pine Phone 371 Roseburg, Oregon

Another Miracle of Chrysler Quality

The New Lighter Six

CHRYSLER '60'



Now comes the new lighter six, Chrysler "60"—one more accomplishment added to the roll of Chrysler achievements.

All the superiority of Chrysler quality has upset prior standards in the lower priced six-cylinder field and has established in effect another new standard for the whole industry to follow.

60 miles—and more—per hour (Chrysler model numbers mean miles per hour); lightning acceleration; Chrysler symmetry of line—in all its striking beauty; Chrysler phenomenal riding ease; the coveted safety

of Chrysler hydraulic four-wheel brakes; impulse neutralizer, oil-filter and air-cleaner; seven-bearing crankshaft; full pressure lubrication; roomy, luxurious bodies; and that sound substantial engineering construction which in every Chrysler car insures long life.

Never before in the history of the industry have you been offered so much value for your money.

We are eager to prove this to you. See the new lighter six, Chrysler "60"; drive it;—and you won't be satisfied with anything less than it.

- Touring Car, \$1075
- Roadster, \$1145
- Club Coupe, \$1165
- Coach, \$1195
- Sedan, \$1295

All prices f. o. b. Detroit, subject to current Federal excise tax

H. L. CONNELLY MOTOR CO.

527 N. Jackson St. Roseburg, Oregon Phone 350

CAREFUL DRIVING IS URGENT NEED

Many civic organizations are getting definitely behind movements designed to increase safety in driving and eliminate as far as possible the needless accidents of the present day. It always seems as though the "other fellow" was at fault when motoring accidents occur. However, if every motorist and every pedestrian would appoint himself a committee of one to observe all regulations of traffic and good sense, fewer accidents would result.

Many motorists in driving out from the curb do not take the precaution to see if a car is approaching from the rear before they dart out into traffic. Pedestrians often start across the street and watch for traffic from one direction only. Some drivers decide to stop at a wayside fruit stand without giving the driver in back any signal of his intention. In other cases, at crossings where no officer is stationed, motorists on the main highway will not extend the courtesy of stopping to allow a motorist on the side road to cross. These are all little things but if properly observed, would make for safer motoring.

In speaking of safety in driving F. L. Wagner, sales supervisor of the Tide Water Oil Sales corporation for this district said, "We are all striving to make driving safer. With the increased number of motor vehicles in operation it is the duty of all connected with the automotive industry to use every opportunity to broadcast the gospel of safety in motoring. Brake lining manufacturers have stepped into the foreground through warning motorists against driving with defective brakes. Legislation against glaring headlights has eradicated this evil. Tire manufacturers are building products with greater strength with special emphasis on the safety features. In the field of lubrication we have found that safety can be built into the oils and greases that protect the life of motor cars. In our product Vedol Forzol, the economy oil for Fords, surer control and smoother operation are provided for Ford drivers. With this lubricant in the crankcase Ford drivers are able to stop and start quickly and without the chatter so common to improperly lubricated Ford cars. This allows the driver to watch his driving and not be worrying and fussing about the operation of his car. With all branches of the industry working together and backed by the support of the leading organizations, safety in driving is becoming more evident every day. We are happy, indeed, for the part we are able to play in this worthy movement."

NEW G-BOY TRUCK IS WELL RECEIVED

The public's reception of the new Graham Brothers G-Boy one-ton truck, recently announced, fully truck, recently announced, fully Brothers dealers, judging by the flood of telegrams and letters received by the factory in Detroit.

There was much comment on the wide adaptability of the bodies, six complete practical body designs being available. The new G-Boy chassis, powered with the dependable Dodge Brothers engine, is offered at the unusual price of \$885 f. o. b. Detroit.

The equitable distribution of the load was recognized as an important feature. The low hung chassis permits unusual ease of loading and unloading under all conditions. In the close inspection of the G-Boy it generally was conceded that the designers have left nothing undone for the convenience of the owner and driver. With all the new features embodied in the G-Boy no curtailment of load capacity was made.

The chassis specifications of the G-Boy stand out prominently and caused much comment on the sturdiness and the completeness of the equipment. The gross capacity is 2700 pounds, including cab and body weights. The wheel base is 126 inches with a 56-inch tread, permitting a turning radius of 25 feet. The rear axle gear ratio is 5.1 to 1. Rated maximum speed is 25 miles an hour. The front springs are made from alloy steel, semi-elliptical, 37 inches long, two inches wide, with eight leaves. Rear springs are of alloy steel, semi-elliptical, 44 inches long, 2 1/2 inches wide and containing nine leaves.

Equipment includes improved all steel flat back shroud with standard equipment instrument board, crowned sheet metal fenders front and rear; full length running boards with splash shields; front bumper; tire carrier under rear of frame; spare rim; electric horn; two headlights with dimmers; tail light, instrument board light; license brackets; jack; high pressure grease gun; hand tire pump and complete set of tools.

The general verdict of the public, according to dealers, was that the new Graham Brothers G-Boy Truck will fill a definite need in commercial transportation, and with the

Leads all others in its Power Efficiency

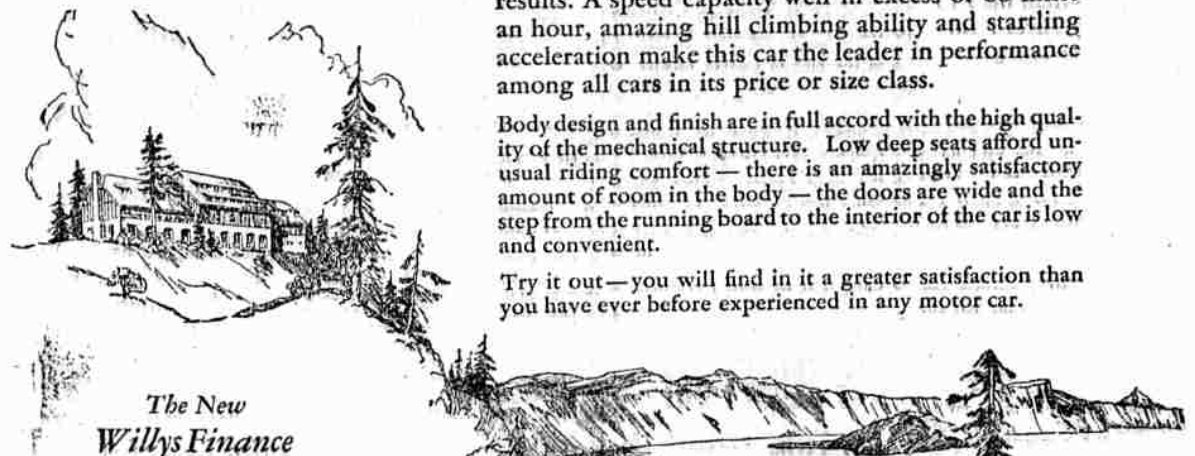
The motor in this new Willys-Knight Six "Seventy" is the most efficient ever developed in America.

From a bore of 2 1/16 inches and a stroke of 4 3/8 inches it develops greater horsepower per cubic inch of piston displacement, throughout its entire range, than any other American built power plant.

The principles of high speed engine design are utilized in the Knight sleeve valve motor with startling results. A speed capacity well in excess of 60 miles an hour, amazing hill climbing ability and startling acceleration make this car the leader in performance among all cars in its price or size class.

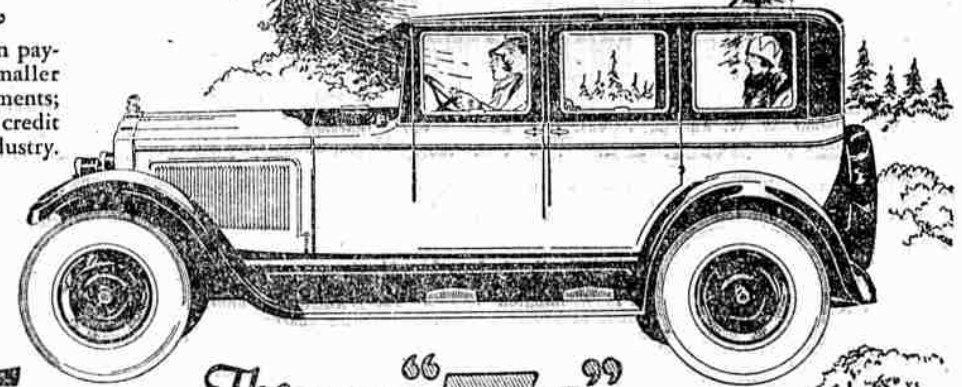
Body design and finish are in full accord with the high quality of the mechanical structure. Low deep seats afford unusual riding comfort—there is an amazingly satisfactory amount of room in the body—the doors are wide and the step from the running board to the interior of the car is low and convenient.

Try it out—you will find in it a greater satisfaction than you have ever before experienced in any motor car.



The New Willys Finance Plan

Smaller down payments and smaller monthly payments;—the lowest credit cost in the industry.



1495
TOURING \$1295
COUPE \$1395
STANDARD SEDAN \$1395
F. O. B. FACTORY

The new "70"
WILLYS-KNIGHT 6

F. W. CHASE

317 North Jackson Street Roseburg Phone 399

AUTO MECHANICS IS SCHOOL STUDY

Specialization in education was first taken up in the universities. Later it entered into the arrangement of high school curricula, and today even "grammar" school endeavor to instruct the young idea in at least the rudiments of manual training.

In order to make this specialization worth while to the youngster the schools have endeavored to use practical methods and subjects that would be of the greatest benefit to the student when he leaves school and goes to work.

Chevrolet has been used to a considerable extent in this school study, and in many cases the "shop" of the manual training department or automotive school has a complete Chevrolet chassis on the floor for use in practical lectures on automotive design and general mechanics.

The Chevrolet has been found peculiarly adapted to this field because it possesses all the features of the larger and more expensive cars such as three-speed gearshift transmission, vacuum gasoline feed, oil pump, electric generator and starter, water pump cooling circulation, semi-reversible steering gear, and many other details of late design.

The fact that Chevrolet handles

and operates in exactly the same manner as most high priced cars without being at all complicated in its design is a feature that appeals especially to the teacher and student.

This study of automotive design not only is of advantage to the student who intends to make motor car mechanics his life work, but to the boy who expects to follow some other line of work or profession. With cars averaging more than one to the family over the greater part of the far west, it is important the owner know something of an automobile or truck's mechanism. An interesting installation along these lines is that of the Garfield School in Berkeley, where Instructor S. J. Leland not only uses a Chevrolet chassis, but the Chevrolet construction manual as a text book.

REFINED NEW STAR TOURING IS LIKED

The refined Star Four Touring Car embodies several interesting features, according to Leo Itapp, of Rapp Bros., local Star dealer. In addition to sweeping chassis changes which improve riding qualities, sturdiness and roadability, a new body by Hayes-Hunt adds further to the comfort and beauty of the car.

"In general appearance, the touring car has been improved by the smart stream lines and beautifully proportioned heavily-nickled radiator that now characterize the Star

models," he says.

"The body is lacquered in a highly attractive shade of royal blue, set off with a gold stripe. The one man top is of heavy, black, highly finished, water proof, artificial leather, with silk curtains to match, opening with the doors. Windshield is double ventilating, upholstery is of good quality black artificial leather and wheels are

black wood, artillery type, with 30 x 3 1/2 clincher cord tires on demountable rims.

"Exceptional seating capacity and leg room has been provided in the refined Star Touring, which offers roomy accommodations for five persons of generous proportions. Low price and operating economy makes this car an attractive value and assures its popularity."

IF IT IS SOMETHING TO RIDE IN

you can find no better transportation values than one of our Used Cars. You buy comfort, long wear, and dependability on terms that fit your income.

- 1924 Chevrolet Sedan
- 1921 Ford Touring
- 1920 Studebaker Special Six
- 1922 Maxwell Touring
- 1921 Hupmobile Touring
- 1921 Mitchell Touring
- 1920 Dodge Light Delivery
- 1924 Star Sedan

H. L. Connelly Motor Co. 527 N. Jackson St.



Courteous Attention

When you stop here for gas and oil you get quick service. Alomite and Zerk Greasing Service

L. R. Chambers Motor Co. Oak and Rose Streets.