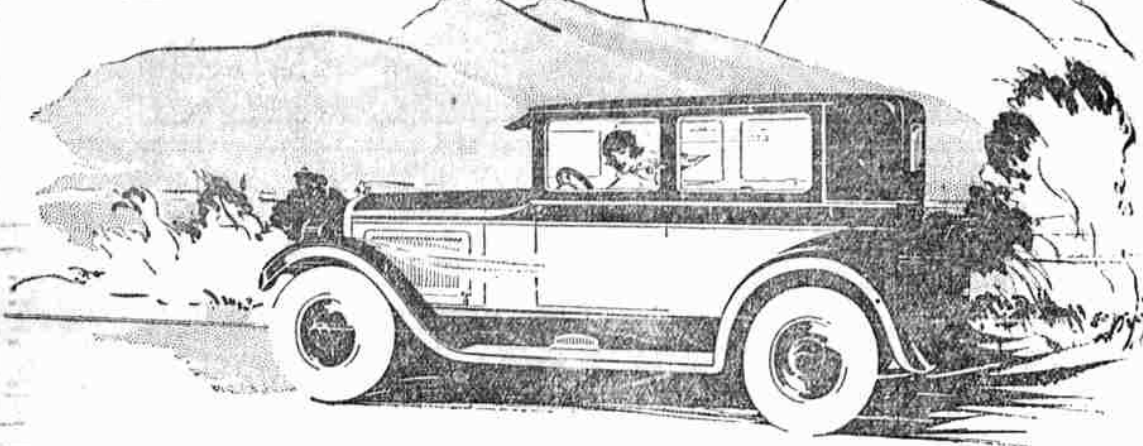


Dominant in its Great POWER



MILE in and mile out—on the longest tours—over rocky mountain roads—up steep winding grades—or swinging along the highway—this Overland Six dominates by its great energy.

\$935

F. O. B. FACTORY

The New Willys Finance Plan

Smaller down payments and smaller monthly payments; the lowest credit cost in the industry

The low swung, gravity balanced motor, sending its full power in a straight line to the rear axle, conquers every driving demand—it will out-run, out-pull, out-accelerate any other power plant in anywhere near its price or size class.

The gravity-balanced chassis and body, with the weight kept low to the ground, gives a road stability that affords an unusual feeling of comfort and safety on curves and where the going is rough.

Back in town, the quick pickup, as you open the throttle to get out of the traffic jam, keeps you well ahead of the other cars on the street.

In appearance, the graceful lines, rich color tones, luxurious upholstery and quality finish make this car look fully \$500 better than its price.

Try it out. Learn what gravity balance and real usable power can bring to light six performance.

Overland Six

F. W. CHASE

317 North Jackson Street

Roseburg, Oregon

Phone 399

PROPOSED FEDERAL AID FOR SETTLERS CHANGED.

WASHINGTON, April 20. The house today refused to accept as part of the interior appropriation bill the senate proposal for a federal financing plan for Spanish Springs, Owyhee, Vale, Baker and Sun River reclamation projects.

amendment covering these five projects, the house agreed to the remainder of the conference report and sent it along to the senate. Under the bill as given house approval, state aid for settlers is provided.

The senate already has agreed to the conference report with its own financing plan substituted for that of the house, but figures classified ads.

representative Cranston Republican of Michigan, in charge of the measure, said he was assured of senate concurrence in the measure today by the house.

Half off! To the News-Review classified ads. They got results.

For results use News-Review classified ads.

DODGE MOTOR CAR IN AN UNUSUAL TOUR

In an adventurous and certainly unique tour, the latest model Dodge motor car recently completed a trip that led from the picturesque snow-capped slopes of Mount Whitney, the highest mountain in Continental United States, to the heart of the desert of Death Valley, lowest point in the world.

With a cover nearly 1,000 miles at wheel, the adventurous party of motorists in their Dodge motor car, which was equipped with the latest model Dodge motor car, recently completed a trip that led from the picturesque snow-capped slopes of Mount Whitney, the highest mountain in Continental United States, to the heart of the desert of Death Valley, lowest point in the world.

They began their tour with the latest model Dodge motor car, which was equipped with the latest model Dodge motor car, recently completed a trip that led from the picturesque snow-capped slopes of Mount Whitney, the highest mountain in Continental United States, to the heart of the desert of Death Valley, lowest point in the world.

Hundreds have put their O. K. on classified columns. They are the starting point of many people's success and prosperity.

CURB ON RECKLESS DRIVING PROBLEM

A patrol of highways by state police is regarded by many commissioners of motor vehicles to be one of the most effective methods of curbing reckless driving and consequently of reducing the number of motor vehicular accidents.

Will H. Marsh, chief of the division of motor vehicles in the state of California, writes that in his opinion "one of the strongest deterrents to automobile accidents in the state of California is a uniform system of highway traffic patrol operated by the division of motor vehicles."

C. D. Buck, chief engineer of the state highway department of Delaware, writes that "the most important instrument and means at our disposal for keeping down the number of motor vehicle accidents in the state, our so-called state highway police force."

Charles A. Harnett, commissioner of motor vehicles in New York state, emphasizes the importance of "the inspection division which patrols the highways and thereby checks the speeding, reckless driver."

Rhode Island reports the effective use of a state police department.

Herbert R. Wilson, chairman of the department of state lands, highways and improvements of the state of Arkansas, believes that the Arkansas "law that requires all cars to stop at railroad crossings" is doing more for anything else in that state to reduce the number of accidents.

C. H. Hubbell, statistician for the department of public works, registry of motor vehicles, state of Massachusetts, regards "the adoption of a regulation requiring all applicants for licenses to undergo a rigid examination as the most important work in Massachusetts looking toward the reduction of accidents."

In Minnesota the railroad and warehouse commission made inspection trips of all the railroads in the state and have designated something like 1,000 of the crossings as full stop crossings, where all vehicles are required to come to a full stop before crossing.

Benjamin G. Eynon, registrar of motor vehicles in Pennsylvania, writes that "one of the most important phases of Pennsylvania's effort to reduce motor vehicular accidents is the close application of the law which relates to the examination of applicants for operators' licenses."

The many letters which Mr. Chrysler received from all parts of the United States reveal a wide range of opinions about the most effective means of reducing accidents. He commends to everyone interested in this whole subject of street and highway safety the reports of the national conference on street and highway safety which was held in Washington in cooperation with the department of commerce. It is intended that this national conference shall be followed by state and regional meetings and that those who attended the Washington conference shall constitute committees on organization for local meetings.

RIGHT INFLATION OF BALLOON TIRES

Under-inflation of balloon tire costs the owner just 700 miles of service per pound under the correct pressure, according to the results of a series of experiments by the Ford Motor company. These experiments were conducted in conjunction with a campaign to help Ford car owners get the most out of their tires.

To determine at just which point the Ford size balloon tires—29x40—yielded the maximum comfort to passengers consistent with maximum mileage, all makes of tires were tested. At the end of the test period, the exact loss per pound of under-inflation was calculated in terms of mileage and a bulletin was sent to Ford dealers and service stations advising the correct pressure.

A number of common tire ailments were traced directly back to under-inflation. Among the most common are rim cuts, tread separation, over-heating and steam braking in addition to a more rapid rate of natural wear and deterioration.

On the other hand, every pound of over-inflation takes its toll of comfort and the fundamental value of balloon equipment is lost. Other advantages of low pressure tires, namely greater traction, ability to travel over soft ground without sinking and quick stopping without skidding, are also nullified in a direct ratio to the extent of the excessive air pressure.

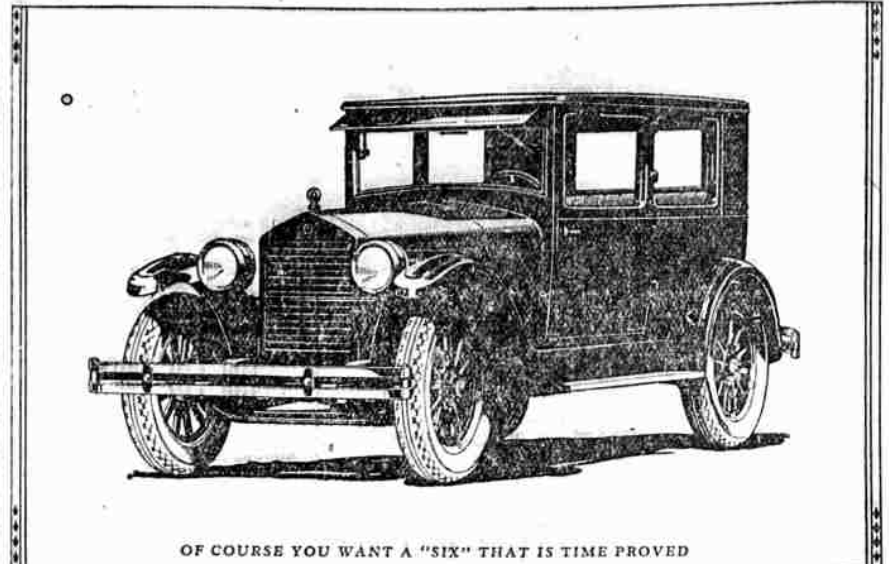
The following inflation table has been proven to best combine riding comfort with long life in 29x40 balloon tires:

Type	Pounds Inflation	Front	Rear
Roadster	27	27	27
Coupe	27	27	27
Touring Car	27	27	27
Tudor	27	27	27
Fordor	27	27	27
Runabout with pickup	27	27	27
Body	27	27	27

er desolation is truly terrifying. And yet it is not without fascination.

300,000 ESSEX OWNERS

They know its time proved value, its rare smoothness and performance, its sturdiness and economy



OF COURSE YOU WANT A "SIX" THAT IS TIME PROVED

Essex proved that everyone wants a "Six." But low price is not the only reason why 300,000 owners are praising it so highly nor does price alone explain the reason for its continued sales leadership. Time proved qualities are what owners talk about. They speak of the little attention Essex requires and of how frequent and small is the service cost.

They tell of economy in fuel, oil and tires. And they praise Essex smoothness in performance, its nimbleness and its power. They are the greatest Essex sales influence.

The Essex motor is built under Super-Six patents that give a performance and quality exclusive to this famous principle. Because of its vast production and the constant development of economical and precision methods of manufacturing its cost is little more than the lowest priced car on the market. Can you ignore such facts in the choice of your car?

\$909

At Your Door With Nothing Else to Pay

EQUIPMENT

Front and Rear Bumpers; Automatic Windshield Cleaner; Rear View Mirror; Transmission Lock (Built-in); Radiator Shutters; Motor Meters Combination Stop and Tail Light

NOW LOWEST PRICE IN HISTORY

The "A. V. D."—At Your Door plan is hailed as an assured step in merchandising automobiles. All doubt is removed as to the price you pay for your car equipped and delivered at your door. It saves many dollars.

Convenient and Easy Purchase Terms

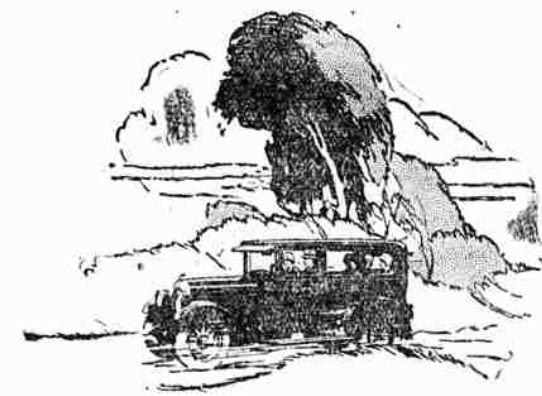
ROY CATCHING MOTOR COMPANY

125 N. Rose St.

Phone 438

Roseburg, Oregon

1259



Chrysler "70" Royal Sedan, \$1995, f. o. b. Detroit

All America Has Taken The Incomparable Chrysler To Its Heart

The Chrysler "70" sells itself every time it exhibits its dashing appearance on road or highway. The contrast between it and other cars is so marked that the desire to own one is bred then and there.

But that desire is as nothing compared to the delight induced later on. For the Chrysler is just as far beyond comparison in performance, roadability, ease of handling and durability as it is in looks.

That the American people have taken the Chrysler to their hearts is no surprise at all—it is a very natural thing.

They are almost extravagantly enthusiastic about the Chrysler because the Chrysler has shown them long-lived motoring delights beyond all comparison.

We are eager to demonstrate the Chrysler's many advantages.

CHRYSLER "70"

CHRYSLER "70"—Phantom, \$1995; Coach, \$2445; Roadster, \$2625; Sedan, \$1695; Royal Coupe, \$2725; Brougham, \$2885; Royal Sedan, \$3005; Crown Sedan, \$3025. Disc wheels optional.

CHRYSLER "70"—Touring Car, \$2115; Roadster Special, \$2495; Club Coupe, \$2495; Coach, \$2515; Sedan, \$2695. Disc wheels optional. Hydraulic four-wheel brakes at slight extra cost.

CHRYSLER IMPERIAL "70"—Phantom, \$2245; Roadster, \$2625; Coach, \$2885; Sedan, \$2905. Disc wheels optional. \$2285; Coupe, four-passenger.

\$1995 Sedan, four-passenger, \$1995 Sedan, seven-passenger, \$1995 Sedan, six-passenger, \$1995. All prices f. o. b. Detroit, subject to current Federal excise tax.

All models equipped with full balloon tires.

We are pleased to extend the convenience of time payments. Ask about Chrysler's attractive plan. Chrysler dealers and superior Chrysler service everywhere.

Chrysler models are protected against theft by the Patent Controlled Car Numbering System, plus tamper-proof and exclusive with Chrysler, which cannot be counterfeited and cannot be altered or removed without conclusive evidence of tampering.



H. L. CONNELLY MOTOR CO.

527 N. Jackson St.

Roseburg, Oregon

Phone 350

It's concentrated Coffee



MJB doesn't take your coffee any and it's still hot. It gives the full taste and the way it is made is a natural process. It's stronger, it's smoother, it's sweeter, it's more favor to the ground. It means you can save a lot of MJB and still get a rich, smooth cup of coffee. Try it and see!

MJB

—there's Economy in its Strength