

# ROSEBURG NEWS-REVIEW

DOUGLAS COUNTY

This Section Printed in the Exclusive Job Printing Department of the News-Review

ROSEBURG, OREGON, FRIDAY, JANUARY 1, 1926



General View of Valley below Myrtle Creek.



Roseburg-Coos Bay Highway looking west from Coast Range Divide into Camas Valley.



View of Broccoli patch bordering Roseburg



Along Pacific Highway in Douglas County.



Oats in shock ten miles below Dillard.



Mt. Bailey towering to the skies across Diamond Lake in Douglas County.



Umpqua Valley Strawberries.



Eagle and Rattlesnake Rocks viewed from Oak Flats in North Umpqua Country.



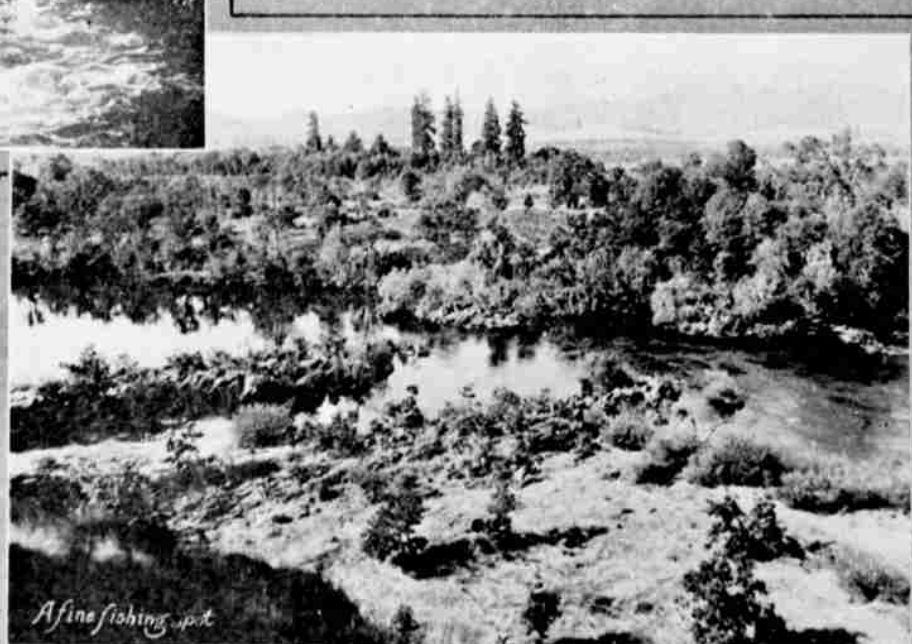
Mt. Theilsen and Diamond Lake Lodge At the end of North Umpqua Road.



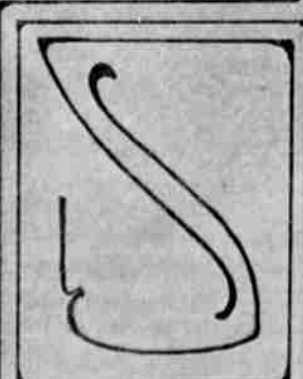
The North Umpqua River at Glide where Little River enters the stream.



View in Booth's Prune Orchard.



View of North Umpqua River from Roseburg Country Club.



A fine fishing spot