

# AUTOMOBILE NEWS



## Take This Tip

Don't condemn your engine, or trade in your present car until you are sure a good carburetor won't cure its troubles.

ZENITH sure makes a difference! ASK ABOUT OUR FREE TRIAL OFFER

L. G. DE VANEY, 406 Cass St.

## BOOTH - KELLY HOLDINGS EYED BY TEXAS FIRM

Representatives Visit Lane County Plants, But No Deal Made So Far.

## MERGER PLAN DENIED

Northwest Is Generally Looked Upon as Future Center of Activity in Fir Manufacturing.

(Associated Press Landed Wire.)

EUGENE, Ore., Sept. 23.—Although there are a number of representatives of Southern lumber interests who have been here recently with the view of purchase and operation in Lane county there is no contemplated change in the way of ownership or merger in connection with the Booth-Kelly Lumber company. This statement was made today by R. A. Booth, vice-president of the company, in reply to rumors prevalent for the past week or more in Eugene and Portland lumber circles that the Lane county organization was soon to undergo a change in control. Mr. Booth said:

"We have been receiving a large number of inquiries from Southern lumbermen who are very much interested in the possibilities of the fir development in Lane county and the Pacific Northwest. With Mr. A. C. Dixon, general manager of Booth-Kelly Lumber company, I recently made a trip through the state with representatives of the lumbering interests of the south, visiting a large number of lumber centers.

"These Southern lumber men are much interested in the fir industry as some of them contemplate operations in the Pacific Northwest. They desired to inspect the working of camp and mills in this district and their visit and close inspection of the Booth-Kelly mills in Lane was for the purpose of obtaining information as to modern

methods employed in handling the fir."

The name of the Latcher Moore Lumber company of Orange, Texas, large operators of timber in the South, was the firm frequently mentioned in connection with the rumored change in the Booth-Kelly company.

Local lumbermen and bankers who are closely identified with the lumbering interests confirm the fact that the lumbermen from the south, representatives of large financial interests, are looking toward Lane county and the Northwest for further development and that recently parties were here investigating the field and conferring with owners of timber in this area.

## WORK NIGHT, DAY TO FILL ORDERS

DETROIT, Mich., Sept. 23.—Sustained demand and a growing list of unfilled orders has caused the Chevrolet Motor company to increase heavily its production schedule during September.

The schedule revision involves an increase of more than 16 per cent over the production program originally planned for September. The new schedule calls for 52,145 motor cars and trucks in September, a Chevrolet record for that month and only 2,078 less than the highest production month in the history of the company.

Both day and night shifts have been suggested to maintain the new schedule. The company shipped 4284 cars to dealers on Aug. 31, establishing a new record 600 higher than the highest previous shipment for one day.

The company, which recently made its two-millionth car, attained during August a greater production than for 1925 than the entire production of 1924.

Several factors have contributed to the unprecedented demand according to C. E. Dawson, assistant general sales manager of the Chevrolet Motor company.

"The August 1 reduction of \$40 to \$50 in the closed model prices together with the announcement of the improvements on all models caused a still further increase in the unfilled order limit," said Mr. Dawson. "The greatest demand at present appears to be for the Chevrolet Coach. Increased popularity also has been gained by the new Utility Express one-ton truck which has replaced the former truck of the same name.

"Another factor in car demand is the rapid economic recovery of the south and southwest where purchasing power is now on a par with the remainder of the country."

## ROSEBURG HIGH FOOTBALL TEAM WILL BE LIGHT

Many Freshmen Turning Out For Squad Indicates Good Team in Future.

## WILL BUILD A FENCE

Wire Will Be Stretched to Keep Spectators From Crowding on Field During Game.

The Roseburg high school football team is showing much promise in spite of the extreme light weight. Coach Doubet is well pleased with the great number of freshmen turning out for practice each night, and although the team this year is not expected to be more than of average strength, the fact that so many youngsters are turning out permits of a development which will give the school a strong husky eleven for several years to come.

Thirty-eight turned out for the first night's practice, after the opening of school, and the squad is growing in size. A tackling dummy has been rigged up, and the boys are taking nightly work in hitting the dummy, and are showing up well.

A light scrimmage, the first of the season, was held last night, and although the boys showed many weak spots in their work, and were quite ragged in tackling, and other points of the game, indications are that the team will soon be able to put up a fairly strong offensive as well as a good defense.

Arrangements are now being made to build a one-wire fence around the field, ten feet outside the out-of-bounds lines, which will keep spectators from crowding the players during the progress of games.

The schedule of the season gives the team some hard work. On October 3 the Roseburg team goes to Marshfield, and the following Saturday, October 10, North Bend will play at Roseburg. On the 21st Eugene plays here; on the 21st Roseburg goes to Ashland, on the 6th of November Roseburg plays at Cottage Grove, on the 11th Grants Pass, and the season concludes with a game with Medford here on the 18th.

Cook with us. OH BOY, bought a bargain and there are many more cars advertised. Read 'em yourself!

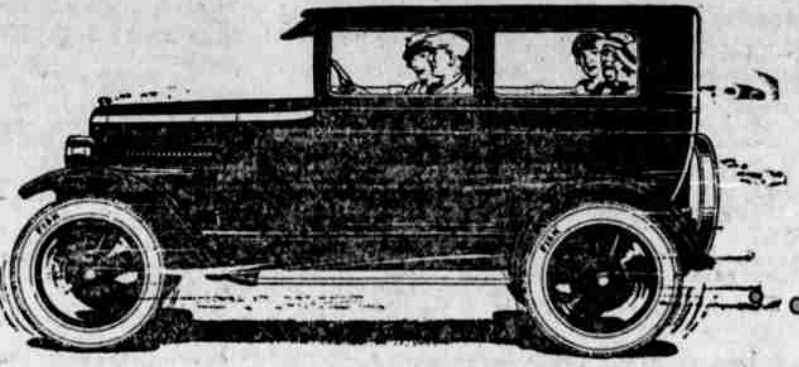
## GRAY WOLF ALMOST EXTINGUISHED IN WEST.

(Associated Press Landed Wire.) OLYMPIA, Wash., Sept. 23.—Dr. A. K. Fischer, chief of the bureau of economic investigation of the United States biological survey, who was in Olympia today, declared not more than 100 gray wolves are left between the Mexican and Canadian borders, because of an extermination campaign conducted by federal and state hunters. Thousands formerly ranged the Rocky Mountain states.

# "It's the only light car I ever was proud to have in the garage alongside my limousine"

...in these words, an owner of a couple of large, expensive cars summed up his opinion of this Overland... Pride of ownership! Sterling worth, through and through! That's the backbone of Overland's popularity. Owners know this car today as America's outstanding light-car value—the one light-car with nothing "cheap" about it.

... and now, at this new low price, even greater value is yours!



was \$655 Now \$595

- Full-size 5-passenger Sedan**—room for 5 regular people... smartly-designed, clean-cut, rakish, low, extraordinarily good-looking... body finished in polished lacquer... rich deep blue with glistering jet-black trimmings... as handsome a light automobile as anybody ever looked at.
- Wider seats**—the widest any light car built... single-piece, undivided front seat, 29 inches wide, 15 inches deep, wider back seat, 45 inches wide, 18 inches deep... You know what such ample seat space means to the comfort and convenience of your passengers. No more crowding!
- Big wide windows**—more than 20 square feet of window space—all the air and all the broad, uninterrupted vision of a touring car.
- Extra wide doors**—easy entrance and exit to both front and rear seats. No discomfort to anybody getting in or out. Each door has four extra heavy hinges. They're built to withstand punishment!
- Very latest one-piece windshield**—especially valuable in night-driving. Gives clear, unobstructed vision. No neck craning. You can always see where you're going. More easily adjusted—you don't have to fuss with it. Easier to clean and to keep clean. One of those little things that mean so much.
- Fine broadcloth upholstery**—expensive-looking, very durable, deep comfortably-cushioned seats, Brussels carpet in rear, rubber carpet in front; more leg-room for the driver, more space for your passengers; big-car value, big-car atmosphere all the way through at even less-than-current light-car cost!
- A 27-horsepower engine**—sturdy, reliable, a beauty on the hills, with all the power you need for 50 miles or 50,000; L-head motor, large valves, more efficient and giving more power than over-head valves, a quieter motor with half the working parts...
- Oiling system**—positive centrifugal-no pump to break or get out of order, in 6 years' use in advance of March 15, when the first installments of taxes on 1925 incomes will be due. The Connecticut representative reiterated that the maximum surtax should be reduced at least to 20 per cent and that there should be a scaling down of the inheritance taxes.
- Honed cylinder walls**—cylinder walls honed after boring, which makes them exceptionally smooth, removes any fragments or rough spots left by boring tools... honed motor—the Overland is the only honed-cylinder car in its price-class; larger valves—valve head 1 1/2" diameter, against the usual 1 1/4" diameter—your motor-power is in direct relation to your valve-area, you get more you can never expect in a car with smaller valve-area...
- Borg and Beck disc type clutch**—fully enclosed and running in a constant bath of oil—one of the finest clutches made in this country. You who are used to frequent and troublesome lubrication of your clutch bearings will appreciate the vital advantage of this exclusive Overland feature...
- Ignition system**—Auto-Lite sparking, lighting and ignition—enclosed storage battery holder—drum type headlights, legal lens, braced with large diameter in head-lights—shut-proof ignition lock—dash light—the same high standard that you get in cars costing two or three times the money; Transmission and Universal Joint—three speed, selective sliding gear transmission.
- A rear axle system**—the equal in strength and size to that used in cars having double the weight.
- Overland's axle shafts of Molybdenum steel**, the toughest steel known—in the entire three years in which Overland has used this axle system there is no case on record where an axle has ever been broken.
- Extra big, extra strong brakes**—extra efficient, extra sure—one full square inch of braking surface for every 15 pounds weight of car, the highest ratio of braking surface to car weight of any car in Overland's price-class.
- Chassis**—strong, rigid frame with lots of bracing—springs of Chromo Vanadium steel—the finest and strongest spring steel known—every leaf is genuine Chromo Vanadium front wheels mounted on Timken taper roller bearings; rear wheels, on New Departure ball bearings; Molybdenum steel tapered steering knuckles; breakable steering knuckles; breakable tie-rods; steering gear; only 27 points to lubricate on entire chassis against 35 on 60 in other cars... in what other car in Overland's price-class, or in what car selling for several hundreds of dollars more, can you match, or anywhere near it, this impressive list of Overland advantages?

# Standard OVERLAND Sedan

## WELLS & CHASE

31 North Jackson Street Roseburg Phone 399

## Dry Forces Mop Up Summer White House District



Scores of rum chasers are engaged in a new drive against liquor smuggling along the Massachusetts coast, which is declared to be the "wettest spot in the U. S." since the dry patrol cut off the flow of rum into New York from outside the 12-mile zone. While the campaign is in progress, President Coolidge is at Swampscott, in the heart of the district. Raiders are seen patrolling the coast.

A four-year intensive campaign against illiteracy is sponsored by the Interior Department, Bureau of Education, in order to reduce the number of illiterates before the 1930 census.

**A Small Store can do a big business— Can Have Thousands of Salesmen**

Every copy of this newspaper is a good salesman

## DEMPSEY ENTERS AMUSEMENT FIELD

(Associated Press Landed Wire.) SACRAMENTO, Cal., Sept. 23. Jack Dempsey, heavyweight champion of the world, has entered the field of an amusement promoter. Articles of incorporation of "The Barbara Corporation of Los Angeles," filed today with the secretary of state, formed for the purpose of building theatres, amusement halls and wrestling and boxing pavilions, revealed Dempsey as one of the directors.

## TAX REDUCTION TO LEAD PROGRAM OF NEXT CONGRESS

WASHINGTON, Sept. 23.—Tax reduction will have right of way in the house from the day congress convenes, President Coolidge was informed today by Representative Tilson of Connecticut, republican floor leader. Even the appropriation bills

## BOOTLEGGERS, MUCH WANTED, CAPTURED

PORTLAND, Ore., Sept. 23.—Vice squad officers today arrested Sidney Garrick, charged with transporting and possessing fifty gallons of liquor, and declared that Garrick was the man who escaped by brandishing a gun after an auto crash on the highway six months ago near Sherwood, in which three persons were injured. Garrick denied that he had been in the Sherwood incident.

## MOB LAW LOSING POPULARITY.

Mob law is not so popular as it used to be in the United States. During the first half of 1925 only nine lynchings were reported to the Tuskegee Institute. Though this was an increase of four over the corresponding period of 1924 it showed a decline of six as compared with 1923 and a drop of twenty-one when measured by the record of 1922, when there were thirty during the first six months. The 1925 lynchings occurred as follows: Arkansas, 1; Florida, 1; Georgia, 1; Louisiana, 1; Mississippi, 2; Utah, 1; Virginia, 1. — October Sunset.

Courses in rural education were given in 77 colleges and universities, 52 teachers colleges, and 70 normal schools during the school year 1923-24. The courses given most often, as described in Rural School Leaflet No. 37 of the Interior Department, Bureau of Education, were called rural education, rural school administration, rural school management, and observation, and practice teaching.

**PINE STREET MACHINE SHOP**  
Opposite Flour Mill

General Machine Work  
Automobile Work a Specialty  
Gear Cutting