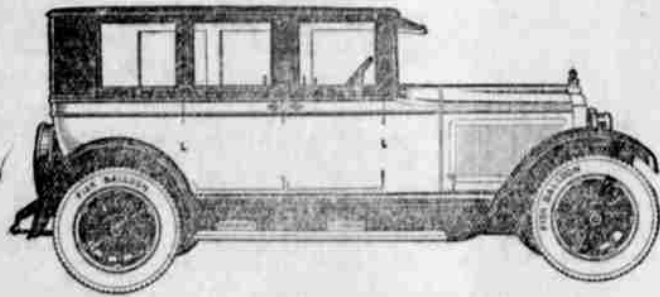


# AUTOMOBILE SECTION

WILLYS-OVERLAND-FINE-MOTOR-CARS

## 50,000 Miles and More Mean Nothing to This Great Car



—and owners without number have reached this record without spending a single dollar for engine repairs

Ask any Willys-Knight owner what is his total mileage. Then ask him what has been his motor-maintenance cost, not per mile but per year.

30,000, 40,000, 50,000 miles and over. Not a day out of active service. Not a dollar for repairs. . . . A common experience this, among Willys-Knight owners.

The sleeve-valve engine principle does away with carbon troubles. There are no valves

to grind. To this exceptional engine efficiency is added another exclusive advantage—absolute lack of vibration, due to the Lanchester Balancer. The Willys-Knight is the only automobile in the United States equipped with this device . . .

That's why the Willys-Knight runs so smoothly, so silently. That's why it wears so everlastingly—and why the Willys-Knight owner counts on keeping it two and three times as long as other cars.

# WILLYS KNIGHT

Four-cylinder models from \$1295 to \$1695. Six-cylinder models from \$1845 to \$2495. All prices f. o. b. Toledo. We reserve the right to change prices and specifications.

## WELLS & CHASE

Overland Dealers—Accessories Phone 399 317 North Jackson Street

Here From Myrtle Point—Miss Lucille Collins arrived here last evening from Myrtle Point, and will spend a few days visiting here.

Visitor Tuesday—Max Kimmel was among those from southern points in the county to visit and transact business in this city. He is from Myrtle Creek.

## Roseburg Garage

Official AAA Garage and Mechanical Service Station.

### Free Towing

Service within 10 miles Radius for members of the AAA

Phone 408

# GUARANTEED Ford used cars

IT IS our desire to make satisfied owners of used car buyers. All reconditioned used cars bearing this tag carry our guarantee and our pledge—backed by our service—that you are getting full value for the money spent.

## C. A. Lockwood Motor Co.

Roseburg, Oregon

## PACKARD MOTOR TO CONQUER WATER

NEW YORK, July 29.—The fact that George H. Townsend, well-known sportsman, is having his new power boat, being built for the Manhasset Bay races in August, equipped with a Packard (Gold Cup) motor, signifies the opinion of two automobile engineers in the conquest of the water. For Mr. Townsend is president of the Moto-Meter Co., Inc., and has named his new high-powered boat "Miss Moto-meter." The Gold Cup races will take place in Manhasset Bay on August 27th, 28th and 29th.

## RETARDED SPARK CAUSE MOTOR HEAT

A common cause of motor overheating is a retarded spark. A retarded spark causes a late spark, a spark that does not fire until the piston has started well downward on the explosion stroke. Consequently the gases have expanded and when fired are in contact with a larger area of the cylinder walls. As the water system is in contact with this larger heated area, there is greater and quicker heat absorption which, when continued for any length of time, causes overheating. In a six cylinder engine, at a speed of 2600 R. P. M., the distributor furnishes 139 sparks per second. With a retarded spark, the temperature reaches nearly 3000 degrees Fahrenheit in direct touch with a larger area of the cylinder walls. Again the heat-indicating instrument on the radiator cap comes to your aid, and warns you that something is occurring. An abnormal amount of heat which, unless quickly corrected, will cause serious damage.

## GRIT WEARS OUT ENGINE BEARINGS

"One of the things that shortens the life of a fine automobile engine is wear due to grit that gets into the lubricating oil," says J. E. Fields, vice president in charge of sales of the Chrysler Sales Corporation. "This was one of the very first things guarded against by Chrysler engineers and more than 18 months ago, when the Chrysler Six was introduced, it was fitted with a filter that purifies the oil while the engine runs. It is designed to provide a clean oil supply as this that Chrysler Six engines can do in delivering the remarkable service that they do with a minimum of trouble. Chrysler was the pioneer amongst builders of motor cars in the adoption of the Purifier, as the oil purifying system is known. The leadership of Chrysler engineering methods is now everywhere apparent as the example of including an oil filtering device is now being generally followed."

## GASOLINE STOVE HANDY IN CAMP

In considering the ordinary part of the motor camper's outfit, the gas stove is a handy item. For an extended trip both the gasoline and wood stove can be used to good advantage. While the gasoline stove is quick and more efficient, a few campers prefer the wood burning stove. There is something about it that is in cooking one of the motor camper's outfit. It is a stove that is simple and easy to use, and it will replace the old-fashioned wood stove that is so often found in the motor camper's outfit. For cooking an occasional meal over the open fire, a wood stove will be found useful. It is made of heavy galvanized sheet iron and reinforced with flat steel bars. Two small pipes will serve the same purpose as a large one and will require less space for carrying under the seat cushion. In many instances of the country open fires are barred, so even the convenience of the wood stove provides a means of escape. It is a stove that is a number of experienced campers will regard to camp stoves, the two burn type gas-

line stove, with folding oven would undoubtedly gain preference over any other type of cooker. The gasoline stove is far superior to the wood burning stove as it eliminates the collecting of fire-wood and does away with the bothersome smoke and ashes nuisance. There, too, there is no waiting for the stove to become hot enough for cooking, as it provides full cooking heat immediately after it has been lighted. It is



essentially the motorist's way of cooking for it burns the same fuel as is used in the car and it is quite independent with regards to weather conditions for it can be used inside the tent as well as in the open. Among the new improved models of camping stoves there is one, acknowledged by outdoor men of authority as being the finest camp cooker ever made. This product, the Coleman camp stove, has many built-in features including the built-in pump, funnel, folding oven and tank. A hot blast generator, much like a blow torch, provides quick heat and a cooking fire is ready two minutes after it has been lighted. This stove is equipped with a folding oven that, when used for baking and broiling, relieves the monotony of fried food on a motor cruise. The oven is very efficient and can also be used as a dehydrator to warm the tent on a cold night.

Extension legs may be made for the gasoline stove so that it may be lifted off the ground to a more desirable and comfortable cooking position. The entire outfit, when folded, resembles a small suitcase, for it is but 18 inches long and weighs but 15 pounds. Regardless of the cooking method used, whether by the gasoline stove or wood fire, use every precaution to prevent fire. In putting out the camp fire consider the slogan of the forest ranger—Be Sure That Your Camp Fire Is Dead—Then Bury It. Next Week—Cooking Utensils.

## GREATER SALES ON HUDSON-ESSEX

"In the first six months of 1925, 125,000 Hudson and Essex cars have been sold," said Roy C. Ketching, Hudson-Exsex, local dealer. "This exceeds last year's total for the same period by more than 80 per cent. It is all the more significant because in general the large manufacturers of cars in this field have shown no gain or have not equalled their 1924 production for this period. "Hudson and Essex cars have not only surpassed every 6-cylinder car in the world, but every month witnesses a new high selling mark in Hudson-Exsex own records. Their conspicuous and increasing success reflects the rapid and completeness with which the real facts regarding automobile values have penetrated the entire market. "Our sales here in Roseburg, so large as they have been, would have been even greater had we been able to secure all the Hudson-Exsex cars buyers wanted, and this is typical throughout the country. "The steady increase of factory production means that more cars will be available during the latter part of the year, and we shall undoubtedly exceed our remarkable sales record of the past 6 months. Two jumps ahead of the other flog is the man who reads the classified ads for short-cuts to money.

## SARFF'S Auto Wrecking House

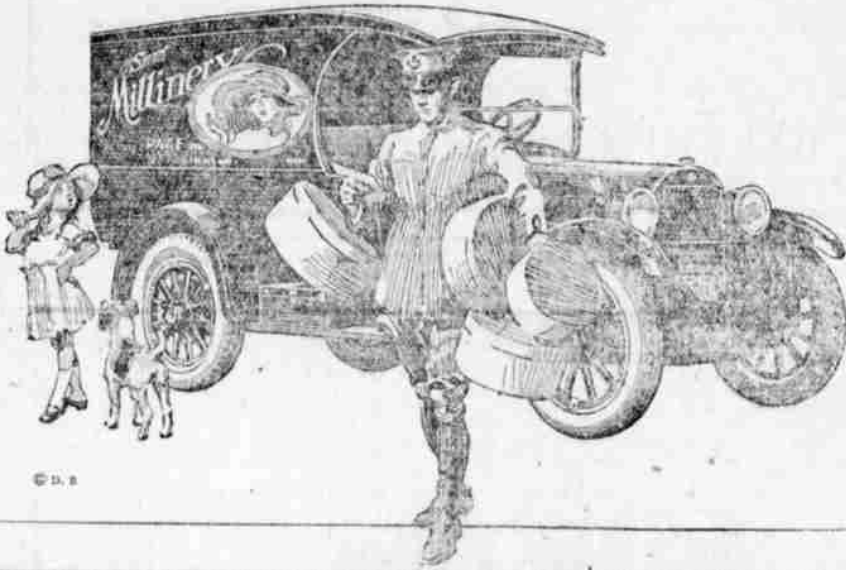
The House of a Million Parts and the place to buy your auto parts and save money. Come in and if you don't see what you want ask for it. Old Cars Bought for Wrecking. Phone 553

## DODGE BROTHERS COMMERCIAL CAR

So trim and businesslike in appearance that frequently it pays a substantial part of its own way in advertising value alone.

J. O. Newland & Son DODGE BROS. DEALERS

Roseburg, Oregon Phone 458



## "FLEET ORDERS" FOR CHEVROLET CARS

"Fleet orders" for both passenger cars and trucks are being received with increasing frequency by the Chevrolet Motor Company from large organizations whose investigations have established the economy of providing their salesmen and other representatives with reliable motor transportation. Hundreds of Chevrolet fleets have been delivered since the first of the year. The group purchasers assign various reasons for their decision to standardize on Chevrolet. Reliability and economy, one of the factors in Chevrolet's popularity among the farm districts, is the reason most frequently given by the organizations whose men penetrate the districts. Other factors are the universal availability of service at Chevrolet's 3,000 street dealers, 2,900 associate dealers and 11,000 parts depots which dot the country. The purchases of fleets for city use prefer the Chevrolet because of its attractive appearance and easy handling and its 18.5-foot turning radius. Among the recent group purchasers is the United States Tobacco Company which has furnished a fleet of 24 Chevrolet coaches to its employees in the districts of Chicago and New York City. A fleet of 24 coaches has been purchased by the Universal Portland Cement Company for its sales men throughout the country. Hundreds of other companies in a wide variety of business have established Chevrolet fleets ranging in numbers from six to 50 cars. "Sales cost records are proving daily the economy of automobile transportation for salesmen," said R. H. Grant, general sales manager of the Chevrolet Motor Company. "The average expense per call incurred by the salesman driving an automobile is lower than by rail due to the fact that the salesman using a machine makes three times the number of calls and spends more time with each customer. He will make calls which otherwise he

would skip were he limited by rail transportation. In addition a salesman who drives an attractive car up to the customer's establishment enjoys a peculiar psychological advantage over the salesman who arrives on foot. Unconsciously the buyer acquires a more rapid and courteous attention to the man with the car."



## Pleasure AND Commercial Cars

ED MARSH MOTOR CO. Sales and Service Oak and Pine Phone 446



Repairing That Stands the Test When we undertake your auto work, we are going to make it satisfactory to you. Drive your car in or phone for men to come after it. Hall & Young Garage 631 Winchester St. Phone 335