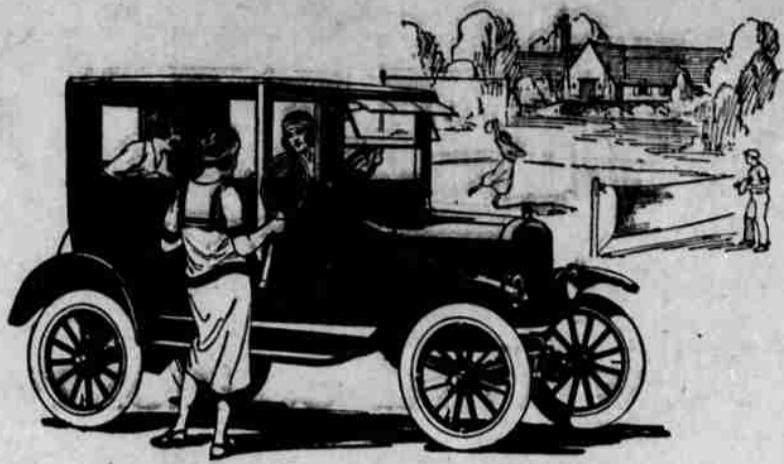


AUTOMOBILE NEWS



School Is Out

Vacation time has come at last! Millions of families will take advantage of Ford ownership to tour this summer.

Wherever you live the roads invite you to travel. You can tour every day if you own a Ford car. You can take short trips or long trips, anywhere, any time, any weather. A Ford car will make this summer a happier, healthier one for the whole family. And it costs no more for five to ride than for one.

Low prices and easy payments bring the Ford car within the means of nearly every household. It is the most profitable investment you can make with your vacation savings.



Runabout - - - \$260 Coupe - - - \$520
Touring - - - 290 Fordor Sedan - 660

On open cars demountable rims and starter are \$35 extra. Full-sized balloons three \$25 extra. All prices f. o. b. Detroit.

Tudor Sedan
\$580

F. O. B. Detroit

SEE ANY AUTHORIZED FORD DEALER OR MAIL THIS COUPON

Please tell me how I can secure a Ford Car on easy payments:

Name _____
Address _____
City _____ State _____

Mail this coupon to

Ford Motor Company
Detroit

YOUR TENT FOR THE AUTO TRIP

When choosing the tent, the camper should carefully study his own individual needs and tent his purchase accordingly. A tent that might be ideal for one camping party will not always do for another. Here are a few of the many points to be considered before making the tent purchase; the number of people on the trip, the length of the trip, weather conditions, "one night" stands or a permanent camp, and the accommodations offered by the car itself.

The tent should be large enough to comfortably house every member of the party. It should be light and compact for ease in transportation. It must provide real shelter against storms, wind and cold. It should be equipped to keep out mosquitoes, bugs, insects, etc. The ideal tent can be set up by one person in a few minutes time.

There are many different types in tents but the two that have the majority of auto campers are met with ready approval among the palmetto or umbrella and the lean-to types.

The lean-to, or standard auto tent, is a very simple tent and very good for general auto camping purposes. It consists of a single sloping roof with a three foot back wall, side walls and an open front. The canopy at top of the tent extends over the car and fastens to the wheels or hubs on the opposite side of the car. When the standard auto tent is used the car can be made into a dressing room.

The palmetto and umbrella tent stand quite independent of the automobile. There are no guy ropes needed and only one center pole used on the palmetto. There are screen windows, a pocket, a full door completed with a canopy. It is very easy to set up; simply stake down the corners and raise the center pole. This tent is equipped with a sewed-in floor and a canvas sill that keeps out unwelcome visitors.

A bobinet fly may be had to fasten over the door to keep mosquitoes out of the tent.

You should leave very little trouble in setting up your tent if you take special note how it is folded when you first take it out of the bag. Try setting up the tent in the back yard or use it over night to get used to handling it before you leave on your trip.

Most of the modern tents come complete with jointed poles and wooden stakes. It is advisable to carry a number of extra metal stakes as the wood stakes that come with the tent are more easily broken than the metal ones.

The poles and stakes should be carried in a separate bag. This method saves wear on the tent and eliminates all danger of having the tent punctured by a sharp tent stake or pole tip.

Next week—Leaving the car to the best advantage.

FORD SERVICE CAN BE HAD ANYWHERE

DETROIT, June 30.—One of the most striking illustrations of changed motoring conditions since a few years back, when the car owner feared to go on any lengthy tour, is found in the Ford organizing which is today providing service facilities for approximately half the motor vehicles in the United States. It is estimated that there are 9,000,000 Ford cars and trucks traversing streets and highways of the nation and Ford service stations are scattered in most every city, village and hamlet to keep these cars running with a minimum of delay and low cost.

The Ford Motor Company was among the earliest automobile companies to recognize that popularizing motor car travel depended upon service facilities and that the motorist in need of service or replacement parts must not be compelled to wait a day or two, but be cared for in the shortest possible time.

Establishment of Ford service stations therefore started years back but under the remarkable demand for Ford cars, particularly during the last few years with sales running close to 2,000,000 annually, it has been necessary to extend this organization and to do it quickly. How well this has been accomplished is seen in company records which show that since 1923, when Ford dealers totaled a little more than 9,000, the number has been increased to 9,800. But in addition to this the authorized Ford Service stations have been increased more than 100 per cent in the last two years and at present there are 32,000 such stations throughout the country.

The gains was by far the best seen this year and ended with a score of 2 to 2, only after darkness made further playing impossible.

Angst pitching for the Odd Fellows and Peterson for the Legion, allowed few hits, the pitching being very effective on both sides. Double plays were frequent and spectators were given plenty of thrills. Hall at second for the Odd Fellows, obtained nine put-outs, seven on fly balls.

Cook with gas.

RIFFIAN ATTACKS ARE SAID FAILURE

FEZ, July 1.—Violent Riffian attacks upon French outposts have been beaten off with very great enemy losses, states a French communique today. Riffian forces composed largely of regulars were ordered to take the heights of the upper Leben group of outposts at all costs and with threats of punishment if the offensive failed.

Camp cook stoves. Zigler-Fee Hdq. Co.

J. C. PENNEY COMPANY GOES ON GROWING.

The growth and expansion of the institution of J. C. Penney company stores goes on, apparently without the slightest thought of halting. Manager W. H. Strawn, of the local store, has just announced that the organization is opening 105 additional stores this year, the majority of which will be in the east. Three new states will be entered. — Massachusetts, Maine and New Hampshire. By the time the fatted turkey is prepared for the Thanksgiving day dinner, the company expects to have 674 stores in operation in 44 states. Only Rhode Island, Vermont, Delaware and Florida will then remain outside the J. C. Penney company fold.

Latimer's Arsenal Load eight-een cents per pound at Stearns and Chenoweth, Oakland, Ore.

The New CHRYSLER FOUR

Walter P. Chrysler's Latest Achievement

Now Ready!



Coach \$1045 F. O. B. Detroit, tax extra. Four-wheel hydraulic brakes optional. Body by Fisher.



Touring Car \$895 F. O. B. Detroit, tax extra. Four-wheel hydraulic brakes optional.



Sedan \$1095 F. O. B. Detroit, tax extra. Four-wheel hydraulic brakes optional. Body by Fisher.



Club Coupe \$995 F. O. B. Detroit, tax extra. Four-wheel hydraulic brakes optional. Body by Fisher.

Walter P. Chrysler's full conception of what a four-cylinder car should be has now become a reality.

\$895
Touring Car
F.O.B. Detroit, Tax Extra

Mr. Chrysler announces the new Chrysler Four, companion car to the Chrysler Six. It is here, ready for your inspection.

Whether you are a car owner or not, by all means see this new Chrysler creation. Ride in it. Get to know the latest Chrysler achievement which the master car builder identifies with his own name.

It will amaze you, for it is our firm conviction that the new Chrysler Four represents a better and finer combination of power, speed, fuel mileage and charm of appearance than any other four in the world today.

The wonderful riding qualities of the new Chrysler Four cannot

be described. You must experience them to know what an advance has been made in the four-cylinder field. It is enough to say that a ride will amaze and delight you.

And when you ride you'll notice the absolute quietness of the four-cylinder engine, you'll find no rumble or tremors in the body of the car.

Here is a car you can truly drive all day without fatigue. It is hardly ever necessary to shift gears, except for starting from a dead stop. When shifting is necessary it is made clean and noiselessly by the matched transmission gears and easy clutch action.

There has never been the like of the new Chrysler Four at anywhere near its price. Be prepared for a great revelation.

J. W. MICHAEL MOTOR CO.
515 N. Jackson St. Phone 350

Far ahead in power, speed, fuel mileage, beauty; in safety, ease and complete and perfect roadability.

First car of its price with the option of hydraulic four-wheel brakes at slight extra cost.

Delivers 38.5 horse-power—83 per cent more power certainty and performance than its official rating.

Positive full force-feed lubrication, giving far more efficient lubrication with no increase in oil consumption.

Unusually sturdy, rugged frame.

JUNE IS ANOTHER RECORD BREAKER

June is another record-breaking month for Hudson and Essex cars, with business good and public demand exceedingly active, according to Roy Catching, local Hudson-Essex dealer.

"This will prove the sixth successive month in which all previous totals of Hudson and Essex business are surpassed," said Mr. Catching. "Starting with January of this year, Hudson-Essex started in the habit of breaking records. In each month since then it has bettered all former marks."

"In so doing, Hudson-Essex has become the largest and most popular line of six cylinder cars which this or any other year ever knew. The more than 100,000 cars which have been made and sold this first six months of 1923 would be in fact a most handsome output for an entire year. But the public demand for the cars which has called for this volume, is on the increase and still greater Hudson-Essex marks may be looked for in the last half of the year.

"The reasons behind this extraordinary record are of vital interest. There is no one single feature of Hudson-Essex construction on which public interest has centered; but there is an all-around standard of well balanced value which we considered unmatched elsewhere — and apparently the public agrees with us.

"The question of delivering cars is a most serious one. We are actually unhappy when business is so active that owners cannot

obtain cars as quickly as they want them. We realize that when a man wants a motor car, he wants it at once, and we bend every possible effort to accommodate him, even when there is a country-wide shortage such as we have seen this spring.

"With this feeling on our part, and with the Hudson-Essex plant working night and day, we are making every effort to deliver cars promptly. This is not always possible, but we do make every effort. It would help a great deal if motorists would place their orders a little time ahead of the day they actually want it. That would avoid disappointments."

SERVICE SCHOOLS FOR CHEVROLET

The Chevrolet Motor Company expanding its policy of assuring long years of driving satisfaction through proper service, has added three more units to its chain of service schools.

There are now ten schools in various parts of the country, each in charge of two highly skilled instructors. It is axiomatic that there always is one right way and several wrong ways of doing anything. The Chevrolet instructors teach that right way. Their classes are small—not more than six or eight men—to permit of individual attention. Each week the ten schools return to the service organization between 60 and 80 graduate mechanics whose specialized knowledge of the car and its servicing equipment eliminates the element of chance and guesswork.

"Improper fitting of a mbor

part causes expensive damage to any automobile," declares C. B. Baldwin, director of Chevrolet parts and service department. "But when a man leaves one of our schools, he is a precision mechanic. He does not guess; he knows. He has knowledge of the Chevrolet mechanism unobtainable in any other way."

The seven original service schools were established last summer at each of the Chevrolet assembly plants in the United States located at the following cities: Flint, Mich.; Tarrytown, N. Y.; Buffalo, N. Y.; Norwood, O.; St. Louis, Mo.; Janesville, Wis.; and Oakland, California. The success of this group resulted recently in the establishment of the three additional schools at Dallas, Texas; Denver, Colo. and Portland, Ore., for service men in territory geographically remote from the assembly plant schools.

A chief instructor travels constantly from one school to another. In the schools are Chevrolet chassis, used motors, gears, axle and transmission assemblies upon which the students work with Chevrolet precision equipment. Often a motor is intentionally disabled and then placed in perfect order.

The students come from the service department of the 3,400 direct dealers and the many associate dealers. The intensive course lasts one week. The shop foreman predominates, but many subordinate automobile mechanics also attend the schools. Only Chevrolet men are accepted as students.

Another angle in the work of giving the owner the ultimate in driving satisfaction is the service promotion department, also under Mr. Baldwin. This department sends experts to suggest improvements in shop practice and arrangement that patrons may obtain maximum speed and accuracy in servicing.

JOE KIRKWOOD IS PLAYING FINE GAME

GLEN EAGLES, Scotland, July 1.—Joe Kirkwood, professional golfer from the United States used his woods and irons with fine precision today and returned a 73 for the second qualifying round of the Glen Eagles thousand guineas tournament. His aggregate of 133 probably will be good enough to qualify.

SARFF'S Auto Wrecking House

329 N. Main St.

Parts for most all makes and models of cars at a big saving to you.

Come in and see us. Old cars bought for wrecking.

Phone 553

ODD FELLOWS AND LEGION PLAY TIE GAME, SCORE 2-2

A tie game, stopped by darkness in the 9th inning, was played last night between the teams of the American Legion and the Odd Fellows of the Twilight League.

The game was by far the best seen this year and ended with a score of 2 to 2, only after darkness made further playing impossible.

Angst pitching for the Odd Fellows and Peterson for the Legion, allowed few hits, the pitching being very effective on both sides. Double plays were frequent and spectators were given plenty of thrills. Hall at second for the Odd Fellows, obtained nine put-outs, seven on fly balls.

Cook with gas.

RIFFIAN ATTACKS ARE SAID FAILURE

FEZ, July 1.—Violent Riffian attacks upon French outposts have been beaten off with very great enemy losses, states a French communique today. Riffian forces composed largely of regulars were ordered to take the heights of the upper Leben group of outposts at all costs and with threats of punishment if the offensive failed.

Camp cook stoves. Zigler-Fee Hdq. Co.

J. C. PENNEY COMPANY GOES ON GROWING.

The growth and expansion of the institution of J. C. Penney company stores goes on, apparently without the slightest thought of halting. Manager W. H. Strawn, of the local store, has just announced that the organization is opening 105 additional stores this year, the majority of which will be in the east. Three new states will be entered. — Massachusetts, Maine and New Hampshire. By the time the fatted turkey is prepared for the Thanksgiving day dinner, the company expects to have 674 stores in operation in 44 states. Only Rhode Island, Vermont, Delaware and Florida will then remain outside the J. C. Penney company fold.

Latimer's Arsenal Load eight-een cents per pound at Stearns and Chenoweth, Oakland, Ore.

LOOK WELL TO THE OIL CONNECTIONS

Trouble in the oil pump on the automobile engine is something like the bite of the tar-tar fly—it is infrequent, but when it comes it is sure death.

When the automobile leaves the factory, it is in perfect condition. Every bearing and bolt, every nut and screw is properly tightened up. A few months of use, however means a few months of vibration which loosens up the car generally. A certain amount of this is desirable on a new car, but after it has gone too far, the car should be taken to a garage with orders

to tighten it up.

Now, the garage men will do this perfectly ninety-nine times out of a hundred. The hundredth time they will overlook the oil pump, which is hidden and perhaps difficult to get at. The owner drives away, and sooner or later sees the heat indicator on the radiator cap registering serious overheating. If he stops at once, and if he finds the trouble in the oil pump, he has been saved a vast deal of money. Oil pumps are not to be trifled with. Sometimes the oil indicator on the instrument board will indicate the trouble, but always the heat indicator, if obeyed, will help you out.

Heat with gas.



Pleasure

AND

Commercial Cars

ED MARSH MOTOR CO.

Sales and Service

Oak and Pine

Phone 446

Special Monthly Day Storage Rate

for Business and Professional Mens' Cars

A car left on the street is subject to theft, accident and weather.

Avoid Any Chance—Park Your Car at the ROSEBURG GARAGE

Phone 408