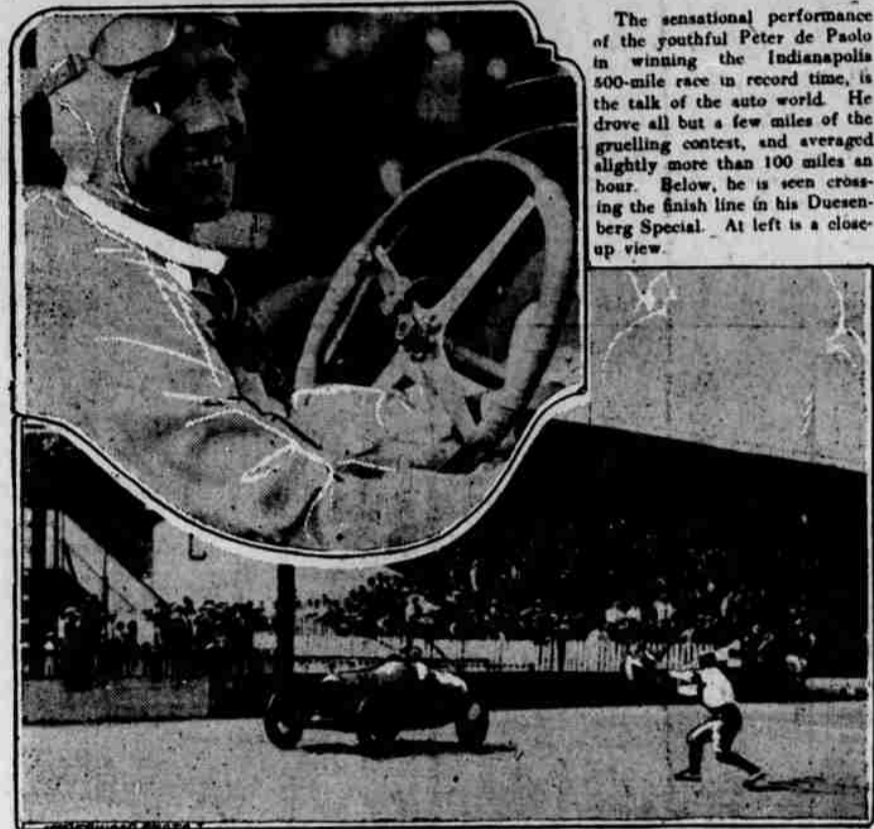


AUTOMOBILE SECTION

De Paolo's Indianapolis Victory Auto Sensation



The sensational performance of the youthful Peter de Paolo in winning the Indianapolis 500-mile race in record time, is the talk of the auto world. He drove all but a few miles of the grueling contest, and averaged slightly more than 100 miles an hour. Below, he is seen crossing the finish line in his Duesenberg Special. At left is a close-up view.

OREGON NEWS organized 30 days after that and promoters announce. Salem's \$600,000 linen mill will be ready to operate within nine or ten months from that time, the For quick results use News Review classified ads. Pages 125.

STAR COUPSTER IS A DELIGHT

OAKLAND, Cal., June 9.—Immediate approval has been given the new Star Coupster by the motoring public. Placed on display practically simultaneously by Star car dealers all over the west, this newest addition to the popular line of Star cars has created a demand that cannot be supplied by the Durant Motor Company of California's factory here for several days.

Consensus of opinion expressed by dealers in the organization is that the Coupster will prove one of the most favored types of motor cars being manufactured today. At a low price, it combines the roadster and coupe in a unique construction that makes for light weight, sturdiness and an attractive appearance. It is built on the famous 1925 chassis, with the "Million Dollar Motor." It is an entirely new type of closed-open car. Many features are incorporated in its construction, including a protruding top that acts as a visor, a one piece windshield, natural finish wood wheels and balloon tires, as well as many other details that add to attractiveness and utility. Much of the demand for this new model has come from professional people and salesmen, who see in the Coupster a car that can be used for business and pleasure with no changing of equipment, and one that can be made immediately an open roadster, or a closed coupe.

Factory officials state that greater effort will be concentrated on production of this car, but that the demand for the present cannot be supplied. Dealers have been urged strongly to place their orders for the Coupster.

transfer of several thousand men to River Rouge when the motor assembly and crankshaft departments were moved there. Along with the steady increase in employment in Detroit, due to greater production demands, there have been corresponding increases at domestic assembly plants until the employment rolls for these now show close to 44,000 employees.

GREAT NUMBER OF CARS ARE STOLEN

"American inventive genius can surely find some way to cut down the number of stolen automobiles," said Walter P. Chrysler, President and Chairman of the Board of Directors of the Maxwell and Chrysler Motor Corporations, recently. "The activities of automobile thieves were nearly 50 per cent greater in 1924 than they were in 1923 and more than 100 per cent greater than they were in 1918. In 28 cities there were stolen in 1924, 57,771 motor vehicles. Of this number, 47,484 were recovered. Seventeen per cent of the total number stolen were not recovered. There should be a way to mark a car in such a manner that it can be identified easily. That mark should be counterfeited proof if inventive genius can make it so. It should be so placed on the car that it cannot be removed. The theft of automobiles is a crime vast in its proportions. The Buick has made famous indicates

record of 1923 which was before number of cars stolen increases from year to year. Now there probably will be no way to check the theft of cars entirely but surely there is some way to cut down the number of cars stolen. The cars stolen last year were valued between \$100,000,000 and \$125,000,000. That sum must be cut down.

A VALVE-IN-HEAD MOTOR WINS RACE

For the 13th consecutive year a racing car powered by a Valve-in-Head motor has won the annual Memorial Day races at Indianapolis, the classic of the world. Yesterday, as in past years, this type of motor has proved it possessed the greatest power and the greatest speed. Because of its unvarying success on the winning cars, the valve-in-head racing engine has come to be universally accepted for all such speed classics. It is a matter of mere record that Buick engineers were the first to recognize the superiority of the valve-in-head engine," explains E. T. Strong, general manager of the Buick Motor Co., and Buick has concentrated on the valve-in-head since 1904. There are more than 1,000,000 Buick valve-in-head cars in use today. That racers use the type of engine Buick has made famous indicates

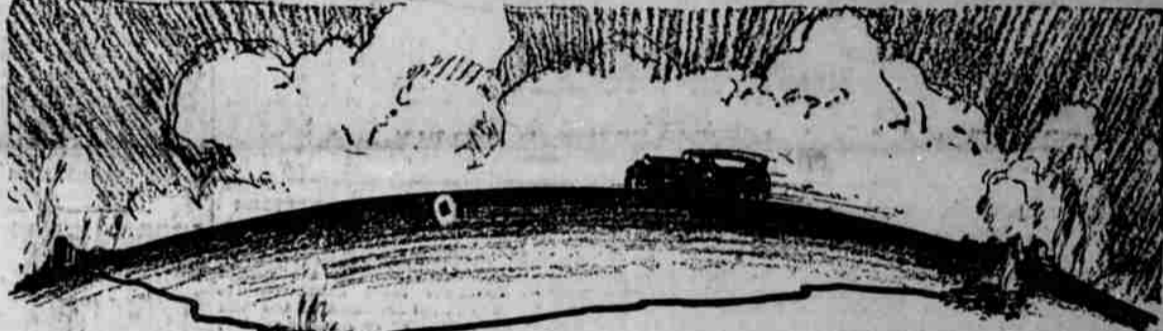
their knowledge of its speed, power and stamina; the records of races won by this type of motor at Indianapolis and elsewhere simply justify their judgment. "It is interesting to note that Buick, early in the industry demonstrated the superior power and speed of the valve-in-head engine on the speedway. A Buick car won races at Indianapolis, at the time when the annual event covered 250 miles. In fact, until 14 years ago, when Buick withdrew from entering cars in racing events, Buick made numerous records on various tracks throughout the country."

AUTO PRODUCTION IS TO CONTINUE

High automobile production will continue through the second half of 1925 it is expected by R. H. Grant, sales manager of the Chevrolet Motor company, who has spent three months of the current year visiting in direct contact with Chevrolet dealers. His travels have taken him to most of the large cities and more than half the states. "Demand for cars, which even before this time last year was beginning to slacken, still remains strong," said Mr. Grant. "The sales peaks and depressions of former years are beginning to flatten out. The automobile has become a year round product, particularly since the closed car grew to such favor. Seasonable variations in demand

are becoming less marked. "No one section predominates as a present or prospective market for automobiles. Sales throughout the entire country reveal a gratifying steadiness and uniformity of demand. And improvement of the agricultural situation, particularly in the southwest where the drought has broken, indicates that thousands of farmer-purchasers will help sustain the demand during the latter part of the year. "It is not improbable that demand will increase slightly in the near future and then remain unchanged for some time, still at a comparatively high level. This possibility, however, will have slight effect upon production, especially among the large companies.

"Production of the more popular cars during recent months has been unusual to demand, with the result that manufacturers have been accumulating a reserve of unfilled orders which they can meet only by steadily building automobiles. This is a favorable and healthy condition for any business. It is a guarantee against abrupt production variations. Also, it benefits the dealers because immediate delivery of cars to waiting purchasers permits a rapid turnover of capital. "The race of the Chevrolet unfilled order list against record production strides augurs well for future sales. Chevrolet went into May with 35,582 unfilled orders. In spite of a large production schedule the amount of reserve orders was diminished but slightly, due to the number of new orders received."



An Entirely New Kind of Motor Car Travel

Changing our Transportation Habits

We predict that within a month after we have delivered your Chrysler Six all your ideas of travel will be changed—revolutionized. Roadability is one of the Chrysler's most remarkable features. It clings to the road as though it really weighed as much as two tons. You'll drive in town or country all day without fatigue because of its easier riding qualities which efficient Watson stabilators have made still more remarkable by the elimination of rebound shock on even the roughest highways. You'll drive always with the greatest possible safety because Chrysler-Lockheed self-equalizing hydraulic four-wheel brakes give you perfect control. You'll find yourself freed of motor worries by the Purolator, which automatically and continuously filters all dirt out of the oil in your crank-case as you drive; by the efficient air-cleaner which keeps all dust and dirt out of your carburetor and engine. We make one more prediction. After you have once had a ride in this car you'll always think of better transportation in terms of Chrysler Six. That ride is waiting your convenience.

J. W. Michael Motor Company 515 N. Jackson St. Phone 350 CHRYSLER SIX

DODGE BROTHERS SPECIAL TOURING CAR

Half the pleasure of buying a motor car rests in the conviction that you have exercised a sensible choice. That pleasure is shared by every Dodge Brothers purchaser—not alone at the hour of purchase but ever afterward. His good judgment is confirmed by everything that he continues to hear about the car, and everything that it does.

Five Balloon Tires \$985 f. o. b. Detroit, \$1175 delivered

J. O. NEWLAND & SON Dodge Brothers Dealers ROSEBURG, ORE. PHONE 454



NEW OIL SHIPS ARE LAUNCHED

Marking distinct advances in the company's refined and lubricating oil business on the coast, the Union Oil Company of California has just launched two new vessels. The larger ship, which was christened the "Redline", was launched at Oakland, and will go into the Sacramento and San Joaquin river trade. At Los Angeles Harbor the most modern oil barge yet constructed at the port was named the "Coronado" and will deliver Union non-detonating gasoline and other products of the company to the multitude of small craft which make their headquarters at San Diego Harbor, to which the "Coronado" will be attached.

Both vessels, while relatively small, are of the latest design and most thoroughly equipped examples of their type on the Pacific Coast. The "Redline", a shallow draft, twin screw vessel, is specially constructed for use in the river territory of Central California. It has a draft of eight feet six inches when fully loaded; a capacity of 150,000 gallons, in addition to fifteen tons of package goods, and a speed of nine knots. It is 175 feet long. There are practically no places along the Sacramento and San Joaquin rivers where the "Redline" cannot make a delivery. The motor equipment consists of two 165 horse power four cylinder, four cycle Diesel engines. The vessel was sponsored by Mrs. T. A. Hayes, wife of the assistant to the executive vice-president at San Francisco.

FORD EMPLOYES TOTAL 161,000

The Ford organization is now employing more than 161,000 persons in its various activities throughout the United States, according to the latest employment figures. This is a record for the industry. The largest increase has come, as might be expected, in the Detroit area where the Ford Motor Company's big manufacturing plants are located. Here close to 14,500 have been added to the employment list since March 1. The big majority of workers are employed, of course, at the Highland Park and River Rouge plants. The River Rouge now has 52,800 on its payroll a record for that plant. Highland Park still leads all plants with 55,300 employees, though this number is considerably lower than the peak employment