

AUTOMOBILE NEWS

The Chevrolet Motor

Has Always Been Famous for its Power Economy and Dependability

ASK ANY OWNER

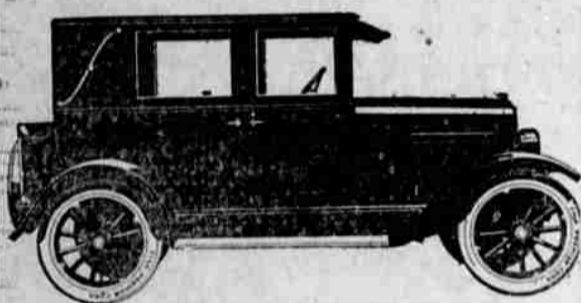
The 1925 Models Pay Tribute to This Famous Power Plant

for Economical Transportation

SEE CHEVROLET FIRST

Oak and Pine Ed Marsh Motor Co. Phone 446

OVERLAND Coupe-Sedan



Come in and see this car. The lowest priced closed car in the world with doors front and rear.

Changes from comfortable four passenger car to a good spring bed in five minutes.

Comes complete with speedometer, trunk, straight side cord tires and extra rim and delivers to you for

\$759.00

The ideal car for small families or for campers.

Liberal Terms

WELLS & CHASE

OVERLAND 6 SEDAN IS NEW DEPARTURE

The newest addition to the Overland line of automobiles, the two-door six-cylinder Sedan, made its appearance this week in Roseburg and has been in daily demonstration from the show rooms of the Wells and Chase company, on North Jackson street. This is the companion car to the four-

door sedan which was exhibited at the automobile show and sells in Roseburg at \$1175. Demonstrations are open to anyone.

The two-door Overland Sedan in the six-cylinder model is finished in a blue duco. The general appearance of the body denotes low lung chassis construction and room for all five occupants. While as is the custom with two-door sedans, the front seat is divided, it is so constructed that the division is scarcely apparent when the seats in place and the occupants of the front seat ride as though on one unbroken cross seat construction. Access may be had to the rear seat without disturbing the occupants of the front seat, this being possible because of the width of the doors which are hung on four hinges.

Reports from the factory indicate that this model is already far over sold all over the country and production is rapidly being stepped up to 200 completed cars a day.

In addition to the demonstrations now being made in the Overland six, similar demonstrations are also being made in the Willys-Knight four and in the Willys-Knight six-cylinder models.

WHY WALK?

When you can get a Chevrolet bug for \$25 at

SARFF'S Auto Wrecking House

329 N. Main St.

That will take you there and bring you back. Also the place to buy parts for your car

Phone 553

BARGAINS

In all kinds of Auto Accessories until they are sold out.

We want to reduce our stock before we move into our new location. As high as 50 per cent off on some accessories.

Umpqua Battery Station 312 N. Jackson St., Roseburg, Or.

SOME FEATURES OF NEW CHEVROLETS

Smooth motor car operation is one of the most desirable qualities in any automobile today because of the extensive and constant use to which the average car is put on both short and long trips.

The thousands who have purchased the new Chevrolet report that the driving of this car requires little physical effort, due in great measure to the perfected single plate dry disc clutch.

This new type clutch not only starts the car smoothly and operates with only a light pedal pressure, but has such large contact surface that it delivers all the power all the time. It requires no lubrication.

To improve the riding qualities, the new Chevrolet has been equipped with new semi-elliptic springs. They are chrome vanadium steel, the rear springs being 54 inches long and the front springs 26 inches long.

Both front and rear axles are now and have been greatly strengthened. The front axle has been strengthened and redesigned to accommodate the semi-elliptic springs. The rear axle is entirely new and has a one-piece banjo type housing similar in construction to that used in the more expensive cars.

The already famous Chevrolet motor has been refined and improved in many ways, such as a heavier crankshaft with larger connecting rod bearings; longer and larger center main bearings; shorter intake manifold bringing the carburetor closer to the cylinders, insuring better carburetion and easier starting; rocker arms and valves completely enclosed.

The improved oiling system together with larger bearing surfaces tends to increase the life of the motor materially. The shorter intake manifold not only makes for better carburetion and easier starting, but also for smoother operation, due to the better distribution of gas to the cylinders.

The instrument board has been refined in design and appearance.

CAR SHORTAGE IS ALREADY AT HAND

PORTLAND.—"One of the big motor car manufacturers predicts that we are going to have a spring shortage of motor cars. I can beat that prediction; there is now a shortage," said the manager of the Portland Motor Car company distributor for Hudson and Essex in the Oregon territory.

"Spring has come on us all suddenly. In the last few days the mass of orders which people have been putting off has descended on us. The registration of cars will amply bear out this statement. All the uncertainties about the motor taxes and registrations—all the hand-saws and bad weather—are now past, and for those lines of cars which deserve public patronage the spring rush is on. Motorists who want prompt deliveries of popular cars should take notice.

"Now there are serious causes of motor car shortages. To bring about a shortage is to shut down the factories and let the demand pile up. Some concerns have done that. But that isn't the reason for the shortage in Hudson and Essex. Probably the busiest spot in Detroit right now is the big Hudson-Exess plant, with many of its departments running two shifts a day and still others three shifts.

"This night-and-day activity follows a winter program of the largest business the plant has ever known. There is a shortage of Hudson and Essex cars simply because the most energetic efforts have not succeeded in making as many as the public wanted."

Studebaker's remarkable record of leadership was not confined to last year alone. For four consecutive years Studebaker has been first in the sale of six-cylinder cars in California, according to statistics compiled by Motor Registration News and by the California Motor Vehicle Department, which have just been issued.

RECORD SHOWS LEAD IN SIXES

During these four years a grand total of 42,614 Studebakers have been sold in California. The second highest six-cylinder make sold 34,131 cars, including several thousand four-cylinder cars. It being impossible to segregate their four and sixes for the years 1922 and 1921 as no such segregations were recorded at that time.

The fact that Studebaker last year sold more six-cylinder cars than any other make is still fresh in the memories of California motorists. Studebaker led with 10,043 registrations, against 9,149 six-cylinder sales of the next highest six-cylinder make.

In 1923, the contrast was drawn even more sharply. Studebaker led with 13,561 sales in California, against 9,537 six-cylinder car sales on the part of the "runner-up."

The figures for 1922 read: 10,144 six-cylinder car sales for Studebaker, and 8,448 for the second highest make, including their four-cylinder cars as well as sixes. The record for 1921 shows 8,240 Studebaker sixes sold against 5,997 sixes and four by the next highest make manufacturing six-cylinder cars. These figures are taken from the records of Motor Registration News, and from those of the California Motor Vehicle Department.

"Any Studebaker owner will tell you why," said W. A. Burr, local dealer, when asked to comment on the significance of Studebaker's undisputed leadership in six-cylinder sales for four consecutive years.

"Studebaker has established beyond any question their superior reliability and endurance—their lasting qualities.

"Today Studebaker is building better cars than ever before—with an improved motor and chassis, more power, handsomer lines, with refinements and improvements too numerous to mention."

Active Glands Gave Napoleon Fighting Force

ACCORDING to a noted scientist, who has analyzed the action of the glands, Napoleon, one of the greatest fighters of all history, owed his courage and fighting force to large and extremely active adrenal glands.

Not only have the glands an important influence on the mind and character of the individual, but they also largely control health, energy and vitality, and it is by maintaining the normal functioning of the glands that we may combat sickness and ill health, according to eminent scientists and physicians of this country and Europe.

Glaxogen, the new scientific gland tonic, which is presented in convenient tablet form for men and for women, provides a simple method of taking glandular treatment. Accept no substitutes. Insist on genuine Glaxogen, the original gland tonic. Chapman's Pharmacy will supply you.

RADIO PROGRAMS

From Pacific Coast Stations

Features for Thursday, March 26
KFSG—Angelus Temple, Los Angeles—275.1 meters—10:30 a. m., radio bible school; 3:30 p. m., organ recital; 7:30 p. m., auditorium service; 9:15 p. m., studio program, sacred music by Angelus Temple choir; 10 p. m., organ recital.

KPO—Hale Brothers, Inc., San Francisco—428.3 meters—7 a. m., setting-up exercises; 10:30 a. m., news bulletin; 10:40 a. m., "What's on at the Theaters?" 1 p. m., Steiger's orchestra; 4:30 p. m., Steiger's orchestra; 5:30 p. m., children's hour; 7 p. m., Steiger's orchestra; 8 p. m., organ recital; 9 p. m., vocal program; 10 p. m., Gene James orchestra.

KXN—The Express, Los Angeles—337 meters—1 p. m., talk on "Care of Children; 6:30 p. m., travelogue; 6:30 p. m., Zeiger's orchestra; 7:30 p. m., popular business talk; 10 p. m., Abe Lyman's orchestra; 11 p. m., program by University of California, Southern Branch students.

KGW—The Oregonian, Portland—491.5 meters—12:30 p. m., luncheon concert by Rose City Trio; 5 p. m., children's program; 8 p. m., Oregonian Concert orchestra; 10 p. m., Strollers Orchestra.

KFIK—Earle C. Anthony, Inc., Los Angeles—5 p. m., hour of news bulletins; 6:45 p. m., radio-tutorial period; Y. M. C. A. program; 7 p. m., Hawaiian Quartet; 7:30 p. m., musical program; 8 p. m., special feature program; 9 p. m., Aeolian Trio; 10 p. m., Examiner program.

KGO—General Electric Company, Oakland—351 meters—At 10:45 a. m., classroom instruction by Oakland public schools; 11:30 a. m., luncheon concert; 4 p. m., La Ferrara's orchestra; 7:15 radio golf lesson; 8 p. m., "Pierre of the Plains," drama in four acts by KGO Players; Arion Trio; 10 p. m., Halstead's dance orchestra.

KHJ—The Times, Los Angeles—495.2 meters—10 a. m., class in broadcasting; 12:30 p. m., program of news items and music; 2:30 p. m., matinee musicale; 6 p. m., Hickman's concert orchestra; 6:33 p. m., children's program; 10 p. m., Hickman's dance orchestra; 11 p. m., Lost Angels with Majestic Six orchestra.

Features for Friday, March 27.
KHJ—The Times, Los Angeles—495.2 meters—12:30 p. m., luncheon concert; 2:30 p. m., matinee musicale; 6 p. m., Hickman's orchestra; 6:30 p. m., children's orchestra; 7:30 p. m., travelogue; 10 p. m., Hickman's dance orchestra.

KGO—General Electric Company, Oakland—351 meters—11:30 a. m., luncheon concert; 3 p. m., studio musical program and speaker; 4 p. m., La Ferrara's orchestra; silent Night.

KFI—Earle C. Anthony, Inc., Los Angeles—467 meters—5 p. m., hour of news bulletins; 6:45 p. m., radio-tutorial period; 7 p. m., organ recital; 7 p. m., Examiner program; 9 p. m., Herald program; 10 p. m., Myra Belle Vickers and her pupils in musical program.

KGW—The Oregonian, Portland—491.5 meters—12:30 p. m., luncheon concert by Rose City Trio; 5 p. m., children's program; 6 p. m., dinner concert; 8 p. m., lecture sponsored by University of Oregon Extension division; 10:30 p. m., How Ours.

KXN—The Express, Los Angeles—337 meters—11:30 a. m., talk for women; 1 p. m., garden talk; 4 p. m., music appreciation talk; 8 p. m., West Coast Theaters program; 11 p. m., Abe Lyman's dance orchestra; midnight Night Hawks from Warlitzer Studios.

KPO—Hale Brothers, Inc., San Francisco—428.3 meters—7 a. m., setting-up exercises; 10 a. m., chat for housewives; 10:30 a. m., news bulletins; 10:40 a. m., "What's on at the Theaters?" 12:45 p. m., Commonwealth Club luncheon addresses; 1 p. m., Steiger's orchestra; 4:30 p. m., Steiger's orchestra; 8 p. m., Cleveland Six orchestra.

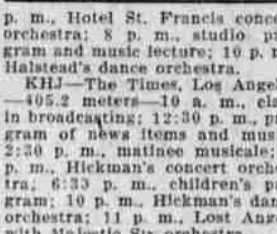
KFSG—Angelus Temple, Los Angeles—275.1 meters—10:30 a. m., radio bible school; sunshine hour; 3:30 p. m., organ recital; 7:30 p. m., auditorium service, divine healing, sermon and special music.

KPO—Hale Brothers, Inc., San Francisco—428.3 meters—7 a. m., daily setting-up exercises; 10 a. m., chat for housewives; 10:30 a. m., news bulletins; 10:40 a. m., "What's on at the Theaters?" 1 p. m., Steiger's orchestra; 2:30 p. m., Gene James' orchestra; 6:30 p. m., garden talk; 6:30 p. m., "What's on at the Theaters?" 8 p. m., Fairmont dance orchestra.

KGW—The Oregonian, Portland—491.5 meters—12:30 p. m., luncheon concert by Rose City Trio; 10 p. m., Colburn's Melody Mews Instrumental Solos.

BAL-SA-ME-A

for CHRONIC COUGHS Chapman's Drug Store



Read the Classified ads. in The News-Review. They mean dollars to you.



Note how clear the water is after cooking Fontana's Macaroni, Spaghetti, or Egg Noodles. That proves the absence of unpleasant starchiness. It is removed by the exclusive Fontana process.

Fontana's

Macaroni Spaghetti Egg Noodles

Seek Banker



E. A. WICKHAM

A systematic search is being carried on in Minneapolis, Minn., for E. A. Wickham, millionaire bank president and financier of Iowa, who, relatives fear, has been abducted and is being held for ransom. Wickham is head of two banks and several contracting firms, besides a railroad and electric company.

To Germany



DR. J. G. SCHURMAN

Dr. Jacob Gould Schurman, former president of Cornell University, and present Minister to China, has been selected by President Coolidge as Ambassador to Germany, succeeding Alanson B. Houghton, now envoy to Great Britain.

INDIANS WILL TRY TO PREVENT WHITES HUNTING ON LAND

KLAMATH FALLS, Ore., Mar. 25.—Angered at what they term a "miscarriage of justice," in the Leonard Moore and Ed Purcell case, a movement is under way among Indians of the Klamath reservation to deny all white people the privilege of fishing, hunting or trapping on reservation ground according to authentic advice received here today.

A special meeting of the tribal council will probably be called the latter part of this week or the first part of next to consider the question, according to Charles S. Hood, one of the leaders of the movement.

The tribal council will be asked to issue an order forbidding white people to fish in any of the

streams on the reservation, to hunt bear, ducks, deer or any other wild animal or to trap fur bearing animals on the reservation. That the council will look favorably upon the reprisal measure is confidently expected by Mr. Hood, who, with William Crawford, of Chilcoota, has interviewed a number of tribal councilmen on the matter.

The case which has aroused the ire of the Indians was the conviction of Leonard Moore and Ed Purcell on the charge of shooting elk—an animal which is protected by the state law. Last month, the two Indian boys were arrested and two dead elk taken as evidence to be used in the trial.

If it is so good why haven't we heard of it before? You are hearing of it now. Call phone 133. Or order one loaf of GRIMM BROS. MILK BREAD.

SPECIAL
DRY SLAB WOOD
\$3.25 Per Tier
This Price Holds Until April 1st Only
DENN-GERRETSEN CO.
Phone 128 231 N. Main St.

Service and Quality

These are the two big features incorporated into our dealings with patrons. Our store is no farther away than your telephone. It is our pleasure to get your order and fill it precisely as if you came in person and inspected the groceries, and then we send it to you and guarantee safe delivery—all without any extra cost. You'll appreciate the Service and the Groceries

PICKENS, BROTHERS

Perkins Bldg. Phone 68

Mill Work That Satisfies

Get our price on your mill work before buying elsewhere.

OUR PRICE MEANS QUALITY

Roseburg Lumber & Mfg. Co.

POPULARITY

Means Service and Satisfied Customers

A real personal interest in the wants of each customer is our aim. Our increasing business is ample evidence that our service and reasonable prices are appreciated by the public.

Walk in our new Jackson St. entrance and inspect our remodeled dining room.

Good Meals 30c and Up.

Open for Business from 5 a. m. to 12 p. m.

The DOUGLAS GRILL

W. R. WARNER, PROP.

COUPON Good for New ENLARGED DICTIONARY

The News-Review

Old dictionaries should be discarded, as recent activities have brought additional words into our language, and the publishers had to discard their old printing plates. Here is the newly compiled dictionary—larger and more complete than any similar one—enlarged vocabulary—all the new words and new special features—now ready for every reader.

EASY FOR YOU TO GET

Three of these coupons, presented or mailed to this newspaper with a nominal sum, to cover cost of handling, packing, clerk hire, distribution, etc., amounting to only 98 Cents

Mail Orders If by mail, include cents postage up to 10 cents; 15 cents up to 20 cents; 20 cents up to 30 cents; 30 cents up to 40 cents; 40 cents up to 50 cents; 50 cents up to 60 cents; 60 cents up to 70 cents; 70 cents up to 80 cents; 80 cents up to 90 cents; 90 cents up to 1.00.

Without Further Expense or Obligation—Send Money Back if Not Satisfied.
Your Old Dictionary is Now Out of Date
This is the ideal book for solving Cross Word Puzzles