

AUTOMOBILE NEWS

for Economical Transportation

SEE



FIRST

ED MARSH MOTOR COMPANY

—SALES AND SERVICE—

Oak & Pine

Phone 446

40,000 CHEVROLETS MARCH SCHEDULE

With a scheduled production of 40,000 cars for March, the Chevrolet Motor company is gaining increased momentum in the building of the new Chevrolet and the working force is being added to in each of the 12 manufacturing and assembly plants throughout the country.

W. S. Knudsen, president and general manager, estimates that within the next month and a half the actual factory working force will have been augmented approximately 40 per cent.

"Whereas the sale of the new Chevrolet is pushing us to our capacity to fill orders, we are not expanding our working force any more quickly than we can absorb them," explains Mr. Knudsen. "When going into production with a new model made from new tools, it is important that the entire job be co-ordinated carefully, so as to give the high grade result expected by the buying public now as never before.

"Happily, however, expansion of production in our Chevrolet

factory centers is not so difficult as might be supposed, because those of our former experienced workers who may have been out of employment during a short period are kept on hand and these men are recalled to their old positions as they are needed. In this way the majority of trained automotive workers are trained, leaving the training of a minimum number necessary."

STAR CAR MOVES SMALL BUILDING

OAKLAND, Cal., Feb. 25.—Transportation troubles in the life of Vilgo A. Peterson, of the Pinnacles, in San Benito county, Calif., mean very little. His Star touring car he uses for everything from pushing balky mules up the road, to road grading.

Last week, he found a new use for his touring car. It became necessary for Peterson to remove a small powder house, complete, to one ridge of a little valley in which it rested. The distance was a mile, and the average gradient up was between twelve and fifteen percent, with one pitch of eight-

teen percent. The house, eight by ten feet, was torn down by Peterson and an assistant. This was a Saturday morning. By four o'clock the same afternoon, the same house, constructed of the same lumber, was at the summit of the hill.

It was carried up the steep slope on several trips, the Star touring car dragging behind it a roughly constructed sled and making five trips. All of the lumber, and one good-sized counter were carried up by the Star. Simple as the feat may seem, it taxed the pulling power of the Star to overcome the resistance of the sled and the steep grade up the hill.

DEBATE TEAMS WILL COMPETE ON FRIDAY

Roseburg and Walker high schools will debate again on Friday of this week in an effort to dispose of the tie resulting from the meeting last week in which the affirmative teams of both schools came off successful. The two teams are debating for the Southern Willamette district championship. Roseburg's negative team will go to Walker, and the Walker negative team will come here. The school which wins will debate at Eugene the following Tuesday.

REEDSPORT MAN WOUNDS FIANCEE

MARSHFIELD, Ore., Feb. 24.—Pete Kaludis of Reedport shot and seriously wounded Mrs. Charles Page, a widow of Bunker Hill, while taking steps to obtain a marriage license at Coquille late today. Later he said he intended to kill himself, but the cartridge jammed Kaludis and Mrs. Page went to the county clerk's office to get the license, but Kaludis did not have a medical certificate. They went to Dr. Richmond's office and he passed the examination. Dr. Richmond left them in his office while he went to a notary public to certify the certificate. Kaludis either went insane or misunderstood Dr. Richmond and thought he had rejected him.

He remarked that if he could not get married the woman could not either, then pulled the gun and shot her. Mrs. Page probably will recover.

BILL TILDEN TO FACE NEW KINKS IN TENNIS WORLD

(Associated Press Licensed Wire.) NEW YORK, Feb. 25.—William T. Tilden, King of nearly all he has surveyed in the tennis world over the past five years, occupies a position where varied outside interests may affect his 1925 campaign. Although victorious in his fight to remove any question of professionalism from playwriting, Tilden still faces some kinks in his status as a result of newspaper work, in accordance with which he is devoting more time to motion pictures and the drama.

However, Tilden is expected not only to attempt to carry off the American tennis crown for the sixth straight year, but again form a main link in the Davis cup defense. In the thick of another fray, the tall Philadelphian will be a favorite to emerge at the top, in spite of such obstacles in his path as the veteran William M. Johnston and Vincent Richards, who looms as Tilden's most dangerous rival. Richards gave the champion his stiffest battle in 1924, and if he improves as much this year as he did last, may reach the peak. These three again dominate the field, though a formidable crop of young talent is coming forward rapidly. Tilden has fought his way to the top and held it against all attacks by a remarkable combination of concentration, brilliance and tireless physique. He has an uncanny ability to pull himself out of the most threatening situations, few kinner students of the game have ever trod the courts than the 31 year old titl holder.

Tilden first won the national singles crown in 1920, after twice being runner-up. Since then he has held nearly every important title here and abroad including world's championship victories at Wimbledon in 1921 and 1922. He and Johnston brought the Davis cup, emblem of team supremacy, back from Australia in 1920. In this competition, Tilden has never lost a singles match.

Serve it for your luncheon and watch it vanish the GRIMM BROS. MILK BREAD, Phone 133.

DINING ROOM AT THE ROSEBURG OPENS

The Roseburg Hotel Dining room, which has been closed for several months, was re-opened today by L. M. Howard, proprietor of the Ureola Lunch restaurant. Mr. Howard has closed his eating place at the corner of Cass and Sherman streets, and will devote his attention to the dining room at the hotel.

RITOLA STARS IN-STEAD OF NURMI

(Associated Press Licensed Wire.) NEW YORK, Feb. 25.—Three world records were established last night at Madison Square Garden but Paavo Nurmi, flower of Finland, had none of them.

To Willie Ritola went the honors for the Finnish American athletic star took upon his shoulders the burden that Nurmi used to have borne, the five thousand meter event, and established new times for the full distance and for three miles.

Jole Ray of Chicago set a mark of his own in the 1,900 meter run, a distance raced indoors for the first time. Ray conquered Willie Goodwin of the New York Athletic Club.

Nurmi ran two miles for a medical showing, his 9:14 1-5, appearing slow against previous performances. The Finn was about 17 seconds behind the record he established here ten days ago when he ran the distance under nine minutes.

One of the most interesting contests of the meet which furnished funds for the building of the cathedral of St. John the Divine, was that between Phil Granville, Canadian walker, and Ugo Frigerio of Italy, Olympic champion. Granville won, calling upon a

seemingly inexhaustible reserve whenever the Italian threatened throughout the mile and and a half.

The new records follow: Distance, three miles; time, 13:56 1-5; made by Ritola; former time 14:01 2-5; held by Ritola. Distance, 5,000 meters; time 14:23 1-5; made by Ritola; former time 14:31; held by Ritola. Distance, 1,900 meters; time 2:29 2-3, made by Ray; no former.

NEW YORK, Feb. 25.—The names of Paavo Nurmi and Willie Ritola, both natives of Finland, although the latter makes his home in the United States and both members of the Finnish team in the Olympic games, may well be linked to provide the greatest two man track machine of all time. Ritola ran three miles last night in the fastest time a human ever had covered the distance, under 14 minutes. Ten days previously Nurmi had done the same with two miles, under nine minutes.

WILLYS-OVERLAND FINE MOTOR CARS



World's Lowest Priced Four-Door ALL-STEEL Sedan

Revolutionary Advance in Driving Vision

\$715

59,173 people visited the Willys-Overland showroom during Auto Show week in New York.

Overland's adoption of all-steel bodies is admittedly one of the most important advances ever made in the low-priced field. Sales of the new Overland all-steel Sedan are literally pyramiding. People are keenly aware of the advantages of steel construction—particularly the greatly increased range of driving vision.

Besides its all-steel body, the Overland Sedan gives you bigger power . . . patented Triplex Springs . . . stronger axles . . . bigger propeller shaft . . . balanced crankshaft . . . bigger brakes . . . disc-type clutch . . . simpler lubrication . . . sliding gear transmission. A very inexpensive car to buy—and a very economical car to run. Extremely easy terms.

Coupe Sedan \$585

World's Lowest Priced Closed Car with Doors Front and Rear

OVERLAND ALL-STEEL SEDAN

WELLS & CHASE

DEALERS
Roseburg, Oregon
Phone 264-R

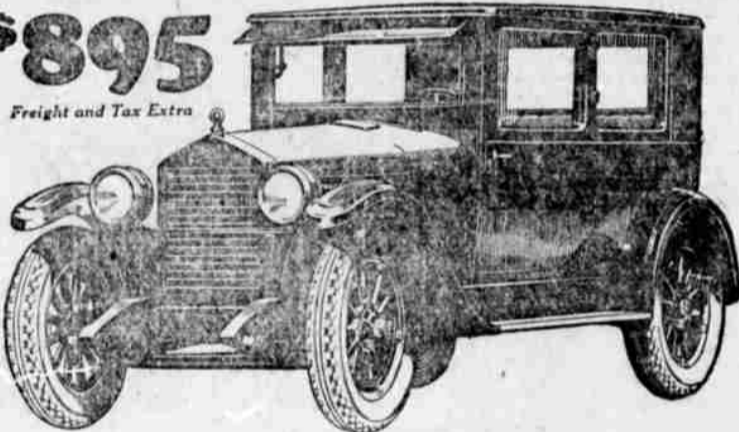
BERT WELLS
410 E. Lane Street

F. W. CHASE,
628 S. Stephens St.

This Essex-6-Coach

\$895

Freight and Tax Extra



None Can Copy Its Chief Value

The Chassis is Patented

Essex is a totally different type. It gives results no other car ever gave.

Low price, without disappointment in looks or reliability.

Economy without sacrifice of performance.

Stability and highest roadability without unnecessary weight.

The riding ease of large, costly cars. The handling ease of a bicycle. Utter simplicity in design.

The lowest maintenance cost, we believe, of any car in the world.

Two of every three Essex buyers come to it from those who formerly owned cars bought chiefly for their low first price.

Just as the Coach body and Coach name have been extensively copied, even by costliest cars, so must future mechanical design seek to approximate the results Essex gives.

But the patents which make the Super-Six the most enduring, smoothest motor and give it all advantages, also prevent any from copying its chassis.

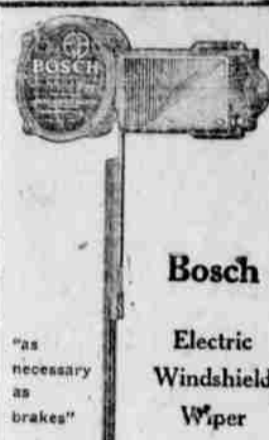
Surely you cannot be satisfied with less than Essex offers. Its cost is but little more than cars of the lowest price.

ROY CATCHING MOTOR COMPANY

Show Room and Service Station Across From City Hall

Oak and Main Streets—Phone 428

Wrecking Car—General Auto Repairing



Don't Drive Blindfolded!

Speed is Constant
Costs Nothing to Run
Quiet—Powerful

L. G. Devaney

Phone 84 406 W. Cass

Are you going to fix up that old car, if so

SARFF'S Auto Wrecking House

329 N. Main St.

Can furnish the parts at a big saving to you if you come and let us make you an offer on the car for wrecking.

Phone 553

GUARANTEED USED CARS

Overland Touring—Good Tires and Battery \$100.00

Chevrolet Touring—Looks good & runs good \$150.00

Huisk Six Touring—Good condition \$300.00

Ford 4-Door Sedan \$525.00

All in A-1 condition. New Tires and lots of extras.

Essex 4 Coach \$675.00

Rebuilt and retinished in Uco.

Roy Catching Motor Co.

Across from City Hall
Roseburg

Let's Try To Explain This Amazing Success

The greatest value on the market—that's the public opinion of the Chrysler, because of the record volume of business it enjoyed in its first year; because of the enthusiasm of its owners and its wonderful records of performance.

The advantages the Chrysler Six offers—advantages hitherto unobtainable—in performance, riding qualities, style and economy have proved irresistible. They have inspired an amazing chorus of public approval the like of which has never before been known in the industry.

It is not alone dashing performance, flashing speed, delightful riding qualities of a surprising nature that have captured the public. Every man who has ever ridden in the Chrysler and any other automobile keenly appreciates what Chrysler engineers have accomplished in the production of superlative performance combined with unusual economy, of riding ease and roominess with compact design and the conservation of space, size and weight.

You will be as eager and as enthusiastic as any to contribute to Chrysler's growing success once you have driven this new type of car. Don't miss a demonstration in the amazing Chrysler.

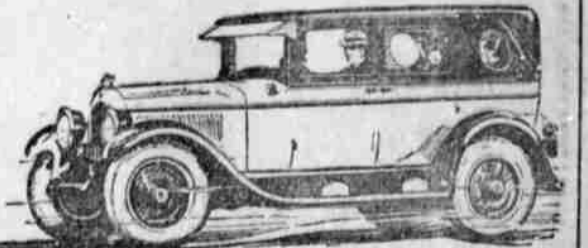
J. W. MICHAEL MOTOR COMPANY

315 NORTH JACKSON ST., ROSEBURG

PHONE 350

The Touring Car, \$1395; The Phaeton, \$1495; The Roadster, \$1625; The Sedan, \$1825; The Royal Coupe, \$1895; The Brougham, \$1965; The Imperial, \$2065; The Crown-Imperial, \$2195. All prices f. o. b. Detroit subject to current government tax.

We are pleased to extend the convenience of time-payments. Ask about Chrysler's attractive plan. Dealers everywhere.



CHRYSLER SIX