

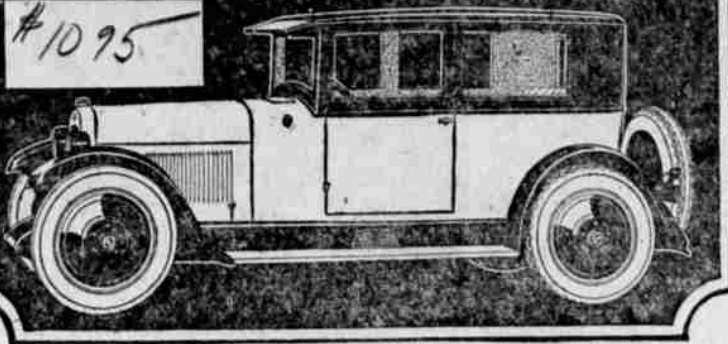
AUTOMOBILE NEWS

NASH

Nash Leads the World in Motor Car Value

Special Six Sedan
Five Passengers

#1095



112 1/2-inch Wheelbase

A Brand of Performance That Will Amaze You

S-P-E-E-D! 60 flashing miles per hour when you want it. That's the result of the new-type engineering C. W. Nash has incorporated in the design of this perfected valve-in-head Special Six motor. **R-O-A-D-A-B-I-L-I-T-Y!** Extremely low-sprung and beautifully balanced, this car seems literally to drive closer to the road at high speed. The price, \$1225 f. o. b. factory, includes 4-wheel brakes, full balloon tires, and 5 disc wheels at no extra cost.

SPECIAL SIX SERIES—ADVANCED SIX SERIES
Models range from \$1095 to \$2290, f. o. b. factory

L. R. CHAMBERS, Nash Dealer
Highway Service Garage Roseburg, Oregon

SMALL POINTS ARE NOT OVERLOOKED

Thousands of dollars are spent to make a minor improvement—one that a layman cannot detect, but one that will add to his enjoyment as an automobile owner.

The "Little Things," Some of these "little things" that the average automobile owner hardly notices are described by Ed Marsh, Chevrolet dealer who has just introduced and is now showing newly designed Chevrolet models.

Former Chevrolet owners, who have purchased the new model, undoubtedly have wondered why the engineers changed the gasoline tank opening from the right to the left side, said Marsh. "The real reason is that when driving with a full tank on a crowded road the right side of the car is lowest and gasoline splashes through the air vent, causing a loss and spoiling the appearance of the car."

Previously it was difficult for an automobile owner to synchronize both brakes so that they would give equal pressure. Engineers devised a simple equalizing device that eliminated this difficulty and greatly enhanced the ease of brake adjustments.

The location of the rubber weatherstrip between the two halves of the windshield frequently caused annoyance by interfering with the driver's vision. This was corrected by the invention of the VV one-piece windshield for closed cars and by putting the division on open car windshields well below the level of the eyes. Another simple change has been the curving upward of the instrument board at the sides. This, to the casual glance, has only given a more graceful line, but its real purpose is to afford considerably more leg room in the front compartment.

These improvements are just minor affairs that come unheralded. There are, of course, the more important improvements such as the pressure gun lubricating system that has banished the dirty grease cups from the chassis; the disc clutch, Dupco finish and many engine refinements that have added greatly to the comfort of the automobile owner.

from the seventy-pound cylinder block to the quarter-sauce switch key.

A special department employing eighteen skilled engravers is continually busy making the stamp dies, while scores of other workers are engaged throughout the Ford factories in marking the parts.

In a majority of instances it has been found possible to incorporate the operation with the manufacturing processes. Spring leaves are marked as the steel is rolled at the mills. Drop-forged and cold-headed steel parts are marked by stencils cut into dies, some of the parts, like the crankshaft, piston ring and rear axle ring gear—because of the sequence of operations and precision required—are stamped in separate operations.

In the engraving department an average of 750 stamps and stencils of the Ford trade-mark in various sizes are made daily.

This trade-mark on genuine Ford parts not only assures the car owner products that represent twenty-one years of study, research and work in developing the strongest materials and the most efficient design, but also stands as a safeguard against the counterfeit, states C. A. Lockwood, manager of Ford sales sales agency in Roseburg.

TRAFFIC COP BUSY

Traffic Cop Wescott put in yesterday afternoon checking up on violators of the city parking ordinance. He found a number of the city's business men leaving their cars on the main streets over the 30-minute limit and tagged their machines, ordering their appearance in the city court. No fines were imposed by City Recorder Whipple but each violator was required to contribute to the Salvation Army box which is kept in the city hall for such purposes, and as a result of the cop's activities the Salvation Army will have sufficient money to do a good deal of charity work.

Don't forget the tractor school at Wharton Bros. tomorrow, Thursday, Feb. 5th, 10 a. m. to 4 p. m.

We are increasing our stock all the time

SARFF'S Auto Wrecking House
329 N. Main St.

When giving that car of yours an overhauling remember we have the parts to replace those that are worn out or broken, and at half price.

Phone 553

TRADE MARKING OWN INDUSTRY

The name Ford goes on 2,651,000 Ford car and truck parts every day as a protection to car owners against counterfeit parts.

Trade-marking of Ford parts with the word in the now familiar script began in 1914, when spurious parts first appeared. This trade-marking was extended in 1916, when the markets were flooded with the counterfeits and today putting the name Ford on genuine parts has become something of an industry itself.

Different standard parts into which the trade-mark is worked during manufacture now total 351.

LETTERS FROM THE PEOPLE

THE SCHOOL ELECTION TO BE HELD SATURDAY

Editor News-Review: Is to give each honest voter a chance after a very careful consideration to express by your vote where you think the new high school building should be erected.

Erected; say that word means all in this case, doesn't it? And it means responsibility for every voter so let us vote intelligently. We don't want the responsibility on our shoulders for all time of placing the high school building on an inferior site. Let us not be narrow in this decision. We are to choose between two sites. Now let us reason together for the good of our what? Tourists that pass this way? No; for a monumental improvement to the city of Roseburg! No; well shall we place this building which is entirely for our young men and women to finish their education in a central location that is entirely inadequate for a school of this sort

and even bad for the school, that stands now adjacent to the same site now considered with its narrowness, noisy trucks and traffic and think of that railroad and its volume of noise. Say really are we considering locating a school building of any culture in such a place? Let us think for a moment of the other site and let us not be unreasonable but consider it from all angles as well. The West Roseburg site which is two blocks distance from the west end of the Oak street bridge on nice level land not cut up with streets. All the acreage required to place the building or buildings as the case may be later on; back from the street as we would naturally like to see them and have plenty of room for recreation purposes and for the many automobiles if we so choose to ride. Also garage housing for those machines which should be with perhaps small fee for their use. This site is just west of the newly improved Laurewood Addition which houses a great number of our best people which is a building restricted district; and the surrounding vacant property will naturally be improved with a good up to date style of homes. But some say it's too far. If that is the way you feel it might be well for you to take a

two or three mile walk each morning before commencing your studies. Let us remember also that the building under consideration is a school building for and constructed by the school district No. 4, and not to gratify the selfish desires of any business interests by locating it in some inferior central noisy location which is anyway entirely too small. But let's build it in a place that we will be proud of and for our best young people whom we are proud of the coming power of the nation. The west side is a good site and we might find some other as good. But let's have a site first and entirely for the benefit of the students that will use it.
C. D. MAYNARD.

SAYS GIANT GREED OPPOSES AMENDMENT

Editor News-Review: Just a word to our servants, agents, representatives of the people in our legislature. Children are dear to mothers, fathers, the W. C. T. U., the parent-teachers' associations, welfare workers, and all guardians of childhood. Our democracy broadens and deepens since women are factors in government. It is an old saying that "a woman will have the last word anyhow." That tendency is noted in our expanding democracy—the referendum goes to the source of rightful power to rule.

If our representatives cannot conscientiously or otherwise support the child labor amendment, we appeal from them to the public. Let the people decide, whose right, in the last analysis, is to decide, to rule.

Had this amendment been entitled what it really is, "A children's protective educational amendment," it would not have encountered so much opposition from giant greed. But the white post of the leader conscience and of Christian sentiment, was dubbed a labor bouquet, the same which doesn't smell so sweet to the profiteering process of sordid business.

It is a significant fact, and I now refer to it regretfully, that the self-same states that stood for slavery in the dark days of our national existence, now stand against the children's protective educational amendment.

It is too unfair to the representatives whom we elect—to the president and congress—in assume that they will do the wrong thing; and too fair to a non-elective tribunal that serves for life, to assume that it does the right thing by setting at naught the will of the people duly expressed. Are we fair to ourselves, and to the cause of self-government?
A. W. FREDERICKSON.

Have you something to sell, to trade, to give away. Use News-Review columns.

ATWATER KENT RADIO

THINK WHAT IS BACK OF IT

EVERY customer who buys an ATWATER KENT set from us becomes a real radio fan. ATWATER KENT quality and performance plus our installation of the set assure perfect radio satisfaction.

Drop in today, and let us demonstrate ATWATER KENT Radio to you. You will be delighted at its remarkable ease of operation, its volume, distance, and clear, natural reception.



Willard Service Station
122 S. Stephens Phone 136

THEATRES

ANTLERS THEATRE. The scenes taken aboard the trans-Atlantic liner in the production, "In Every Woman's Life", the First National picture now being shown at the Antlers Theatre, were taken on sets designed after the plans of the S. S. Olympic, of the Red Star line. The cabins, staterooms, hallways, decks, and bridge were reproduced in perfect

detail for the many dramatic scenes between Cherbourg and New York.

Liberty Theatre. Something of an idea of the bigness and general scope of Douglas Fairbanks' latest photoplay sensation, "Douglas Fairbanks in Robin Hood," may be gathered from the summary of facts given herewith.

For this last world in Fairbanks' super-features, which is coming to the Liberty theatre today and tomorrow under a United Artists release, a host of engineers, architects, artists and artisans labored for months before ever a camera lens was opened.

Twenty-two experts delved and stilled in the necessary research work for accurate designing of the colossal sets. Libraries the world over were ransacked by these experts for au-

thoritative facts in ascertaining the historical data that all might be presented truthfully to the period.

Fiction Library, upstairs, Masonic Temple. Over thirty-five hundred books.

With a complete leased wire service, reaching to all parts of Oregon, the News-Review publishes its 4200 subscribers the last

ATTENTION ELKS

Past Exalted Rulers' night Thursday, Feb. 5, Lunch at 6 p. m. Fine program.
CARL E. WIMBERLY, Chairman.

ELECTRICAL SERVICE

Authorized by the car manufacturer

Chevrolet, Buick, Oakland, Maxwell, Overland, Star, Durant, Chrysler and many others.

Bring in and have your car registered. Most complete stock of electrical parts and service equipment in Southern Oregon.

W. R. BROWN
Automotive Electric Service
122 South Stephens St.

Used Ford Cars!

From \$25.00 Up
All Kinds and Sizes.

Used Ford Coupe, new paint	\$285.00
Used Ford Roadster, del. box on back	\$225.00
Used Dodge Touring	\$100.00
Used Dodge Delivery	\$90.00
Ford Delivery, new body.	

For a Few Days Only

30x3 1-2 Goodyear Tire and Tube	\$7.50
30x3 1-2 Goodyear Cords	\$11.00
32x4 Fabric Tires	\$10.00

A can of Tube repair free with each tire.
Genuine 13-plate Ford Battery \$16.50
C. A. Lockwood Motor Co.
Authorized Ford Sales and Service

Used Cars

Walking is out of Fashion these days. And why shouldn't it be with cars so serviceable and cheap.

See our List of Car Bargains—autos that you can depend upon to give service when you want it.

Rapp Brothers
Cass and Pine Phone 371