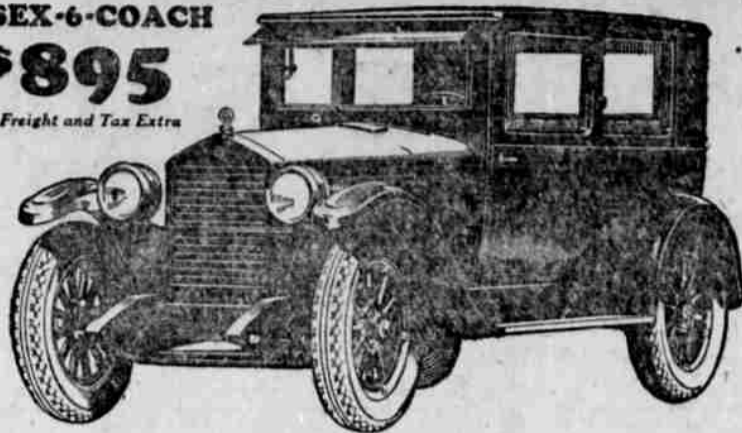


AUTOMOBILE NEWS

ESSEX-6-COACH

\$895

Freight and Tax Extra



Its Greatest Values Cannot Be Copied

The Chassis Is Patented

As its Coach Body has changed the whole trend to closed cars

So Essex Chassis likewise forecasts the mechanical design of the future

Essex provides stability without unnecessary weight. It has economy without sacrifice of performance.

It is low priced without disappointment in looks or reliability.

It is more than up-to-date in design. It is in advance of any car with which its price can be compared.

It is built on the Super-Six principle, by Hudson workmen in the Hudson shops.

In quality Hudson and Essex are alike. The patents which make the Super-Six the most enduring, smoothest motor and give it all advantages sought in eight cylinders, prevent any from copying its chassis as has been so generally done in copying the Coach body.

ESSEX HOLDS ITS OWN EVERYWHERE

ROY CATCHING MOTOR COMPANY

Show Room and Service Station Across From City Hall

Oak and Main Streets—Phone 438

Wrecking Car—General Auto Repairing

NEW CHEVROLETS ATTRACTIVE CARS

Two new Chevrolet motor cars showing the latest body lines, finish, and mechanical improvements in this well known automobile, were placed on demonstration in this city yesterday by the Ed Marsh Motor company, with sales rooms at Oak and Pine streets. The new Chevrolet comes in five body types—touring, roadster, coach, coup and sedan, and all these models are being shown this week at the New York automobile show. Refinements in design and stream line bodies are features of the new Chevrolet.

A new Chevrolet, with improved body lines which provide for roomier interiors, and with a number of mechanical changes, will be placed on display this week by the Fields Motor Car company, local Chevrolet distributors. The new cars come in five body types: the touring, roadster, coach, coupe and sedan and are being shown for the first time at the New York show. All models have full stream-line bodies, with refinements in design. The improvements include a new and heavier channel steel frame 35 inches longer, with five sturdy cross members and new improvements in the Chevrolet motor, such as heavier crankshaft with larger connecting rod bearings, longer and larger center main bearings, shorter intake manifold, bringing the carburetor closer to the cylinders; insuring better carburetion and easier starting, rocker arms and valves are completely enclosed.

In place of the former enameled steel shell, the new radiator shell is made of airplane metal, which is non-rusting because of the composition of the material used, and has all the beauty of nickel.

The clutch has been changed from a cone type to a perfected single plate, dry disc clutch, which requires no lubrication.

The rear axle is entirely new. The new stamped, one-piece axle housing—known as the banjo type—is similar in design and construction to that used on the most costly cars. New departure ball bearings are used throughout. The front axle has been greatly strengthened and redesigned.

The springs are of the semi-elliptical type, which are longer and provide easy riding. They are of Chrome Vanadium steel, one of the toughest types of steel so far developed. The rear springs are undergoing to improve roadability. Alemite fittings

that of last year. Corn shows a gain of 17 per cent and tobacco about 25 per cent, over last year.

insure positive lubrication, and by the use of bronze bushings the life of the shock bolts is greatly lengthened.

All closed bodies are built by Fisher and have the rounded curves and graceful lines that have come to be associated with all products of this company. They have the "VY" one-piece windshield, with regulator located above the windshield and automatic windshield wiper, controlled from the dash.

There is a dome light in the coach and sedan and a robe rail in the sedan.

The windshield in the open body types has been so changed that the rubber weather-stripping between the upper and lower windshield can in no way interfere with vision.

All bodies are finished in duco, the new and lustrous finish which retains its gloss indefinitely and is practically impervious to damage. Chevrolet is the lowest priced car to introduce duco finish on all its standard body types.

Another innovation, particularly in the low-priced field, is the finishing of all Chevrolet cars in colors. The touring, roadster and coach are finished in a rich, dark blue; the sedan is aquamarine blue with upper panels in black; and the coupe is sage green on the lower panels and hood and black on the upper panels. Fenders on all the models are in black.

In from the rural districts for a short time yesterday were Mr. and Mrs. John Wilson. They reside at Yoncalla and returned home in the afternoon. They were here attending to business matters.

If it's a saw, axe or wedge, try Powell's.

You Get 60 Days

The place where one fellow will take the place of 2 men when it comes to buying a car. Satisfaction guaranteed 50 days on all used cars. Don't fail to ask our price.

Motor Shop Garage



The Star Car Has Always Had

A Semi-Floating Rear Axle

A Single Plate Dry Non-Oiling Clutch.

A Warner Transmission

An Irreversible Worm Steering Gear.

A Six Cross Maintained Frame, Strengthened with the Durant Tubular Backbone, and

Above All a Longer Spring Base Than Any Car In or Under the \$1000 Class.

Buy by Comparison

RAPP BROS.

Phone 371

TREATMENT FOR AN OVERHEATED MOTOR

Steam sizzling from the radiator cap is a sure indication that the engine is overheated and needs attention. At the warning, the car should be stopped and the engine given time to cool. Then proceed slowly and carefully until reaching the garage and then follow this procedure to find and remedy the trouble: Tighten the fan belt. Have carbon cleaned out. See that muffler is not clogged. Drain, flush and refill the radiator. See that valves are timed properly. Drain out old oil and refill with new. Inspect hose connections against leakage. Have carburetor adjusted for right mixture. Then, when driving, be sure that the spark is advanced to the proper point. Adjustment of the spark to contingencies of driving is an important detail in successful motoring.



TRYING TO REPAIR YOUR OWN CAR

is like trying to tailor your own clothes. You can't do it to your satisfaction and you are only wasting time and material. Take your car to the man who has proven that he knows the business of auto repair work.

Hall & Young Garage
631 Winchester St. Phone 523
Roseburg, Ore.

MYSTERY MAN TO BROADCAST VOICE

NORFOLK, Va., Jan. 7.—Radio will be invoked in a novel purpose, when it leaves a radio broadcasting station here today, carrying the voice of Norfolk's "mystery man", who has baffled all other means of establishing

his identity. Found straying near Cape Charles two months ago and now believed to be a victim of aphasia, the individual who will speak over the air has in turn been a charge of immigration authorities, local police and lastly of charity, during fruitless efforts to determine his identity. The most puzzling feature of the case is the man's language, which has led to uncertainty among linguists. Persons interested have arranged to broadcast his voice from station WTAR at six p. m.

With a complete lesson wire service, reaching to all parts of Oregon, the News-Review furnishes its 4200 subscribers the latest news every day.

WHY Buy Used Cars

—As Is—

WE GIVE FIVE DAYS FREE TRIAL WITH 30 DAY GUARANTEE

See Us Before You Buy

OPEN SUNDAYS

For Economical Transportation



Ed Marsh Motor Company

Oak & Pine Phone 446

PROSPERITY JUST AHEAD IN SOUTH

Word has been received from E. T. Strong, general sales manager of the Buick Motor company, who is now in the south, that conditions there indicate a very prosperous year ahead and a material increase in the sale of Buick cars.

"In Tennessee," says Strong, "I find the farm income shows a material gain over last year. The cotton crop will probably reach 350,000 bales compared

with a 228,000 bale crop last year, and although the price is lower than last year, the aggregate income from cotton will be several million dollars more.

"Check transactions in Memphis, which is the banking center, show an increase of about 20 per cent for November over October. Department store purchases in Memphis, Chattanooga, Knoxville and Nashville, are now equal to, or greater than, a year ago. Arkansas has a big cotton crop and the outlook for that state is excellent. The lumber industry of Arkansas is steadily improving and general business conditions would indicate that this state should rank among the best the coming year.

"The Mississippi cotton crop is very big, and as 55 per cent of this states income is from cotton, the prospects are very good.

"Farm income in Georgia shows nearly 50 per cent gain over last year. The cotton crop in the state is nearly double



Business Calls You To Distant Points!

You must have your car in perfect condition for immediate service, because it is necessary that you meet the appointment on time. If the Car is not behaving just right

Better have our Experts Overhaul the Motor STORAGE DAY AND NIGHT SERVICE

C. M. TESTER
Phone 385 131 So. Rose

SARFF'S Auto Wrecking House

329 N. Main St.

The place to buy parts for your car and save money.

Old cars bought for wrecking.

Phone 553

The COACH as Buick builds it

is available on either of two fine Buick chassis. The quality is identical in both Master Coach and Standard Coach. Both bodies are by Fisher. The only difference is in wheelbase and price.

In addition to Buick's two Coach models, there are twenty-three other Buick styles to choose from.

The Master Six Coach The Standard Six Coach
\$1495 \$1295

Prices f. o. b. Buick factories; government tax to be added Ask about the G. M. A. C. Purchase Plan, which provides for Deferred Payments. 9-15-23-AJ

SEE THE BUICK AND RIDE IN IT MOTOR SHOP GARAGE Distributors for Douglas County OREGON

BUICK MOTOR COMPANY FLINT, MICHIGAN

When better automobiles are built, Buick will build them

Prices Slashed On Entire Overland Line

Mr. Willys wires from New York that greatest reduction in price ever made on complete line of low priced cars is just announced by the Willys-Overland Co. See us for particulars.

WELLS & CHASE

628 S. Stephens

410 E. Lane St.