

# AUTOMOBILE NEWS

## What Chrysler Engineers Are doing for Maxwell

The engineering group who share credit for the sweeping success of the good Maxwell, have high reputations to maintain.

You will realize how much that statement means when you remember that these men designed the Chrysler Six.

It is the same group which has built into the good Maxwell, performance worthy of a car three times its price.

If you examine into the basic reasons for such performance, and for Maxwell's economical, care-free service, you discover things like these:

That both the new transmission and new rear axle are strong and rugged enough for a truck.

That the extensive use of fine bearings eliminates friction to such an extent that with one hand you can roll the car on a level floor or street.

That the heavy, perfectly balanced crankshaft floats on a film of oil maintained under force-feed pressure in its oversize bearings—thus reducing wear to the point where there is practically no need for bearing replacement.

That the release or throwout bearing of the new clutch—often a prolific cause of trouble and expense because of poor lubrication—is positively and automatically lubricated from the transmission.

That at all vital points the good Maxwell uses the same kinds of alloy and heat-treated steels employed in the costliest cars.

That in proportion to weight, it is actually stronger than cars costing two, three or even four times as much. That the rear axle drive pinion, which bears the brunt of propelling the car, is rigidly mounted on bearings which preserve permanent alignment and quiet.

That the frame, in addition to its unusual depth of six inches is braced by six stout cross members.

Such superiority in material, in construction, in engineering design, is bringing new thousands to the conviction that the Maxwell is not only a good car, but that it is actually better than anything at anywhere near its price.

## CHRYSLER SETS A NEW RECORD

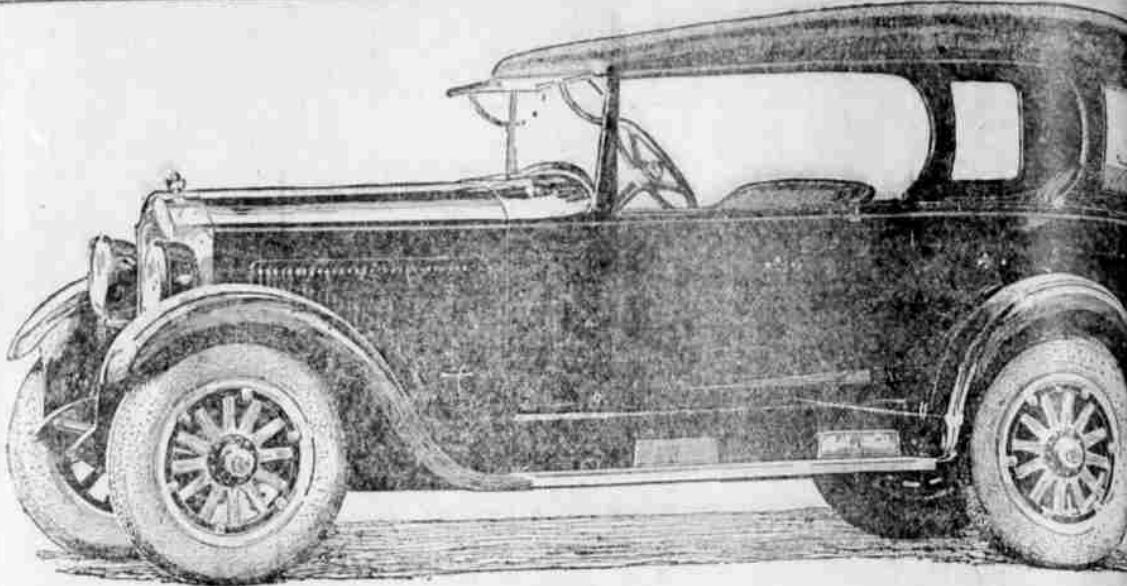
Here's a new wrinkle in demonstration. The West Virginia State Police bought a Chrysler Six following one of the oddest on record.

G. M. Davis, manager of the Tri-Motor Sales Co., Maxwell-Chrysler division of Clarkburg, W. Va., the home town of John W. Davis, Democratic presidential nominee, was in a hurry to reach Fairmont, 25 miles away. He was in such a hurry that his Chrysler did it at night in the rain over slippery roads in 29 minutes.

While running along at 50 miles an hour he noticed a state trooper behind him. "I supposed he was chasing me," he said later, "as there was no one else I could see who needed to be chased for speeding. But I stepped on it."

Some time after I reached Fairmont the trooper rode in. He said he had endeavored to catch me for 15 miles and supposed I must have been at least seven miles ahead of him when I reached Fairmont. The damage was \$50.00, but the trooper was so thoroughly sold by my inadvertent demonstration that the state bought one a few days later. I call it the best arrest for speeding that I have ever received.

The Chrysler is now being used to accomplish what the trooper's motorcycle couldn't do—to catch speeders.



## Have you seen this new car? —It is a closed-open car

A WEEK ago the new Studebaker Special Six DUPLEX-PHAETON was first announced.

Today, countless thousands of people are talking about this entirely new type of car.

One moment it is a closed car—in five seconds it can be transformed into a delightful, airy, open car. But it is always the closed car in deep soft cushions, beautiful fittings and finish and luxurious riding comforts.

When you see it and ride in it you will know why it has made so profound a sensation—you will realize then that it gives you more than the finest open car can ever give you, plus the comfort and protection of the closed car.

And all at the price of an open car!

And this is the new DUPLEX BODY on the famous Special Six Chassis.

Hundreds of thousands of owners all over this country and abroad have given the Studebaker Special Six a name for value, dependability and performance second to no other automobile.

The new Studebaker Special Six retains all the qualities which make great reputation—to these have been added every real improvement which science and owner-service could suggest.

Even, aside from the sensational DUPLEX BODY—the Studebaker Special Six has no superior in value in any built. It was the conscientiousness of Studebaker in planning and the new Special Six to make it just leader—to that end every resource of Studebaker organization has been concentrated.

Even if we had the space we would begin to tell you of the very many and unusual features which insure superiority.

Certainly no words could do justice to its distinctive beauty.

In appearance it is unlike any American car—yet its long, low sweeping lines are conservative, stylish and in beautifully good taste.

Think of the new Studebaker Special Six Duplex-Phaeton as the ultimate in performance in a five-passenger car—think of it as a car matchless in convenience and desirability.

But to appreciate the sparkling beauty of its totally new lines you must see it—know its perfection of operation and performance you must ride in it and do so.

If you have not seen this NEW—come today!

## PROSPERITY SURE TO HIT WEST

"The lean years of the west are to be succeeded by a period of wide-spread prosperity," states H. T. Hodgekins, vice-president and General Sales Manager of the Rollin Motors Co., Cleveland, Ohio, who has recently returned from a comprehensive western trip covering all the important cities in the Dakotas, Montana, California, Oregon, Washington, and up to and including Vancouver.

"Due to most favorable crop and weather conditions, a period of substantial business is rathering such as the west has not seen since 1920 and automotive sales will rise with the rising tide of business."

"Favorable conditions such as the abundant crops in California, for which they are receiving the best prices in years, together with the elimination of the hoof and mouth disease give the reason for increase in sales of Rollin cars, as well as all manufacturers and commodities."

"Wheat, apricots, grapes—practically all of California products, for instance—are now getting big prices, whereas a year ago some of the crops had no market at all. In Montana and Idaho the wheat crops are enabling producers to take up their debts and leaving a large surplus to spend."

"Corn crops in Iowa, Illinois and Missouri are excellent, but better still, prices are high right at the harvest time, assuring an era of sound and substantial business for everybody."

"Livestock prices also show the trend upward."

"The Rollin car is very attractive to European motorists, because it combines the price ad-

## VALUE POINTS—New Special Six:

The New Duplex-Phaeton Body—it solves the closed-open car problem.

Genuine Balloon Tires—20 x 6.20 inches.

New Satin-Lacquer Finish.

Spanish chrome tanned leather upholstery.

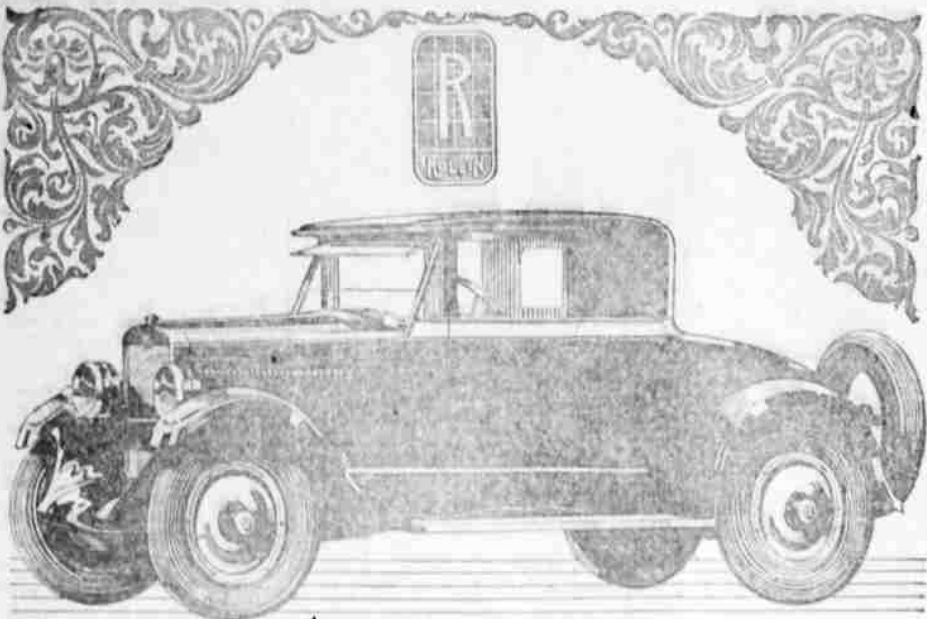
New idea in ease of operation and control.

Vibrationless Engine; force-fed oiling system with new idea in oil supply.

Four-Wheel Hydraulic Brakes optional—totally unlike any other system on American cars. Automatic braking pressure.

## J. W. Michael Motor Company

323 North Main St. Roseburg, Oregon



## Desirable Ability With Remarkable Economy

The Rollin is a remarkable success because it has outstanding, advanced features not incorporated in any other automobile.

It has smooth, quiet and simple power flow at ordinary every-day driving speeds, with quick, sniffling acceleration. It starts in cold as a bicycle, and is a joy to ride on any highway.

With the responsiveness and power of the 4-cylinder car, it has the modern first cost of the Four, together with the new and unexcelled economy of 25 to 30 miles per gallon of gasoline.

Rollin H. White, most progressive among automotive engineers, and designer of famous American cars, studied carefully European designs used for 800 performance.

As a result the Rollin 4-cylinder design, with such features as European type, high compression motor; 4-bearing balanced crankshaft with aluminum alloy reciprocating assembly—freeing the motor from vibration;

Perfect force-feed lubrication; carburetor and manifold advancement; 4-wheel brakes; Balloon tires; and transverse rear springs, has been developed, marking a new era in motor car performance and low operation costs.

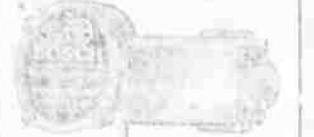
Rollin H. White, designer of the Rollin and countless others!

The Rollin—designed by Rollin White of Cleveland, Ohio—is the most up-to-date car on the market.

## KLECKER, AMORT CO.

227 North Jackson Street Roseburg, Oregon

Typical Car... \$1100... 4-cylinder... \$1150... 6-cylinder... \$1250



Bosch Electric Windshield Wiper

Don't Drive Blindfolded!

L. G. Devaney

## MAY LOSE WIVES

(Associated Press London Wire.) LONDON, Sept. 24.—Many natives of Pondoland, south Africa are likely to lose their wives purchased on extended credit during the last three years because they claim to be unable to complete their payments.

The purchase on credit is not usually allowed among natives, as there is too much inclination to return the wives in lieu of the purchase price, but a matrimonial motorist has been in vogue during the period of borrowing for the death of a missionary chief. This period is now over and natives who obtained wives on credit must pay up or return the women to their parental estates.

A mysterious shortage is reported in cattle and horses, with which such payments are usually made.

Try our Merchants Lunch—11:30 a. m. to 2 p. m. 50c. Palace of Sweden.

## SENATOR EDGE IS VICTOR

(Associated Press London Wire.) NEWARK, N. J., Sept. 24.—United States Senator Edge, decisively defeated Hamilton, C. Koch, republican challenger for the nomination of republican senator in yesterday's primary. Edge had 256 of 272 electors districts were tabulated, the vote was: Edge 256; Koch 156.

Senator Edge's victory was generally considered today as a victory for the so-called liberal elements of the anti-alien league. The fight was a bitter one, with the prohibition question as perhaps the liveli-

## AGGIES PRACTICE IN SECRET

OREGON AGRICULTURAL COLLEGE, Corvallis, Sept. 24.—Dates of Fall field have been ordered closed to spectators by General Paul J. Schuler and secret practice will be the rule till further notice except on special days when the students and general public will be permitted in the stands to watch scholastic practice. Secret practice was decided on this early in the season following the discovery that points from rival colleges had already been on the field trying to get advance "dope" on Schuler's style of play.

## ENGINEER IS KILLED

(Associated Press London Wire.) KALAMAZOO, Mich., Sept. 24.—An eight passenger motor car, when a Michigan passenger train, was wrecked on the skirts of this city at 10 o'clock this morning. Arthur J. Jackson, Michigan State Fireman, Kalamazoo, was among the number of the killed.

## GERMANY IS OPEN

(Associated Press London Wire.) GENEVA, Sept. 24.—The Olympic games at St. Moritz, Holland, and the games were curtailed in order to an article by Joseph Conrath, president of international Olympic committee, which will appear in a number of the Review of the Press.

## PERMANENT MOTOR REPAIRS

are guaranteed by us. When we charge you for repairing your motor we feel as you do that the repairs ought to last under any reasonable driving conditions. Having conscientiously repaired your motor we know our repairs will last. But we know it takes time to be the judge of our efficiency.

Hall & Young Garage N. Winchester St. Phone 133 Roseburg, Ore.

## THIS IS A STUDEBAKER YEAR

In our New Location on Jackson Street W. A. BURR & SON Opposite News-Review Phone 112

## STUDEBAKER

STANDARD SIX 130 in. W. B. 5 H.P. SPECIAL SIX 130 in. W. B. 45 H.P. BIG SIX 137 in. W. B. 5 H.P.

5-Pass. Duplex-Phaeton \$1385 5-Pass. Duplex-Phaeton \$1785 7-Pass. Duplex-Phaeton \$1785

3-Pass. Duplex-Roadster \$1390 3-Pass. Duplex-Roadster \$1745 5-Pass. Coupe \$1745

3-Pass. Coupe-Roadster \$1645 4-Pass. Victoria \$2375 5-Pass. Coupe \$2375

5-Pass. Sedan \$1700 5-Pass. Sedan \$2495 7-Pass. Sedan \$2495

5-Pass. Berline \$1925 5-Pass. Berline \$2565 7-Pass. Berline \$2565