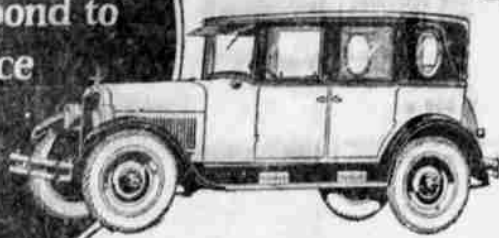


AUTOMOBILE SECTION

New—
created for those
who respond to
Excellence

The Oakland
Landau Sedan
1645
factory



THE new Oakland Six Landau Sedan was created to match the taste and quicken the pulse of those who instinctively prefer excellence.

Here is luxury on four wheels—a light, close-coupled, closed car—easy to drive, easy to park—powerful, handsome, individual—and as clean-cut and debonair as a Derby winner.

Here is exclusive luxury at a very low price for such luxury. There isn't a car in its price group and not a handful among the higher priced cars that offer the smartness and completeness of dress and de-

meanor you will find in the Landau Sedan.

Here is beauty of an exceptional type conceived by Fisher and installed on a chassis that is True Blue to the last bolt and the last nut—

—A True Blue car with spirit and vigor and driving utility that have earned it the right to be called "a year in advance of its field."

Drop in today and ask to see this new Oakland. It is a great deal more than a good looking car. It is one of the world's very finest!

ROADSTER	SPECIAL ROADSTER	LANDAU COUPE	COUPE FOR FOUR
TOURING	SPECIAL TOURING	LANDAU SEDAN	SEDAN

ED MARSH MOTOR CO.

SOUTH ROSE STREET, ROSEBURG, OREGON

Oakland

IMPROVED STAR CAR CLASS PERFECTION

The new Star 1925 Sport Coupe is now being displayed at the Star salesrooms where it is being adjudged the very latest word in distinctive motor car construction in the low-priced field. Fast on the feet of flying gossip goes the word that this luxurious, Flint-gray painted job is positively the most distinguished of all light weight cars, and as a result the crowds are becoming greater every day at the display floors. Officials at the Star Motor Company of California, from President Norman De Vaux down, as well as local Star dealer executives, feel that here is a sensation among low-priced automobiles.

From the standpoint of beauty and compactness, the Sport Coupe in the 1925 Star line is a veritable dream of symmetry and completeness. The body is finished in a Flint-gray with delicate gold stripings. Running gear and custom-built top are done in black throughout, which presents a remarkable harmony with the brilliant solid nickel work of the Star radiator, door handles, barrel head lamps, and axle ends, and also the Flint-gray disc wheels on which are mounted Fisk full balloon tires. Aluminum kick plates are at the sides.

From a mechanical standpoint, the Sport Coupe offers all of the advanced features of the whole 1925 Star line. This means locomotive type, improved four-wheel brakes, which have stood the gruelling tests of thousands of miles since the Spring announcement and which the Star Motor Company backs to the extent that it will challenge any competitor, regardless of size of car, to comparative safety tests. Then there is the new Red Seal Continental vibrationless motor, which at last takes the curse off the low priced field by providing a powerful engine with plenty of stamina and yet without the jarring and bucking that has heretofore been the "bar sinister" to comfort in a light weight automobile.

Among the other 1925 Star mechanical features are the force fed oiling system and the smooth dry disc clutch. Both of these innovations are big selling points because of their guarantee of reliable performance of motor and easy, velvet-like shifting of gears in traffic or on grades. Star, in bringing these features alone to the low-priced field, insures its leadership as the provider of a high grade, quality automobile for the regular low prices.

Those who have ridden in this new Star Coupe remark about the roominess of the three-seater compartment and the comfort of the overstuffed seat. This feature, with the well-known Star springs and genuine, cushion effect balloon tires, makes sure of the most pleasant riding experience a motorist could want. Also, the built-in sun visor, done in black as the top, is a great driving convenience. The windshield is one piece of clear vision glass and is ample insurance against smash-ups because of hindering bars and division lines. Ventilation is also provided for, through a screen at the top of the windshield.

Doors are three feet wide, providing plenty of room for entry and exit. Now bumping, squirming, and squeezing are eliminated when entering or leaving this closed motor car.

On the rear there is the fifth Fisk genuine, full size, balloon tire, mounted on its specially designed disc wheel, with four lugs, as all the others. Five balloons are standard equipment. Close to the passenger compartment, but hidden by clever coachwork, is the luggage compartment ready to take enough baggage for a transcontinental trip for the day's collection of shopping bundles.

Experienced automotive executives unite in saying that this new Star 1925 Sport Coupe far ahead of the times in design, comfort, and the ability to give the maximum of motoring style and pleasure.

factory Reserves.

The day will be made the occasion for a general patriotic demonstration, at which northern Douglas county generally will be represented. The day's period from 2 a. m. to 5 p. m. will be devoted to enrollment and at 5:45 p. m. there will be a free barbeque on Main street, followed by an exhibition drill, at the conclusion of which there will be an appropriate musical and speech-making program at Gibbler's hall.

NEW WINDSHIELD ON OAKLAND BIG BOON

The Oakland Motor Car company has just adopted a new one piece windshield for its four closed models—undoubtedly the most revolutionary advancement in windshield construction since the early days of the automobile industry when motorists used rubber aprons over their laps.

This "V V" type windshield has been evolved by the Fisher Body corporation, which build all Oakland bodies.

The new windshield does not tip to give ventilation, but slides upwards in felt-lined channels, much in the same manner as the side windows of the closed body type of motor car. It is easily and mechanically operated by a crank located above the shield and does not rattle. All the new windshields are fitted with automatic windshield cleaners.

One-half turn of the regulator handle raises the shield from its base one inch, opening a section approximately 45 inches long and one inch high, to outside pressure. The air rushes unobstructedly through this ventilator the entire length of the shield and is conducted into the body, forward and down to the floor. This type of windshield eliminates the cowl ventilator.

If more air is desired, two and one half turns of the regulator handle raises the glass three inches above the instrument board, opening a section approximately 135 square inches, through which the air rushes directly into the driving compartment. Quick ventilation and thorough change of air are obtained by opening one of the doors, or one of the rear windows.

Because this type of windshield has no rubber strip nor parting bar to confuse the vision and strain the eyes, it adds to the comfort of driving. Those who have already driven behind it marvel at the greater visibility afforded, which makes for both comfort and safer driving.

The windshield is water-tight and practically air-tight; easily operated and easily cleaned; besides adding to the clean-cut appearance of the car.

Never Before So much for the Price

It is not only in engineering design—in performance—that the good Maxwell now revolutionizes four-cylinder standards.

Never was there a car which gave the owner so much in fine materials and workmanship for anywhere near the price.

We will gladly go over the chassis and body construction with you, as intensively as you may desire, and you can satisfy yourself on that point.

We will particularly emphasize this fact in every part which wears, or has to do with reliability, the good Maxwell is now actually stronger, pound for pound, than many a car costing four to five times its price.

You can depend upon the good Maxwell to stand up in the toughest, day-after-day going—you can drive it with the same assurance you would feel with a costly car.

Indeed, if road conditions are at all possible, you'll never see a Maxwell stopped. Its brute pulling power seems always able to carry it through.

Perhaps the greatest boon to the good Maxwell owner, however, is the consistently care-free service it gives him, day after day and month after month.

There are a host of mechanical reasons why the good Maxwell saves its owners both trouble and expense.

The fact that the good Maxwell motor is practically vibrationless—that vibration in any event is not transmitted to the body—is another long-life feature.

You should ride in the good Maxwell, now that Chrysler engineers are directing its development, and talk with owners and learn their disinterested opinion of good Maxwell performance and economy.

The Good MAXWELL

Touring Car	\$ 895
Sport Touring	1055
Roadster	885
Club Coupe	1025
Club Sedan	1095
Sedan	1325

All prices f. o. b. Detroit subject to current Government Tax.

We are pleased to extend the convenience of time payments. Ask about Maxwell's attractive plan.



J. W. Michael Motor Company

323 North Main St.

Roseburg, Oregon

RAPP BROTHERS GARAGE



SALES, SERVICE
and PARTS

Convenient Storage by
Day, Night, Week or Month
Cars Washed, Polished,
Greased and Oiled

Note: We have a few good used cars at terms that will surprise you.

Phone 371

ROLLIN 4-WHEEL BRAKES PRAISED

That motorists in larger cities are finding 4-wheel brakes an unexpected aid in overcoming a disagreeable condition brought about by traffic regulations, is reported by the Rollin Motors Co. by purchasers of Rollin cars.

Many cities are adopting ordinances making compulsory a full stop before entering or crossing certain thoroughfares.

Where there are two or three of these close together, motorists find the constant starting and stopping monotonous. With the great deceleration possible with 4-wheel brakes and the fast acceleration of the Rollin, it's drivers are experiencing no great loss of time or effort in fulfilling regulations to the letter.

DEFENSE DAY TO BE OBSERVED AT OAKLAND
Oakland, Oregon, will not be remiss in its duty toward the national Defense Day test, and no difficulty is anticipated in recruiting its quota of 200 citizen soldiers, under the captaincy of Ralston Hibiges, designated commander for Company G, 382nd Infantry Reserves.

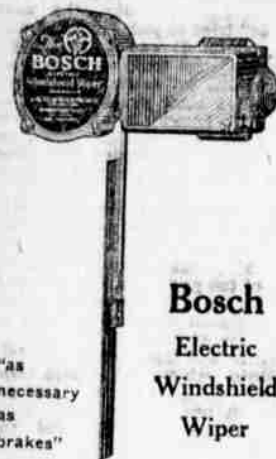
The day will be made the occasion for a general patriotic demonstration, at which northern Douglas county generally will be represented. The day's period from 2 a. m. to 5 p. m. will be devoted to enrollment and at 5:45 p. m. there will be a free barbeque on Main street, followed by an exhibition drill, at the conclusion of which there will be an appropriate musical and speech-making program at Gibbler's hall.

Auto Repairing
U. S. Asbestos Brake Lining
Max-Chry Service

STEPHENS AUTO COMPANY
323 N. Main St.
Phone 582

A Just Accusation
We accuse you of being indifferent to the safeguarding of valuable property if you are risking the repair of your automobile with anyone who is not capable of expert work. Motor knowledge must be up-to-date in every respect. We guarantee satisfaction.

Hall & Young Garage
621 Winchester St. Phone 338
Roseburg



Don't Drive Blindfolded!

Speed is Constant
Costs Nothing to Run
Quiet—Powerful

L. G. Devaney
Phone 84 406 W. Cass



DELCO
FOR FORDS
INSTALLED ON 30 DAYS TRIAL
Try one and see the difference.

W. R. BROWN
Automotive Electric Service
122 South Stephens St.
ROSEBURG, OREGON
Opp. Central Telephone Station

SMOOTH PERFORMANCE

A marked smoothness characterizes the performance of Dodge Brothers Motor Car.

In keeping with the policy of constant improvement, effective measures have been taken to minimize vibration. Applied to the body, engine, clutch, brakes, and other vital units, these refinements add immeasurably to the comfort of travel over boulevards and country roads.

The effect is so pronounced, in fact, that it is entirely fitting to classify smooth performance as one of the outstanding attributes of Dodge Brothers Motor Car.

J. O. NEWLAND & SON

Dealers in Dodge Brothers Motor Cars
ROSEBURG, OREGON

LONG DISTANCE

LET us quote our prices and specify our insurance and hold distance hauling. You will quickly realize how worth your while it will be to call us.

"We Aim to Please"

H. S. FRENCH
TRANSFER AND STORAGE CO.
PHONE 220