

# AUTOMOBILE SECTION

## HUDSON COACH

### On the best Super-Six Chassis ever built

In buying a Hudson Coach you are able to Save \$500 to \$1200

The Hudson Coach will supply your every closed car need at a positive saving of \$500 to \$1200. Once you drive a Hudson you will not likely ever be content with the type of chassis you must accept in other moderate-priced cars.

The new Super-Six Chassis retains all the power, dash and reliability for which everyone knows Hudson. It is even smoother in performance. Starts instantly. Is much more economical in gasoline and oil. Every phase of operation, control and reliability marks it the greatest of all Super-Sixes.

The Hudson is absolutely trustworthy, and in so far as any piece of machinery can be, is free from need of mechanical attention.

In choosing your next car, be sure to see the Hudson Coach and let us demonstrate. It will cost you less, even than many an open car that from a performance standpoint are not at all comparable to Hudson.

## ROY CATCHING

Motor Repairing and Machine Works

East Oak and Main Streets Roseburg, Oregon

Phone 438

## STUDEBAKER ENTRY CLIPS FAST PAGE

INDIANAPOLIS, Ind., May 21.—Earl Cooper, in his new Studebaker Special, is giving the railbirds at the speedway a thrill these days in the early speed trials for the annual international 500-mile race, May 30.

Cracking off five laps at an average speed of 166.3 miles an hour in his first tryout, Cooper demonstrated what a clean pair of heels the little Studebaker Special has when Mayor Shank headed a delegation welcoming the veteran driver.

"The city is yours," said Mayor Shank, when he officially welcomed Cooper. "From all indications this 1924 race will eclipse them all. Every day I am receiving word that caravans are setting out from every corner of the country to arrive in Indianapolis in time for the race. I hope you win. We have to keep the first prize in Indiana."

The mayor was alluding to the fact that Studebaker for seventy-two years has been located in Indiana.

For one thing, the car is in mighty healthy shape, flying over the bricks with the characteristic "feel" that delights Earl Cooper, seasoned veteran of fourteen years on the fastest tracks in the country.

Newspapermen note Cooper's thoughtful, studious, intense mood out at the track. He spends fourteen hours a day with that Studebaker Special, bringing out every possible bit of energy and power.

There is a grim smile on his face as he whirrs past the impromptu clockers near the repair pits. Around and around he goes, testing, spurring, experimenting, hitting up to faster and faster lap performances.

Nursing the Studebaker Special is Earl Cooper's faithful mechanic, Reeves Dutton, widely known for years on the tracks as a shrewd trainer and driver of racing cars. Dutton spends all of his time "tuning up" the Studebaker and you'll see the lights burning in his little shop in the pad-dock most every night.

The car is painted robin egg blue. It bears in gold the numeral "1", because Cooper was the first entry signed up for the 1924 Speedway classic.

Cooper was the winner of the Fresno race in 1918, after two years' retirement in the world of business. He was second in the July 4 race in Kansas City last year, and second in the Beverly Hills meet in 1923. He also finished fourth in the 1915 race at the Indianapolis Speedway, besides winning the road championship in California in 1914.


Pumps and irrigation systems at Wharton Bros.

## HOW TO FIGURE SOLDIERS' BONUS

(Associated Press Leased Wire.)

WASHINGTON, May 21.—Veterans' Bureau actuaries informed members of congress today for the first time that the list of "factors" prepared by them and recently made public for computing the amounts of insurance due under the bonus law took into account the extra 25 per cent of adjusted service compensation allowed by the bill on insurance certificates. This means that a veteran in computing the value of the insurance policy he will receive, simply will multiply his credits at \$1.25 a day for foreign service and \$1.00 a day for home service by his factor, which previously had been made public. The extra 25 per cent is not to be added as heretofore announced. As an example, if the veteran has the maximum amount of home service credit, \$50, the insurance policy would amount to about two and one-half times that amount of \$1,250 according to the age of the veteran.

H. P. Brown, veterans' bureau actuary, explained the table of factors recently made public had been based on value of \$1.25 instead of \$1 as usual and this took into account the extra 25 per cent allowed by the



**ZENITH CARBURETORS**

Increased Efficiency at Lower Cost

L. G. Devaney  
Phone 84 - 405 W. Cass St.

## ATTENTION UMPQUA CHIEFS

Umpqua Chiefs will wear their marching suit at all times during the Strawberry Carnival. At quarter of nine Thursday morning all Umpqua Chiefs will assemble at the armory to take part as a body in the opening of the carnival—marching uniform and hats.

On Friday at quarter to seven in the evening they will assemble in Indian regalia to take part in the evening ceremonies.

All members please take notice and attend promptly.  
GEORGE NEUNER, JR.,  
Chief Umpqua.

bill, and saves a double computation. This will result in lower values for insurance policies all along the line than figured by congress. Brown said, but would make no difference in the estimated total cost of the bill, since all these facts have been taken into consideration by the actuaries of both the veterans' bureau and the treasury department, who figured on the expense.

Sheep branding fluid in red or black at Wharton Bros. It stays on for a year.

## PENDLETON HAS BIG FIRE EARLY TODAY

PENDLETON, May 21.—Two well known landmarks of Pendleton were destroyed by flames of undetermined origin that started about 3 o'clock this morning. The buildings were a big feed barn and blacksmith shop on 111th street, both of them part of the Pendleton of older days. Three automobiles were burned in the blacksmith shop and many tools, while a truck loaded with lumber was destroyed in the feed barn. Some insurance was carried on the shop but the barn was a total loss. The loss is estimated by the local fire department at \$5,000.

Get your courage boquet for the Queen's Ball at the Fern.

## WOMAN CHARGED WITH BEING INTOXICATED

Miss Cyril B. Stephens, of this city, was arrested this morning at Camas Valley by Deputy Sheriff Croy who brought her to Roseburg charged with the crime of being intoxicated on a highway. Miss Stephens was driving to Marshfield in her car and in attempting to drive up to the filling station at Richter's store in Camas Valley, struck and wrecked the gasoline pump. The officers claimed that the woman was intoxicated, and a bottle which had contained wine was found in the car. She was not placed in jail as there are no accommodations for women. She retained Attorney Elbert Herman for her defense and entered a plea of not guilty. Bail was fixed in the sum of \$50.

## BEARER IS GIVEN 5 YEARS IN PEN

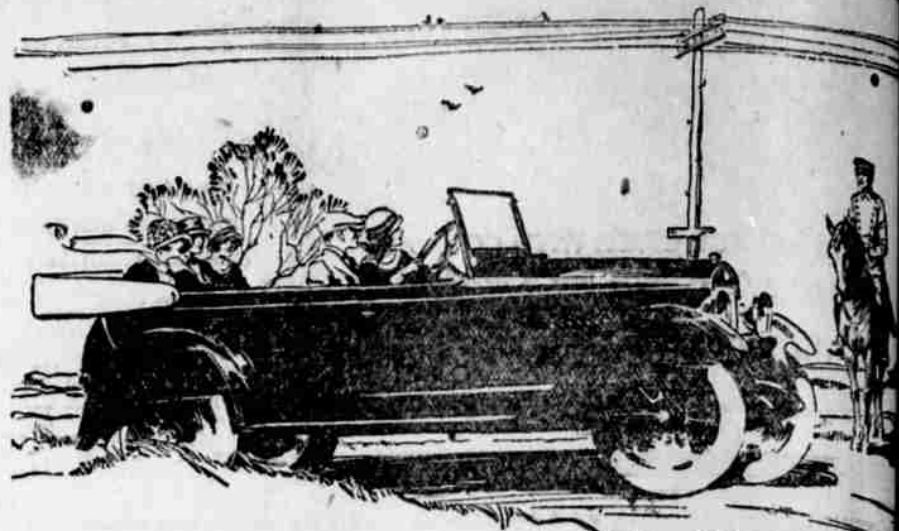
S. P. Beaser, charged with the robbery of Oliver's hardware store, was sentenced to 5 years in the state penitentiary, the maximum sentence for the crime, when he was arraigned yesterday afternoon before Judge Hamilton. The grand jury reported last night returning a true bill against Beaser, and not true bills against Dave Towne, W. S. Marney and Paul Bowling. Beaser was immediately arraigned and entered a plea of guilty. He had previously

## ATTENTION UMPQUA CHIEFS

Umpqua Chiefs will wear their marching suit at all times during the Strawberry Carnival. At quarter of nine Thursday morning all Umpqua Chiefs will assemble at the armory to take part as a body in the opening of the carnival—marching uniform and hats.

On Friday at quarter to seven in the evening they will assemble in Indian regalia to take part in the evening ceremonies.

All members please take notice and attend promptly.  
GEORGE NEUNER, JR.,  
Chief Umpqua.



Scientifically balanced, holds the road at all speeds. All-steel body. One-piece windshield. Genuine leather cushions, ten inches deep. Coil lights. Standard non-skid cord tires.

## TODAY—

Find out what comfort, power, beauty \$1045 will buy in a Studebaker

STUDEBAKER offers a world-famous Six, a car embodying the best men know, at a price that makes it folly to deny yourself a fine car.

Here is the thrill of a powerful six-cylinder L-head motor; the comfort and luxury of a big, roomy body—deep cushioned and restful; beauty that characterizes the most costly cars.

Now in justice to yourself, look at this car. Compare it with competitive cars at its price—then with cars selling for several hundred dollars more.

Compare it for beauty, comfort, roominess, upholstery, for obvious refinements. Compare it, too, for ease of handling, flexibility, power, quietness, lack of vibration. See for yourself what you can buy with the money in a fine car today.

Ride in this car, ride in competitive cars. Comparison is the surest way to judge an automobile. Studebaker will place a Light Six at your disposal for this purpose at the time you name.

Buy no car at \$500 or more without making this test. Don't buy blindfolded.

LIGHT-SIX		SPECIAL-SIX		BIG-SIX	
5-Pass. 112-in. W. B. 40 H.P.	\$1045	5-Pass. 119-in. W. B. 50 H.P.	\$1425	7-Pass. 126-in. W. B. 60 H.P.	\$1750
Touring	1825	Touring	1400	Touring	1835
Roadster (3-Pass.)	1195	Roadster (3-Pass.)	1895	Speedster (5-Pass.)	2495
Coupe (5-Pass.)	1395	Coupe (5-Pass.)	1985	Coupe (5-Pass.)	2665
Sedan	1485	Sedan	1985	Sedan	2665

All prices f. o. b. factory. Terms to meet your convenience.

W. A. BURR & SONS  
Central Garage—Roseburg

## STUDEBAKER LIGHT-SIX - \$1045

served two terms in the penitentiary, and Judge Hamilton said that he was such a hardened criminal that he deserved no leniency.

Judge Hamilton today called the docket for the term of court to commence Monday. The judge's health has improved considerably and he will be able to conduct the May term.

## FIELD MEET TICKETS ON SALE

Tickets for the field and track meet were put on sale today at Crocker's, Chapman's and Fullerton's drug stores. The tickets sell today at 25 and 15 cents, but tomorrow will be 35 and 25 cents.

Just remember the Fern's specials on pansies this week.

## Fords! Fords!

1922 Truck  
1921 Coupe  
1922 Coupe  
1923 Roadster  
1921 Touring  
1918 Touring at \$80.00  
Ford Bugs, three of them.  
Hudson Speedster, very good.  
We can satisfy you if you will give us a chance.

Terms to Suit.  
C. A. LOCKWOOD  
MOTOR CO.  
AT LOCKWOOD'S  
FORD CORNER



**AUTOS REPAIRED**

Whatever Is Wrong with your auto engine, let us or have our men make it right. We are experts on repairing all makes autos, we don't care what repair may be. Complete hauling done on all cars.


Hall & Young Garage  
631 Winchester St.

## New Chevrolet Prices

Roadster	\$630.00	Touring	\$650.00
Coupe	\$830.00	Sedan	\$920.00

Ton Truck Chassis \$675.00

Prices f. o. b. Roseburg



**CHEVROLET**


ED MARSH MOTOR CO.  
Phone 448

## QUINN TO ATTEND STATE CONVENTION

John H. Quinn, national commander of the American Legion, is to attend the state convention at Portland on June 11, 12, 13 and 14, according to word received by the local post. This is the first department visit to be made by the commander, as he has been devoting all of his

time to the fight for the soldier bonus measure. It is expected that his presence at the convention will serve to attract a large number of legionnaires who would not otherwise attend.

It is requested that all members of Umpqua post who desire to attend the state meeting notify Leon McClintock, adjutant, as soon as possible. Umpqua post will furnish transportation and rooms for as many of its members as funds will permit. Any legion man who has an auto in which he can take one or more veterans is requested to notify the adjutant also that definite arrangements may be made.



## For Real Strength this Car is Unsurpassed in Any Class

A brute for strength—where strength is vital. As finely built as the finest car—where close measurements are called for.

A car that in all important parts is unsurpassed in any class—a car that is stronger and sturdier in proportion to weight and power than cars costing two and three times its price—that is the good Maxwell, and that is why the Maxwell is so unusually good.

It gives economical, care-free service, with easy riding and easy handling, which cannot be equalled at anywhere near its price.

J. W. Michael Motor Company  
Distributor  
329 North Main St. Roseburg, Oregon

The Good  
**MAXWELL**