



The Moreland Motor Truck company, which for the past thirteen years has been manufacturing trucks on the coast for coast work has been steadily extending its direct factory branch system of sales, parts and service; until now it has twelve factory branches located at such points all up and down the coast as will best cover and serve the territory.

The headquarters for this district are at Portland, where the company has recently established itself in a fine, large building at the corner of East Third and Oregon streets. This is a two-story building with abundant room for the display of the company's products and the stocking of large supplies of completed trucks and repair parts, assuring prompt service. It is stated that the largest stock in the Northwest of repair parts, not only for Moreland's, but for trucks using standardized units, will be kept here ready for instant service.

The company is now manufacturing at its big modern plant at Bunk, California, five regular model trucks, two specials for extra heavy work under unusual conditions, and three regular models of modern, low-hung passenger transportation coaches, in which all of the latest features of engineering and construction are embodied to make them fast, safe, comfortable and generally efficient in all city, inter-city, school and street railway work.

The company's line is complete to serve the bus or truck user in every requirement from light, fast delivery work to the heaviest logging job. In addition to the direct factory branch at Portland, and another at Spokane, Wash., dealers are being appointed in the smaller cities to thoroughly cover the field and insure the purchaser the best of care and service.

An organized drive by the 14,000,000 automobile owners of the United States is under way to have Congress

remove the war tax of 5 per cent on passenger cars, tires, accessories and parts.



DO YOU KNOW

what kind of a rear construction this is? It takes a skilled mechanic to recognize it; but it is only the skilled mechanic who should work on a car anyway. You will find that our men are experts in their line, and when they work for you, you pay for brains and not for experimenting.

Hall & Young Garage  
631 Winchester St. Phone 326

COTTER PIN TOOL

IS HANDY ARTICLE

A handy cotter pin tool can be made from a piece of three-eighths inch round cold rolled steel. This should be almost nine inches long and tapered at the end. The taper end is bent in the form of a button hook for pulling the cotter pins and the other end is upset to form a light hammer for driving them into position when this is necessary.—Automobile Digest.

4125 subscribers—at buyers—read The Roseburg News-Review. Is recognized as one of the finest papers in the state. The large circulation all in tonight's News-Review.

STAR CAR MAKES A  
CROSS COUNTRY RUN

With over 4000 miles of road to their credit, over a fourth of which was described as rough and muddy, with gumbo sticky enough to make fly paper blush with shame, Mr. and Mrs. M. L. Gillette reached Portland the other day from Grand Rapids, Mich., in their Star sedan. The interesting story of the cross-country journey, made in the fall after dirt roads of the middle west had rapidly begun to approach the impassable state, was told by Mr. Gillette to C. L. Ross, Star distributor for the Portland district last week.

Incidentally, Mr. Gillette paid a great tribute to his Star car, declaring that the way it plowed over the difficult roads of Nebraska and Wyoming was really remarkable. No service was required on the car after it reached Portland on its long grind beyond the tightening of a few bolts and minor adjustments, which he did himself, said Gillette, while no repairs or replacements of any kind were necessary on the way.

"We left Grand Rapids the middle of September," said Gillette, "and came west in leisurely fashion, via the central route, to Denver. From there on we were forced to hurry a bit in order to get through before the roads became impassable with snow. A storm at any time might have put us out of the running in that high altitude, but we were in luck and had little real difficulty, although we saw traces of snow a number of times."

"From Grand Rapids to Chicago and thence to Omaha we found excellent roads, paved most of the way. But when we turned into Iowa, our troubles began. The first 100 miles in Iowa were good, but from then on it was a continuous fight with this sticky gumbo mud. The same thing held true across Nebraska. For miles the Star car plowed along, but we had no mechanical difficulty despite the terrible roads. The Star seemed to hold the road remarkably well and we added many cars which had slid off the crown of the road into the soft mud at the side and were helpless."

"Once in Colorado we encountered fine roads, and we toured around a bit visiting points of interest, including Buffalo Bill's grave. I should say that all this time from Grand Rapids out we had been carrying a load of over 1500 pounds, which I maintain is some freight, even for a Star. At Denver, however, hearing that the road ahead to Salt Lake City was very bad, we shipped a quantity of our stuff to Portland by freight. It was a good thing too, for the road to Salt Lake City was all that it had been pictured. It was terrible, exceedingly rough and muddy. In contrast was the road from Salt Lake City on to Portland. This road was in fair condition to the Oregon line at Ontario, and, of course, in wonderful shape from there on to Portland."

The Star sedan in which the Gillettes made the trip had about 4000 miles to its credit before the run was started and rang up 4000 more miles on the journey. The car came through like a clock, Gillette told Mr. Ross, and in fact has cost nothing in the way of breakage or replacement since it was purchased.

BRIBERY CHARGE AIRED

(By United Press.)  
PORTLAND, Dec. 5.—Charges of bribery against State Probation Agent McMills, were brought out during the testimony in the case of Sam and Antonio Skoja, Astoria hotel men who are being tried on a liquor charge. Sam Skoja testified that he paid McMills \$150 on the day the liquor was seized. McMills admitted receiving the money but said he took it as a bribe for an attempted bribery charge.

LOCAL NEWS

John Alexander a resident of Gilbe was in Roseburg today for several hours attending to business.

Bus Crouch who resides in Canville was in Roseburg this afternoon for a few hours shopping and visiting with friends.

Features you will enjoy, news, that will interest you and advertisements that will save money. You'll find 'em advertised.

Mrs. Mary Bartwell of Seattle who has been spending the past two weeks with her parents, Mr. and Mrs. W. T. Hart of Willits, returned to her home in Seattle this afternoon. Mrs. Bartwell was called here on account of the illness of her mother.

Mr. and Mrs. W. S. Allen who have been making their home in the Kohl-haven apartments for the past four months, left today for Oakland, Oregon, where they will locate. Mr. Allen has been employed as operator for the Southern Pacific and has been transferred to Oakland.

Mrs. Fernand Root who has been spending a few days visiting with Mr. and Mrs. R. L. Hyland returned to her home in Eugene this afternoon. Mrs. Root is a sister of Mr. Hyland. She was accompanied by Eloise Hyland, daughter of Mr. and Mrs. R. L. Hyland.



that's the  
Verdict  
on

The Star

Prices of Models  
Here—Tax and Freight Paid  
Touring Car - \$630  
Roadster - - - 625  
Coupe - - - 830  
Sedan - - - 990

\$490

F. O. B. Lansing, Mich.

A critical public—a public spoiled by offerings of the finest that motor engineering has produced since the world—has looked at the new 1924 Star Car, and in every way. They have "O. K'd" it—and they have fact by piling up order upon order, in every town from the northern boundary of Washington to the Mexican border.

RAPP BROS.

County Distributors, Phone 371

West Cass and Pine Streets

Roseburg Depot

CLOSED CAR COMFORT

Equipped with a heater of exceptional capacity, and with doors and windows snugly weather-stripped, the Business Sedan is invitingly warm on the coldest days.

You discover, too, that the seat-backs are perfectly tilted for maximum ease; that the seats themselves are generously deep and upholstered in blue Spanish leather of the finest quality.

These impressions of interior comfort are further emphasized when the car gets under way, and you experience the admirable balance and buoyancy of the new spring suspension.

The price is \$1200 f. o. b. Detroit—\$1475 delivered.  
Roseburg

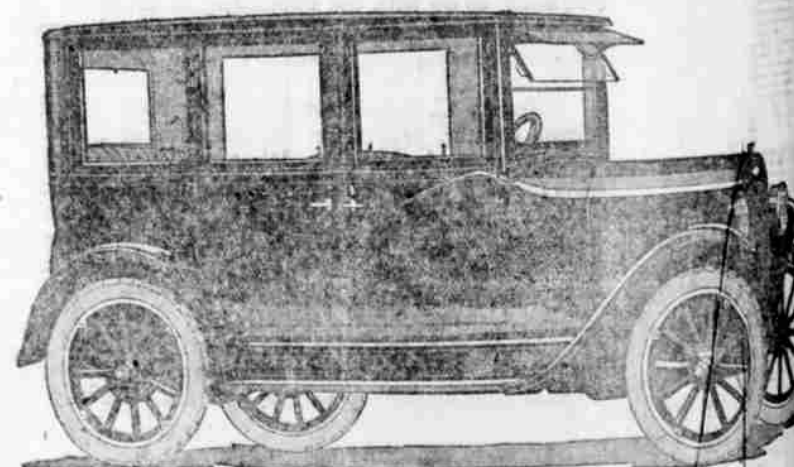
J. O. NEWLAND & SON  
DODGE BROTHERS DEALERS  
Roseburg, Oregon



THE EYES OF THE WORLD ARE ON



5-Pass. Sedan \$990.00, F. O. B. Roseburg



ED MARSH MOTOR CO.

131 South Rose

Mrs. H. Moore who has been spending the past two weeks visiting in this city with Mr. and Mrs. J. A. Smith, left this afternoon for her home in Portland.

Always first with the latest—and the yours each day by mail for \$4 per year.—The Roseburg News-Review.

FLORIDA HAS MOST UNUSUAL HIGHWAY

The most remarkable automobile road in the world is to be built between the mainland of Florida and

Key West, a distance of 125 miles out to sea. The new road, when completed, will be the longest and probably the only extensive automobile road over the sea. At times the motorist will be almost, if not actually, out of sight of land.

By January 1 it is estimated that there will be in operation 17,000,000 motor vehicles. Of this total 14,000,000 will be in the United States, about one to every eight persons, whereas in the rest of the world the proportions will be about one to 112 persons.

STANDARD OIL COMPANY  
O. N. Diesel Engine  
arrived in Roseburg  
the place was made  
vision of H. E. Ryan,  
Roseburg, who stated  
the Hood is having  
shades at the time  
is taking. The new  
company will have  
past five  
Weather