



### MY ROSY SKIN

How I clean it—how I preserve it.

By EDNA WALLACE HOPPER

My skin is the marvel of millions. Even softer and more rosy than 40 years ago. Yet mine is a grand-mother's age.

Mine has been no easy life. I have lived it in the sunlight. I served France five years in the rigors of the war. Yet countless young girls envy my complexion. I can easily pass for 19.

France gave me the methods I employ. Now, in gratitude, I am supplying them to others. They multiplied my beauty, gave me perennial youth. Now I hope to bring to millions the benefits I got.

#### How I Keep Clean.

The first step to beauty is a clean skin—a skin that is clean to the depths. Lucile Lantelme, a famous Parisian beauty, taught me how to get it.

The method is a liquid cleanser. I call it my Facial Youth. It contains no animal, no vegetable fat. So it cannot grow hair on the face. It cannot assimilate in any way with the skin. But it penetrates every pore. When I wipe it off, all the dirt and grime, all that clogs the skin comes with it.

You may think you clean your skin without it, but you don't. Apply Facial Youth to what you call a clean skin and see the extra dirt you get.

That is what causes blackheads and blemishes.

I cover my body with Facial Youth before bathing. Thus I remove three times the refuse I remove without it.

#### Nothing to Compare.

My Facial Youth is the greatest cleansing formula science has created. The greatest beauty experts now employ it. Some supply it to others, but at four times my price.

I bring it to you at a modest price, and I urge you to employ it. You will find nothing to approach it. A fine complexion is impossible unless the skin is clean.

Edna Wallace Hopper's Facial Youth is now supplied by all druggists and toilet counters at 75 cents per bottle. Also my Youth Cream—my fruity cold cream. Also my White Youth Clay—the last word in facial care. Also my Hair Youth, which brought my luxuriant hair. My Beauty Book comes with each.

Take this first step to beauty now. Clean the skin with my Facial Youth. The immediate results will amaze you. Then, if you wish my other aids, they are at your call. Edna Wallace Hopper, business address, Waukesha, Wis.

Edna Wallace Hopper is now appearing twice daily in the Pantages theaters of the Pacific coast and western states.

## IMMATURE TAPE WORM IN VENISON

Parasite Has Been Brought Into Oregon by Alaskan Dog It Is Believed.

### SPECIMENS WANTED

Effort Will Be Made to Secure Samples of Meat Containing Form of Worm to Make Experiments.

Hunters are asked to watch for the parasitic tape worm which has been found in deer in this county, and send any specimens located to Dr. George E. Houck, who will forward them to the Oregon experiment station.

Sometime ago a hunter brought to Dr. Houck a portion of venison containing small white grains of some sort. Dr. Houck forwarded the meat to the Oregon Agricultural college and it was found that the meat contained the immature form of tape worm. A person eating this meat would be subject to the worm as it would mature upon being transferred. In connection with the original specimen sent in, Dr. Houck has received the following letter:

Doctor George E. Houck, Roseburg, Oregon.

My Dear Doctor Houck:

Approximately a month ago I received a specimen from a deer which you had forwarded to the state board of health. I wrote you at the time that this was probably a tape worm, but that it would be forwarded to Washington, D. C., for determination. I have heard from Dr. Ransom and he advises that this is quite probably cysticercus tarandi or the immature form of Taenia krabbel.

The interesting thing about this is the fact that Taenia krabbel is the tape worm of the dog, the immature stage of which has never been reported anywhere in the United States. Up to the present time reports have come only from sections where reindeer are present and the immature form has been found only in these animals. Doctor Ransom suggests that it will very probably attack the deer as this species is so closely related to the reindeer. He suggests further that it would not be at all improbable that does coming down from Alaska would have brought the mature form of the parasite into Oregon. I know personally of several does which have been brought down from different sections of Alaska to Oregon.

Doctor Ransom has requested that we keep a sharp lookout for further occurrences of this parasite. I am writing, therefore, with the suggestion that you advise the hunters who are going out next year concerning the possibility of finding this cystic tape worm. If you can secure any specimens I should be glad for you to forward them to me without using any preservative. I shall feed them to a dog and attempt to obtain the mature tape worm from this animal from 10 to 15 weeks later. Yours very truly,

OREGON EXPERIMENT STA.,

By B. T. Slinnis, professor of veterinary medicine.

The parasite appears as small grains of rice in the meat. They resemble rice in every respect, except that they are softer than rice. The immature form will be found in the muscles and will probably be quite numerous. They do not develop in the deer, but as soon as they are transferred to some other animal, or to a human, they immediately develop and take on the mature form. Dr. Houck asks any hunter who next season finds these parasites in the meat to send him a sample so that he may comply with the request of the experiment station.

Car cement in, L. W. Metzger.

## S. P. COMPANY BUYS NEW LOCOMOTIVES

Sixty-three new and powerful locomotives to be placed in service in 1924 have just been ordered by the Southern Pacific company, it was announced today. Coincident with the

### STOMACH UPSET?

Get at the Real Cause—Take Dr. Edwards' Olive Tablets

That's what thousands of stomach sufferers are doing now. Instead of taking tonics, or trying to patch up a poor digestion, they are attacking the real cause of the ailment—clogged liver and disordered bowels.

Dr. Edwards' Olive Tablets arouse the liver in a soothing, healing way. When the liver and bowels are performing their natural functions, away goes indigestion and stomach troubles.

Have you a bad taste, coated tongue, poor appetite, a lazy, don't-care feeling, no ambition or energy, trouble with undigested foods? Take Olive Tablets the substitute for calomel.

Dr. Edwards' Olive Tablets are a purely vegetable compound mixed with olive oil. You will know them by their olive color. They do the work without griping, cramps or pain.

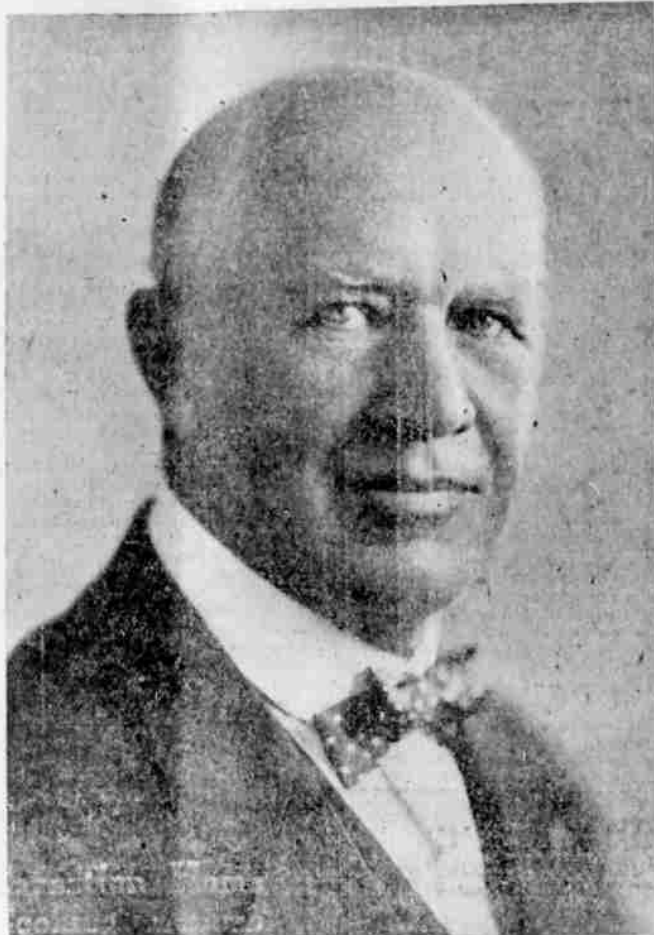
Take one or two at bedtime for quick relief. Eat what you like. 15c and 50c.

# Great Law Enforcement

## MASS MEETING!

### Roseburg Armory, Sunday, November 18

#### 8 P. M. SHARP



GOVERNOR WALTER M. PIERCE



W. J. HERWIG, OF PORTLAND

### PRINCIPAL SPEAKERS AT THE LAW ENFORCEMENT MASS MEETING

#### ADDRESS BY GOVERNOR WALTER M. PIERCE

The fighting Governor of Oregon will deliver an address upon "The Enforcement of the Law." It is expected that the Governor will have something of considerable interest to say to the people of Douglas County. The Governor is determined that the Prohibition Laws shall be enforced and should have the hearty co-operation of all the citizens.

#### ADDRESS BY W. J. HERWIG, Superintendent of Saloon League of Oregon

Subject: "The Majesty of the Law." Herwig is not sparing in his attack upon officials who are not vigorously and effectively enforcing the Prohibition Laws of the State. He is a fearless leader who is not afraid to speak the truth and should be heard by all who are interested in Law and Order.

### The Last Raid of Sheriff Kendall of Linn County.

The last and fatal raid of Sheriff Kendall of Linn County, which has been filmed by the Anti-Saloon League of Oregon, will be shown. The film contains several other interesting features. Come prepared for a thrill—you will not be disappointed.

Every red-blooded American citizen of Roseburg, who believes in Law and Order, is urged to attend this Meeting.

All of the churches of Roseburg are uniting in this Law Enforcement Mass Meeting and it has the backing and endorsement of the Roseburg Ministerial Association.

THE MEETING WILL BEGIN SHARP 8:00 P. M.

### EVERYBODY WELCOME

### EVERYBODY COME

new purchase. It was announced that eastern manufacturing concerns have begun delivery of fifty new freight and passenger locomotives ordered the early part of this year by the Southern Pacific company. The two orders, adding a total of 115 engines for handling constantly increasing traffic in the West, will represent an expenditure of about \$8,000,000 when delivered and fitted for service. The new locomotives embody the latest approved features for increasing efficiency and economy of operation as worked out by Southern Pacific motive power experts. They will make possible longer runs and the handling of heavier trains. Thirty four of the locomotives now being delivered are of the "4-6-2" type for heavy freight service and are similar to those in use on mountain sections of the line. These are among the largest and most modern of their type in use on any railroad. Ten are of the "4-8-2" type, commonly known as the mountain type, passenger locomotive, which are among the most powerful ever built. These are to be used in fast passenger service over mountain divisions and on exceptionally long runs. The remaining six locomotives are of the "4-6-2" type of passenger engine, similar to those built in 1911 for use on the Salt Lake division, which have proved so efficient in making the run of 335 miles between Ogden, Utah, and Sparks, Nevada.

The new mountain type passenger locomotives are heavier and more powerful than any passenger locomotive now used by the Southern Pacific. They have a tractive, or pulling power of 57,510 pounds without the auxiliary booster engine and 67,500 pounds with the booster. The total weight of engine and tender is approximately 372,000 pounds; length over all, 97 feet, 5.14 inches; height, 16 feet, 11.2 inches; driving wheels, 73.12 inches in diameter. The booster engine is a separate two-cylinder steam engine geared to axle of trailing truck wheels for the purpose of assisting main engine in handling trains, both in starting and on heavy

grades. It is cut out as soon as the train attains a speed of about 15 miles an hour. The "4-6-2" type passenger locomotives, found to be one of the most efficient and easiest riding engines in use, have a tractive power of 43,950 pounds; weight with tender approximately 327,250 pounds, and are 97 feet, 5.14 inches in length. The powerful "2-10-2" freight locomotives are 97 feet, 9.14 inches long, have tractive power without booster of 75,150 pounds, with booster 84,710 pounds, and weigh approximately 619,300 pounds.

All of the engines are equipped with water heaters, which, by the double operation of heating water as it comes from the boiler, keep it into the boiler. They have cheap brakes as well as wheels, consisting of two per wheel, which provide for not breaking and less wear.

SOCIAL DANCE

At Winchester, Saturday, November 17, where you should spend time.

### SULPHUR IS BEST TO CLEAR UP UGLY, BROKEN OUT SKIN

Any breaking out of skin irritation on face, neck or body is overcome quickest by applying Mentho-Sulphur, says a noted skin specialist. Because of its germ destroying properties, nothing has ever been found to take the place of this sulphur preparation that instantly brings ease from the itching, burning and irritation.

Mentho-Sulphur heals eczema right up, leaving the skin clear and smooth. It seldom fails to relieve the torment of disfigurement. A little jar of Rowles' Mentho-Sulphur may be obtained at any drug store. It is used like cold cream.

At Winchester, Saturday, November 17, where you should spend time.

### SOCIAL DANCE

At Winchester, Saturday, November 17, where you should spend time.

## L. W. Metzger

Dealer in

### General Building Material

Lumber, Lath, Shingles, Metal, Lath Plaster, Fire Brick, Lime, Sewer Pipe, Reinforcing Steel and Building Specialties

Warehouse: Empire Barn

## PIERCE MAY SEEK SEAT IN SENATE

SALEM, Nov. 10.—Success of the income tax measure is said by politicians to have materially altered the senatorial situation in Oregon and in all probability made Governor Walter M. Pierce a contender for the democratic nomination. For some time the executive has been pushed forward to this end by his friends and it is well known among his associates that he has been "rarin'" to go. The referendum election proved that his hold on the farmer vote is unshaken and the result is considered as a vote of confidence, a personal triumph, by his followers.

Should the governor announce his candidacy, it may be considered a certainty that Milton Miller will withdraw to accept some state appointment. This will leave Will R. King and George Maxfield of Medford to contest the nomination with Pierce, and neither is strong enough

to make headway against the executive, Sam Garland of Lebanon and William Strayer of Baker, who have been urged to run, have not yet announced their candidacies, and may not do so with the governor in the field.

On the republican side, gossip has it that Mayor Baker, unable to secure desired secret society endorsements, will retire and that K. K. Kubli is slated to receive at least a fractional endorsement at the last minute from both clan and federation. Some of this strength will go to McNary, now speeding on his way to Washington, while McArthur is hoping to concentrate anti-klan support against a divided field.

Mrs. L. B. Moore who has been Sherman Clay & Co's sales representative in Roseburg for years has been compelled to give up our line on account of losing lease on her store, and we are now looking for new dealer. If you have floor space in your store or wish to open up inside store write me at once at 415 Court St., Salem and I will arrange to see you personally. H. L. Moore, field mar. for Sherman Clay Co., Plano dept.

# WILLYS Coupe-Sedan

Standard \$1450

De Luxe \$1550

## The Difference is Finish

THE famous Willys-Knight Coupe-Sedan is now available in two finishes: De Luxe, in rich blue, nickel trimmed, with black superstructure and running gear, at newly reduced price; and Standard, by request, entirely in black, with washable Spanish long grain upholstery, at a still greater price saving. Doors front and rear—no seat climbing! A demonstration will reveal the reason for this fine car's great popularity.

GLENN H. TAYLOR, Dealer

Service Garage, Roseburg, Ore.

# KNIGHT