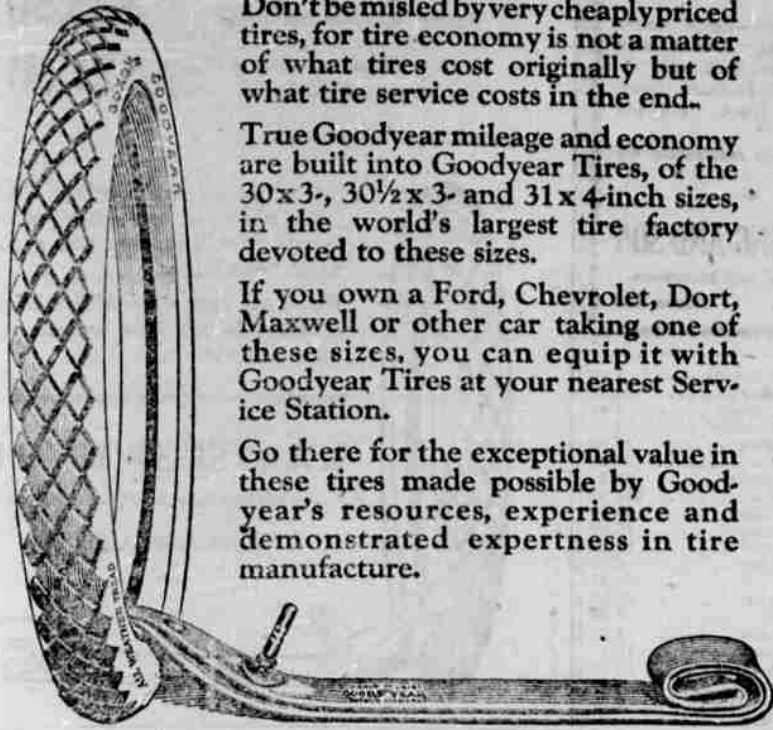


Get Goodyear Value in Tires for Small Cars



Don't be misled by very cheaply priced tires, for tire economy is not a matter of what tires cost originally but of what tire service costs in the end.

True Goodyear mileage and economy are built into Goodyear Tires, of the 30x3-, 30½x3- and 31x4-inch sizes, in the world's largest tire factory devoted to these sizes.

If you own a Ford, Chevrolet, Dort, Maxwell or other car taking one of these sizes, you can equip it with Goodyear Tires at your nearest Service Station.

Go there for the exceptional value in these tires made possible by Goodyear's resources, experience and demonstrated expertness in tire manufacture.

30 x 3½ Goodyear Double-Cure Fabric, All-Weather Tread \$23.50

30 x 3½ Goodyear Single-Cure Fabric, Anti-Skid Tread \$21.50

Goodyear Heavy Tourist Tubes cost no more than the price you are asked to pay for tubes of less merit—why risk costly casings when such sure protection is available? 30 x 3½ size \$4.50 in waterproof bag

GOOD YEAR

AROUND THE TOWN

Visits in Portland—
Miss Vivian Orcutt left this morning for Portland to visit for a short time with Miss Helen Clark.

Returns from Portland—
Mrs. Ray Wright who has been visiting in Portland for a short time arrived in this city last night.

To Convention—
Mrs. L. J. Christmas went to Salem this morning to join her husband in attending the Elks convention.

Visits Parents—
Mrs. James A. Pinkerton left this morning for Payette, Idaho where she will visit her parents for a short time.

Will Go to Portland—
Misses Mary and Della McCarty will leave tomorrow for Portland where they will visit with friends for several days.

Visit in Ashland—
Mrs. Bert Cox, of this city, left this morning for Ashland where she will make an extended visit with her relatives.

From Oakland—
Miss Ethel Mires arrived in Roseburg this morning from Oakland to spend several days here visiting with friends.

Returns Home—
Mrs. T. G. Havens, who spent yesterday in Roseburg shopping and visiting with friends returned to her home last evening.

To Riddle—
Clarence Crow, of Riddle, spent yesterday in this city attending to business matters, returning home on the evening train.

To Visit at Portland—
Mrs. B. F. Lohr, and daughter, Mildred, went to Portland this morning to visit with friends and relatives for a number of days.

To Myrtle Creek—
Mrs. O. O. Hunsaker and two children, Raymond and Ethel, left this morning for Myrtle Creek where they will visit with relatives for several days.

Down from Idaho—
Edward R. Fickenscher and family of Lewiston, Idaho, are in town for a week's visit. These people lived in Roseburg about ten years ago and are spending a part of their vacation here. Later they will leave for Troutdale where they will camp for a short time.

Serves Lemonade—
The News-Review office force was greatly refreshed just prior to press time yesterday when the generosity of Chas. Lerry prompted him to serve several glasses of fresh, ice-cold lemonade from his stand on Jackson street. We are sure of our ground when we assert that Charley knows how to make lemonade.

Epidemic of Lost Purse—
During the past few weeks there has been a general epidemic of lost purses and pocket books. Men, women and children alike are suffering from the epidemic, and each day the News-Review office is besieged with those who have lost purses of some nature. In a large majority of cases the valuables are located by a small classified advertisement, this method having proved very successful in the bringing about of the return of the lost articles.

NOTICE OF SALE OF GOVERNMENT TIMBER.—General Land Office, Washington, D. C., July 3, 1920.—Notice is hereby given that subject to the conditions and limitations of the Act of June 8, 1916 (39 Stat., 218), and the instructions of the Secretary of the Interior of September 15, 1917, the timber on the following lands will be sold August 23, 1920, at 10 o'clock a. m., at public auction at the United States land office at Roseburg, Oregon, to the highest bidder at not less than the appraised value as shown by this notice, sale to be subject to the approval of the Secretary of the Interior. The purchase price with an additional sum of one-fifth of one per cent thereof, being commissions allowed, must be deposited at time of sale, money to be returned if sale is not approved, otherwise patent will issue for the timber which must be removed within ten years. Bids will be received from citizens of the United States, associations of such citizens and corporations organized under the laws of the United States or any state, territory or district thereof only. Upon application of a qualified purchaser, the timber on any legal subdivision will be offered separately before being included in any offer of a larger unit. T. 15 S., R. 1 W., Sec. 31, NE¼ SE¼, fir 1460 M., cedar 30 M., NW¼ SE¼, fir 1800 M., SE¼ SE¼, fir 550 M., SW¼ SE¼, fir 1740 M., cedar 20 M., NE¼ SW¼, fir 1220 M., cedar 30 M., Lot 3, fir 1170 M., SE¼ SW¼, fir 1600 M., Lot 4, fir 1800 M., none of the fir or cedar to be sold for less than \$2.00 per M. T. 16 S., R. 1 W., Sec. 9, NE¼ NE¼, red fir 625 M., white fir 50 M., SE¼ NE¼, red fir 350 M.; none of the red fir to be sold for less than \$1.75 per M., and none of the white fir to be sold for less than 50 cents per M. T. 16 S., R. 1 W., Sec. 23, NE¼ NW¼, fir 1700 M., NW¼ NW¼, fir 1550 M., SW¼ NW¼, fir 2050 M., cedar 25 M., SW¼ SE¼, fir 1640 M., cedar 50 M., SE¼ SE¼, fir 1425 M., cedar 30 M., NE¼ SW¼, fir 400 M., NW¼ SW¼, fir 880 M., SE¼ SW¼, fir 540 M., cedar 10 M.; none of the fir or cedar to be sold for less than \$2.00 per M. (Signed) CLAY TALLMAN, Commissioner, General Land Office.

WHEN YOU LEAVE TOWN

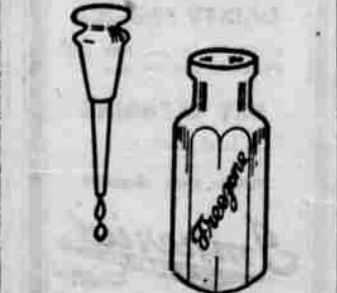
this summer it's a good move to have the News-Review follow you to your vacation home. Let us mail it to you daily—just phone 135 or write our subscription department and we'll see that it comes to you regularly.

PAVING SOON COMPLETE.

Paving on the highway between the county line and Rogue River will be completed soon, according to J. L. Calvert, who with S. S. Schell has the contract for the section between the line and Gold Hill, says the Grants Pass Courier. The paving is going along fast now and the crew is averaging a mile in about 11 days. There is two miles left on the road to Rogue River but this will be done within a couple of weeks. The mile between the finished portion and the line at the completed part further up will be done Monday. Two plants have been thrown together and the increased output will allow the work to proceed at a much faster rate.

SAY "DIAMOND DYES"
Don't streak or ruin your material in a poor dye. Insist on "Diamond Dyes." Easy directions in package.

"CORNS"
Lift Right Off Without Pain



Doesn't hurt a bit. Drop a little Freesone on an aching corn instantly the corn stops hurting and shortly you lift it right off with fingers. Truly!
Your druggist sells a tiny bottle of Freesone for a few cents, sufficient to remove every hard corn, soft corn, or corn between the toes, and the calluses, without soreness or irritation.

Fisher's Pancake Flour

Just add water it's ready

PANCAKE FLOUR

They'll Want Pancakes, of course—

Fluffy, crispy-brown FISHER'S PANCAKES, frying-pan size, will certainly appeal to the inner fisherman.

EVERYBODY HAS A CAMP APPETITE. They all vote for PANCAKES. Nobody wants to wait for supper.

They won't have to wait when there's FISHER'S PANCAKE FLOUR in camp.

FISHER'S PANCAKE FLOUR is a scientific combination of buck-wheat, wheat, corn and rice, with the exact amount of rising needed to make perfect PANCAKES and even a bit of corn sugar to make a crisp, brown crust.

The sweet powdered milk is mixed right in to save you adding fresh milk. You just add water from the nearest spring and the batter's ready for the frying pan.

Manufactured in "America's Finest Flouring Mills" by

Fisher Flouring Mills Company

PORTLAND

A Camp Necessity

Number of Autos Are On Increase

In the face of restricted sales and a supply of crude oil that has not been increased, the Standard Oil company has furnished forty per cent more gasoline throughout the state during the period of the shortage than it did during the corresponding months last year, according to word received by B. L. Hyland of the local office.

"There has been a lot said about the reasons for the shortage," Mr. Hyland says, "but the fact remains that the shortage is due to a phenomenal increase in the number of automobiles on the Pacific coast, an increase in the number of tractors, and increase in the number of all sorts of gasoline engines, at a time when the crude oil production in California has stood practically at one point for five years.

"It has been said that there is no shortage in the east, but there is a shortage in the east and all over the

world. In the east it doesn't seem so severe because motor cars are laid up during a good many winter months and when there are not so many wheels turning there is an opportunity to work up a reserve supply. Here we haven't any reserve supply."

The figures behind this statement were contained in the company's announcement:

In 1915 there were 239,000 motor vehicles on the Pacific coast, in 1920 more than 780,000; in 1915 there were 3000 tractors, in 1920 at least 25,000. There are many thousands of gas engines in operation. In 1918 the Standard Oil company's sales of gasoline amounted to 152,000,000 gallons, in 1919, 193,900,000, while the sales of 1920 will be more than 300,000,000 gallons. So far this year, this company has sold 48.4 per cent more gasoline than for the same period of last year.

These facts prove the situation simply and conclusively. There is much supporting evidence to show the tremendously increased consumption. Take reserve stocks of crude oil: These amounted to 58,500,000

barrels in 1915, to only 28,600,000 on May 31, 1920, a low figure not touched in ten years. Consider Standard Oil reserve stocks of gasoline: On January 1, 1918, 27,000,000 gallons; a year later, 14,300,000 gallons; and this year, 4,400,000 gallons, or but 88,000 barrels, of which ten per cent was unavailable, being in tank bottom and pipe lines.

The report promises relief some time this fall when the new process refineries at Richmond and El Segundo are put in operation.

Returns From California—
Mrs. Mary Palm of this city who has been spending the past few months in California, returned to Roseburg yesterday afternoon. The greater part of the time was spent by Mrs. Palm at Long Beach.

MAKING TIMBER INVESTMENT
MARSHFIELD, July 23—Edward A. Hines of Chicago, the biggest lumber broker in the world is in Coos Bay for a short stay. He is accompanied by several of the officials of his company and his visit may mean an entry in an extensive way into Coos Bay lumber operations. Whether it will be simply an extensive purchaser of the cut of the mills on contract or as an actual operator is as yet unannounced.

Mr. Hines was here about a year ago and had some of his cruisers going over timber in this section. The firm became interested in a new

source of supply to take the place of southern timber which will be pretty well cut out in a few years.

Percy Payne and family left this morning to enjoy a couple of weeks vacation at Bay City.

OH, BY JINGO
Don't Go Fishing Without a Case of **LUXO**—Makes Your Lunch Taste Right—and the Fish Bite.

ROSEBURG DAIRY AND SODA WORKS
PHONE 186

CASTORIA
For Infants and Children
In Use For Over 30 Years

Always bears the signature of *Chas. H. Hitchcock*

WILL BUY YOUR USED FURNITURE, STOVES, etc.
J. B. HENINGER,
SUCCESSOR TO McDALLAN & CHAMBERS.

We Buy at BERGER'S BARGAIN STORE
Hides, Mohair, Rags, Rubber, Old Metals, Papers and Bones.
A Good Line of Second Hand Clothing For Sale.
Cases and Pine Sts.

OPEN ALL SUMMER
Piano Department
Heinline-Moore Conservatory
Violin and Physical Education Department
Closed Until September.

Auto Owners!
We would be pleased to test your **Batteries Free** at any time and give you expert advice on the care of Batteries. When purchasing new batteries get our price. We can save you money.

MOTOR SHOP GARAGE
441 N. Jackson St. Roseburg.

USED CARS

Buick Roadster, 4-Cyl	1918 Mitchell, 6-Cyl
Overland Roadster, 4-Cyl	1919 Mitchell, 6-Cyl
Ford Touring	1½ Ton Chevrolet Truck, 4-Cyl

All in first-class shape, if you are looking for a good used car, call on us,

J. F. BARKER & CO.,
ROSEBURG, OREGON
IMPLEMENTS AUTOMOBILES TRACTORS

"LIBERTY" CAKE CUPS

These are the cups that you read of in "Good-Housekeeping", and from personal experience we can recommend them.

**They Save Greasing!
They Save Time and Labor!
No Gem Pans to Wash!
Cakes Keep Better—Fresher!
Just the thing for Auto Parties and Lunches.**

One Gross for 25 Cents, almost 6 for a Penny.
Get a Package, they will please you.

Churchill Hardware Co.
IRON MONGERS THE WINCHESTER STORE

LIQUID AND CAKE
THE BIG VALUE PACKAGES

2 IN 1 WHITE SHOE DRESSING

KEEP YOUR SHOES NEAT

for Women's Children's and Men's Shoes

THE FRED DALLEY CORPORATION, LTD., BUFFALO, N.Y.

WE SELL **Edison MAZDA LAMPS**

Douglas County Light and Water Co.