



We can prove it!

We can prove that this Western Electric Washer and Wringer

Will wash your clothes easier, quicker and cheaper than they are washed now. Further—that it will wash your clothes cleaner—without broken buttons—without the wear occasioned by the washboard and hard muscle. Will you give us a chance to prove it? In your home—at our store—anywhere!

TODAY!

**UHLIG'S ELECTRIC STORE**

Headquarters For All Electrical Supplies. 135 NORTH JACKSON ST. PHONE — 123.

### RAIN GENERAL THROUGHOUT STATE

Weekly Weather Report Shows Partial Relief From Drought.

### FROSTS ARE RECORDED

Temperature Above Normal on Average, But Several Mornings Sufficient Cold to Show Frost Which Caused Little or No Damage.

(The Associated Press.) PORTLAND, May 19.—Farm work progressed rapidly during the past week and light rain fell in nearly all parts of the state, partially relieving the drought, according to the weekly summary of weather and crop conditions, issued by the Oregon weather bureau here. The temperature was variable, averaging somewhat above normal in most sections but falling low enough several mornings to permit the formation of frost. Dry weather with abundant sunshine continued most of the week, attended at times by cold, desiccating northwest winds. Rain fell toward the close of the week. Snow in the mountains melted slowly and the flow of streams diminished. Cultivation of summer fallow land has been begun in Umatilla county.

Winter wheat is generally in good condition, the summary says. Rain was needed in most places. In places the stand of wheat is unusually thick, so that the moisture requirement is high. It is in the boot in Linn county and is heading in Douglas County. Rye is mostly headed and some is being cut for hay. The winter oats have done well. Seeding of spring wheat, oats and barley is complete over limited areas. On the whole the outlook for these crops is good but more rain is needed for best growth. Aphides are injuring oats in Polk county. Planting corn is progressing rapidly. Early corn is coming up well.

The heavy frosts of May fourth are found to have done considerable damage to cherries, prunes and apples in the eastern counties and to strawberries over most of the state. Other conditions, probably including earlier frosts rainy weather during blossoming, cold winds and perhaps the extreme dryness of the preceding season have conspired to cause a heavy drop of prunes and pears in several westerly counties. Strawberry are in market in Douglas and Lane counties.

Alfalfa is doing well, especially under irrigation, and in some warmer sections will soon be ready for the first cutting. Other hay crops are doing well but need more rain. The range is drying rapidly in places but in most parts of the state there is ample feed for all stock. Lambing and shearing continue under favorable conditions.

Planting of potatoes continues and early potatoes are growing fairly well. Potatoes and tender garden vegetables have been injured by frost in some of the colder sections.

#### FARMERS ATTENTION.

Why take chances on your corn crop? We have just bought 2000 pounds of seed corn, tested at Corvallis and grown in Douglas County, selected under the supervision of the county agricultural agent. Be sure and see this before you buy your seed corn. Peoples' Supply Company. 11

#### NOTICE G. A. R. & RELIEF CORPS

The members of Reno Post and Reno Relief Corps are requested to meet at the G. A. R. hall at the Armory, at 2 o'clock Thursday afternoon, May 22, for the purpose of making further arrangements for Memorial Day service, May 30. J. C. FULLERTON, m-21 Adjutant Reno Post.

#### NOTICE TO CONTRACTORS HIGHWAY CONSTRUCTION.

Douglas County, Oregon Sealed bids will be received by the county court of Douglas County, Oregon, at Roseburg, Douglas County, Oregon, at 2 o'clock p. m. on the 6th day of June 1919, for construction work on a section of road between Elkton and the SW corner of Lot 8, block 6, Plat "M" Sutherland Land and Water Company. The work involves approximately 1.4 miles of construction, the limits being more particularly described as from Engineer's Station 11 + 00 to Engineer's Station 85 + 50, or beginning at a point which bears N 56 degrees 40' W 2114 feet from the corner common to sections 19, 20, 23 and 30, Twp. 23 S., R. 6 W., W. M.

No bid will be considered unless accompanied by cash, bidder's bond or certified check for an amount equal to at least five per cent of the total amount of the bid.

A corporate surety bond will be required for the faithful performance of the contract in a sum equal to one-half the total amount of the bid. Plans, specifications, forms of contract, proposal, blanks, and full information for bidders may be obtained at the office of the clerk or county road-master, Douglas County, Oregon, upon the deposit of Five (5) Dollars.

The right is reserved to reject any and all proposals, or to accept the proposal or proposals deemed best for the County.

Dated May 9, 1919. By order of the Court, E. H. LENOX, County Clerk.

### COST OF LIVING IS DROPPING SLOWLY

National Industrial Conference Board Issues a Preliminary Statement.

The cost of living for American wage-earners declined less than 3 per cent during the period from signing of the armistice to the first week of March, 1919, according to a preliminary statement issued by the national industrial conference board. In March, 1919, the cost of living was still approximately 60 per cent to 65 per cent above the pre-war level, as contrasted with an increase of 65 per cent to 70 per cent in November, 1918, and of 50 per cent to 55 per cent in June, 1918, as brought out by the board's two previous studies of the subject.

Changes Since November, 1918. Changes since November, 1918, in the average cost of the different items entering into the budget were:

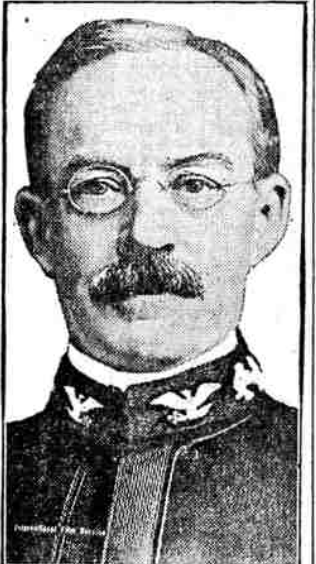
	Per cent.
All items	2.5 decrease
Food	4.4 decrease
Shelter	1.7 increase
Clothing	5.2 decrease
Fuel, heat and light	1.3 decrease
Sundries	No change

For the entire period July, 1914, to March, 1919, the increases in the respective items were:

	Per cent.
All items	61.3
Food	75
Shelter	22
Clothing	81
Fuel, heat and light	67
Sundries	65

In estimating the change in the budget as a whole the constituent items have been given the following relative importance: Food, 43 per cent of the total; shelter, 18 per cent; clothing, 13 per cent; fuel, heat and light, 6 per cent; sundries, 20 per cent. These percentages are averages of the actual expenditures of several thousand families, based on the results of investigations by authoritative agencies. While families differ in the apportionment of their incomes among the separate budget items, the distribution for normal families does not vary widely from these averages. Hence, with any reasonable allocation of items in the budget, changes in the total cost of living are fairly uniform, and an estimate of 60 per cent to 65 per cent as the increase between July, 1914, and March, 1919, is broadly representative.

### LEADS NAVAL FORCES IN FOREIGN WATERS



Admiral Harry S. Knapp, who succeeded Admiral William S. Sims as commander of our naval forces in foreign waters.

### COFFIN LEFT AS WARNING

"Black Handers" Threaten Death to Wesley Dumm of Cheyenne.

"Black Handers" are hot on the trail of Wesley I. Dumm, cashier of the Citizens' National bank of Cheyenne, Wyo. Several days ago they left a note instructing him to place \$50,000 at the foot of the elevator in the bank building. If he failed to comply with the demand the "black hand" note declared the bank would be dynamited, his home wrecked and Dumm would be killed. Dumm placed a dummy package which was stolen while detectives were away from the bank for breakfast.

Later Dumm received a telephone call in which a man made the same demand and threat contained in the letter. He disregarded it and when he went home found a child's glass coffin on his porch. Police are guarding the bank and the home.

### Bottle Causes Undoing.

A bottle of whisky alleged to have been dropped from the overcoat pocket of Henry Parry of Philadelphia, an elevator adjuster employed at the Hotel Adelphi as he was leaving, led to the discovery that he had a false pocket in the overcoat. Steaks, pork chops, ketchup and sausage, which he was alleged to have confessed he stole from the kitchen, were found in the pocket. Parry was arrested and was held under \$800 bail in the city hall police court for a further hearing. He said he had been employed two years in the hotel.

### "Berries and Salmon Chase Away Famine"

# 9th Annual Strawberry Carnival and Sportsmen's Tournament

**BIG!** Roseburg does it right, you know!

# MAY 23, 24

### H. J. DENN TRANSFER COMPANY

Wood, Lime and Oregon Cement

Phone 128. Cor. Oak and Main.



### Notice to Horsemen

The Shire stallion OREGON will be at the Empiro barn Friday and Saturday, April 18 and 19. The manager of this horse has just returned from the army and will make regular trips for the season, beginning with above dates.

### E. A. Kruse & Sons OWNERS



Pork; Krop. If pleased you'd be With the meat you buy For beef to roast or pork to fry Beef and pork our leading crop. You'll find us always on the hop. Scrupulously clean, we use the mop.

### TRADE HERE.

**THE ECONOMY MARKET**

Geo. Kohlhaugen, Prop. Phone 58

### "It All Comes Out In the Wash"

True enough; but if you have to rub the life out of the garment where is the gain? Better let us steam it out and save the garment.

### ROSEBURG STEAM LAUNDRY

PHONE 79 LAST WASH THURSDAY NOON.

### Meritol TONIC DIGESTIVE

A serious loss is loss of appetite. If you are run down, can't eat, no appetite, you need Meritol Tonic Digestive. It improves the appetite, is an aid to weak stomachs, tones up the system, and gives strength and vigor to the body. If you are feeling "all run down" try a treatment of this tonic. Sold only by us. \$1.00 the bottle.

CHAPMAN'S PHARMACY, Roseburg, Oregon



### Want the Best

We carry in stock the best in Pianos and Phonographs, just received a shipment of Ivers & Pond uprights and grands, all that we ask of you is your most critical comparison of our Pianos with others, regardless of name, price or reputation. Ivers & Pond Upright and Grands. Cable Nelson Pianos and Player Pianos. Ellington Pianos and Player Pianos. Howard, Hamilton, Lyon & Healy and other well known makes. Sold on easy payments. Victrolas, Edison and Pathé Phonographs.

### OTT'S MUSIC STORE

ROSEBURG, OREGON.

### Sutherland Fruit Products

#### COMPANY

We will have our plant completed about June 1st, and will pay the going market price for all supplies. We are now ready to contract for Loganberries, Royal Ann Cherries and Bartlett Pears.

Sutherland Fruit Products Company

### ANNOUNCEMENT!

We have opened up a cream buying station with the Vosburgh Bros. Poultry Market, where we will take hand or separator cream and will weigh, test and pay cash. You don't have to wait a month for your pay.

### HAZELWOOD CO.

VOSBURGH BROTHERS, Agents 507 N. Jackson Street, Roseburg

### Are You Hunting for the Easy Way to Keep House?

Try the **ELECTRIC** Way

Douglas County Light and Water Co.

Agency Buick, Chevrolet Scripp-Booth Touring Cars G. M. C. & Chevrolet Trucks Samson Tractors

Batteries Rebuilt and Recharged. Fully Equipped Machine Shop. Tires and Tubes, all sizes. Full Line of Supplies.

### MOTOR SHOP GARAGE

444 N. JACKSON STREET ROSEBURG, OREGON.