

"SWIVEL CHAIR PILOTS" REPLACED BY EXPERTS IN U. S. ARMY AERIAL WORK



Lieut. Thomas D. Milling (top left), Lieut. Col. George O. Squier (bottom left), and Lieut. Col. Reber.

The "swivel chair pilots" of the army aerial service, led by Lieut. Col. Samuel Reber, are to be replaced by skilled aviators, according to a positive statement made by war department officials. It is considered likely that Lieut. Col. George O. Squier will succeed Col. Reber. An important new figure on the aviation board will be Lieut. Thomas D. Milling, probably the most skillful pilot in the U. S. aerial service.

COUNTY COURT SELECTS BOARDS OF ELECTION

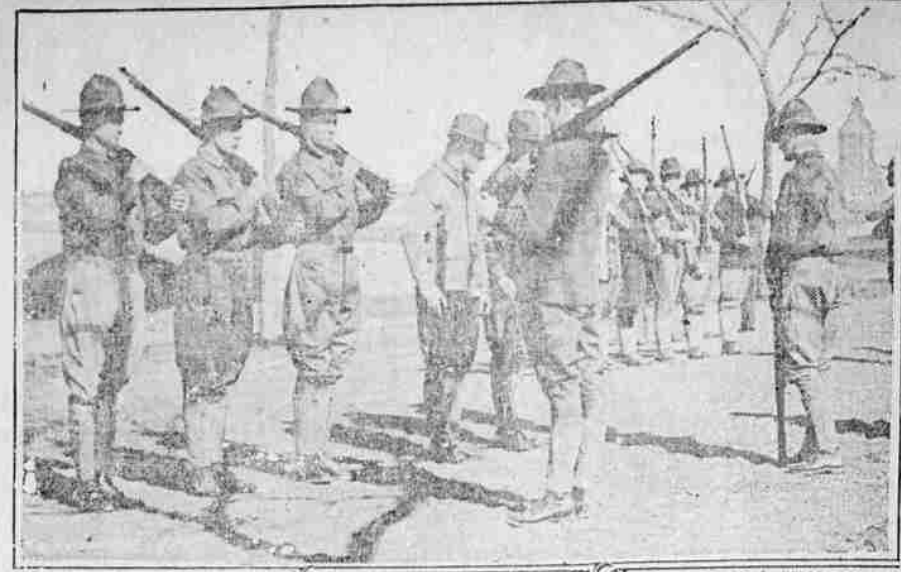
- Applegate.**
Judges—Wm. Kietzer, Rep.; F. M. Batchelor, Dem. Clerks—Leo S. Wertz, Dem.; Geo. Harshbarger, Rep.; Henry Burt, Rep.
- Benson.**
Judges—J. H. Clark, Rep. W. C. Grounds, Dem. Clerks—H. C. Darby, Dem.; Lyman L. Spencer, Rep.; Mrs. Cora Church, Rep.
- Bellows.**
Judges—J. M. Fletcher, Rep.; J. R. Wharton, Dem. Clerks—Clara Crawford, Dem.; Mary Swinney, Rep.; Jeanie Bulck, Rep.
- Camas Valley.**
Judges—J. M. Thompson, Dem.; C. M. Wilson, Rep. Clerks—Wilfred Brown, Rep.; Cynthia Lange, Dem.; R. W. Dick, Rep.
- Canyonville.**
1st Board. Judges—O. H. Beyers, Rep.; J. T. McGee, Dem. Clerks—Chan. Cook, Dem.; C. O. Bartley, Rep.; J. A. Hopkins, Rep. 2nd Board. Judges—W. R. Stock, Rep.; Thos. Wilson, Dem. Clerks—J. L. Boyle, Dem.; John J. Fallin, Rep.; J. O'Neil, Rep.
- Civil Bend.**
Judges, G. A. Bradburn, Rep; Saml A. Roser, Dem. Clerks—Loren Mill et, Dem.; Robt. Kent, Rep.; I. B. Thompson, Rep.

- Coles Valley.**
Judges—J. L. Winniford, Dem.; Wm. Kamp, Rep. Clerks—Loyal V. Emery, Rep.; Frank Gorrell, Dem.; E. P. Palmer, Rep.
- Comstock.**
Judges—H. H. Russell, Rep.; Wm. Skidmore, Dem. Clerks—Walter Skidmore, Dem.; W. C. Henderer, Rep.; P. A. Anlauf, Rep.
- Cow Creek.**
Judges—J. R. Gilham, Rep.; J. R. Throne, Dem. Clerks—O. P. McGee, Dem.; E. E. Wilson, Rep.; J. R. Pickett, Rep.
- Caro.**
1st Board. Judges—J. G. Belleu, Dem.; W. C. Pickens, Rep. Clerks—R. L. Gile, Rep.; Mrs. Nellie Jope, Rep.; J. P. McKay, Dem. 2nd Board. Judges—R. E. Jope, Rep.; Mrs. E. A. Shuey, Dem. Clerks—G. D. Gage, Dem.; Benj. Caro, Rep.; Corrine C. Alley, Rep.
- Calapooia.**
1st Board. Judges—C. L. Hamilton, Dem.; M. T. Riggs, Rep. Clerks—Geo. Wilcox, Rep.; Elmer Goodman, Dem.; H. L. Kruse, Rep. 2nd Board. Judges—J. M. Davison, Rep.; Inadore E. Rice, Clerks—E. L. Settle, Dem.; J. F. Whitney, Rep.; Frank Churchill, Rep.
- Days Creek.**
Judges—W. H. Raymond, Rep. Joe Snyder, Dem. Clerks—Huron Clough

Dem.; Chas. Hanks, Rep; Percy L. Beals, Rep.

- Deer Creek.**
1st Board. Judges—F. W. Dillard, Dem.; C. W. Parrott, Rep. Clerks—Clark L. Bargar, Rep.; F. A. Bemis, Rep.; Maud E. Parks, Dem. 2nd Board—Judges, P. M. Matthews, Rep.; W. W. Thacker, Dem. Clerks—F. C. Fitzpatrick, Dem.; Harry Kenny, Rep.; P. E. Foster, Rep.
- Dixonville.**
Judges—John McKean, Dem.; Herbert Gilliam, Rep. Clerks—R. L. McLaughlin, Rep.; A. H. Kropel, Dem.; C. E. Bennig, Rep.
- Drain.**
1st Board. Judges—C. E. Hasard, Rep.; C. W. Burrows, Dem. Clerks—Lester L. Wimberly, Dem.; Mollie Mattoon, Dem.; Eunice Post, Rep. 2nd Board. Judges—C. M. Rush, F. A. Raymond, Prohl. Clerks—T. V. Edwards, Ind.; H. A. Cool, Rep.; Lawrence Newton, Rep.
- Drew.**
Judges—C. W. Jackson, Rep.; I. J. Norman, Dem. Clerks—Walter Rainville, Dem.; Claud Short, Rep.; Mose Tison, Rep.
- East Umpqua.**
Judges—Charles F. Wharton, Rep.; G. W. Shrum, Dem. Clerks—Wm. H. Bond, Dem.; Seth T. Mathews, Rep.; Leslie Lilly, Rep.
- Edenbower.**
1st Board. Judges—S. A. Sanford, Dem.; S. D. Cooley, Rep. Clerks—Gordon Stewart, Rep.; Fred Flaher, Dem.; E. G. Cloake, Rep. 2nd Board. Judges—F. D. Owen, Rep.; R. J. Farnsworth, Dem. Clerks—Edgar A. Miller, Dem.; L. J. Houser, Rep.; C. E. Merks, Rep.
- Elkton.**
1st Board. Judges—J. J. Henderer, Rep.; H. A. Taylor, Dem. Clerks—Clyde Beckley, Dem.; Walter Haines, Rep.; F. W. Binder, Rep. 2nd Board. Judges—R. R. Wells, Dem.; C. R. Franklin, Rep. Clerks—A. R. McDonald, Rep.; C. A. Clements, Dem.; Robt. Grubbe, Rep.
- Elkhead.**
Judges—Albert W. Cockeram, Rep.; John D. Wilson, Dem. Clerks—Robert Bradford, Dem.; Geo. S. Wilson, Ind.; F. C. Dunlap, Rep.
- Gardiner.**
1st Board. Judges—Henry Sagarber, Dem.; J. S. Gray, Rep. Clerks—Fred Assenheimer, Rep.; J. H. Austin, Dem.; I. M. Smiley, Rep. 2nd Board. Judges, Chas. Henderson, D.; Jacob R. Rush, Rep. Clerks—W. H. Jewett, Rep.; C. R. Allen, Rep. Earl Fiekle, Dem.
- Glendale.**
1st Board. Judges—S. H. Rothemel, Rep.; J. A. Jacques, Dem. Clerks—J. K. Howard, Dem.; Fred C. McGregor, Rep.; Lawrence Neuner, Rep. 2nd Board. Judge—T. E. Lawson, Rep.; D. B. Redford, Dem.; Clerks—J. Harding, Dem.; H. R. Marsh, Rep.; Billie Brown, Rep.
- Green.**
Judges—L. W. Groves, Rep.; John Lander, Dem. Clerks—J. J. Betts, Dem.; F. G. Hatfield, Rep.; L. M. An Auker, Rep.
- Gunter.**
Judges—Geo. Hardenbrook, Rep.; J. O. Gunter, Dem. Clerks—Paul A. Gunter, Dem.; Eva Woolley, Prohl.; Arthur Woolley, Prohl.
- Hamilton.**
Judges—A. D. Hawn, Rep.; Geo. Neuner, Sr., Dem. Clerks—Victor Micelli, Dem.; A. J. Lilburn, Rep.; John E. Runyan, Rep.
- Hermann.**
1st Board. Judges—H. J. Denn, Dem.; A. S. Hoey, Rep. Clerks—Mary A. Hicks, Rep.; Ployd C. Frerar, Rep.; F. T. Perry, Dem. 2nd Board. Judges—M. F. Rice, Rep.; James Ewart, Dem. Clerks—Earl Strong, Dem.; W. F. Harris, Rep.; R. R. Elmore, Rep.
- Happy Valley.**
Judges, A. M. Arlington, D.; Frank Steinhauer, Rep. Clerks—Lyle Marsters, Rep.; A. F. Hoffman, Dem.; John Moore, Rep.
- Kellogg.**
Judges—F. S. Weatherly, Rep.; J. R. Hutchinson, Dem. Clerks. Roy Fisher, Dem.; W. A. Peters, Rep.; F. E. Bullock, Dem.
- Looking Glass.**
Judges—Thomas Morgan, Dem.; Geo. B. Best, Rep.; Clerks—J. H. Marsters, Rep.; W. G. Rochester, Dem.; Luella Clingenpeel, Rep.
- Lane.**
1st Board. Judges—M. L. Webb, Rep.; Pennie A. Wright, Dem. Clerks—Lula J. Venson, Dem.; Carl W. Ohman, Rep.; J. C. Dalrymple, Rep. 2nd Board. Judges—Roy Roadman, Dem.; J. O. Metz, Rep. Clerks—J. O. Newland, Rep.; O. L. Johnson, Rep.; D. C. Humphrey, Dem.
- Melrose.**
Judges—A. E. Clayton, Dem.; Thos. Scott, Rep. Clerks—R. A. Bensenark, Rep.; C. E. Fredrickson, Dem.; H. R. Conn, Rep.
- Millwood.**
Judges—A. L. Black, Dem.; B. B. Sutton, Rep. Clerks—R. B. Clarke, Rep.; Jennie M. Norman, Rep.; Catherine Moly, Dem.
- Mt. Scott.**
Judges—S. M. Britt, Rep.; H. D.

HARVARD LEADS U. S. COLLEGES IN PREPAREDNESS MOVEMENT



Harvard University students drilling outdoors for first time. Harvard University was among the first of the colleges to form a company of students into a semi-military body. Since its incorporation the members have devoted much of their spare time to drilling and going through manoeuvres, preparing for any emergency in which their training and knowledge may be of service. Many of the colleges throughout the United States have organized similar corps.

- Connise, Dem. Clerks—W. J. Thornton, Dem.; O. K. McCurtain, Rep.; Victor A. Blakely, Rep.**
- North Myrtle.**
1st Board. Judges—Chas. Holland, Rep.; W. N. Moore, Dem. Clerks—T. C. Waite, Dem.; M. F. Dickson, Rep.; A. M. Dalley, Dem. 2nd Board. Judges—E. Bond, Rep.; Thos. Brower, Dem. Clerks—Joe Rice, Dem.; R. D. Way, Rep.; V. C. Dunnavin, Rep.
- South Myrtle.**
1st Board. Judges—C. A. Stelzier, Rep.; S. B. Knight, Dem. Clerks—J. T. Black, Dem.; O. E. Stephens, Rep.; Robt. Nest, Rep. 2nd Board. Judges—C. Weaver, Rep.; C. A. Strong, Dem. Clerks—J. M. Ledgerwood, Dem.; H. W. Hermann, Rep. H. G. Ackert, Rep.
- Mill.**
Judges—Walter Singleton, Dem.; R. P. McLendon, Rep. Clerks—Cynthia Germond, Rep.; P. H. Black, Dem.; E. M. Atterbury, Rep.
- Nichols.**
Judges—W. L. Nichols, Rep.; P. E. Cornutt, Dem. Clerks—F. Cornutt, Dem.; Kenneth Quine, Rep.; Geo. Frater, Rep.
- Oakland.**
1st Board, Judges—C. A. Stevens, Rep.; A. A. Smith, Dem. Clerks—L. D. Pinkston, Dem.; Mrs. Emma Leeper, Rep.; C. C. Hickman, Rep. 2nd Board. Judges—C. L. Chenoweth, Dem.; A. G. Young, Rep. Clerks—R. D. Bridges, Rep.; Edwin Stearns, Rep.; A. A. Thiel, Dem.
- Olalla.**
Judges—Fred Byron, Dem.; E. H.

FOR SALE.
West Side Grocery. All stock, fixtures, horse, wagon.
E. C. BENSON
Receiver.
Room 4, Com. Club Building.
331-14

STOP AT THE GRAND HOTEL
CASS STREET ROSEBURG

For Muscular Development!

The trained Athlete isn't in it with the amateur who's just out for spring practice.

Use Rexall Rubbing Oil for such sudden developments of sore muscles.

NATHAN FULLERTON
Perkins Building.

The Rexall Store

Implements!

WE HAVE PURCHASED THE STOCK OF IMPLEMENTS AND VEHICLES FORMERLY OWNED BY CROUCH & GILES, CONSISTING OF BUGGIES, WAGONS, PLOWS, DISC HARROWS CULTIVATORS, ETC.

WHILE THIS STOCK LASTS WE WILL SELL IT AT

Less Than Wholesale Cost

IT WILL PAY YOU TO INVESTIGATE

J. F. BARKER & CO.
IMPLEMENT AND VEHICLES.

GET a Graphanola Now and have Easter Music in your home.

Columbia Records
Note the Notes

On a Graphanola the beautiful Easter numbers are not confined to Easter alone—You can hear them whenever and as often as you wish.

Roseburg Furniture Co.

CLEANING PRESSING REPAIRING

You have been passing our establishment daily and no doubt noticed that we do expert work. You have concluded to bring in that suit which really needs our attention, but have neglected to do so.

LET US SAVE YOU THE TROUBLE

Phone us right now. We call for and deliver. No extra charge.

IMPERIAL CLEANERS
342 N. Jackson St. Phone 277

Why are Sunday dinners usually the best?

Meats for Sunday Dinners
Our Long Suit

A LIBERAL AMOUNT OF SUET WITH EACH FINE ROAST THAT SUITS EVERY GOOD COOK, AMONG OUR ROASTS ARE OUR SUNDAY ROASTS. THEY SHOULD GRACE YOUR TABLES.

THE ECONOMY MARKET

CASTORIA
For Infants and Children.

Mothers Know That Genuine Castoria

Always Bears the Signature of *Chas. H. Fletcher*

Use For Over Thirty Years

CASTORIA

Net Contents 15 Fluid Drachms
900 DROPS

CASTORIA

ALCOHOL—3 PER CENT
A Vegetable Preparation which assimilates the Food and Regulates the Stomach and Bowels of

INFANTS & CHILDREN

Promotes Digestion, Cheerfulness and Rest. Contains neither Opium, Morphine nor Mineral. NOT NARCOTIC.

Signature of CHAS. H. FLETCHER

A Perfect Remedy for Constipation, Sour Stomach, Diarrhoea, Worms, Feverishness and LOSS OF SLEEP

THE CENTRAL COMPANY
NEW YORK.

AT 6 months old
35 Doses—35 CENTS

Exact Copy of Wrapper.

THE CENTRAL COMPANY, NEW YORK CITY.