

Excursion Fares

Via the Exposition

To the East

Every day until September 30th
Good for return until October 31st

Why not get the most for your money? Why not take in two wonderful world Expositions at San Francisco and San Diego enroute to the East? The world has never before produced the equal of the Panama Pacific Exposition. The like probably will never be attempted again.

Scenery enroute is magnificent. Automatic Safety signals guard the way. Four fine trains a day Portland to San Francisco connecting at San Francisco for the South and East.

Let us send you our illustrated folders "Wayside Notes" and "California and Its Two World Expositions"

SOUTHERN PACIFIC

Our local agent will take pleasure in outlining an itinerary and furnish full information or you may address

John M. Scott, General Passenger Agent, Portland, Oregon.

CITY NEWS.

A good investment. Klondike nuggets, at the Rose. 859-a19

Will Holmes returned today from business trip to Tacoma.

Mr. and Mrs. L. D. Chase left this morning for Salem where they will visit for a couple of weeks.

Amy Marsters returned last night from Aberdeen where she has been visiting for the past two weeks.

Sport shirts in plain white and cream Soisette, with tie of contrasting color. See them at Harth's Toggery. 862-a21

Frank Sparks, who has been visiting at the home of W. S. Powell returned to his home at Oakland this afternoon.

H. J. Stone and wife left last night for Portland where they will visit with their daughter for a week or ten days.

F. F. Yockey and wife who have been visiting at the home of John Runyan left this morning for their home at Grants Pass.

R. R. Turner, of the local land office, left this morning for Grants where he will spend a couple of days attending to business matters.

Have you an autographic back? Bring your Kodak to us and we will make it up to date by putting on an autographic back. Roseburg Book Store. daw-810-1f

Mrs. E. J. Murphy and Miss Clara Murphy, of St. Paul, Minn., who have been visiting A. T. Lawrence, at the Sunshine ranch, left this morning for Portland where they will visit for a short time.

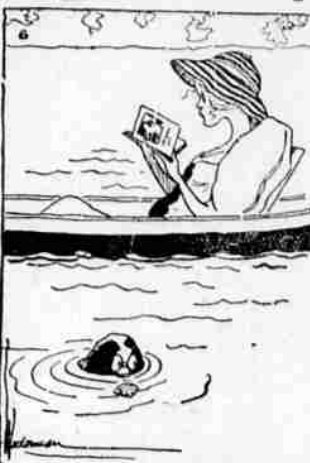
T. N. Cornutt reports his prune crop in excellent shape. While his orchard is not as full as it has been other seasons the fruit is of good size, and he is looking for a yield of some 1500 bushels.—Myrtle Creek Mail.

The very highest quality coffee. Freshly roasted and packed, direct to you; less the cost of expensive advertising, fancy containers and excessive profit. P. S. C. Steel Cut Coffee at 35c. At the People's Supply Co. 865-a25

W. T. Wright and wife Fannie Campbell and Harold Joep returned last night from Portland where they have been spending a couple of weeks. The trip was made in Mr. Wright's auto and the party report a splendid trip over good roads.

W. C. Lea and family, of Drain, arrived in this city today, and will spend a short time visiting here. Mr. Lea is the city superintendent of schools at Drain and was formerly a teacher in the high school of this city.

The Young Lady Across The Way



The young lady across the way says she saw in the paper that The City Beautiful was a Utopian dream, but she certainly thinks we have some very pretty towns in this country, too.

Goes further, tastes better, costs you less; the best for 35c. Why buy more? P. S. C. Steel Cut Coffee. You will like it. People's Supply Co. 865-a25

FOR CITY TREASURER

I hereby announce myself as a candidate for city treasurer of Roseburg at the election to be held October 4, 1915. MRS. CORINNE C. ALLEY, pd-ad-851-02

Our 5-lb. air-tight tin at 35¢ a pound



The Famous M.J.B. Coffee

Our Guarantee

Your Grocer will refund the full price you paid for M.J.B. Coffee, if it does not please your taste, no matter how much you have used out of the can.

AWARDED GOLD MEDAL AT PANAMA-PACIFIC INTERNATIONAL EXPOSITION

Order a 5-lb. Tin Today

Meats of QUALITY

Extra care is given to the selection of our meats with the result that none but the most tender cuts go to our customers

Roseburg Sanitary Market
Newhard Bros.
Cass Street

PURE-FOOD GROCERIES



SOME OF OUR SPECIALS

Fresh Cream and Milk on Ice
High Test
California Redlands "Rose" Brand Oranges and bright Florida Grape Fruit.

Everything the market affords in vegetables, fresh every morning

The Bee Hive Grocery

Phone 91

YOU ARE SURE OF A GOOD TIME AT

NEWPORT

All round Seashore Resort on Yaquina Bay and the Pacific Ocean. A Place of Charm and Beauty. A delightfully Restful atmosphere.

Newport offers wide variety of recreations and entertainments. There are plenty of hotels, boarding houses, cottages and camping accommodations.

Newport is an ideal place to send the family. Our illustrated folder "Newport" will interest you. A postal card will bring it.

LOW ROUND TRIP FARES from all points on

Southern Pacific

Two trains a day from Albany

Inquiries for tickets and information will receive courteous attention from our nearest agent.

The WEST SIDE GROCERY

WE HAVE A LARGE LINE OF STAPLE AND FANCY GROCERIES AND THE PRICES ARE RIGHT. SERVICE PROMPT AND COURTEOUS. WE DELIVER GOODS WHEN YOU SAY YOU WANT THEM. NOT HOURS AFTER YOU NEED THEM. WE ARE HERE TO SERVE YOU AND WE SERVE YOU RIGHT

Phone Two-Nine DOWELL & BENEDICK West Roseburg

Let me send you FREE PERFUME Write today for a testing bottle of

ED. PINAUD'S LILAC

The world's most famous perfume, every drop as sweet as the living blossom. For handkerchiefs, atomizer and bath. Fine after shaving. All the value is in the perfume—you don't pay extra for a fancy bottle. The quality is wonderful. The price only 75c. for a 4 oz. bottle. Send for the little bottle—enough for 50 handkerchiefs. Write today.

PARFUMERIE ED. PINAUD, Department M. ED. PINAUD BUILDING NEW YORK

The Secret of a Good Figure

often lies in the braids. Hundreds of thousands of women wear the Ben-Jolie Braiders for the reason that they round it as nicely as a corset. It supports the bust and back and gives the figure the youthful outline of fashion delects.

are the daintiest, most serviceable garments imaginable. Only the best of materials are used—for instance, "Washin", a flexible lining of great durability—absolutely rustless—permitting laundering without removal.

They come in all styles, and your local Dry Goods dealer will show them to you on request. If it does not carry them, he can easily get them for you by writing to us. Send for an illustrated booklet showing styles and prices at high favor.

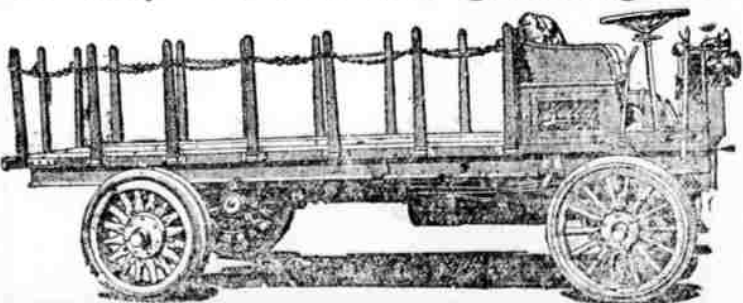
BENJAMIN & JOHNES
50 Warren Street Newark, N. J.

Eliminate Heat and Steam From Your Kitchen This Hot Weather

Roseburg Steam Laundry

Will do the Work for You
Just Call Phone 79

Let "Kelly" Do Your Moving, Hauling and Transferring



The French Transfer Company
Phone 220