

# Excursion Fares

Via the Exposition  
To the East

Every day until September 30th  
Good for return until October 31st

Why not get the most for your money? Why not take in two wonderful world Expositions at San Francisco and San Diego enroute to the East? The world has never before produced the equal of the Panama Pacific Exposition. The like probably will never be attempted again.

Scenery enroute is magnificent. Automatic Safety signals guard the way. Four fine trains a day Portland to San Francisco connecting at San Francisco for the South and East.

Let us send you our illustrated folders "Wayside Notes" and "California and Its Two World Expositions"

## SOUTHERN PACIFIC

Our local agent will take pleasure in outlining an itinerary and furnish full information or you may address

John M. Scott, General Passenger Agent, Portland, Oregon.

### CITY NEWS.

A good investment. Klondike nuggets, at the Rose. 859-a19

Miss Elois Barnard, of Eugene, arrived in this city last night for a visit with her many friends here.

From the recipe of a French confectioner Rum Center chocolates. The Rose. 859-a19

Mrs. T. E. Strode returned to her home at Myrtle Creek this morning after a visit with friends and relatives in this city.

J. T. and A. T. Moyer, who have been visiting in this city, returned this morning to their home at Crescent City.

G. W. Ryan left this morning for Myrtle Creek where he will spend a few days looking after business matters.

Mr. and Mrs. G. S. Adams left this morning for Des Moines, Iowa, where they will spend a few weeks visiting with relatives.

Mr. and Mrs. S. W. Condon left this morning for San Francisco where they will spend two or three weeks attending the exposition.

Col. J. T. May, superintendent of the S. P. railroad, returned to his home in this city last night, after several days spent attending to business matters in Portland.

W. H. Evans left this morning for Portland where he will spend several days looking after business matters connected with the Dodge Motor Car Company.

Mayor Rice, wife and daughter, and Dr. Copestake, returned today from an auto trip to Crater lake, Josephine caves and other points of interest where they have been spending a couple of weeks enjoying their vacation.

Mrs. Geo. Thompson, of Eugene, arrived in this city today for a visit with friends. She was accompanied by little Stanley Crouch, who will visit at the home of Mrs. F. J. Jost for a few days.

### HORSES WANTED.

Will be in Roseburg Saturday, August 23, to buy horses and mares, any color except grey; weight 1100 to 1500 pounds and must be in good flesh, heavy form, blocky type, 5 to 9 years old. EARL S. McNUTT, 852-a19p

FOR RENT—Modern 6-room house on paved street in good locality. Call phone 15F12. 854-a22

TO EXCHANGE—Lumber for wood. Address with particulars 848 News office. 848-1f

FOR SALE—Several head of fresh milk cows, for prices and particulars call phone 6F15. 858-a30p

### WILL TEACH WOMEN NEED FOR U. S. DEFENSE



MRS. MATTHEW T. SCOTT OF BLOOMINGTON, ILL., FORMER PRESIDENT OF THE D. A. R., WHO HAS BECOME A MEMBER OF THE WOMAN'S SECTION OF THE NAVY LEAGUE OF THE UNITED STATES, WHICH IS PLEDGED TO EDUCATE WOMEN REGARDING THE NEEDS FOR NATIONAL DEFENSE.

### FOR CITY TREASURER

I hereby announce myself as a candidate for city treasurer of Roseburg at the election to be held October 4, 1915. MRS. CORINNE C. ALLEY, pd-ad-851-03

## PURE-FOOD GROCERIES



SOME OF OUR SPECIALS

Fresh Cream and Milk on Ice  
High Test

California Redlands "Rose" Brand Oranges and bright Florida Grape Fruit.

Everything the market affords in vegetables, fresh every morning

The Bee Hive Grocery  
Phone 91

### CITY NEWS.

For flash lights see the Electric Store. 861-1f

Alina Hagen left this morning for a visit with friends and relatives at Portland and Hillsboro.

Mrs. T. A. Sagaberd and daughter left this morning for a visit with friends and relatives at Wilbur.

Mrs. T. W. Newland and daughter, Beatrice, left this morning for a visit with Mrs. J. C. Clark, at Portland.

Harriet Gaylord, who has been visiting at the home of L. A. Ueland, returned this morning to her home at Portland.

W. G. Hill and wife, who have been visiting with O. C. Brown, returned this morning to their home at Wilbur.

Alta Woodridge, who has been visiting with friends in this city, left this morning for her home at Alpine.

Miss Mae Tobler, who has been visiting with her brother H. J. Tobler, returned this morning to her home at Vancouver.

Have you an autograph back? Bring your Kodak to us and we will make it up to date by putting on an autograph back. Roseburg Book Store. ds-w-810-1f

Mrs. G. F. McLoughlin left this morning for a visit with relatives at Grants Pass.

Do not forget the ice cream social at the residence and lawn of A. C. Marsters this evening.

Mrs. J. E. Enger left this morning for Medford where she will spend a week or ten days visiting with friends and relatives.

Jessie and Maggie Bound, who have been visiting in this city for the past few days, returned to their home at Dufe this morning.

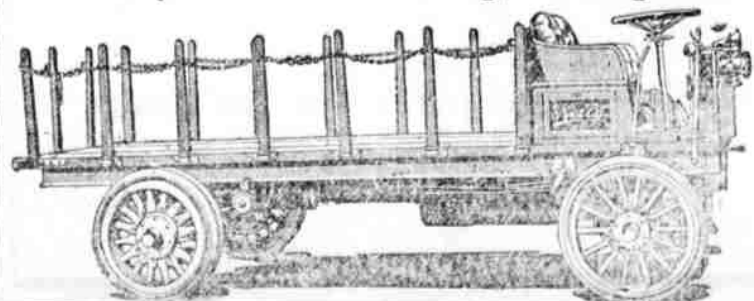
Lawn fete and ice cream social at the residence of Mrs. A. C. Marsters this evening, under the auspices of the W. C. T. U. Everybody invited and will be made welcome.

Early Crawford peaches, orchard run, this week 50c per bushel at orchard. Edenbower Orchard Tracts. Phone 26F2. 857-a21

A slight accident happened at the depot this morning while the express car was being loaded. A truck load of tomatoes had been placed at the door of the car when a freight train passed by on the track next to the passenger train. As the truck was heavily loaded it did not give the necessary clearance, one of the freight cars catching a corner of the truck and forcing it against the passenger coach, spilling the tomatoes over the track, besides breaking the truck and damaging an air tank on the passenger coach.

Eliminate Heat and Steam From  
Your Kitchen This Hot Weather  
Roseburg Steam Laundry  
Will do the Work for You  
Just Call Phone 79

Let "Kelly" Do Your Moving, Hauling and Transferring



The French Transfer Company  
Phone 220

Our 5lb. air-tight tin at

35¢ a pound

The Famous M.J.B. Coffee

Our Guarantee  
Your Grocer will refund the full price you paid for M.J.B. Coffee, if it does not please your taste, no matter how much you have used out of the can.

AWARDED GOLD MEDAL AT PANAMA-PACIFIC INTERNATIONAL EXPOSITION

Order a 5-lb. Tin Today

Meats of QUALITY

Extra care is given to the selection of our meats with the result that none but the most tender cuts go to our customers

Roseburg Sanitary Market  
Newhard Bros.  
Cass Street

YOU ARE SURE OF A GOOD TIME

AT

## NEWPORT

All round Seashore Resort on Yaquina Bay and the Pacific Ocean. A Place of Charm and Beauty. A delightfully Restful atmosphere.

Newport offers wide variety of recreations and entertainments. There are plenty of hotels, boarding houses, cottages and camping accommodations.

Newport is an ideal place to send the family. Our illustrated folder "Newport" will interest you. A postal card will bring it.

LOW ROUND TRIP FARES

from all points on

Southern Pacific

Two trains a day from Albany

Inquiries for tickets and information will receive courteous attention from our nearest agent.

## The WEST SIDE GROCERY

WE HAVE A LARGE LINE OF STAPLE AND FANCY GROCERIES AND THE PRICES ARE RIGHT. SERVICE PROMPT AND COURTEOUS. WE DELIVER GOODS WHEN YOU SAY YOU WANT THEM. NOT HOURS AFTER YOU NEED THEM. WE ARE HERE TO SERVE YOU AND WE SERVE YOU RIGHT.

Phone Two-Nine DOWELL & BENEDICK West Roseburg



Let me send you FREE PERFUME  
Write today for a testing bottle of  
ED. PINAUD'S LILAC

The world's most famous perfume, every drop as sweet as the living blossom. For handkerchiefs, atomizer and bath. Fine after shaving. All the value is in the perfume—don't pay extra for a fancy bottle. The quality is wonderful. The price only 75c. (6 oz.). Send 1c. for the little bottle—enough for 50 handkerchiefs. Write today.  
PARFUMERIE ED. PINAUD, Department M, ED. PINAUD BUILDING NEW YORK



The Secret of a Good Figure

After 125 years in the business, hundreds of thousands of women wear the Bi-Jolie Beauty Cream for the reason that they regard it as necessary as a cream. It smooths the skin and keeps it soft and supple. It keeps the youthful outline fresh and clear. It is the dearest, best and most valuable beauty cream. Only the best of materials are used in its preparation. "Bi-Jolie" is the result of a long and careful study of the most perfect beauty cream—perfectly innocuous without result.  
They come in all styles, and your local Bi-Jolie Dealer will show them to you on request. If you are in a hurry they can be sent you from 1 to 5 dollars by calling for an illustrated booklet showing styles and prices. High Test.  
BENJAMIN & JOHNS  
50 Warren Street Newark, N. J.