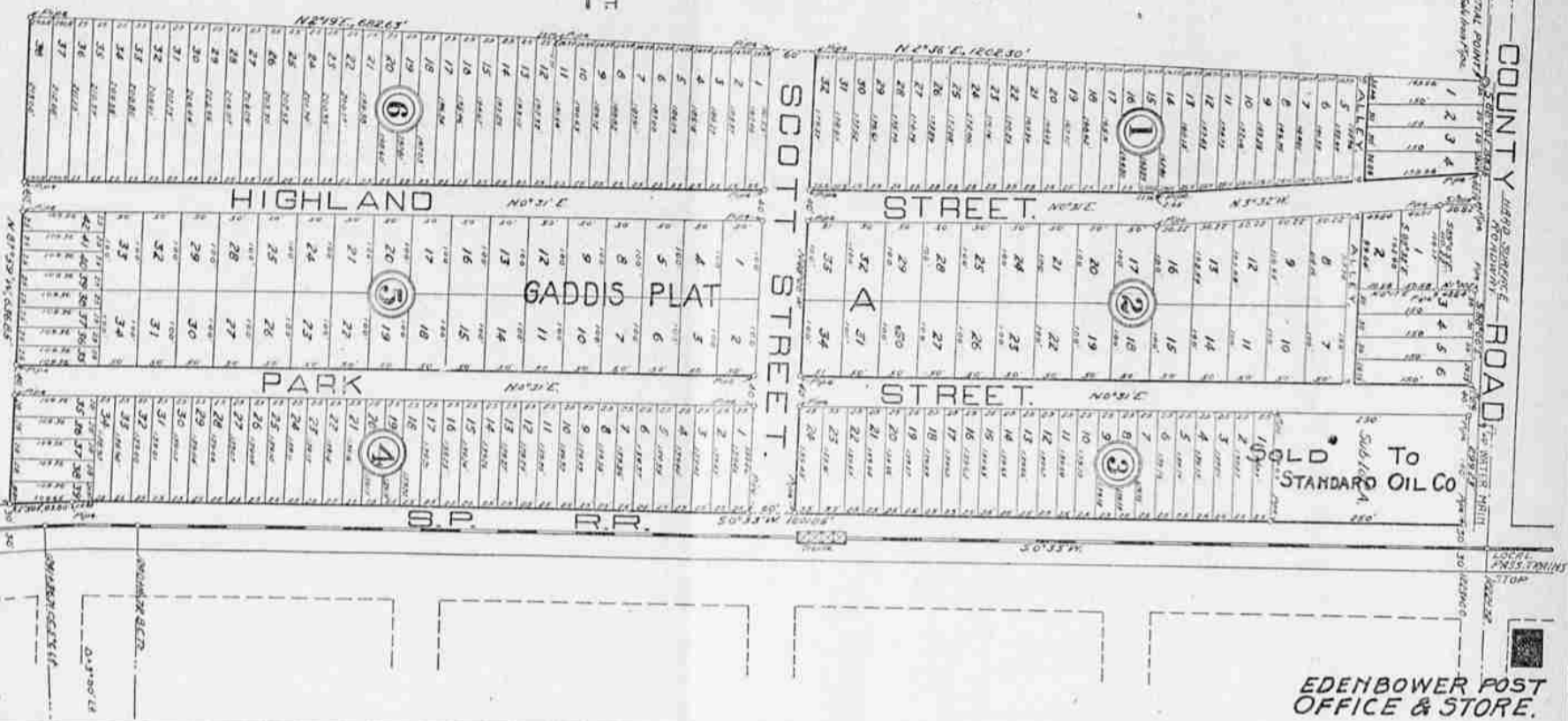
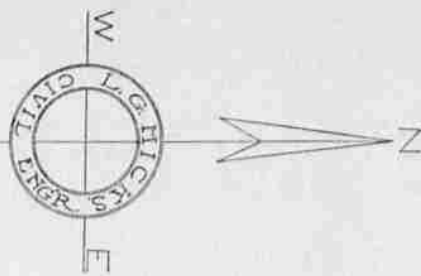


GADDIS PLAT "A"

SCALE: 1"=100 FT.



EDENBOWER POST OFFICE & STORE.

Almost Completed! Standard Information. See Winnie Gaddis THE PLUMBER

A HARD DRINKER

Expert in Employment of the Treasury Department.

THE TASTING OF TEA IS HIS SPECIALTY

Methods by Which Tea Drinkers of the United States are Assured of Practically Pure Products.

WASHINGTON, Dec. 31.—Secretary of the Treasury McAdoo has

in his employ a young man, who is a hard drinker. Moreover, the secretary knows that this young man imbibes freely, and strange as it may seem, pays him because he is a good drinker.

The young man in question is George F. Mitchell, of Washington. But before you form an opinion of this young man and his employer, you should know that he drinks nothing stronger than tea—and that his position is "supervising tea examiner" of the treasury department.

Up to date he has never been known to test less than four gallons of tea a day. He could tell in his sleep the difference between a cup of Ping Sany Green, Scented Oriental Pekoe, or Foochow Oolong. He can

recognize by second nature whether the brand which milady serves at 5 p. m. is going to fill her with cheer immortalized in literature, or with indigo blue, talc, gypsum or barium sulphate.

Mitchell has seven men in his charge located in New York, Boston, Chicago, St. Paul, Tacoma, San Francisco and Honolulu. Like Mitchell, these men must test several gallons of tea a day to determine whether or not the importations from the far off tea fields measure up to the official standards set by Mitchell's office.

Tea is the one article of food which is measured according to a set standard. Twelve grades are selected yearly. Then every chest of tea that enters the United States must conform to these standards—or farewell. The tea drinking determines the quality and fitness for consumption.

The test for coloring and chemical "facing" is the simple device of Dr. E. Alberta Reed, of the department of agriculture's bureau of chemistry. She discovered quite by accident one day while testing some teas that the sediment from her samples left a blue mark on paper. She rubbed the tea with a knife. It left a blue smudge. This was further tested, and found to indicate invariably the presence of indigo coloring.

Then she investigated further and found that a black paper would indicate the presence of such "facing" or adulterants as talc, gypsum, barium sulphate. Now the "Read test" is officially recognized by the supervising tea examiner as the best and simplest method of determining the presence of impurities. All that is really left for the examiner is to taste for quality.

Moreover, tea buyers abroad learned that they could test the product quite simply by the "Read test," and they began to sample the goods before they ordered them shipped to this country.

Consequently since the middle of this year, there has been practically no rejections of teas at American ports. They have all been pure and in entire conformity with the federal regulations.

Mitchell shows that at the close of the fiscal year, ending June 30, \$3,519,657 pounds of tea were imported, as against \$4,077,550 the previous year. Of this quantity 1,481,787 pounds were rejected either because it contained coloring or facing matter. But the simple but effective system of the woman chemist is changing that, and next year Mitchell expects his report to be almost free of rejections for adulterations.

Patronize the Farmers Public Market Tuesdays and Saturdays. Producers' and consumers' interest. Prices always reasonable.

C. A. Parolat
B. F. Shields
W. A. Bogard

Douglas County Investment Co.
REAL ESTATE
ROSEBURG, OREGON.
405 Cass Street.

Reliable Timber Estimates Published
Farm, Lands, Timber and City Property

Want to sell your Property? Why not list it with us?

DIARIES

and
Calendars
for

1914

at the
Roseburg
Book Store
Everything for the Office

... WHEN YOU BUY ...

Something at this store, we don't want you to feel that the sale is closed as soon as you have handed over your money.

IN OUR OPINION

No sale is finally closed until you have given your purchase a thorough trial and are perfectly satisfied with it. We regard your money simply as a deposit, which we will gladly return if you find you are not satisfied with the goods themselves. Our responsibility to you doesn't end as soon as you have left our door.

You'll Get a Square Deal

here in your Winter Outfit, same as we always give. We've looked over the best that the big markets offer in Clothing and Furnishings, and have made our usual painstaking selection. From ties and scarfs to suits and overcoats, you'll get values here that will open your eyes.

FOR INSTANCE, CONSIDER

our big line of Clothcraft and Sophomore All Wool Clothes. They are made scientifically and therefore sell for \$12.50 to \$20.00, one third less than you'd pay for other ready-made clothes of as good material and workmanship. And they are fully guaranteed by the makers and ourselves.

THINK OVER WHAT WE HAVE SAID

It means money to you. Come in and see us any time. Just received by Parcel Post a new and big assortment of Ties. Remember we are headquarters for the Famous "Boyer" Waterproof Hat, You'll find values all through our store. Shoes, Underwear, Hosiery, Sweaters, Shirts, Caps, Gloves, etc.

"Duds For Men"

BOYER HATS A. J. HOCHRADEL BARRY SHOES

SPECIAL SALE OF BRILLIANT CUT GLASS



Every piece deep cut by hand from choice crystal blanks by skilled workmen in America's greatest shop. At a little more than one half the price you usually have to pay. See these beautiful wares while the stock is complete.



Marsters Drug Company

YOU WANT TO SELL

We are getting up our spring list of properties, stock ranches, dairy farms, orchards, grain ranches, city properties, expecting a number of buyers in February, must be ready for them. If you want to sell your property, give us a chance to handle it

...COME IN TO-MORROW AND LIST IT WITH US...

COAST INVESTMENT COMPANY
PHONE 298 116 CASS ST.

WEST ROSEBURG GROCERY

We can save you money on your grocery bill. Our stock is FRESH and COMPLETE. Phone your need. Prompt delivery and satisfactory assured. All our goods guaranteed.

"We Give Roseburg Trading Checks"

DOWELL & FOSTER
PHONE 29.

Oregon Bakery:--

Look for the Label on Bread AT ALL GROCERS

That's All. Phone 241