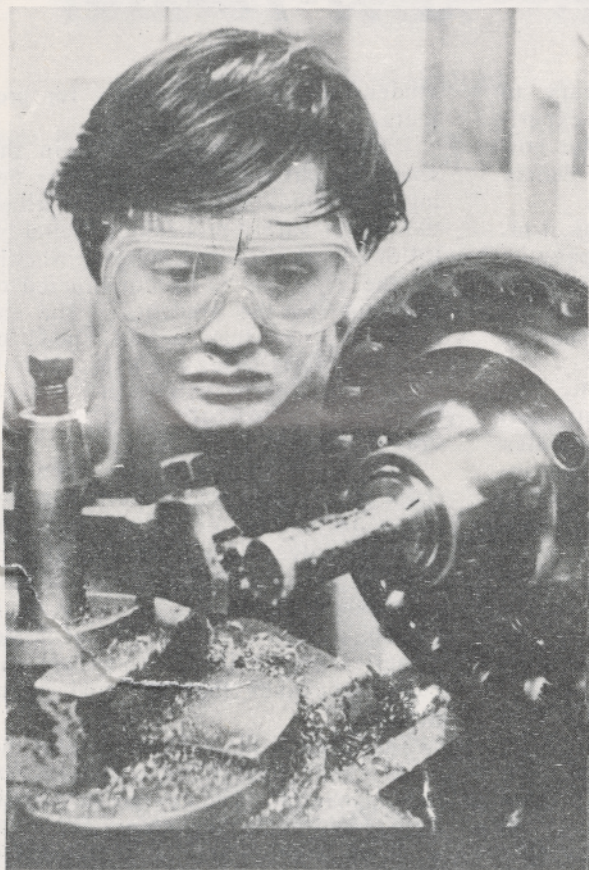


## Preparation And Assembly



*Edward LaClair is operating the engine lathe in the metal shop.*

"We are living in an age of metals; the products of the metals industries have become so common that they are often taken for granted. Not only does metal have a great impact on each of our lives, but it is equally in the life of our nation. Our country's material greatness is largely built on what is being done with metals."

The supply of skilled workmen, technicians, and engineers in the age that has made a moon walk seem commonplace can continue only through quality education preparing modern youth for the rapidly changing complex world.

Pictures Courtesy Of

John Ericksen

And

The Oregon Statesman



*George Tuckfield is using the electrical saw while Tom Sage is buffing a new steering wheel.*