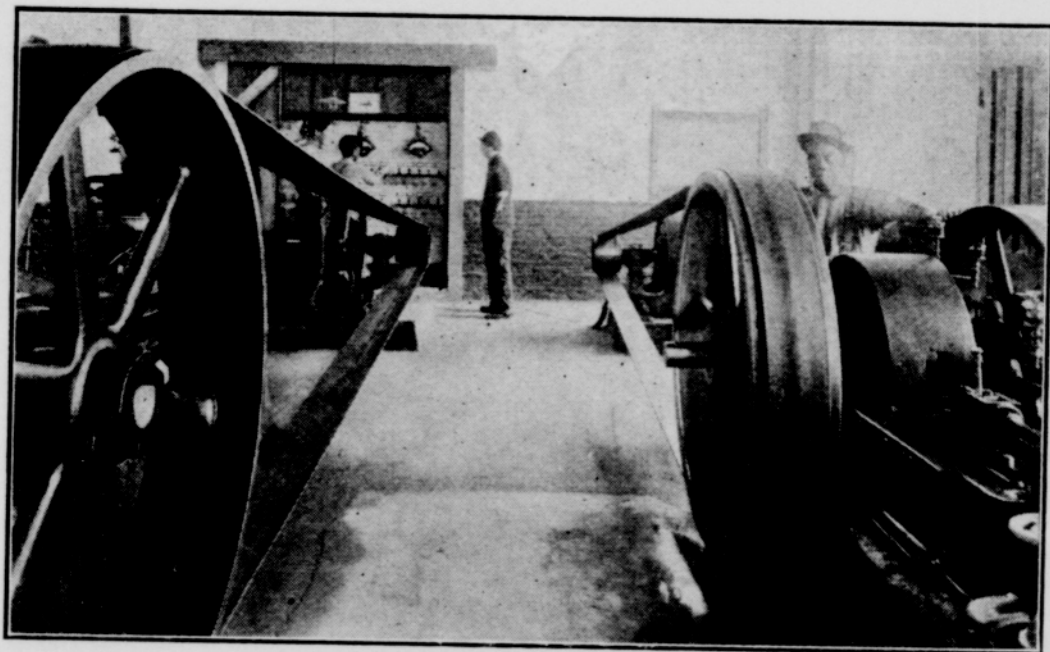


United States and beginning about 10:35 p. m. at Boston, 9:28 at Chicago and 8:19 at Denver. At San Francisco the moon will rise eclipsed.

July 29—two weeks after this lunar eclipse, please note—will occur a companion solar eclipse, but this will be visible only in the part of the world down Australia way. Dec. 24 there will be a partial eclipse of the sun, but if you want to see that too you will have to make a trip to the Antarctic ocean. Astronomers go to the ends of the earth in order to view an eclipse, but for us ordinary people the best plan is to wait for the eclipse to come to us.

---

---



CHEMAWA POWER PLANT