

*A place for everyone!*

**PERALANDRA**  
BOOKS & MUSIC FOR THE MIND & SPIRIT

OPEN MON.-SAT., 10-6  
790 EAST 11th (AT ALDER)  
485-4848

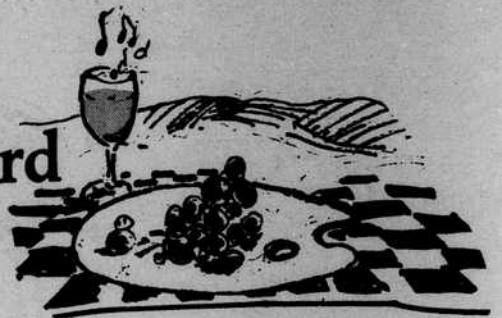
*Summer Memberships*

June 1 - August 31  
Daytime: 7:00-5:15 pm, every Friday \$25 (month)  
Evening: 7:00-11:00 pm, every Friday \$50 (month)

**ONSEN**  
HOURLY HOT TUB RENTALS

Take your reservations from 11:30 am weekdays until 12:45 am weekends. Call 485-4848. 1895 Alder Ave., Eugene

## Art in the Vineyard



Art in the Vineyard, a combination art auction and wine tasting charity event co-sponsored by Maude I. Kerns Art Center and Eugene Rotary Club, returns to the Forgeron Vineyards near Elmira at 1 pm on Sunday, July 14, Bastille Day.

While donated works of local artists form the heart of the art auction, an original James Whistler watercolor will be included in the auction items. Titled *Penthouse in a Public House 1886*, the Whistler work is unsigned but authenticated.

Art in the Vineyard also includes tastings of host Forgeron's

red and white wines. Picnic lunches will be available, topped with croissants in keeping with the Bastille Day festivities. The art auction begins promptly at 2:30 pm and is scheduled to conclude at approximately 4 pm.

Attendees may also view a multi-media slide presentation, *Seasons of a Vintage Year*, in the winery itself. Continuous live musical entertainment from a variety of groups will be featured before and after the auction.

Tickets are priced at \$6 each in advance of the event and will be \$7.50 at the gate on July 14. With each ticket, the attendee receives a collector's wine glass. There will be no charge for minors. Tickets are available at the Maude Kerns Art Center, 1910 E. 15th in Eugene, at any Of Grape and Grain locations, at Mark's Hallmark Shops in the Eugene Downtown Mall or Valley River Center, or from Eugene Rotary Club members.

## Oregon Country Fair



The Oregon Country Fair is back again—for the 15th year at its present site—with over 300 booths of crafts, food, displays and demonstrations. The Fair gathers craftspeople, artists, restaurateurs and entertainers from all over the Pacific Northwest for this annual celebration of the arts and the Oregon countryside.

Eight stage areas feature all-day entertainment including a variety of music and the best in "new age vaudeville." The Community Village and Energy Park offer exhibits and demonstrations by

community organizations and individuals.

Entertainment highlights include music by Scott Cossu, Jim Page, "The Wizard of Harmony" Ron Lloyd, Cam Newton, the Jackals, and numerous local favorites. Vaudeville acts include nationally recognized bubble magician Tom Noddy, plus a wealth of clowns, puppeteers, satirists, jugglers and storytellers.

The Fair is located off Highway 126, near Elmira, 13 miles west of Eugene. There is ample free parking, but visitors are encouraged to

take the convenient free bus service from the Eugene Downtown Mall or the River Road Transit Station. Buses leave at regular intervals and drop Fair goers right at the gate.

Admission is \$5 on Friday, and \$6 on Saturday and Sunday.

For a complete schedule of Fair entertainment, refer to the schedule on the Calendar page.

## Grand Opening Sale

**25% off metal framing**  
(custom & do-it-yourself)

**50% off selected ready-made frames**

Discounts also on some framed art.



Valley River Center • 343-6694  
next to See's Candies  
(sale good at W. 11th store also)

Now live from DeFrisco's Restaurant

**KQDQ's**  
1320 AM

*Breakfast Club*

with Radio Ray & his special guests

Join them in person for breakfast or coffee at 7 am ... or listen to AM 1320 weekdays 6-10 am to the most exciting live radio show on the air!

**KQDQ**  
1320 AM

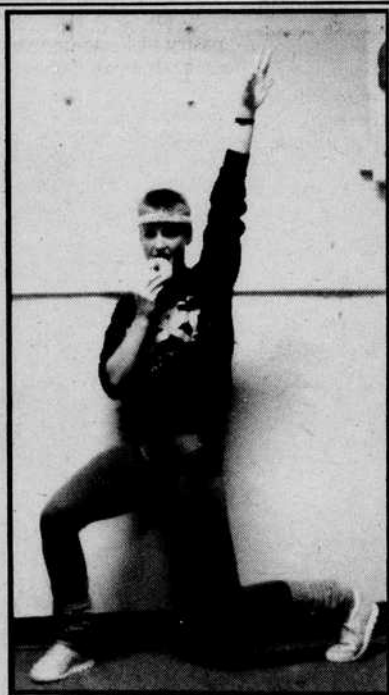
*deFrisco's*

*"Aerobics & Bagel Bakery bagels... part of my daily routine!"*

Kimberly Cavendish,  
Aerobics Instructor,  
Pacific Nautilus

*The Bagel Bakery*

795 W. 8th Ave.  
342-4390  
Mon-Fri 6:30-5:30  
Sat 8-5 Sun 8-1



Focus your personal inner strength on getting what you want out of life. . .

- lose weight
- stop smoking
- manage stress
- create new directions

Call or write for free brochure.

**You have the power, I have the tools!**

1257 High St. Suite 7, Eugene, OR 97401 484-1969

## Arts Foundation Grants

The Eugene Arts Foundation has recently announced its allocation of grants for 1985-86. A total of \$129,000 will be provided from the Silva Endowment income to the following local arts organizations: Community Center for Performing Arts, \$5,000; Eugene Ballet, \$17,000; Eugene Opera!, \$22,000; Lane Regional Arts Council, \$5,000; Maude Kerns Art Center, \$5,000; Oregon Bach Festival, \$25,000; Oregon Repertory Theatre, \$20,000; and The Eugene Symphony, \$30,000.

An additional grant of \$24,000 from the Hult Endowment Fund income was awarded to the City of Eugene for the Hult Center for the Performing Arts.

**CALENDAR DEADLINE THURS. 5 PM**

Send to: Calendar,  
PO Box 259, Eugene, OR 97440

*What's*  
**HAPPENING**

The Eugene area's guide to  
**ARTS & ENTERTAINMENT**

Published every Thursday

P.O. Box 259, Eugene, OR 97440

335 W. 20th, Eugene, OR 97405

(503) 484-0519