



*Serving the Sisters, Camp Sherman and Black Butte Ranch Areas*

# Ponderosa Properties

REALTORS AND PROPERTY MANAGEMENT



**A VERY SPECIAL SETTING!**

A paved lane winds up to an elevated ridge top where this exciting home sits with forested overviews & peek-a-boo views of Black Butte & Mt. Jefferson. Three bedrooms, 2.5 baths & 2,408 sq. ft. Great room, kitchen, living & breakfast nook plus formal dining room. Main-level master suite, jetted tub & walk-in shower. Two large bedrooms upstairs, spacious bathroom & loft overlooks great room with Mt. Jefferson view. Two double garages with lots of potential uses. The larger is attached to home by covered breezeway with finished upper-level multi-purpose room, lots of windows, plus full bathroom. Extensive paved parking leads to covered porch entry, paver stone patio & enjoyable lawn. The forested setting provides privacy. **\$849,900.** MLS#220106968



**NEW TOWNHOME!**

Three bedrooms, 2.5 baths. Ultra-modern interior design features upper-level living. Light and bright greatroom with south-facing windows, cozy propane fireplace and high vaulted ceilings. Sunny patio with mountain view and feeling of openness. Comfortable upper-level master suite with high ceilings, plenty of closet space and spacious bathroom. Also, a half-bath plus utility room upstairs for convenience. Lower level has 2 bedrooms plus guest bathroom. Heat pump on upper and efficient in-floor radiant heating on lower level. Single attached garage. **\$449,000.** MLS#202000015



**MOUNTAIN VIEWS!**

Mountain views from this 83-acre parcel. Tree groves or open skies...choose your estate-caliber homesite. US Forest Service public land borders one-half mile for added privacy. A water hook-up available if desired or drill your own. Horses, hermits or homebodies, a beautiful spot to create your custom dream. Eight miles to the Western town of Sisters. **\$980,000.** MLS#220103712



**1087 E. CREEKSIDE COURT**

Premier building lot in one of Sisters' finest neighborhoods. 12,320 square feet of level land with city utilities available. Nicely treed with native pines. Whychus Creek access. A quiet corner of Sisters, yet easy access to town. **\$235,000.** MLS#220102860



**GOLF COURSE FRONTAGE**

A beautiful setting overlooking Aspen Lakes' 16th Fairway with tee-to-green fairway views. The vista includes fairway ponds and a forested ridge/open space as the backdrop. Ponderosa pines and open skies highlight this large homesite ideal for your custom-home dreams. Underground utilities and water available, septic approval and close to Aspen Lakes Recreational Center. **\$299,500.** MLS#220106225



**40 ACRES - 17672 WILT ROAD**

Private, yet close in, less than 10± miles from downtown Sisters. Forty acres with elevated building site and modest mountain views. Mix of pine and juniper. This property would be a great candidate for off-grid power, but power access is available. Call listing agent regarding power. Has septic feasibility. Conditional-use permit to build a home. Borders government land, State of Oregon, BLM and Deschutes County on three sides. **\$325,000.** MLS#201908158



**RIVER FRONT PROPERTY**

In the City of Sisters with water, power & sewer to the property, storage shed, & approval for 2,500 sq. ft. home. Distance of building setback from river is difficult to obtain, making this a rare property. Large ponderosa & cottonwood trees plus 200± ft. of river frontage, accessible at multiple points. Peterson Ridge Trail system less than a block away. Miles of walking, jogging & mountain bike trails through the USFS just down the road with additional access to river on public land. So private, yet walking distance to Sisters. **\$479,900.** MLS #202002392



**7773 NW 89TH COURT**

Views of the Cascades and Black Butte from 9.07 acres of gently sloping land. This property is located within the highly desirable Lower Bridge Estates just outside of Terrebonne. Your dream home project has been given a head start here as the improvements to date include a private well, septic system installed in 2003 and power available. These significant improvement expenses have already been invested on behalf of this property's lucky new owners. Outdoor lovers will also appreciate the close proximity to public land access and the fishing opportunities to be realized on the scenic Deschutes River. **\$320,000.** MLS#220108557

*At Ponderosa Properties...  
...It's About the People*



**Kevin R. Dyer**  
541-480-7552  
CRS, GRI, Principal Broker



**Rad Dyer**  
541-480-8853  
ABR, CCIM, CRB, CRS, GRI, Principal Broker



**Carol Davis**  
541-410-1556  
ABR, GRI, Broker



**Catherine Black**  
541-480-1929  
CRS, Broker, Realtor Emeritus - 40+ years



**Debbie Dyer**  
541-480-1650  
GRI, Broker



**Shane Lundgren**  
541-588-9226  
Broker



**Greg Davidge**  
808-281-2676  
Broker



**Jackie Herring**  
541-480-3157  
Broker

**541-549-2002 1-800-650-6766**  
www.PonderosaProperties.com  
221 S. Ash St. | PO Box 1779 | Sisters  
*The Locals' Choice!*



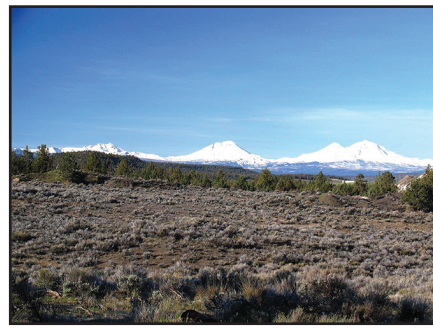
**LIKE-NEW TOWNHOME!**

Three bedrooms, 2.5 baths. Ultra-modern interior design features upper-level living. Light and bright greatroom with south-facing windows, cozy propane fireplace and high vaulted ceilings. Sunny patio with mountain view and feeling of openness. Comfortable upper-level master suite with high ceilings, plenty of closet space and spacious bathroom. Also, a half-bath plus utility room upstairs for convenience. Lower level has 2 bedrooms plus guest bathroom. Heat pump on upper and efficient in-floor radiant heating on lower level. Single attached garage. **\$449,000.** MLS#202000010



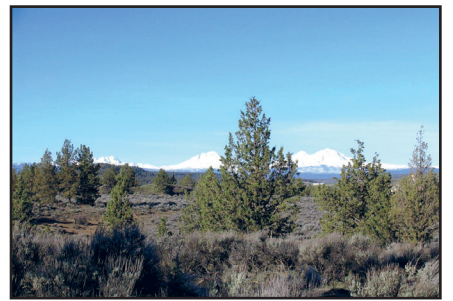
**LAKE CREEK LODGE, #18-U2**

Turnkey in every sense of the word! 1/4 interest in this 3-bedroom, 3-bath cabin at historic Lake Creek Lodge in Camp Sherman. Set on a small rise overlooking the creek basin, this vacation-ready cabin offers quality throughout. Knotty-pine paneling, plank fir floors, stone/gas fireplace, butcher-block countertops, stainless appliances, farm kitchen sink, tile bathroom & showers, cedar decks, stone exterior accents & locked owner storage. Enjoy the common area, tennis, pool, creek & open spaces. Nearby trails lead to the Metolius River and U.S. National Forest. **\$224,500.** MLS#220103280



**BEAUTIFUL MOUNTAIN VIEW**

Beautiful mountain view acreage located in the secluded Lower Bridge Basin near the Deschutes River. Views of all mountains from Mt. Jefferson to Broken Top. There is a very private elevated building site in the NE corner of the lot with huge mountain views and southern exposure. Lower Bridge Estates offers paved streets, electric power and phone. The lot is approved for a standard septic system. There is abundant BLM land in the area and the nearby Deschutes River corridor is great for hiking, fishing and wildlife viewing. **\$229,000.** MLS#201702313



**MOUNTAIN-VIEW ACREAGE!**

11.5 acres slope gently to the northwest with great mountain views and high-desert beauty. Paved access, electricity and approval for a septic system, this acreage is ready for your Central Oregon dream home. The property offers views of Mt. Hood, Mt. Jefferson, Three Fingers Jack, Black Butte, Mt. Washington, Black Crater and the Three Sisters, plus elevated views of the surrounding area. There are adjacent parcels for sale on either side that expand the possibilities. BLM lands are nearby and the fishing is great along this stretch of the Middle Deschutes. **\$239,500.** MLS#201910345