



Serving the Sisters, Camp Sherman and Black Butte Ranch Areas

Ponderosa Properties

REALTORS AND PROPERTY MANAGEMENT

New Listing



60734 BRISTOL WAY – BEND

Come visit this well-maintained single-level home on a private and spacious .46-acre lot. Character & charm are evident, inside & out. Surrounded by mature shade trees & shrubbery, providing exceptional privacy in this bird sanctuary. Updated ranch-style home with wonderful greatroom living area, enjoying bright, south-facing windows for natural light & wide-open living, dining & kitchen with eating/conversation island. Charming courtyard entry in the front. Large rear deck for outdoor enjoyment. Attached, fully insulated double garage with floored attic above. Great SE location just off Country Club Drive, with easy access to all parts of Bend & beyond. **\$450,000.** MLS#220109410



A VERY SPECIAL SETTING!

A paved lane winds up to an elevated ridge top where this exciting home sits with forested overviews & peek-a-boo views of Black Butte & Mt. Jefferson. Three bedrooms, 2.5 baths & 2,408 sq. ft. Great room, kitchen, living & breakfast nook plus formal dining room. Main-level master suite, jetted tub & walk-in shower. Two large bedrooms upstairs, spacious bathroom & loft overlooks great room with Mt. Jefferson view. Two double garages with lots of potential uses. The larger is attached to home by covered breezeway with finished upper-level multi-purpose room, lots of windows, plus full bathroom. Extensive paved parking leads to covered porch entry, paver stone patio & enjoyable lawn. The forested setting provides privacy. **\$849,900.** MLS#220106968



1156 E. CREEKSIDE COURT

Creek front living! Build your dream home with the music of the creek in your backyard. Pines, willows, cottonwoods and natural grasses for your landscape. Play in the water on a hot summer day! Lot adjoins riparian park. No HOA dues! City water and sewer, so close to everything that Sisters Country has to offer. **\$245,000.** MLS #220102859



LAKE CREEK LODGE #26-U4

One-quarter share interest in this beautiful 3-bedroom, 3-bath cabin at historic Lake Creek Lodge in Camp Sherman. Features modern amenities with the feel of yesteryear. Built in 2014 and furnished with a combination of antiques and quality reproduction pieces, the cabin features fir-plank floors, knotty-pine paneling, stone/gas fireplace, butcher-block countertops, gas cooktop, farm kitchen sink, tile bathroom floors & showers, washer/dryer, cedar decks, stone exterior accents & locked storage. **\$229,500.** MLS#220107403



16676 JORDAN ROAD

Mountain views! Part of the original Lazy Z Ranch. Fenced on two sides with Kentucky black fencing. Power close by. Septic feasibility in place, may need new evaluation. Close to town, yet off the beaten path, overlooking a 167± acre site of the R&B Ranch, which currently is not buildable. Needs well. Owner will consider short terms. **\$407,500.** MLS#201802331



SPRING HOME #14

Special setting at Black Butte Ranch with mountain feel and sense of privacy from its perch on the side of a forested ridge. Centrally located to all amenities at the Ranch. Greatroom kitchen overlooks family room. 2 spacious dining areas. 2 living areas, multiple fireplaces. 3 spacious bedroom suites, plus 2 bunk-room suites. Extensive outdoor living by large main-level deck overlooking the forest, covered lower-level patio, private morning courtyard & more. Timeless contemporary design apparent from cul-de-sac entrance, paved drive & parking, triple garage & formal covered entrance. **\$1,200,000.** MLS#220104124



SUN RANCH BUSINESS PARK

BE A PART OF IT...

Sisters' Only Custom Mixed-Use Community
 INNOVATIVE NEW CONCEPT

- Light Industrial/Commercial
- Live/Work Loft Apartments
- Opportunity for Economic Diversity
- Small Condo-type Spaces
- Perfect for Start-ups and Entrepreneurs

- Lot 17 MLS#201803204..... **\$210,000**
- Lot 5 MLS#201803205..... **\$240,000**
- Lot 4 MLS#201803206..... **\$250,000**
- Lot 7 MLS#201803202..... **\$260,000**

EAGLE CREST TOWNHOME!

Enjoy the active Central Oregon lifestyle together with vacation rental potential in this well-located 4-bedroom, 3.5-bath, 2,074 sq.ft. Ridge at Eagle Crest townhome. Open greatroom floor plan with two master bedroom suites and large outdoor deck overlooking an open space and bordering the Ridge Championship Golf Course. Resort amenities include golf, tennis, pickleball, sports courts, fitness centers, swimming pools, mountain and road biking and hiking, trails, horse stables, fishing and more. The resort is close to the Redmond Airport and offers easy access to Bend, Redmond, Sisters, Mt. Bachelor and Hoodoo ski areas. Home is fully furnished and ready for your vacation getaway. **\$379,500.** MLS#220108257

At Ponderosa Properties... ...It's About the People



Kevin R. Dyer
541-480-7552
CRS, GRI, Principal Broker



Rad Dyer
541-480-8853
ABR, CCIM, CRB, CRS, GRI,
Principal Broker



Carol Davis
541-410-1556
ABR, GRI, Broker



Catherine Black
541-480-1929
CRS, Broker,
Realtor Emeritus - 40+ years



Debbie Dyer
541-480-1650
GRI, Broker



Shane Lundgren
541-588-9226
Broker



Greg Davidge
808-281-2676
Broker



Jackie Herring
541-480-3157
Broker



Guy Lauziere
541-410-9241
Broker

541-549-2002 1-800-650-6766

www.PonderosaProperties.com

221 S. Ash St. | PO Box 1779 | Sisters

The Locals' Choice!



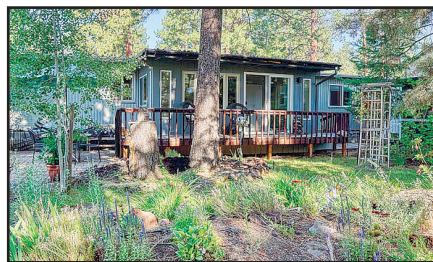
THE BEST OF BOTH WORLDS

Located in the Coyote Springs neighborhood, end of a quiet cul-de-sac bordering the forest buffer, this homesite offers the best of both worlds. Access over 100 miles of Peterson Ridge and other forest trails right out your back door. Enjoy the nearby amenities of FivePine Lodge, Three Creeks Brewing, Sisters Athletic Club, Shibui Spa and Sisters Movie House or stroll into downtown to enjoy Creekside Park, the Village Green, art galleries, fine restaurants and gourmet markets. Ready for your new home with underground utilities, paved streets, city sewer and city water. CCRs and design guidelines have helped create a beautiful neighborhood of quality homes. Low HOA fees. Get your hiking shoes on or pull out your mountain bike and enjoy all that Sisters Country has to offer! **\$260,000.** MLS#201910116



EXCITING NEW TOWNHOME

Located in The Peaks at Pine Meadow Village. Two bedrooms, 2 baths and 1,455 sq.ft. Contemporary style and design features upper-level living for privacy and view from the greatroom. Practical kitchen opens to a large spacious living/dining with vaulted ceilings and lots of windows to let the natural light in. Propane fireplace provides a cozy and warm living space in the cooler months. Ductless heat pump and lower-level radiant floor heating gives year-round efficiency. Master is on the entry level and enjoys a large closet and luxurious bathroom. Guest suite is located off the greatroom, as well as an enjoyable upper-level patio to enjoy the outdoors. An auto courtyard leads to the attached garage. **\$432,500.** MLS#202000020



GARDENER'S DELIGHT!

Oversized lot in prime location smack in the middle of town — convenient to all that Sisters offers. Spacious, older manufactured home with newer woodstove and furnace. Three bedrooms, two baths plus sunroom and mudroom access. Darling detached apartment/ADU includes kitchen. Plus additional structures for home business or additional quarters for family. Call for all the details and experience the magic of this gardener's delight with drip irrigation. Owner will carry. **\$359,950.** MLS#220109265



GOLF COURSE FRONTAGE

A beautiful setting overlooking Aspen Lakes' 16th Fairway with tee-to-green fairway views. The vista includes fairway ponds and a forested ridge/open space as the backdrop. Ponderosa pines and open skies highlight this large homesite ideal for your custom-home dreams. Underground utilities and water available, septic approval and close to Aspen Lakes Recreational Center. **\$299,500.** MLS#220106225