



Serving the Sisters, Camp Sherman and Black Butte Ranch Areas

Ponderosa Properties

The Locals' Choice!

REALTORS AND PROPERTY MANAGEMENT

New Listing



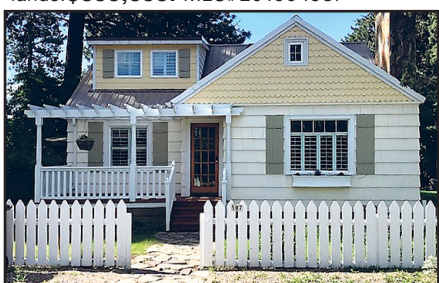
26226 SW PINE LODGE ROAD

Affordable, buildable land is quickly disappearing in Camp Sherman. This south-facing homesite is in a meadow setting with view of Black Butte & Green Ridge. Paved access, approved for septic system, has underground utilities & community water. Neighborhood & National Forest trails nearby & Lake Creek is across the street. Metolius Meadows has ample open space/common areas, community pool, tennis courts, RV parking/storage, Jefferson County maintained streets & much more. Year-round recreation opportunities out your front door or short drive to the Metolius River, Black Butte Ranch Golf, Hoodoo Ski Area, wilderness areas & a vast adjacent National Forest. **\$159,500.** MLS#201907868



GLAZE MEADOW #45

Wonderful cabin at Black Butte Ranch. Recently updated throughout the kitchen, living and bathrooms. It features a natural wood-paneled interior with tall vaulted open-beam ceilings and natural lava-rock fireplace. Two bedrooms down plus loft with bathroom. Enjoy the great location at the end of a long, peaceful cul-de-sac close to the Glaze Meadow Sports and Recreation Center. Adjacent to bike/pedestrian pathway with easy access to beautiful National Forest lands. **\$399,000.** MLS#201904587



CLOSE-TO-TOWN LIVING

Charming income producing cottage in the city of Sisters. Property has current short-term rental permit. Downtown location within walking distance to Whychus Creek. Relax in your master bedroom with fireplace and sitting area. Enjoy your evenings on the deck with gazebo and hot tub for your barbecue dinners and cozy evenings. **\$579,500.** MLS#201905543



IT'S A NATURAL!

This 39.5-acre parcel is ready for your dream to come true. Beautifully treed with mature pines, character junipers, bunchgrass and wildflowers. Public lands to the west and north keep you neighbor-free for miles in those two directions. Power nearby. Easy access at the top of a small public road cul-de-sac. **\$299,000.** MLS#201905467



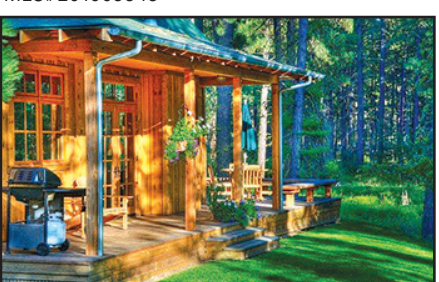
343 W. ADAMS AVE.

Development opportunity for new construction. 120' x 114'. Good location in NW portion of Sisters. Located in area with mix of professional, service, and medical. **\$289,000.** MLS#201903440



CLASSIC HIGH MEADOW HOME

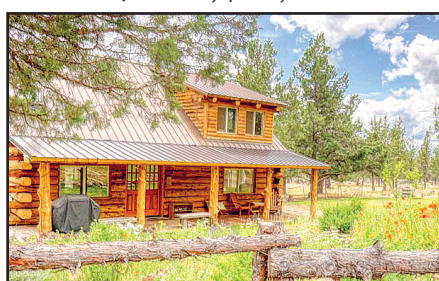
Mountain views from this single-level, 4-bedroom, 3-bath home on 1 acre in Sisters premier neighborhood. Hardwood floors, a wall of windows and a wood-burning fireplace grace the greatroom. New GE Profile appliances & lighting upgrade the kitchen. Newly tiled walk-in master shower. Fresh paint and new carpeting throughout. Home office, family room and large pantry included in the 2,840 sq. ft. Oversized double garage with abundant storage. The 4th bedroom and 3rd bath can be "locked off" for that man-cave or she-shed. **\$674,900.** MLS#201902939



LAKE CREEK LODGE, #18

Turnkey in every sense of the word! Full interest 3 bed/3 bath cabin at Historic Lake Creek Lodge in Camp Sherman. Set on a small rise overlooking the creek basin, this vacation ready cabin offers quality throughout. Knotty pine paneling, plank fir floors, stone/gas fireplace, butcher block countertops, stainless appliances, farm kitchen sink, tile bathroom & showers, cedar decks, stone exterior accents & locked owner storage. Enjoy the common area tennis, pool, creek & open spaces. The adjacent Lodge serves great meals! **\$849,500** MLS#201805357

Options: 1/4 share \$219,000 or 1/2 share, \$429,000



18557 MCSWAIN DRIVE

Nearby access to public land, BLM and trails. McKenzie Canyon open terrain views. Filtered views of the Three Sisters. Spacious and open. Completely fenced 5 acres, great for horses. Approximately 1,000 sq. ft. shop with wood burning stove, carport with office. Indoor pool. Covered porch, large deck. Wood burning stove on tile hearth. Handcrafted log home, large logs. Well insulated. Great wildlife viewing. Open floor plan. **\$575,000.** MLS#201906779

At Ponderosa Properties... ...It's About the People



Kevin R. Dyer
541-480-7552
CRS, GRI, Principal Broker



Rad Dyer
541-480-8853
ABR, CCIM, CRB, CRS, GRI,
Principal Broker



Carol Davis
541-410-1556
ABR, GRI, Broker



Catherine Black
541-588-9219
CRS, Broker,
Realtor Emeritus - 40+ years



Debbie Dyer
541-480-1650
GRI, Broker



Shane Lundgren
541-588-9226
Broker



Greg Davidge
808-281-2676
Broker



Jackie Herring
541-480-3157
Broker

541-549-2002 1-800-650-6766

www.PonderosaProperties.com

221 S. Ash St. | PO Box 1779 | Sisters



687 W. JEFFERSON AVENUE

Townhome in Pine Meadow Village with carefree living. Quality construction wraps around you in this 3-bedroom, 2.5-bath home. A propane fireplace adds ambiance to the living room. Breakfast bar, pantry and appliances included in the bright kitchen. Spacious master with a walk-in closet, private bath and Juliet balcony that provides a mountain view. Double garage, covered front porch and back patio. A heat pump provides A/C. Pool, hot tub and Recreation Center for homeowners. **\$354,000.** MLS#201904027



ROCK RIDGE #37

Vacation location at Black Butte Ranch! One-half ownership for all of the fun at half the expense! 3 bedrooms plus a bunk room in this 1,540 sq. ft. Rock Ridge home. So many upgrades, including granite countertops in the kitchen, new decks, efficient propane stove and more. Easy access to several pools, tennis courts, bike paths and the Glaze Meadow Sports Center. **\$239,500.** MLS#201905281

69114 BARCLAY LANE

Beautiful 10 acres with Cascade mountain views! Close to town with paved access, natural sub-irrigated meadow, ponderosa pines, septic approval, excavated pond and shallow well depths. The building site offers views of Broken Top, the Three Sisters and Black Crater. There are views from the property of Mt. Jefferson, Black Butte, 3-Fingered Jack and Mt. Washington. An early morning walk through the meadow is spectacular with chest-high meadow grasses, wildflowers, grazing deer, circling raptors and countless native birds. This rare setting has Indian Ford Creek along its east boundary. **\$449,500.** MLS#201906185

BEAUTIFUL MOUNTAIN VIEW

Beautiful mountain view acreage located in the secluded Lower Bridge Basin near the Deschutes River. Views of all mountains from Mt. Jefferson to Brokentop. There is a very private elevated building site in the NE corner of the lot with huge mountain views and southern exposure. Lower Bridge Estates offers paved streets, electric power and phone. The lot is approved for a standard septic system. There is abundant BLM land in the area and the nearby Deschutes River corridor is great for hiking, fishing and wildlife viewing. **\$229,000** MLS#201702313



METOLIUS MEADOWS

Breathtaking setting overlooking Lake Creek! Here is your chance to live in this enchanting location enjoying the sight/sound of water! One owner, custom built and single level. Separated master with office, TV room with Murphy bed, gorgeous cabinetry, beams and solid Alder doors, bay breakfast nook and island. Expansive outdoor spaces too! Come be held captive by the quiet and beauty. **\$549,000.** MLS#201904935

YOU BELONG HERE

2.5-acre parcels with community water, power and phone available. All lots offer you treed privacy and easy paved-road access. Be one of the first buyers in to claim a mountain view. Just minutes to Sisters. Priced **\$196,000 to \$247,500.** Call listing office for MLS#.

The Locals' Choice!