

Serving the Sisters, Camp Sherman and Black Butte Ranch Areas



Ponderosa Properties LLC

The Locals' Choice!

REALTORS AND PROPERTY MANAGEMENT

541-549-2002

1-800-650-6766

www.PonderosaProperties.com

221 S. Ash St. | PO Box 1779, Sisters

New Listing



63441 STACY LANE

Well-maintained home in quiet neighborhood, near schools. Gas fireplace in living room. Updated kitchen with granite countertops, tile backsplash, new appliances and under-cabinet LED lighting. New air conditioner. New paint, inside and out. Bonus space above garage, could be 4th bedroom. RV parking. **\$424,000.** MLS#201705033



YOU BELONG HERE

2.5-acre parcels with community water, power and phone available. All lots offer you tree privacy and easy paved-road access. Be one of the first buyers in to claim a mountain view. Just minutes to Sisters. Priced **\$150,000 to \$225,000.** Call listing office for MLS#.



12234 SW TRACT I

Rustic forest cabin along the banks of the wild and scenic Metolius River located just downstream of the village of Camp Sherman. Open greatroom with wood vaulted ceilings, knotty pine paneling, river-rock hearth and woodstove. 1 bedroom down with an upstairs sleeping loft. Beautiful setting and river views. Hike, fish, bike, cross-country ski out your door. Year-round recreational opportunities. U.S. Forest Service special-use permit cabin. **\$345,000.** MLS#201609632



RARE HOODOO SKI CABIN

Hoodoo Cabin #5 is a rustic A-frame on .51 ac. nestled among trees w/easy access to Hoodoo Ski Area. Ski/snowshoe/hike out your back door. Close proximity to Big Lake, Pacific Crest Trail and miles of ATV trails. Spend the day playing in the snow then warm yourself by the fire in your cozy hideaway cabin, equipped w/full kitchen, sauna & furniture. Large supply of wood, well-maintained outhouse included. Showers available at Hoodoo. **\$129,000** MLS#201610976



FOREST LAND

156-acre forest parcel located 10 miles NE of Sisters. Borders Deschutes National Forest. Property is well stocked with mature ponderosa pine through the valley and up the slopes of Stevens Canyon. The mix of juniper/pine forest on the upper plateau provides beautiful character and views over the adjacent forest land. Wildlife abounds throughout this remote, yet easily accessible property. Parcel is three separate tax lots, all deemed unbuildable by Deschutes County. **\$199,000.** MLS#201602371



17786 WILT ROAD

6+ acres with pine and juniper trees. Property is a legal lot of record. Needs well and septic system. Power not currently available. Remote and private. Approximately 9 miles from Sisters. Owner will consider terms. **\$65,000.** MLS#201606229



NEAR THE DESCHUTES RIVER

Climb the slight ridge and the mountain views open big and wide from Mt. Hood to Broken Top. Every peak is visible as well as the valley below. Bordering BLM directly on the eastside. Paved access, underground utilities, existing well and septic available. Enjoy the quiet setting and night sky in this beautiful secluded corner of Deschutes County. **\$395,000.** MLS#201506281



BEAUTIFUL LOT IN CAMP SHERMAN...

...with a huge view of Black Butte, overlooking open space/meadow with southern exposure. Underground electric, telephone and water available, with paved street. Ownership includes common-area creek basin, seasonal swimming pool, tennis courts, trails and much more. Close to National Forest, the Metolius River, Hoodoo Ski Bowl and Black Butte Ranch golf. Year-round recreation available out your door. **\$129,500.** MLS#201507794



17725 MOUNTAIN VIEW DRIVE

See Whychus Creek, the canyon and dramatic rimrock from this 2.55-acre property. The homesite is nicely treed with junipers and pines. In a neighborhood of nice homes with paved access and a community water system. Your home and shop would be allowed. **\$159,500.** MLS#201605019



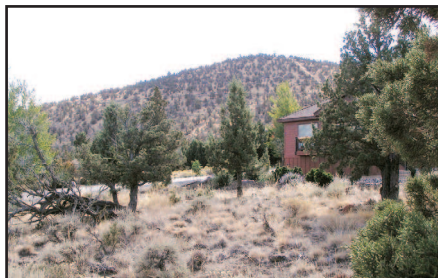
WEST HILLS OF BEND

A rare opportunity to build your next home, or that spec house that you have been planning in your head. Over 9,300 sq. ft., fairly level for an easy build including a few large trees. In an established neighborhood that is convenient to all that Bend living has to offer. **\$229,000.** MLS#201605612



5811 NW 66TH

Land of plenty for your new home. Over 4 acres in the Tetherow Crossing neighborhood to build that new home. Sandy, grassy areas mix in-between interesting rock formations. The Seller's custom-drawn, engineered home plans may be included in this purchase. House was to be located on the outcropping for the best mountain view! Horses and shops allowed. Add in privacy, and a paved road...a dream waiting for you. **\$157,000.** MLS#201602461



168 HIGHLAND MEADOW LOOP

Enjoy resort living — EVERY DAY is like a holiday. Amenities to be enjoyed include championship golf courses; putting; miles of hike/bike trails; in/outdoor tennis & pickle ball; fitness facilities; spa/salon; and best of all wonderful neighbors. **\$149,900.** MLS#201611066



2556 NW SACAGAWEA

Wonderful setting in NW Crossing. This 1-level Craftsman bungalow home is on a quiet street facing the rear forested area of High Lakes Elementary. Enjoy the space from the front porch. Let the sun in to a naturally lit living room with new carpeting and gas fireplace. New carpet in the spacious master suite. Two guest rooms with wood floors. Open kitchen/dining room with coffered ceiling. New stainless steel appliances and large pantry. Fenced rear yard located off patio. Attached double garage. **\$519,000.** MLS#201703153



FILTERED MOUNTAIN VIEWS

7+ acres, septic approved, property corners located, power close-by. Needs well, close-in yet great access to Sisters, Bend and Redmond, in the Sisters School District. Level-to-rolling terrain with mountain views. Owner will consider terms. **\$229,500.** MLS#201607438



13422 RED CLOVER

Spectacular meadow-front setting with huge views. This lodge-style home offers the character of a true mountain retreat surrounded by mature aspen, fir and ponderosa pines. The open great-room has a massive rock fireplace and high vaulted ceilings. There are 3 separate bedroom suites and the 4th bedroom is a large bunkroom. There are extensive outside deck areas to enjoy the beautiful setting. Located in a quiet part of the Ranch near Paulina Pool Rec area. This is a 1/4 share. **\$232,500.** MLS#201702305

Kevin R. Dyer
541-480-7552
CRS, GRI,
Principal Broker

Rad Dyer
541-480-8853
ABR, CCIM, CRB,
CRS, GRI,
Principal Broker

Carol Davis
541-410-1556
ABR, GRI, Broker

Catherine Black
541-588-9219
CRS, Broker,
Realtor Emeritus
40 years

Shane Lundgren
541-588-9226
Broker

Debbie Dyer
541-480-1650
GRI, Broker

Carrie Koepke
541-419-1575
Broker

Greg Davidge
808-281-2676
Broker

Jackie Herring
541-480-3157
Broker