

Serving the Sisters, Camp Sherman and Black Butte Ranch Areas



Ponderosa Properties LLC

The Locals' Choice!

REALTORS AND PROPERTY MANAGEMENT

541-549-2002

1-800-650-6766

www.PonderosaProperties.com

221 S. Ash St. | PO Box 1779, Sisters



GREAT BUILDING OPPORTUNITY

A prime homesite located in Aspen Lakes Golf Estates. Wonderful southern exposure to provide natural light for your future home. Prominent building area set back from the street and overlooking green fairways and the mountains. Gated community with private clubhouse, pool, spa, tennis and more. World-class golf course and wonderful restaurant open to the public. Quiet streets with room to stroll. Purchase includes 2 years golf membership for two. Lot is designed to connect to operating DEQ-approved sewer. **\$299,000.** MLS#201608941



70635 PINE DROP

Special and exciting home with many windows overlooking a 1.49-acre lot. Easy access to National Forest, GM Sports Center & GM Golf. Spacious rooms & vaulted ceilings enhance clear cedar paneling & extensive use of wood. Well-designed kitchen w/casual & formal dining overlooking a large living room w/natural lava stone fireplace. Main-level master suite has jetted tub, sauna & adjacent den/office. 2 bedrooms up, 1 w/fireplace. Multipurpose room in attached garage. Expansive decks. **\$825,000.** MLS#201700078



70019 MEADOW VIEW ROAD

Look no further – live here all the days of your life! You'll truly appreciate the real estate adage "location, location, location" when you feast your eyes on this private full acre set on lush green High Meadow with snow-capped vistas of the Cascade Mountain Range and Indian Ford Creek. Wildlife abounds. Deschutes Trust and USFS lands nearby. Wall of windows plus deck to the view and for those sizzling sunsets and starry nights of Sisters. Enjoy original-owner vaulted T&G beam ceiling cabin now and later bring your contractor to bid master suite addition, etc. This is truly a rare find! **\$469,000.**



13375 SW FOREST SERVICE RD.

One-quarter interest in this beautiful 3-BR, 3-BA cabin at historic Lake Creek Lodge in Camp Sherman. Features modern amenities with the feel of yesteryear. Built in 2014 and furnished with a combination of antiques and quality reproduction pieces, the cabin features fir plank floors, knotty pine paneling, stone/gas fireplace, butcher-block countertops, gas cooktop, farm kitchen sink, tile bathroom floors & showers, washer/dryer, cedar decks, stone exterior accents & locked storage. **\$230,000.** MLS#201605802/201605869



VACATION SPOT...

...or downsizing, this is the ideal home for you! The greatroom includes a pellet stove to keep you extra cozy on a chilly night. Find all of the cabinets you need in this kitchen! Washer/dryer included in the laundry room. Spacious master bedroom with a walk-in closet and separate loft for additional sleeping space or home office. Oversized double car garage, carport and storage building round out this 4± acre property in the pine trees just minutes to Sisters. **\$399,000.** MLS#201609219



GLAZE MEADOW 251

Enjoy private resort living in this spectacular home! The greatroom features an open kitchen, generous dining area and a spacious living room featuring a river rock fireplace. The master suite is on the main floor and features a fireplace. Guest bedroom and bath is also on the main floor with two bedrooms up and a bonus room/office (could be used for extra sleeping arrangements). This home has a beautiful new deck with built-in spa. **\$845,000.** MLS#201608255



FILTERED MOUNTAIN VIEWS

7+ acres, septic approved, property corners located, power close-by. Needs well, close-in yet great access to Sisters, Bend and Redmond, in the Sisters School District. Level-to-rolling terrain with mountain views. Owner will consider terms. **\$249,500.** MLS#201607438



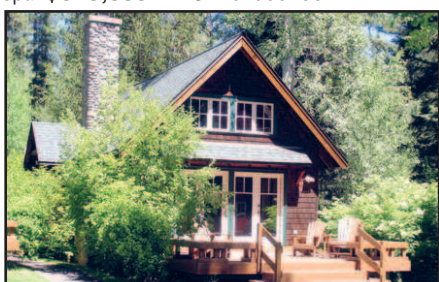
RARE HOODOO SKI CABIN

This is your chance to own a rare recreational dream property & piece of Central Oregon History! Hoodoo Cabin #5 is a rustic A-frame on .51 ac. nestled among trees w/easy access to Hoodoo Ski Area. Ski/snowshoe/hike out your back door. Close proximity to Big Lake, Pacific Crest Trail and miles of ATV trails. Spend the day playing in the snow then warm yourself by the fire in your cozy hideaway cabin, equipped w/full kitchen, sauna & furniture. Large supply of wood, well-maintained outhouse included. Showers available at Hoodoo. **\$129,000** MLS#201610976



WEST HILLS OF BEND

A rare opportunity to build your next home, or that spec house that you have been planning in your head. Over 9,300 sq. ft., fairly level for an easy build including a few large trees. In an established neighborhood that is convenient to all that Bend living has to offer. **\$239,000.** MLS#201605612



25553 SW SUTTLE SHERMAN

Beautiful 2-bedroom, 1-bath, 972± sq. ft. Metolius riverfront cabin with wood-burning riverrock fireplace, knotty pine paneling and open greatroom. Enjoy south-facing upriver views. Hike, bike, x-country ski, fish and more right out the front door. Year-round vacation rental potential. Rental history available. View more info at <http://www.metoliusriverresort.com>. **\$349,000** MLS#201605778



BEAUTIFUL REMOTE ACREAGE

Secluded, rolling ponderosa forest tree farm north of Sisters. This 157± acre parcel borders U.S. National Forest land. Property is off the grid with easy access most of the year. Enjoy open skies and abundant wildlife. Metolius Winter Deer Range. **\$399,000.** MLS#201507130



279 N. WHEELER LOOP

What a wonderful place for your retirement home! 55+ gated secure community close to shopping, churches and all of Sisters year-round activities. HOA fee includes some landscaping and sprinkler maintenance. This is hard-to-find affordability in Central Oregon OR let alone in Sisters! Clubhouse and fitness area for you, too. Start planning for your future NOW. It's an opportunity you will not want to pass up. **\$55,000.** MLS#201609969



HIGH DESERT LIVING AT ITS FINEST

This 1/2-acre homesite is a chance to build in one of Central Oregon's finest communities. With a focus on wellness and "walking softly on the earth," Brasada Ranch offers a tip-top athletic club, Jacobsen/Hardy golf course and extensive equestrian center. Just 15 minutes to Bend. **\$89,000.** MLS#201408571



BEAUTIFUL TREED LOT IN METOLIUS MEADOWS

This .40± acre lot with mature ponderosa pines borders open space/common area overlooking Lake Creek to the north and Black Butte to the south. Paved road and underground utilities. Ownership includes common-area privileges, tennis courts, pool and more. Close to National Forest and Metolius River. This is a great lot to build your vacation getaway cabin. **\$209,500.** MLS#201108987

RIVER-FRONT AND MOUNTAIN VIEWS!

One of the few remaining buildable lots along the Deschutes River with 75' of water frontage, National Forest across the river. Established neighborhood on a quiet, dead-end street. Lots of wildlife, including deer, eagles and osprey. Elk have been known to winter in the area. Minutes to Old Mill District and downtown Bend. BMRPD is working on plans for a future footbridge for river trail access. Fabulous location for a vacation home or permanent residence **\$299,000.** MLS#201605172

17786 WILT ROAD
6+ acres with pine and juniper trees. Currently not a legal buildable lot. Needs well and septic system. Power not currently available. Remote and private. Approximately 9 miles from Sisters. Owner will consider terms. **\$65,000.** MLS#201606229

FOUR PRIME LOTS IN PINE MEADOW VILLAGE

Prime Pine Meadow Village lots in a cluster. Three of the 7 have been built and plans are available for the remaining lots. Lots can be purchased as a group or individually. Close to town and THE BEST DEAL IN PINE MEADOW VILLAGE! **\$110,000/each.** MLS#: 201602888, 201602889, 201602891, 201602894

Kevin R. Dyer
541-480-7552
CRS, GRI,
Principal Broker

Rad Dyer
541-480-8853
ABR, CCIM, CRB,
CRS, GRI,
Principal Broker

Carol Davis
541-410-1556
ABR, GRI, Broker

Catherine Black
541-588-9219
CRS, Broker,
Realtor Emeritus
40 years

Shane Lundgren
541-588-9226
Broker

Debbie Dyer
541-480-1650
GRI, Broker

Carrie Koepke
541-419-157
Broker

Greg Davidge
808-281-2676
Broker

Jackie Herring
541-480-3157
Broker

