

Serving the Sisters, Camp Sherman and Black Butte Ranch Areas



Ponderosa Properties LLC

The Locals' Choice!

REALTORS AND PROPERTY MANAGEMENT

541-549-2002

1-800-650-6766

www.PonderosaProperties.com

221 S. Ash St., Sisters

New Listings



69566 HALTER

Pride of ownership evident! Immaculate single-level backs to common/USFS land! Vaulted greatroom warmed by Jotul. Wall of windows brings in Central OR sunshine plus bay-window dining. Landscaped and decks stained. RV parking behind gate, fenced. 2011 roof. Huge laundry room with basin. Jenn-Aire range, breakfast bar. There's also solarium adjacent master (office/nursery?) Don't hesitate! **\$364,000.** MLS#201611136



RARE, ELEVATED RIMROCK SETTING...

...with spectacular mountain views. See all Cascade peaks from Mt. Hood to Broken Top. Borders BLM on 3 sides. Very private and quiet location. The property is off the grid. Only 1 close neighbor. County-maintained gravel access road and shared gravel driveway. Enjoy the adjacent BLM lands for horseback riding and hiking. Wildlife abound. Easy access to Redmond, Bend and Sisters. **\$219,500.** MLS#201611209



956 E CREEKSIDE

Enjoyable single-level home in a wonderful neighborhood on Whychus Creek. Courtyard garden entry leads to covered porch. Spacious greatroom layout filled with natural light, propane fireplace, kitchen island & large dining area. Very modern floorplan ideal for 2 master suites plus den or traditional 3-bedroom use. Shaded rear deck overlooks creek basin, and open space with creek views. Large .41-acre lot plus park and State lands on two sides provide surprising privacy for in-town location. **\$498,000.** MLS#201605637

BEAUTIFUL LOT IN CAMP SHERMAN...

...with a huge view of Black Butte, overlooking open space/meadow with southern exposure. Underground electric, telephone and water available, with paved street. Ownership includes common-area creek basin, seasonal swimming pool, tennis courts, trails and much more. Close to National Forest, the Metolius River, Hoodoo Ski Bowl and Black Butte Ranch golf. Year-round recreation available out your door. **\$129,500.** MLS#201507794



GLAZE MEADOW 251

Enjoy private resort living in this spectacular home! The greatroom features an open kitchen, generous dining area and a spacious living room featuring a river rock fireplace. The master suite is on the main floor and features a fireplace. Guest bedroom and bath is also on the main floor with two bedrooms up and a bonus room/office (could be used for extra sleeping arrangements). This home has a beautiful new deck with built-in spa. A must see property! **\$845,000.** MLS#201608255



THE CHANCE OF A LIFETIME.

This parcel is 20 acres, in a zone that allows you to partition into 2-10 acre homesites! Easy access, in the Sisters School District and a trot to public lands. The Three Sisters Mountain view opens up as you crest the slight rise. What a beautiful, private spot for a new home! Your house, shop, and barn are all allowed. Live on all 20 acres or partition and sell off 10 acres, or invest in this land and sell both properties. Bring your boots, let's walk the property corners! **\$397,000.** MLS#201607602



BEAUTIFUL TREED LOT IN METOLIUS MEADOWS

This .40± acre lot with mature ponderosa pines borders open space/common area overlooking Lake Creek to the north and Black Butte to the south. Paved road and underground utilities. Ownership includes common-area privileges, tennis courts, pool and more. Close to National Forest and Metolius River. This is a great lot to build your vacation getaway cabin. **\$209,500.** MLS#201108987

39 HOMESITES FOR SALE

Approved 39 buildable lots covering 100 acres. Just minutes to Sisters. Each square lot is about 2.5 acres with nice tree coverage. Some have mountain views, some border USFS. Gravel roads and the community water main lines are in. Call the listing office for the bids to provide water, power and pavement to each parcel. A rare opportunity to finish these 5 streets out and either build the homes, or sell the lots individually. Make your own destiny! **\$1,800,000.** MLS#201600855



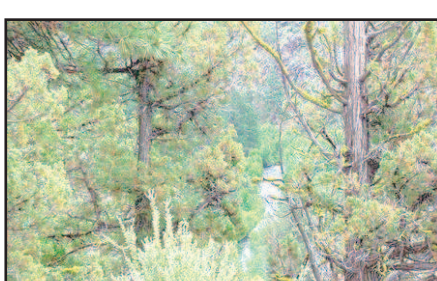
70019 MEADOW VIEW ROAD

Look no further – live here all the days of your life! You'll truly appreciate the real estate adage "location, location, location" when you feast your eyes on this private full acre set on lush green High Meadow with snow-capped vistas of the Cascade Mountain Range and Indian Ford Creek. Wildlife abounds. Deschutes Trust and USFS lands nearby. Wall of windows plus deck to the view and for those sizzling sunsets and starry nights of Sisters. Enjoy original-owner vaulted T&G beam ceiling cabin now and later bring your contractor to bid master suite addition, etc. This is truly a rare find! **\$469,000.**



17774 WILT SISTERS

Remote with mix of pine and junipers. Level with gentle slope to the east. In an area of non-buildable parcels, but this one could possibly become a buildable lot. No power or water, needs septic system. Off-grid property. Owner will consider terms. **\$80,000.** MLS# 201208384



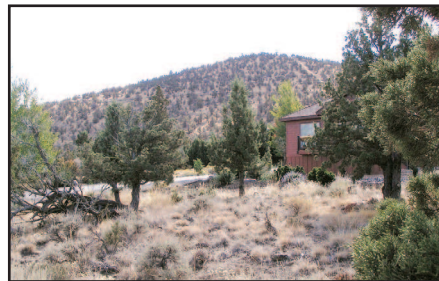
17725 MOUNTAIN VIEW DRIVE

See Whychus Creek, the canyon and dramatic rimrock from this 2.55-acre property. The homesite is nicely treed with junipers and pines. In a neighborhood of nice homes with paved access and a community water system. Your home and shop would be allowed. **\$169,500.** MLS#201605019



FOUR PRIME LOTS IN PINE MEADOW VILLAGE

Prime Pine Meadow Village lots in a cluster. Three of the 7 have been built and plans are available for the remaining lots. Lots can be purchased as a group or individually. Close to town and THE BEST DEAL IN PINE MEADOW VILLAGE! **\$110,000/each.** MLS#s: 201602888, 201602889, 201602891, 201602894



168 HIGHLAND MEADOW LOOP

Enjoy resort living — EVERY DAY is like a holiday. Amenities to be enjoyed include championship golf courses; putting; miles of hike/bike trails; in/outdoor tennis & pickle ball; fitness facilities; spa/salon; and best of all wonderful neighbors. Buy your land at today's cost then begin planning your dream home here in Ridge! **\$149,900.** MLS#201611066



FOREST LAND

156-acre forest parcel located 10 miles NE of Sisters. Borders Deschutes National Forest. Property is well stocked with mature ponderosa pine through the valley and up the slopes of Stevens Canyon. The mix of juniper/pine forest on the upper plateau provides beautiful character and views over the adjacent forest land. Wildlife abounds throughout this remote, yet easily accessible property. Parcel is three separate tax lots, all deemed unbuildable by Deschutes County. **\$199,000.** MLS#201602371



68995 BARCLAY CT.

15+ acres close to town. Horse property, with natural meadow that sub-irrigates part of the year. Seasonal creek the full length of the back of the property. Paved road access. Rare to find acreage close-in to Sisters. **\$195,000.** MLS#201610083



5811 NW 66TH

Land of plenty for your new home. Over 4 acres in the Tetherow Crossing neighborhood to build that new home. Sandy, grassy areas mix in-between interesting rock formations. The Seller's custom-drawn, engineered home plans may be included in this purchase. House was to be located on the outcropping for the best mountain view! Horses and shops allowed. Add in privacy, and a paved road...a dream waiting for you. **\$157,000.** MLS#201602461

The Locals' Choice!

Kevin R. Dyer
541-480-7552
CRS, GRI.
Principal Broker

Rad Dyer
541-480-8853
ABR, CCIM, CRB,
CRS, GRI.
Principal Broker

Carol Davis
541-410-1556
ABR, GRI, Broker

Catherine Black
541-588-9219
CRS, Broker,
Realtor Emeritus
40 years

Shane Lundgren
541-588-9226
Broker

Debbie Dyer
541-480-1650
GRI, Broker

Carrie Koepke
541-419-1575
Broker

Desmond Boots
541-977-1125
Broker

Greg Davidge
808-281-2676
Broker

Jackie Herring
541-480-3157
Broker