

Serving the Sisters, Camp Sherman and Black Butte Ranch Areas



Ponderosa Properties LLC

The Locals' Choice!

REALTORS AND PROPERTY MANAGEMENT

New Listing



GREAT BUILDING OPPORTUNITY

A prime homesite located in Aspen Lakes Golf Estates. Wonderful southern exposure to provide natural light for your future home. Prominent building area set back from the street and overlooking green fairways and the mountains. Gated community with private clubhouse, pool, spa, tennis and more. World-class golf course and wonderful restaurant open to the public. Quiet streets with room to stroll. Purchase includes 2 years golf membership for two. Lot is designed to connect to operating DEQ-approved sewer. **\$299,000.** MLS#201608941



GLAZE MEADOW #325

Beautiful custom-built home, overlooking the 16th fairway of the Glaze Meadow Golf Course located in sunny Central Oregon. Spacious open floor plan, ideal for large gatherings is filled with natural light, outdoor spa, and an open loft. Custom rock fireplace and built-in bar, ideal for entertaining. Large outdoor deck. Resort amenities include pools, tennis, bike/hike trails, horseback riding, restaurants and a new pool is planned close by (Summer 2017). Located near the Western town of Sisters. **\$789,000.** MLS#201608273



13615 SW MEADOW VIEW

A meadow setting with mountain views in beautiful Camp Sherman. Pine paneled, open beamed, vaulted ceiling in the great room with Hearthstone woodstove and soaring windows. The kitchen has a sunny breakfast nook and a large deck for outdoor entertaining. Upstairs is a large loft and 3 optional bedrooms or family room. Large fenced backyard with storage areas and hot tub. **\$464,900.** MLS#201605797

70600 HOLMES ROAD

Daniel Boone wants to live here. A log home of 1,914 sf on 9.8 acres that borders public land and has a mountain view. Bamboo floors throughout most of the home. Spacious vaulted living room with doors to the front porch. The efficient kitchen opens to the cozy family room that includes a woodstove for added warmth on a chilly morning. 1 BR/1 BA downstairs. 2 BRs and a 2nd bath up. A detached office, pump house that has storage room and a sand volleyball pit. All within the Sisters School District. **\$428,000** MLS#201602241

At Ponderosa Properties... ...It's About the People



Kevin R. Dyer
541-480-7552
CRS, GRI, Principal Broker



Rad Dyer
541-480-8853
ABR, CCIM, CRB, CRS, GRI,
Principal Broker



Carol Davis
541-410-1556
ABR, GRI, Broker



Catherine Black
541-588-9219
CRS, Broker,
Realtor Emeritus - 40 years



Shane Lundgren
541-588-9226
Broker



Debbie Dyer
541-480-1650
GRI, Broker



Carrie Koepke
541-419-1575
Broker



Greg Davidge
808-281-2676
Broker



Desmond Boots
541-977-1125
Broker



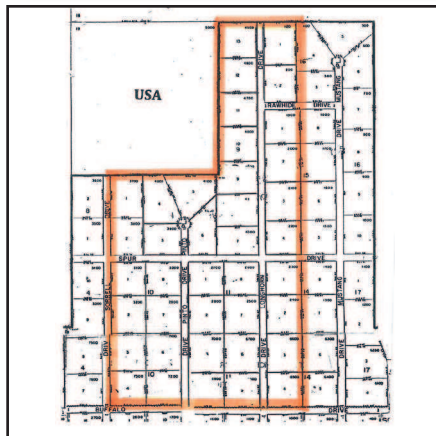
Jackie Herring
541-480-3157
Broker

541-549-2002
1- 800-650-6766

www.PonderosaProperties.com

221 S. Ash St., Sisters

The Locals' Choice!



39 HOMESITES FOR SALE

Approved 39 buildable lots covering 100 acres. Just minutes to Sisters. Each square lot is about 2.5 acres with nice tree coverage. Some have mountain views, some border USFS. Gravel roads and the community water main lines are in. Call the listing office for the bids to provide water, power and pavement to each parcel. A rare opportunity to finish these 5 streets out and either build the homes, or sell the lots individually. Make your own destiny! **\$1,800,000.** MLS#201600855



FILTERED MOUNTAIN VIEWS

7+ acres, septic approved, property corners located, power close-by. Needs well, close-in yet great access to Sisters, Bend and Redmond, in the Sisters School District. Level-to-rolling terrain with mountain views. Owner will consider terms. **\$249,500.** MLS#201607438



VIEWS! PRIVACY! LOCATION! NATURAL BEAUTY! WILDLIFE!

The home on 75± acres was built for the Broken Top to Mt. Jefferson views w/single level living & includes a natural stone fireplace, attached passive solar greenhouse, office/bonus space & lower level apt, both w/separate entrances, all waiting for your personal touch/updates. Gated entry. Easy access to Sisters, Bend & Redmond. The rugged natural beauty is protected by Deschutes Land Trust. 30x50' 1,500 sq. ft. shop/barn with concrete floor & an add'l barn w/ covered storage. **\$799,000.** MLS#201603610



17241 MOUNTAIN VIEW ROAD

Listen to the soothing sound of Whychus Creek flowing below you on this lovely rim lot with dramatic canyon and mountain views, plus the adjoining lot to east is open space providing wonderful buffer of privacy and feeling of more space. Paved roads, easy build with community water and power. Love the serenity! **\$187,500.** MLS#201605723

The Locals' Choice!



SUN RANCH BUSINESS PARK

BE A PART OF IT...

Sisters' Only Custom Mixed-Use Community
INNOVATIVE NEW CONCEPT

- Light Industrial/Commercial
- Live/Work Loft Apartments
- Opportunity for Economic Diversity
- Small Condo-type Spaces
- Perfect for Start-ups and Entrepreneurs

Lot 19	MLS#201400204	\$110,000
Lot 20	MLS#201400203	\$125,000
Lot 17	MLS#201400207	\$145,000
Lot 16	MLS#201400200	\$145,000
Lot 5	MLS#201400182	\$170,000
Lot 4	MLS#201400192	\$175,000
Lot 7	MLS#201400310	\$175,000
Lot 9	MLS#201400185	\$250,000



FANTASTIC CREEK SETTING!

Wonderful neighborhood. Calming sights & sounds of water w/lush greenery & mature ponderosas. Spacious & cozy home has a wonderful kitchen, formal dining & living room, yet a surprisingly casual greatroom presence w/beautiful creek views through the many windows. Plus office & den. Upper level features master suite w/gas fireplace & creek views from every window, 3 add'l bedrooms & secret bonus room. Privacy garden w/cascading fountain, creekside sitting patios & fire pit. **\$698,000.** MLS#201605350



14795 BLUEGRASS LOOP

"Fixer-Upper" On over an acre, borders U.S. Forest Service with mature pine trees, surrounded by newer homes. Outbuildings, well & septic tank have been replaced, underground power. Keep or upgrade existing manufactured home or replace. Owner will consider terms. **\$195,000.** MLS#201605929

17725 MOUNTAIN VIEW DRIVE

See Whychus Creek, the canyon and dramatic rimrock from this 2.55-acre property. The homesite is nicely treed with junipers and pines. In a neighborhood of nice homes with paved access and a community water system. Your home and shop would be allowed. **\$169,500.** MLS#201605019