

Serving the Sisters, Camp Sherman and Black Butte Ranch Areas



# Ponderosa Properties LLC

The Locals' Choice!

REALTORS AND PROPERTY MANAGEMENT

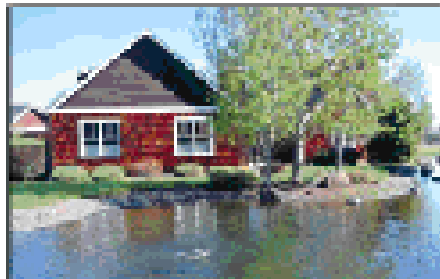
541-549-2002

1-800-650-6736

www.PonderosaProperties.com

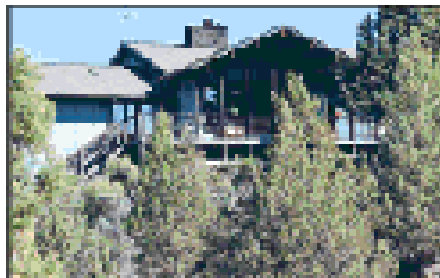
221 S. Ash St., Sisters

## New Listings



3-12 S. JEFFERSON

Shave single, single-story cottage available in Pine Meadow Two bedrooms, 2 baths, open greatroom, wood floors, fireplace, granite counters, outside deck and views of this little community's waterway and pond. Perfect for downsizing or part-time living. Single-car garage. Enjoy the easy walk in the development over paved sidewalks along the waterway while taking in the incredible mountain views! \$285,000. MLS#201603512



VIEWS | PRIVACY | LOCATION | NATURAL BEAUTY | WOOD BLUFF!

The home was built for the Broken Top to Mt. Jefferson area, a very high level living. It includes a natural stone fireplace, attached garage, solar green house, office/business space & a two-level apt. both with separate entrances, all waiting for your personal touch/updates. Great entry. Easy access to Sisters, Bend & Redmond. The rugged natural beauty is exceeded by Deschutes and trust 360°V views from with concrete floor & an airtight four season storage. \$429,000. MLS#201602679



BEAUTIFUL VIEW LOT...

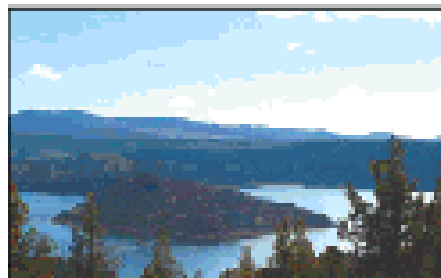
...in magical Camp Sherman. The meadow setting is perfect to build your retirement home or vacation getaway cabin. Huge view of Black Butte, southern exposure for great natural light and common area to the rear. Paved street, underground utilities, community water system and septic approved for standard system. Close to National Forest and the Metolius River. Common-area privileges include pool and tennis courts, hiking trails and much more! Year-round recreation opportunities. \$119,800. MLS#201602430

Honesty and Integrity,  
Ponderosa Properties, LLC  
The Locals' Choice!



GOLF HOME 243

Located on the 14th fairway of the Big Meadow Golf Course. Open greatroom floor plan with fireplace, hardwood floors, large master suite, oil and single garage. Four bedrooms, 2 bathrooms, 2,242 sq. ft. Large rear deck overlooks the golf course. Home is in a vacation rental program and can be rented when the owners are not using it. \$549,500. MLS#201503514



VIEWS OF THE WATER....

...and stunning rock formations from over rock and away at this escape. A gently hilly site sitting above Pineville Reservoir. Only 1/4 mile to the public boat ramp and just minutes to the resort, the zoning allows for 6 cars, 6 horses. Currently has a camp cabin and trailer. Terrain varies, mostly unimproved lots. \$249,000. ML#201316754



FOUR PRIME LOTS IN PINE MEADOW VILLAGE

Pine Pine Meadow Village lots in a choice. Three of the 4 have been built and plans are available for the remaining lots. Lots can be purchased as a group or individually. Close to town and THE BEST DEAL IN PINE MEADOW VILLAGE! \$109,000/402,000. MLS#s: 201602291, 201602659, 201602641, 201602630



68679 CENTRAL STREET

Over 2 acres contained in Sisters, Bend or Redmond. CC's allow your horses and cattle. One in manufactured home or retiree with new home and your and value includes power, water 1998 septic, pumped 2015. Level site, easy to build your new home, and its located in the desirable Sisters School District. Affordable lot, call for details today! \$179,000. MLS#201516760



7000 HOLE MEA ROAD

Daniel Boone wants to live here. A top home of 1914 of an RR worker that includes public land and has a mountain view. Bamboo floors throughout most of the house. Spacious vaulted living room with access to the front porch. The efficient kitchen opens to the easy entry area that includes woodstove for added warmth, a dining room, 1 BR/1 BA was also 2 BRs and a 2nd bath up. A detached office, pump house has been also permitted and a sand volleyball pit. All within the Sisters School District. \$449,000. ML#201602941



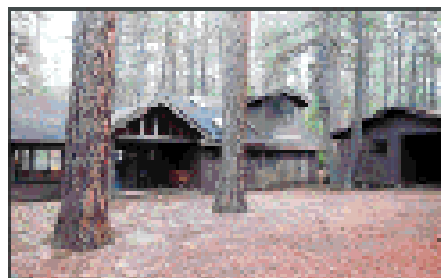
METOLUIS RIVER RETREAT

Well maintained 2 bed/1 bath, 1,506 sq. ft. sits on the banks of the wild and scenic Metolius River. Located in the heart of Camp Sherman and adjacent to National Forest and trails. The living room features a beautiful rock fireplace, hardwood floors and scenic wood paneling. There is a modern kitchen and large updated bathroom. Main-level master suite and large upstairs bedroom that sleeps two. The cabin is insulated and set up for year-round use, has updated electrical, water and septic systems. There is a new roof, plumbing and much more. There is a detached storage studio, wood shed and pump house. Walk out your door to hike, bike, fish and enjoy country life. Owner will carry you back. \$479,500. ML#201502177



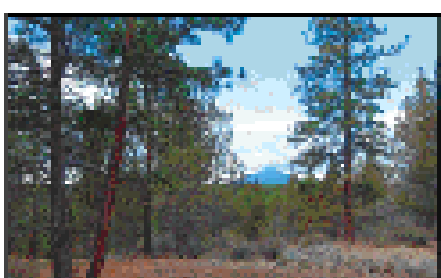
88 HOMESITES FOR SALE

Approved 88 buildable lots covering 100 acres. Just minutes to Sisters. Each square lot is about 2.5 acres with nice tree coverage. Some have mountain views, some border DHS. 8 build units with the community water main lines are in. Call the listing office for the best lot to build with, power and pavement in each parcel. A rare opportunity to build these 8 streets and water lines for the homes, or sell the lots individually. Make your own decision. \$1,800,000. ML#201601922



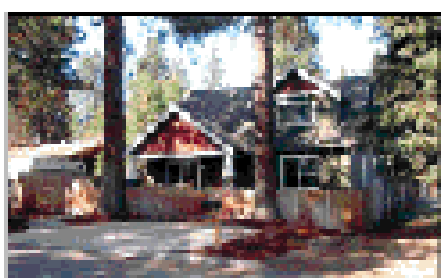
18268 TRACT CLAME

Beautifully renovated 2+ bedroom, 2 bath, 1,573 sq. ft., cabin on the Metolius River in Camp Sherman. The warmth and character of a classic river retreat w/many updates for comfort and enjoyment. Modern kitchen white accents, top of the green oak, built in oak fireplace, open beams, vaulted cedar paneled and lots of windows. Comfortable master suite and great bedroom down, plus large multi-purpose loft looking out to the river. Detailed carpet w/ bonus room. Large covered entry and spacious new patio. Located on a beautiful stretch of the river. \$399,000. MLS#201602462



FOREST LAND

135-acre forest parcel located 10 miles NE of Sisters. Borders Deschutes National Forest. Property is well stocked with mature ponderosa pine through the valley and up the slopes of Sisters Canyon. The mix of juniper, pine trees on the upper plateau provides beautiful character and views over the adjacent forest land. Wildlife sounds throughout this remote, yet easily accessible property. Parcel is three separate tax lots, all deemed unbuildable by Deschutes County. \$199,000. MLS#201602371



7406 NW KINGSTON AVE

Beautiful Craftsman located in Bend, just a few minutes to downtown and the road that runs to Mt. Redlake. Built in 2000, this unique home features comfortable many rooms. From the open entry with beautiful wood ceilings, to the master bedroom and bath. About two floors on the main level. In addition, a completely remodeled 1,100 sq. ft. not included in sq. footage) in-law suite with 1 1/2 bath and 2 rooms is located on the second and landscaped properly. \$629,000. ML#201601941

NEAR THE DISCHUTES RIVER

Climb the slight ridge and the mountain views open big and wide from Mt. Hood to Broken Top. Every peak is visible as well as the valley below. Bordering DUM directly on the eastside. Paved access, underground all lines, existing well and septic available. Enjoy the quiet setting and night sky in this beautiful, secluded domain! Deschutes County. \$695,000. MLS#201506331

Kevin R. Dyer  
541-480-7555  
CRS, OR,  
Principal Broker

Red Dyer  
541-480-8853  
REALTOR, CRP,  
CRS, BR,  
Principal Broker

Carol Davis  
541-410-1556  
ARE, CR, BR, CRP

Debra Sue Black  
541-588-8219  
CRS, BR, CRP,  
Realtor/Owner

Alli Mayas  
541-480-9058  
Broker, CR, Green

Shane Lundgren  
541-583-9226  
Broker

Debbie Dyer  
541-480-1030  
CR, BR, CRP

Carrie Kuebler  
541-419-1575  
Broker

Darwood Everts  
541-977-025  
Broker

Greg Danzig  
508-261-2876  
Broker