

Serving the Sisters, Camp Sherman and Black Butte Ranch Areas



Ponderosa Properties LLC

The Locals' Choice!

REALTORS AND PROPERTY MANAGEMENT

541-549-2002

1-800-650-6766

www.PonderosaProperties.com

221 S. Ash St., Sisters



453 S. PINE MEADOW

West-facing perimeter lot with mountain view and tall ponderosa pines. Included are full architectural plans for two-story house. Side load with alleyway to north. Seller is licensed Real Estate Broker in the State of Oregon. **\$199,000.** MLS#201603144



PREMIUM LAKEFRONT...

...homesite in Aspen Lakes Golf Estates. 1.27 acres with nice pine trees and water views. Protective CC&R's in this gated community of fine homes. 2 years of golf membership included with the purchase. Utilities to the lot line. Just minutes to the town of Sisters. **\$479,000.** MLS 201506535



NICE CORNER LOT!

Dreaming of building your very own custom home in Sisters? Pine Meadow Village offers abundant mountain views, walking paths, meandering waterways, outdoor pool/hot tub, tennis courts and clubhouse for enjoyment while being just steps away from the quaint western town. Choose your own builder and plan for your future, cherished home in your own time. Corner lot, no minimum size restriction & 2-story capability offer choices! **\$125,000.** MLS#201503162



487 E JEFFERSON

Comfortable and well-maintained manufactured home on a beautifully treed, yet sunny setting close to downtown. Enjoy the benefits of the paved driveway/parking and attached double garage. Covered porch leads to the home with vaulted ceilings and sunny south-facing windows. Spacious master suite and 2 guest rooms on opposite ends of the home. Sunny rear patio overlooks fenced yard. Close to Whychus Creek at Creekside Park, and access to National Forest with the Peterson Ridge Trails to enjoy. **\$249,000.** MLS#201602157



BEAUTIFUL REMOTE ACREAGE

Secluded, rolling ponderosa forest tree farm north of Sisters. This 157± acre parcel borders U.S. National Forest land. Property is off the grid with easy access most of the year. Enjoy open skies and abundant wildlife. Metolius Winter Deer Range. **\$399,000.** MLS#201507130



70600 HOLMES ROAD

Daniel Boone wants to live here. A log home of 1,914 sf on 9.8 acres that borders public land and has a mountain view. Bamboo floors throughout most of the home. Spacious vaulted living room with doors to the front porch. The efficient kitchen opens to the cozy family room that includes a woodstove for added warmth on a chilly morning. 1 BR/1 BA downstairs. 2 BRs and a 2nd bath up. A detached office, pump house that has storage room and a sand volleyball pit. All within the Sisters School District. **\$449,000** MLS#201602241



5811 NW 66TH

Land of plenty for your new home. Over 4 acres in the Tetherow Crossing neighborhood to build that new home. Sandy, grassy areas mix in-between interesting rock formations. The Seller's custom-drawn, engineered home plans may be included in this purchase. House was to be located on the outcropping for the best mountain view! Horses and shops allowed. Add in privacy, and a paved road...a dream waiting for you. **\$157,000.** MLS#201602461



1406 NW KINGSTON AVE

Beautiful Craftsman located in Bend's desirable west side. Close to downtown and the road that leads to Mt. Bachelor. Built in 2000, this unique home features comfort in so many forms. From the open entryway with beautiful vaulted ceilings, to the master bedroom and bath w/soak tub located on the main level. In addition, a completely remodeled 900 sq. ft. (not included in sq footage) in-law suite with ½ bath and 2 rooms is located on the fenced-in and landscaped property. **\$649,000.** MLS#201601941



NEAR THE DESCHUTES RIVER

Climb the slight ridge and the mountain views open big and wide from Mt. Hood to Broken Top. Every peak is visible as well as the valley below. Bordering BLM directly on the eastside. Paved access, underground utilities, existing well and septic available. Enjoy the quiet setting and night sky in this beautiful secluded corner of Deschutes County. **\$395,000.** MLS#201506281



1061 E. DESPERADO

Outstanding location in the FivePine commercial development where ponderosa pines still thrive. Current establishments include Three Creeks Brewing Co., an athletic club, Sisters Movie House, restaurant, various medical and business offices, Shibui Spa, and the FivePine Lodge & Cabins. Bring your business to Sisters, where our modern Western community encourages nature-based resources, light industry, small retail, and wellness. **\$167,000.** MLS#201410494



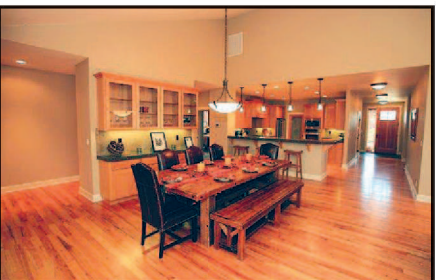
BEAUTIFUL HOME IN CAMP SHERMAN...

...with exciting architecture and interior style. Extensive use of pine and log accents for mountain charm. Spacious kitchen facing multiple living rooms with fireplaces and lots of windows. Wonderful upper master suite with fireplace and patio facing into the forest. 4 additional rooms ideal as a combination of bedrooms, den/office or bonus rooms. Plenty of outdoor living area. Borders National Forest with easy access to the Lake Creek Nature Preserve. A very special 3-bedroom, 3-bath 2,672 sq. ft. home. **\$499,000.** MLS 201503499



SUN RANCH INN

Tourist Commercial zoned. Hotel, cabins, restaurant are all possible. This is an iconic property set amid old-growth trees, ponds and gardens offering Cascade mountain views. This is the ideal base-camp hotel for Central Oregon with access to mountain biking, fishing, golf, skiing, hiking, etc. Situated adjacent to the newly upgraded small airport, and ideal for fly-in guests. Area tourism is growing rapidly and this is a major opportunity. Seller/LLC representative is a licensed Broker in Oregon. **\$1,699,000.** MLS#201603177



IMMACULATE

This single-level Craftsman home in Pine Meadow is of superior quality. At 2,757 sq. ft., the greatroom floor plan boasts oak floors, custom alder cabs, fir doors, fireplace, granite counters & Jenn-Aire stainless appliances in the efficiently designed kitchen. The master is separated from the other 2 large bedrooms and office. Step outside and enjoy the paver patio with a gas firepit and stone-surround gas-fired grill. High-performance foam insulation and dual-stage HP for added comfort and savings. Move-in ready! **\$539,000.** MLS#201603082

BEAUTIFUL HOME/FORRESTED SETTING

Simply beautiful panoramic mountain views are provided from this forested 4.7 acres centrally located between Sisters, Bend & Redmond. Well built and maintained 3-bedroom, 2-bath, 2,642 sq. ft. home with soaring interior spaces. Light and bright rooms with lots of windows. Charming loft plus expansive daylight basement provide ample space for additional bedrooms, den/office, or? Wraparound decks for outdoor enjoyment. Spacious 2-car garage and ample parking for extra vehicles. Good soil covers the level terrain which has simple & easy-maintenance facilities ready for your horses or livestock. Sisters School District. **\$519,000.** MLS#201505476

BEAUTIFUL ACREAGE WITH VIEWS

How about 5 acres with spectacular Cascade mountain views? The snow caps of these beauties will leave you wanting to live here in beautiful Sisters. Just down the street you can hike or ride for miles with access to NFS trails. Land is flush with natural vegetation. Water hook-up is available thru Sun Mtn. Water Co. or drill your own well. Septic feasibility required, electric nearby. Paved road access and only 8 min. to Sisters, 18 min. to Bend. **\$295,000.** MLS#201602570

66979 CENTRAL STREET

Over 2 acres convenient to Sisters, Bend or Redmond. CCRs allow your horses and cattle. Live in manufactured home or replace with new home and your land value includes power, water. 1983 septic, pumped 2015. Level site; easy to build your new home, and it's located in the desirable Sisters School District. Assumable loan, call for details today! **\$179,000** MLS#201511590

Kevin R. Dyer
541-480-755
CRS, GRI
Principal Broker

Rad Dyer
541-480-8853
ABR, CCIM, CRB,
CRS, GRI
Principal Broker

Carol Davis
541-410-1556
ABR, GRI, Broker

Catherine Black
541-588-9219
CRS, Broker,
Realtor Emeritus

Ali Mayea
541-480-9658
Broker, GRI, Green

Shane Lundgren
541-588-9226
Broker

Debbie Dyer
541-480-1650
GRI, Broker

Carrie Koepke
541-419-1575
Broker

Desmond Boots
541-977-1125
Broker

Greg Davidge
808-281-2676
Broker