

Serving the Sisters, Camp Sherman and Black Butte Ranch Areas

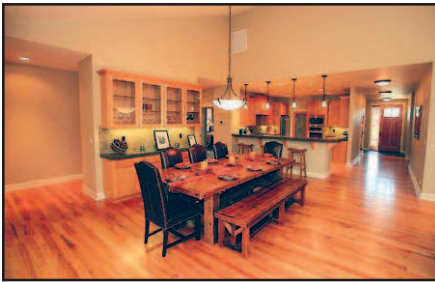


Ponderosa Properties LLC

The Locals' Choice!

REALTORS AND PROPERTY MANAGEMENT

New Listings



IMMACULATE

This single-level Craftsman home in Pine Meadow is of superior quality. At 2,757 sq. ft., the greatroom floor plan boasts oak floors, custom alder cabs, fir doors, fireplace, granite counters & Jenn-Aire stainless appliances in the efficiently designed kitchen. The master is separated from the other 2 large bedrooms and office. Step outside and enjoy the paver patio with a gas firepit and stone-surround gas-fired grill. High-performance foam insulation and dual-stage HP for added comfort and savings. Move-in ready! **\$539,000.** MLS#201603082



WELL-BUILT RIVER CABIN

Metolius riverfront cabin set amid towering ponderosa pines and the solitude of the upper reaches of the scenic river. 2+ bedrooms, 2 baths and 1,288 sq. ft. Constructed in 1983, this quaint yet modern cabin features knotty pine interior w/vaulted ceilings, open floor plan w/ ample natural lighting from the many windows. Master bedroom w/private bathroom. Laundry closet. Spacious & sunny deck for enjoying the great outdoors. Detached double garage w/studio ideal for additional sleeping/bonus space. US Forest Service Special Use Permit for Lot. **\$445,000.** MLS#201602936



FABULOUS LOCATION...

...in Cascade Meadow Ranch with common area on 3 sides, overlooking the lake and meadow with a beautiful Black Butte view. This 3,237± sq. ft. home has an open greatroom floor plan with 4 bedrooms, 3 bathrooms, hardwood floors, custom cabinets, family room with gas stove and a large master suite with office and walk-in closet. Cascade Meadow Ranch offers open space, horse facilities, clubhouse and trails and is completely surrounded by U.S. National Forest only 2 miles from Sisters. For more information on Cascade Meadow Ranch visit www.cascademeadowranch.com. **\$635,000** MLS#201406208

YOU BELONG HERE

2.5-acre parcels with community water, power and phone available. All lots offer you treed privacy and easy paved-road access. Be one of the first buyers in to claim a mountain view. Just minutes to Sisters. Priced **\$142,500 to \$225,000.** Call listing office for MLS#.

At Ponderosa Properties... ...It's About the People



Kevin R. Dyer
541-480-7552
CRS. GRI. Principal Broker



Rad Dyer
541-480-8853
ABR. CCIM. CRB. CRS. GRI.
Principal Broker



Carol Davis
541-410-1556
ABR. GRI. Broker



Catherine Black
541-588-9219
CRS. Broker.
Realtor Emeritus



Debbie Dyer
541-480-1650
GRI. Broker



Ali Mayea
541-480-9658
Broker. GRI. Green



Shane Lundgren
541-588-9226
Broker



Carrie Koepke
541-419-1575
Broker



Greg Davidge
808-281-2676
Broker



Desmond Boots
541-977-1125
Broker

541-549-2002
1-800-650-6766
www.PonderosaProperties.com
221 S. Ash St., Sisters
The Locals' Choice!



1406 NW KINGSTON AVE

Beautiful Craftsman located in Bend's desirable west side. Close to downtown and the road that leads to Mt. Bachelor. Built in 2000, this unique home features comfort in so many forms. From the open entryway with beautiful vaulted ceilings, to the master bedroom and bath w/soak tub located on the main level. In addition, a completely remodeled 900 sq. ft. (not included in sq footage) in-law suite with ½ bath and 2 rooms is located on the fenced-in and landscaped property. **\$649,000.** MLS#201601941



BEAUTIFUL ACREAGE WITH VIEWS

How about 5 acres with spectacular Cascade mountain views? The snow caps of these beauties will leave you wanting to live here in beautiful Sisters. Just down the street you can hike or ride for miles with access to NFS trails. Land is flush with natural vegetation. Water hook-up is available thru Sun Mtn. Water Co. or drill your own well. Septic feasibility required, electric nearby. Paved road access and only 8 min. to Sisters, 18 min. to Bend. **\$295,000.** MLS#201602570



BEAUTIFUL LOT IN CAMP SHERMAN...

...with a huge view of Black Butte, overlooking open space/meadow with southern exposure. Underground electric, telephone and water available, with paved street. Ownership includes common-area creek basin, seasonal swimming pool, tennis courts, trails and much more. Close to National Forest, the Metolius River, Hoodoo Ski Bowl and Black Butte Ranch golf. Year-round recreation available out your door. **\$149,500.** MLS#201507794



1061 E. DESPERADO

Outstanding location in the FivePine commercial development where ponderosa pines still thrive. Current establishments include Three Creeks Brewing Co., an athletic club, Sisters Movie House, restaurant, various medical and business offices, Shibui Spa, and the FivePine Lodge & Cabins. Bring your business to Sisters, where our modern Western community encourages nature-based resources, light industry, small retail, and wellness. **\$167,000.** MLS#201410494



453 S. PINE MEADOW

West-facing perimeter lot with mountain view and tall ponderosa pines. Included are full architectural plans for two-story house. Side load with alleyway to north. Seller is licensed Real Estate Broker in the State of Oregon. **\$199,000.** MLS#201603144



66979 CENTRAL STREET

Over 2 acres convenient to Sisters, Bend or Redmond. CCRs allow your horses and cattle. Live in manufactured home or replace with new home and your land value includes power, water. 1983 septic, pumped 2015. Level site; easy to build your new home, and it's located in the desirable Sisters School District. Assumable loan, call for details today! **\$179,000** MLS#201511590



ROOM FOR THE WHOLE FAMILY... GRANDMA TOO!

Over 4,200 square feet of updated and upgraded home on 1+ acre in the pines. A total of 5 bedrooms (3 masters with private baths) and 4.5 bathrooms. Separate living spaces up and down, or use this flexible floor plan to suit your own needs. Custom cabinetry, vaulted ceilings and a wash of natural light set the tone on the main floor. A huge deck, landscaping, 2-stall horse shed and a greenhouse add to this super value. **LEASE OPTION AVAILABLE. \$519,000.** MLS#201602021



70600 HOLMES ROAD

Daniel Boone wants to live here. A log home of 1,914 sf on 9.8 acres that borders public land and has a mountain view. Bamboo floors throughout most of the home. Spacious vaulted living room with doors to the front porch. The efficient kitchen opens to the cozy family room that includes a woodstove for added warmth on a chilly morning. 1 BR/1 BA downstairs. 2 BRs and a 2nd bath up. A detached office, pump house that has storage room and a sand volleyball pit. All within the Sisters School District. **\$449,000** MLS#201602241