

Serving the Sisters, Camp Sherman and Black Butte Ranch Areas



Ponderosa Properties LLC

The Locals' Choice!

REALTORS AND PROPERTY MANAGEMENT

541-549-2002

1-800-650-6766

www.PonderosaProperties.com

221 S. Ash St., Sisters



BEAUTIFUL HOME/FORESTED SETTING

Simply beautiful panoramic mountain views are provided from this forested 4.7 acres centrally located between Sisters, Bend & Redmond. Well built and maintained 3-bedroom, 2-bath, 2,642 sq. ft. home with soaring interior spaces. Light and bright rooms with lots of windows. Charming loft plus expansive daylight basement provide ample space for additional bedrooms, den/office, or? Wraparound decks for outdoor enjoyment. Spacious 2-car garage and ample parking for extra vehicles. Good soil covers the level terrain which has simple & easy-maintenance facilities ready for your horses or livestock. Sisters School District. **\$519,000.** MLS#201505476



1061 E. DESPERADO

Outstanding location in the FivePine commercial development where ponderosa pines still thrive. Current establishments include Three Creeks Brewing Co., an athletic club, Sisters Movie House, restaurant, various medical and business offices, Shibui Spa, and the FivePine Lodge & Cabins. Bring your business to Sisters, where our modern Western community encourages nature-based resources, light industry, small retail, and wellness. **\$167,000.** MLS#201410494



FOUR PRIME LOTS IN PINE MEADOW VILLAGE

Prime Pine Meadow Village lots in a cluster. Three of the 7 have been built and plans are available for the remaining lots. Lots can be purchased as a group or individually. Close to town and THE BEST DEAL IN PINE MEADOW VILLAGE! **\$100,000/each.** MLS#s: 20140531/201405338/201405341/201405351



SEE THE MOUNTAINS...

...from this 4.7-acre parcel in the Sisters area. Tuck into the trees and have a nice view of the North Sister and Middle Sister out your window. No homeowners dues. Centrally located to Sisters, Bend or Redmond. **\$154,000.** MLS#201401855



BEAUTIFUL TREED LOT IN METOLIUS MEADOWS

This .40± acre lot with mature ponderosa pines borders open space/common area overlooking Lake Creek to the north and Black Butte to the south. Paved road and underground utilities. Ownership includes common-area privileges, tennis courts, pool and more. Close to National Forest and Metolius River. This is a great lot to build your vacation getaway cabin. **\$209,500.** MLS#201108987



532 S. PINE MEADOW

Single-level, custom Craftsman-built home in Pine Meadow with lovely views of Black Crater. Three-bedroom, 2-bath, 1,920 sq. ft. home has numerous built-ins throughout. Propane fireplace, heat pump with forced air, private courtyard, Trex decking, French doors to wraparound covered porch, mature landscaping with drip irrigation. Kitchen island with new butcher-block countertop, slide-out cabinets, built-in desk, bar sink. Walk-in closets w/ organizers, utility room w/laundry sink, covered breezeway to 2-car garage; new custom doors. Great light! **\$429,000.** MLS#201600056



BEAUTIFUL REMOTE ACREAGE

Secluded, rolling ponderosa forest tree farm north of Sisters. This 157± acre parcel borders U.S. National Forest land. Property is off the grid with easy access most of the year. Enjoy open skies and abundant wildlife. Metolius Winter Deer Range. **\$399,000.** MLS#201507130



453 S. PINE MEADOW

West-facing perimeter lot with mountain view and tall ponderosa pines. Included are full architectural plans for two-story house. Side load with alleyway to north. Seller is licensed Real Estate Broker in the State of Oregon. **\$189,500.** MLS#201504504



NEAR THE DESCHUTES RIVER

Climb the slight ridge and the mountain views open big and wide from Mt. Hood to Broken Top. Every peak is visible as well as the valley below. Bordering BLM directly on the eastside. Paved access, underground utilities, existing well and septic available. Enjoy the quiet setting and night sky in this beautiful secluded corner of Deschutes County. **\$395,000.** MLS#201506281



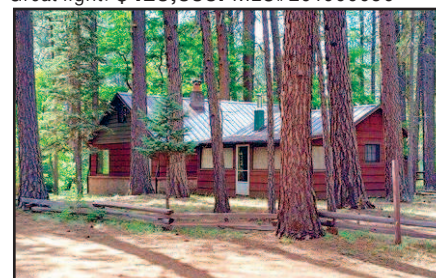
66979 CENTRAL STREET

Over 2 acres convenient to Sisters or commute to Bend. Build new frame home/modular, or remove manufactured home and your land value includes water and power. Septic permit 1983, pumped 2014. CCR's allow horses and cattle. Roof 2007±, Quadra Fire woodstove 2008. Monthly tenant \$850 wants to stay. **\$199,900.** MLS#201511590



SPECTACULAR SETTING

Simply stunning setting on Whychus Creek in Sisters with sunny exposure & lush greenery. Exciting exterior design invites entry to this newer, 3-BR, 2-BA, 1,701 sq. ft., well-cared-for single-level home with extensive creek views from most rooms. Greatroom design with vaulted ceilings and natural light. Gas fireplace, solid countertops, upscale fixtures. Wonderful master suite. Covered creekside patio. Ideally located in a tranquil neighborhood just blocks from downtown & Sisters Coffee, yet even closer to National Forest trails. **\$489,000.** MLS#201503600



METOLIUS RIVER RETREAT

Well-maintained 2-bed/1-bath, 1,296 sq. ft. cabin on the banks of the wild and scenic Metolius River. Located in the heart of Camp Sherman and adjacent to National Forest and trails. The living room features a beautiful rock fireplace, hardwood floors and warm wood paneling. There is a modern kitchen and large updated bathroom. Main-level master suite and large upstairs bedroom that sleeps five. The cabin is insulated and set up for year-round use, has updated electrical, water and septic systems. There is a new roof, plumbing and much more. There is a detached storage/studio, wood shed and pump house. Walk out your door to hike, bike, fish and x-country ski. Owner will carry contract. **\$479,500.** MLS#201507177



VIEW-O-LICIOUS!!

Build that new home with a mountain view out your window. 2.5 acres of pines and privacy. A paved road, community water and buried power lines in this neighborhood of fine homes. **\$225,000.** MLS#2910017

HIGH DESERT LIVING AT ITS FINEST
This 1/2-acre homesite is a chance to build in one of Central Oregon's finest communities. With a focus on wellness and "walking softly on the earth," Brasada Ranch offers a tip-top athletic club, Jacobsen/Hardy golf course and extensive equestrian center. Just 15 minutes to Bend. **\$94,000.** MLS#201408571

Ponderosa Properties LLC
The Locals' Choice!



Kevin R. Dyer
541-480-7552
CRS, GRI, Principal Broker



Rad Dyer
541-480-8853
ABR, CCIM, CRB, CRS, GRI, Principal Broker



Carol Davis
541-410-1556
ABR, GRI, Broker



Catherine Black
541-588-9219
CRS, Broker, Realtor Emeritus



Ali Mayea
541-480-9658
Broker, GRI, Green



Shane Lundgren
541-588-9226
Broker



Debbie Dyer
541-480-1650
GRI, Broker



Carrie Koepke
541-419-1575
Broker