

Serving the Sisters, Camp Sherman and Black Butte Ranch Areas



Ponderosa Properties LLC

The Locals' Choice!

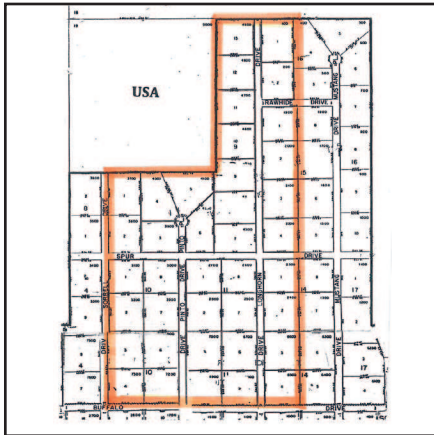
REALTORS AND PROPERTY MANAGEMENT

541-549-2002

1-800-650-6766

www.PonderosaProperties.com

221 S. Ash St., Sisters



39 HOMESITES FOR SALE

Approved 39 buildable lots covering 100 acres. Just minutes to Sisters. Each square lot is about 2.5 acres with nice tree coverage. Some have mountain views, some border USFS. Gravel roads and the community water main lines are in. Call the listing office for the bids to provide water, power and pavement to each parcel. A rare opportunity to finish these 5 streets out and either build the homes, or sell the lots individually. Make your own destiny! **\$1,800,000.** MLS#201600855



BEAUTIFUL HOME/FORESTED SETTING

Simply beautiful panoramic mountain views are provided from this forested 4.7 acres centrally located between Sisters, Bend & Redmond. Well built and maintained 3-bedroom, 2-bath, 2,642 sq. ft. home with soaring interior spaces. Light and bright rooms with lots of windows. Charming loft plus expansive daylight basement provide ample space for additional bedrooms, den/office, or? Wraparound decks for outdoor enjoyment. Spacious 2-car garage and ample parking for extra vehicles. Good soil covers the level terrain which has simple & easy-maintenance facilities ready for your horses or livestock. Sisters School District. **\$519,000.** MLS#201505476



PREMIUM LAKEFRONT...

...homesite in Aspen Lakes Golf Estates. 1.27 acres with nice pine trees and water views. Protective CC&R's in this gated community of fine homes. 2 years of golf membership included with the purchase. Utilities to the lot line. Just minutes to the town of Sisters. **\$479,000.** MLS#201506535



SPECTACULAR SETTING

Simply stunning setting on Whychus Creek in Sisters with sunny exposure & lush greenery. Exciting exterior design invites entry to this newer, 3-BR, 2-BA, 1,701 sq. ft., well-cared-for single-level home with extensive creek views from most rooms. Greatroom design with vaulted ceilings and natural light. Gas fireplace, solid countertops, upscale fixtures. Wonderful master suite. Covered creekside patio. Ideally located in a tranquil neighborhood just blocks from downtown & Sisters Coffee, yet even closer to National Forest trails. **\$489,000.** MLS#201503600



SPACIOUS AND GRACIOUS!

Over 2,700 sf in this custom-built NE Bend home. Hardwood floors & a Telluride stonewalled entry set the tone. Professional grade S/S appliances and granite countertops in this cook's kitchen that seats 8 at the bar and overlooks the main living area. Upstairs is a family/media room with a wet bar and friggie so you can grab your snack before the movie starts. An oversized master suite with 2 walk-in closets and finely appointed bathroom. The 2 additional guest bedrooms share a "Jack-n-Jill" bath. An office, sewing room and laundry round out this 3-bedroom, 2.5-bath home. The 10,000 sf lot includes professional landscaping with waterfalls front and back, paver patio and a good-sized fenced yard. Graveled and paved parking areas for toys and cars. Room to build a shop. **\$499,000.** MLS#201502207



66979 CENTRAL STREET

Over 2 acres convenient to Sisters or commute to Bend. Build new frame home/modular, or remove manufactured home and your land value includes water and power. Septic permit 1983, pumped 2014. CCR's allow horses and cattle. Roof 2007±, Quadra Fire woodstove 2008. Monthly tenant \$850 wants to stay. **\$199,900.** MLS#201511590



BEAUTIFUL TREADED LOT IN METOLIUS MEADOWS

This .40± acre lot with mature ponderosa pines borders open space/common area overlooking Lake Creek to the north and Black Butte to the south. Paved road and underground utilities. Ownership includes common-area privileges, tennis courts, pool and more. Close to National Forest and Metolius River. This is a great lot to build your vacation getaway cabin. **\$209,500.** MLS#201108987



METOLIUS RIVER RETREAT

Well-maintained 2-bed/1-bath, 1,296 sq. ft. cabin on the banks of the wild and scenic Metolius River. Located in the heart of Camp Sherman and adjacent to National Forest and trails. The living room features a beautiful rock fireplace, hardwood floors and warm wood paneling. There is a modern kitchen and large updated bathroom. Main-level master suite and large upstairs bedroom that sleeps five. The cabin is insulated and set up for year-round use, has updated electrical, water and septic systems. There is a new roof, plumbing and much more. There is a detached storage/studio, wood shed and pump house. Walk out your door to hike, bike, fish and x-country ski. Owner will carry contract. **\$479,500.** MLS#201507177



532 S. PINE MEADOW

Single-level, custom Craftsman-built home in Pine Meadow with lovely views of Black Crater. Three-bedroom, 2-bath, 1,920 sq. ft. home has numerous built-ins throughout. Propane fireplace, heat pump with forced air, private courtyard, Trex decking, French doors to wraparound covered porch, mature landscaping with drip irrigation. Kitchen island with new butcher-block countertop, slide-out cabinets, built-in desk, bar sink. Walk-in closets w/ organizers, utility room w/laundry sink, covered breezeway to 2-car garage; new custom doors. Great light! **\$429,000.** MLS#201600056



BEAUTIFUL REMOTE ACREAGE

Secluded, rolling ponderosa forest tree farm north of Sisters. This 157± acre parcel borders U.S. National Forest land. Property is off the grid with easy access most of the year. Enjoy open skies and abundant wildlife. Metolius Winter Deer Range. **\$399,000.** MLS#201507130



FOUR PRIME LOTS IN PINE MEADOW VILLAGE

Prime Pine Meadow Village lots in a cluster. Three of the 7 have been built and plans are available for the remaining lots. Lots can be purchased as a group or individually. Close to town and THE BEST DEAL IN PINE MEADOW VILLAGE! **\$100,000/each.** MLS#s: 201405321/201405338/201405341/201405351



1061 E. DESPERADO

Outstanding location in the FivePine commercial development where ponderosa pines still thrive. Current establishments include Three Creeks Brewing Co., an athletic club, Sisters Movie House, restaurant, various medical and business offices, Shibui Spa, and the FivePine Lodge & Cabins. Bring your business to Sisters, where our modern Western community encourages nature-based resources, light industry, small retail, and wellness. **\$167,000.** MLS#201410494

YOU BELONG HERE

2.5-acre parcels with community water, power and phone available. All lots offer you treed privacy and easy paved-road access. Be one of the first buyers in to claim a mountain view. Just minutes to Sisters. Priced **\$142,500 to \$225,000.** Call listing office for MLS#.

Ponderosa Properties, LLC

The Locals' Choice!



Kevin R. Dyer
541-480-7552
CRS, GRI, Principal Broker



Rad Dyer
541-480-8853
ABR, CCIM, CRB, CRS, GRI,
Principal Broker



Carol Davis
541-410-1556
ABR, GRI, Broker



Catherine Black
541-588-9219
CRS, Broker,
Realtor Emeritus



Ali Mayea
541-480-9658
Broker, GRI, Green



Shane Lundgren
541-588-9226
Broker



Debbie Dyer
541-480-1650
GRI, Broker



Carrie Koepke
541-419-1575
Broker