

Serving the Sisters, Camp Sherman and Black Butte Ranch Areas



Ponderosa Properties LLC

The Locals' Choice!

REALTORS AND PROPERTY MANAGEMENT

541-549-2002

1-800-650-6766

www.PonderosaProperties.com

221 S. Ash St., Sisters

New Listings



13615 SW MEADOW VIEW

A meadow setting with mountain views in beautiful Camp Sherman. Pine-paneled, open-beamed, vaulted ceiling in the greatroom with Hearthstone woodstove and soaring windows. The kitchen has a sunny breakfast nook and a large deck for outdoor entertaining. Upstairs is a large loft and 3 optional bedrooms or family room. Large fenced backyard with storage areas and hot tub. **\$494,500.** MLS#201502864



BEAUTIFUL CAMP SHERMAN CABIN...

Overlooking the Metolius River just below the headwaters. 1,530±-sq. ft with 2 beds, 2 baths, a detached single garage and separate storage building. Open-beam vaulted greatroom with pine paneling, fireplace insert, carpet and tile floors. Two large bedrooms and plenty of storage. Front and rear decks. Beautiful forest and river views. Immediate access to trails, fishing and the great outdoors. US Forest Special Use Permit. **\$389,500.** MLS#201502692



RARE OPPORTUNITY!

One-half shared interest in a rustic Metolius riverfront chalet. Three bedrooms, 1 bath, 1,040± sq. ft. Large garage and outdoor deck areas. Fully furnished. Year-round access to river and forest trails. U.S. Forest Service special-use permit for land. **\$214,000 – 1/2 Share.** MLS#201309624



TRULY A WORK OF ART!

Nestled on top of a magical setting, you will lose your breath as you enter the front door. Deschutes Land Trust's Camp Polk Preserve centers the landscape of an ever-changing meadow, abundant wildlife, Whychus Creek's restoration project, and morning sunrises. Over-sized windows throughout this exquisite home give a familiar yet contemporary sensation. Features include radiant floors and a Spark Modern Fireplace. Outdoor decks allow for year-round entertaining. **\$779,000.** MLS#201502326



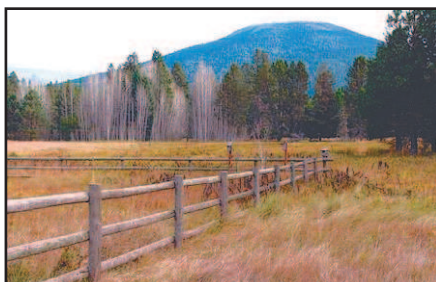
VAULTED CEILINGS THROUGHOUT...

...extremely livable open plan that lives larger than sq. ft. sounds! What a pretty piece of land just north of Sisters with lovely ponderosas. Excellent ingress/egress/turn-around for boat, RV, contractor equipment; 720 garage, 480 woodshop/storage & small building; good shelving, slab floor. Alaska-pack R-30 floor & roof, concrete siding. Immaculately cared-for incl new carpet, interior paint, new dishwasher. Big pantry, breakfast bar, pleasant front porch ideal for small pet/child, 2nd deck, double sinks. **\$265,000.** MLS#201502882



COYOTE SPRINGS

Coyote Springs is a great neighborhood ideally located on the south side of Sisters. Close to the Sisters Athletic Club, Shibui Spa, quality restaurants, Three Creeks Brew Pub, The Sisters Movie House, City Park and across the street there is direct trail access to a vast network of area trails for hiking and mountain biking. Lot purchase includes approved building plans. **\$159,500.** MLS#201502699



BEAUTIFUL MEADOW SETTING

...with Black Butte and Green Ridge views in Camp Sherman bordering US National Forest. Water and utilities to lot, septic system installed. Close to Metolius River. Year-round recreation opportunities available. Hiking, fishing, biking, skiing, golf and much more. **\$249,500.** MLS#201409509



FOREST LAND

156-acre forest parcel located 10 miles NE of Sisters. Borders Deschutes National Forest. Property is well stocked with mature ponderosa pine through the valley and up the slopes of Stevens Canyon. The mix of juniper/pine forest on the upper plateau provides beautiful character and views over the adjacent forest land. Wildlife abounds throughout this remote, yet easily accessible property. Parcel is three separate tax lots, all deemed unbuildable by Deschutes County. **\$199,000.** MLS#201410433



YOU BELONG HERE

2.5-acre parcels with community water, power and phone available. All lots offer you treed privacy and easy paved-road access. Be one of the first buyers in to claim a mountain view. Just minutes to Sisters. Priced \$142,500 to **\$250,000.** Call listing office for MLS#.



HISTORIC OREGON PROPERTY

Iconic property set amid old-growth trees, ponds, and gardens offers Cascade mountain views. Recently annexed into the city of Sisters, approved for 30 resort cabins, restaurant, lodge, and retail. This is the ideal base camp for Central Oregon with access to mountain biking, fishing, golf, skiing, hiking, etc. Situated adjacent to the newly upgraded small airport, and ideal for fly-in guests. This is a unique project that needs someone with imagination and energy! Seller is licensed Broker in Oregon. **\$1,250,000.** MLS#201405862



BEAUTIFUL TREED LOT IN METOLIUS MEADOWS

This .40± acre lot with mature ponderosa pines borders open space/common area overlooking Lake Creek to the north and Black Butte to the south. Paved road and underground utilities. Ownership includes common-area privileges, tennis courts, pool and more. Close to National Forest and Metolius River. This is a great lot to build your vacation getaway cabin. **\$199,000.** MLS#201108987



A MOVE IN THE RIGHT DIRECTION!

This single-level, 3-bedroom, 2-bath Tollgate home is just what you have been looking for. Enjoy the vaulted greatroom with rich wood trim around the windows and doors. This master includes a walk-in closet and good separation from the 2 guest rooms. The hard work has been done: all new floor coverings and interior paint. The windows, exterior paint, roof and appliances about 6 years new, and the furnace was replaced in 2010. Common land on 3 sides for added privacy. Easy access to the pool, tennis and horse shoes! **\$279,000.** MLS#201407789

EXCITING MOUNTAIN VIEWS
Sisters' best condominium cluster. Exciting mountain views are available from the kitchen, dining area, greatroom & outside on the patio overlooking manicured lawns & pristine pasture lands. Massive ponderosa pines frame the pastures, foothills and Cascade peaks in nature's own award-winning style. Enjoy this well-cared-for 2-bedroom, 2-bath, 1,150 sq. ft. ground-level condo with detached garage. Pine Meadow Village offers spacious commons, water features, clubhouse with pool, spa & proximity to downtown. **\$229,000.** MLS#201500534

VIEWS OF THE WATER....

...and stunning rock formations from every nook and cranny of this acreage. A pretty hillside setting above Prineville Reservoir. Only ¼ mile to the public boat ramp and just minutes to the resort. The zoning allows for 5-acre homesites. Currently has a cozy camp and trailer. Terrain varies, mostly juniper trees. **\$369,000.** MLS#201310534



1061 E. DESPERADO

Outstanding location in the FivePine commercial development where ponderosa pines still thrive. Current establishments include Three Creeks Brewing Co., an athletic club, Sisters Movie House, restaurant, various medical and business offices, Shibui Spa, and the FivePine Lodge & Cabins. Bring your business to Sisters, where our modern Western community encourages nature-based resources, light industry, small retail, and wellness. **\$175,000.** MLS#201410494

70054 APPALOOSA DRIVE

Come take a look. Partial mountain views from a nice gently sloping building site located in Squaw Creek Canyon Recreational Estates. Great solar exposure from a natural openness with morning-to-evening sunlight. A grove of pines provides character and shade. Enjoy a spacious feel from surrounding homes on this corner lot in an established neighborhood with paved streets, underground utilities and community water system. **\$99,000.** MLS#201407747



Kevin R. Dyer
541-480-7552
CRS, GRI, Principal Broker

Rad Dyer
541-480-8853
ABR, CCIM, CRB, CRS, GRI,
Principal Broker

Carol Davis
541-410-1556
ABR, GRI, Broker

Catherine Black
541-588-9219
CRS, Broker

Ali Mayea
541-480-9658
Broker, GRI, Green

Shane Lundgren
541-588-9226
Broker

Debbie Dyer
541-480-1650
GRI, Broker